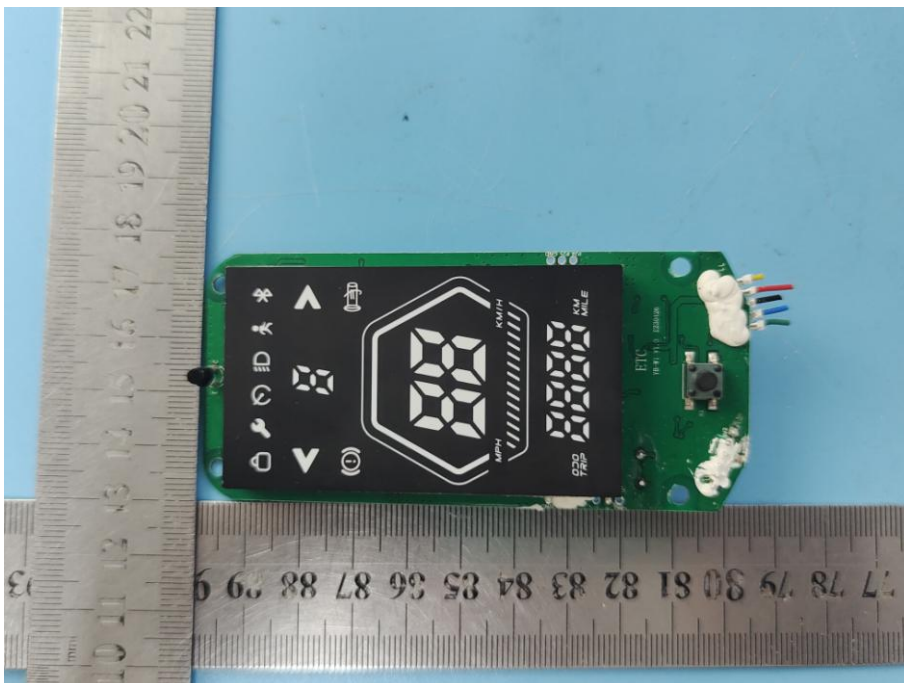


Model No.: W1

INTERNAL PHOTO OF SAMPLE

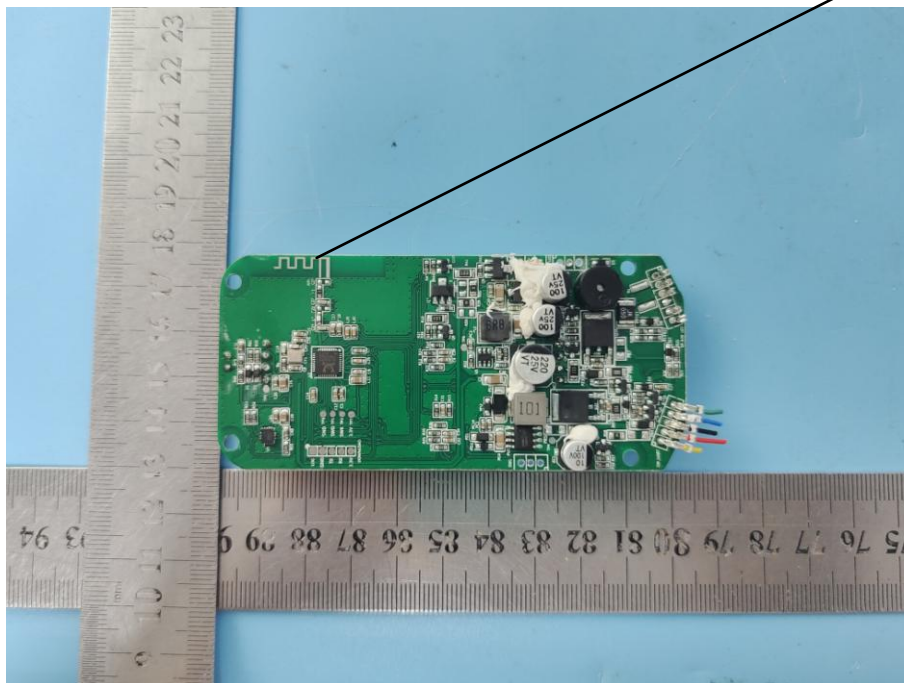


INTERNAL PHOTO OF SAMPLE PCB



BT Antenna

INTERNAL PHOTO OF SAMPLE PCB



7、Label Drawing 贴纸图纸

<p>45.00 mm</p>	<p>45.00 mm</p>	<p>CCPSC Lithium-ion Battery Pack</p> <p>Model : W1-18650-10S5P</p> <p>Capacity : 36V DC 10Ah</p> <p>Power : 360Wh</p> <p>Charging limit Voltage : 42V</p> <p>Made in China</p> <p>WARNING UN38.3 MSDS</p> <ul style="list-style-type: none"> Do not connect the positive and negative terminals of the battery. Do not expose the battery to high temperature, such as heating or in strong sunlight Do not submerge the battery in any kind of liquid and avoid drenching with rain. Do not disassemble the battery without professional guidance. Use only the specified charger. To reduce the risk of injury, user must read instruction manual. 	<p>70*15mm</p> <p>W1 3610 2305190001</p> <p>材质：50#消银龙覆哑膜</p>
			<p>40*14MM</p> <p>Warning</p> <p>The label turns red in water</p> <p>The product is not guaranteed for water</p>