

## 1. Antenna Description:

Antenna type	PIFA antenna
Model	M2129B1
Frequency range	2400-2500MHz
Manufacturer	HAO MING ELECTRONICS CO, LIMITED
ANT Peak Gain	0.92 dBi

## 2. Antenna Photo:

Length: 23.06mm  
Width: 1.76mm



### 3. Test Equipment & Conditions

#### 3.1 Test instrument

VSWR is tested using Agilent E5071B connected to a hand mechanism, and the status is free space.

#### 3.2 Test environment and methods

Dark room specifications: ETS-743

TD-SCDMA test equipment: StarPoint SP6010/Agilent 8960

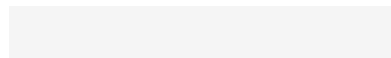
LTE-TDD/FDD-SCDMA test equipment: StarPoint SP8011/CMW500

WCDMA/GSM/CDMA test equipment: Agilent 8960

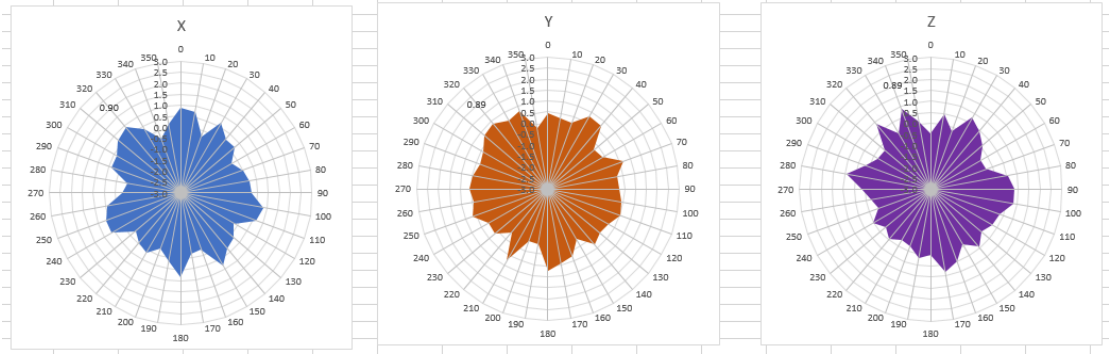
Passive efficiency testing equipment: Agilent Technologies E5071B



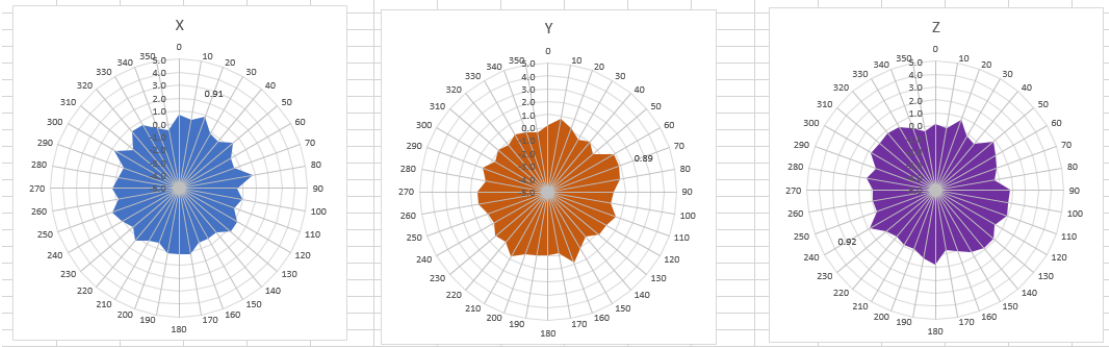
### 4 . Antenna Radiation Pattern



2400MHz



2450MHz



2500MHz

