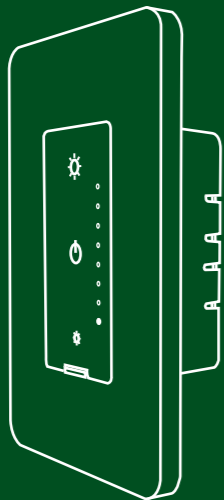




# WI-FI SMART DIMMER EASY START GUIDE



### WARNING:

Incorrect installation or attachment of this product can pose a risk of shock or fire. Ensure proper installation following the owner's manual, current electrical codes, and the National Electric Code (NEC).

### DANGER OF ELECTRIC SHOCK:

Disable the main power at the circuit breaker before proceeding with installation.

**CAUTION:** Designed for controlling incandescent or LED lights exclusively.

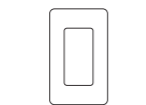
### CAUTION: FIRE HAZARD:

- Do not pair with control receptacle outlets, fluorescent light fixtures, motor-operated devices, or appliances supplied by transformers.
- Do not surpass electrical ratings.
- Use exclusively with copper wires for this device.
- Intended for indoor use only.
- Install within a metallic outlet box with a minimum width of 50mm or a non-metallic box.

Use exclusively with solid copper wire or copper-clad wire.



### PARTS INCLUDED



Decorative Wall Plate (1)



Dimmers (1)



PRE-INSTALLED Mounting Screws (2)

### TROUBLESHOOTING TIPS

#### Dimmer Wi-Fi Connection Issues:

Use a 2.4 GHz Wi-Fi network; 5 GHz networks aren't compatible. Test Wi-Fi with other devices like your phone to ensure it's working. If coverage is weak, move the Smart Dimmer closer to the router. Enter your Wi-Fi password accurately; it's case-sensitive.

#### Flickering Lights:

Check for loose lamp connections. Ensure secure wire connections. Adjust dimming range to troubleshoot flickering.

#### No Light Activation:

Verify if the circuit breaker or fuse has tripped. Check if the bulb or lamp is burnt out.

#### No Power Indicator Light:

Ensure the neutral (white wire) is connected to the dimmer. Confirm the dimmer is supplied with 120 V AC, 60 Hz only.

#### Unstable Dimmer Functionality:

Check that the controlled Load doesn't exceed 450W incandescent or 150W LED.

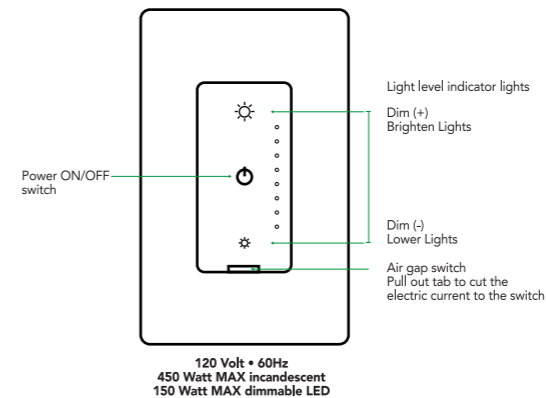
### REPLACING LIGHT BULBS

Ensure dimmer switches are OFF (no indicator lights lit). For bulb replacement, cut power at circuit breaker or fuse to the socket. Use the air gap switch to deactivate the dimmer in single pole setups (only one dimmer, no other switch). This doesn't replace circuit breaker/fuse power-off.

### INSTALLATION REQUIRES A NEUTRAL WIRE

#### DIMMER DOES NOT WORK WITH SMART BULBS

These dimmers are designed to dim incandescent and LED bulbs smoothly. Dimming range will vary depending on the bulb type.



### FUNCTION OF BUTTONS:

Press ON / OFF Quickly - Turn on / off lights.  
Press DIM+ / DIM- Quickly - Increase / decrease brightness  
Press and hold the ON / OFF button about 3 seconds (the indicator light will be flickering)

*NOTE: Turn off the lights first, then press and hold the ON / OFF button, the indicator light will be flickering to enter the pairing mode.*

### SET YOUR LOWEST DIMMING RANGE:

Hold dim(+) and dim(-) buttons together for 3 seconds. Lights flicker once, setting it to 1%. Repeat the button hold, lights flicker twice, setting it to 3%. Once more for 6%, lights flicker three times.

Alternatively, you can also adjust the dimming level using the app.

### APP USER GUIDE

#### ENABLE SMART FEATURES

#### 1 DOWNLOAD AND INSTALL THE TUYA APP / SMART LIFE APP

Search for the Tuya App or the Smart Life App in the App Store or Google Play Store

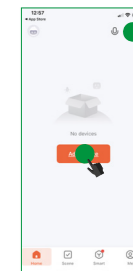


Download and install the Tuya App or the Smart Life App on your smart device

Register your email

Ensure the Wi-Fi Dimmer is in pairing mode. The indicator light must be blinking rapidly to connect. If not blinking, press and hold the power button for 5 seconds.

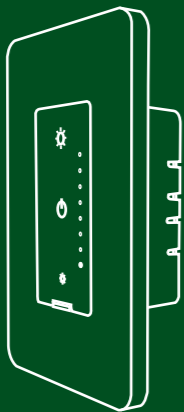
Enter the Tuya App, tap ADD DEVICE or the + sign





# GRADATEUR INTELLIGENT WIFI

# GUIDE DE DÉMARRAGE FACILE

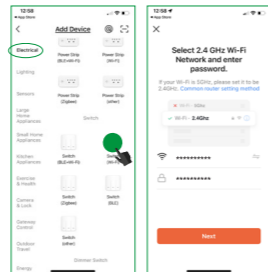


## 2 ADD THE DEVICE

Click ELECTRICAL and choose SWITCH WIFI

You will be prompted to enter your Wi-Fi network and password

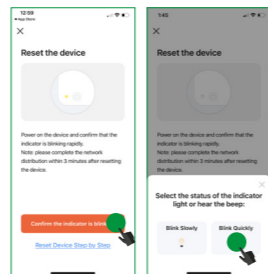
Be sure to connect to a 2.4GHz Wi-Fi network that covers your installation location.



## 3 RESET THE DEVICE

Press CONFIRM THE INDICATOR IS BLINKING

Choose BLINK QUICKLY



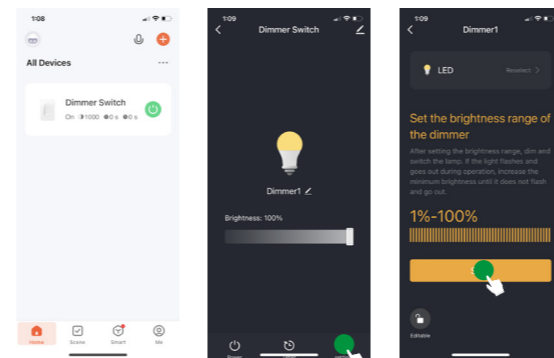
## 4

### SUCCESSFUL PAIRING

If the network connection of Tuya App is successful, the LED indicator light will stop flashing, and the DIMMER device can be found in Tuya App.

After the successful network connection, you can enter the Tuya App as shown in the picture below.

Click Setting to set the brightness range of your dimmer and press SAVE.



## 5

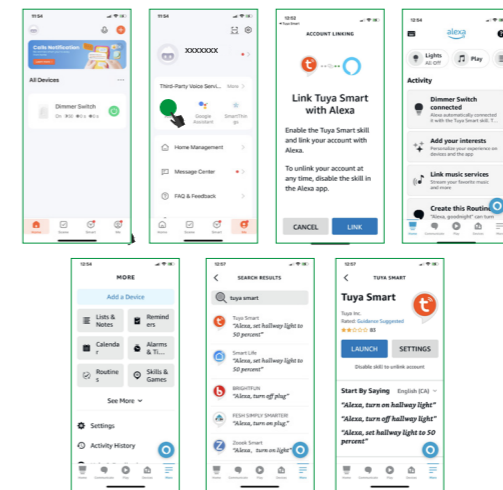
### SETTING UP A THIRD-PARTY FOR YOUR VOICE ASSISTANT

In the Tuya App menu, go to the "ME" page, click on ALEXA.

Link Tuya Smart with Alexa by clicking LINK

Once linked, press "MORE" then choose Skills & Games

Search for Tuya Smart, Launch and enjoy!



#### FCC Caution:

Any Changes or modifications not expressly approved by the party responsible for compliance could void the user's authority to operate the equipment.

This device complies with part 15 of the FCC Rules. Operation is subject to the following two conditions: (1) This device may not cause harmful interference, and (2) this device must accept any interference received, including interference that may cause undesired operation.

#### IMPORTANT NOTE:

Note: This equipment has been tested and found to comply with the limits for a Class B digital device, pursuant to part 15 of the FCC Rules. These limits are designed to provide reasonable protection against harmful interference in a residential installation. This equipment generates, uses and can radiate radio frequency energy and, if not installed and used in accordance with the instructions, may cause harmful interference to radio communications.

However, there is no guarantee that interference will not occur in a particular installation. If this equipment does cause harmful interference to radio or television reception, which can be determined by turning the equipment off and on, the user is encouraged to try to correct the interference by one or more of the following measures:

- Reorient or relocate the receiving antenna.
- Increase the separation between the equipment and receiver.
- Connect the equipment into an outlet on a circuit different from that to which the receiver is connected.
- Consult the dealer or an experienced radio/TV technician for help.

This equipment complies with FCC radiation exposure limits set forth for an uncontrolled environment. This equipment should be installed and operated with minimum distance 20cm between the radiator & your body.

#### ISED Warning

This device complies with Innovation, Science, and Economic Development Canada licence-exempt RSS standard(s). Operation is subject to the following two conditions:

- (1) this device may not cause interference, and
- (2) this device must accept any interference, including interference that may cause undesired operation of the device.

Le présent appareil est conforme aux CNR d'Innovation, Sciences et Développement économique Canada applicables aux appareils radio exempts de licence. L'exploitation est autorisée aux deux conditions suivantes :

- (1) l'appareil ne doit pas produire de brouillage, et
- (2) l'utilisateur de l'appareil doit accepter tout brouillage radioélectrique subi, même si le brouillage est susceptible d'en compromettre le fonctionnement.

The device is compliance with RF exposure guidelines, users can obtain Canadian information on RF exposure and compliance. The minimum distance from body to use the device is 20cm.

Le présent appareil est conforme Après examen de ce matériel aux conformité ou aux limites d'intensité de champ RF, les utilisateurs peuvent sur l'exposition aux radiofréquences et la conformité and compliance d'acquérir les informations correspondantes. La distance minimale du corps à utiliser le dispositif est de 20cm