



6. 6DB BANDWIDTH TEST

6.1 APPLIED PROCEDURES / LIMIT

FCC Part15 (15.247) , Subpart C				
Section	Test Item	Limit	Frequency Range(MHz)	Result
15.247(a)(2)	Bandwidth	$\geq 500\text{KHz}$ (6dB bandwidth)	2400-2483.5	PASS

6.1.1 TEST PROCEDURE

1. Set RBW = 100 kHz.
2. Set the video bandwidth (VBW) \geq RBW.
3. Detector = Peak.
4. Trace mode = max hold.
5. Sweep = auto couple.
6. Allow the trace to stabilize.
7. Measure the maximum width of the emission that is constrained by the frequencies associated with the two outermost amplitude points (upper and lower frequencies) that are attenuated by 20 dB relative to the maximum level measured in the fundamental emission.

6.1.2 DEVIATION FROM STANDARD

No deviation.

6.1.3 TEST SETUP



6.1.4 EUT OPERATION CONDITIONS

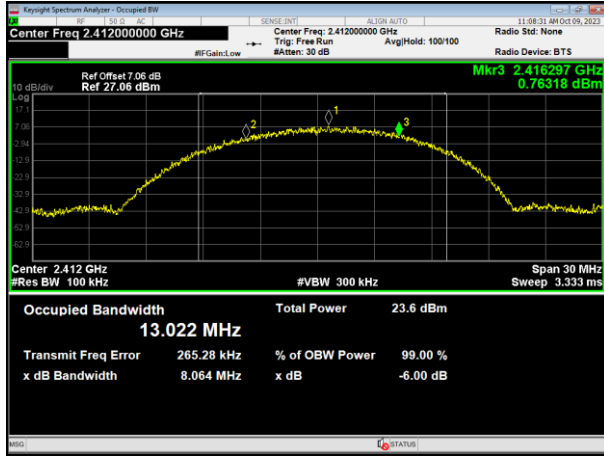
The EUT tested system was configured as the statements of 2.3 Unless otherwise a special operating condition is specified in the follows during the testing.

**6.1.5 TEST RESULTS**

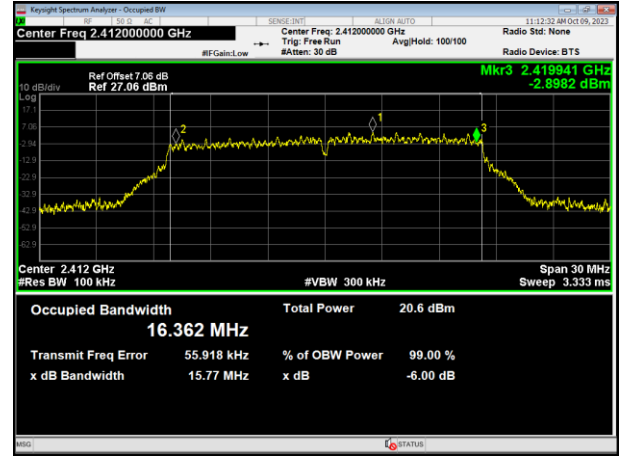
	Test Channel	6dB Bandwidth (MHz)	Limit (MHz)	Result
802.11b	Low	8.06	0.5	Pass
	Middle	7.38	0.5	Pass
	High	7.24	0.5	Pass
802.11g	Low	15.77	0.5	Pass
	Middle	15.07	0.5	Pass
	High	15.02	0.5	Pass
802.11n HT20	Low	12.53	0.5	Pass
	Middle	15.01	0.5	Pass
	High	12.64	0.5	Pass
802.11n HT40	Low	30.03	0.5	Pass
	Middle	33.83	0.5	Pass
	High	35.04	0.5	Pass



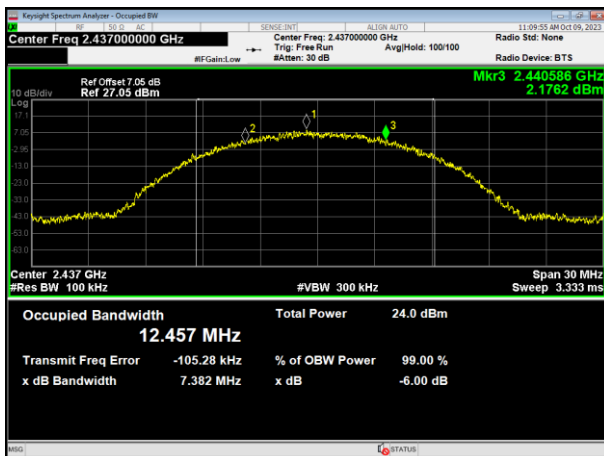
802.11b



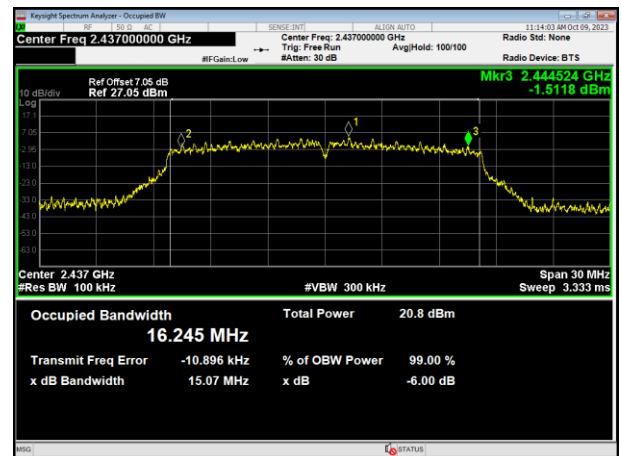
802.11g



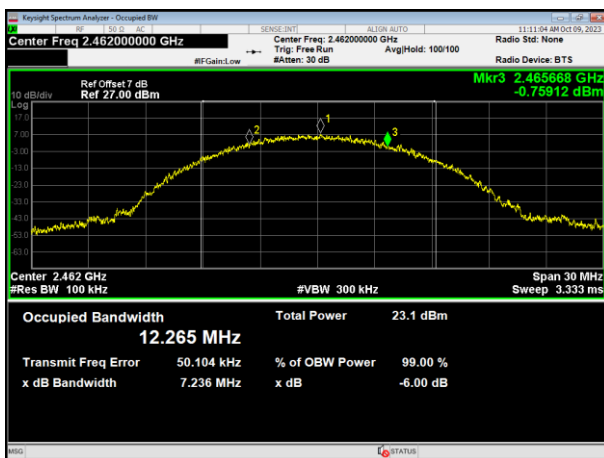
2412MHz



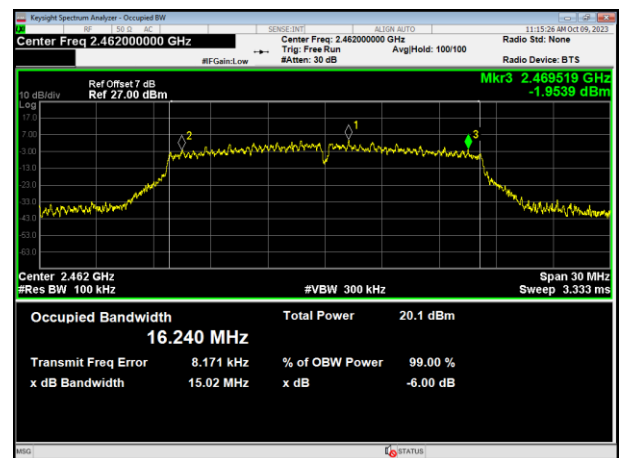
2412MHz



2437MHz



2437MHz

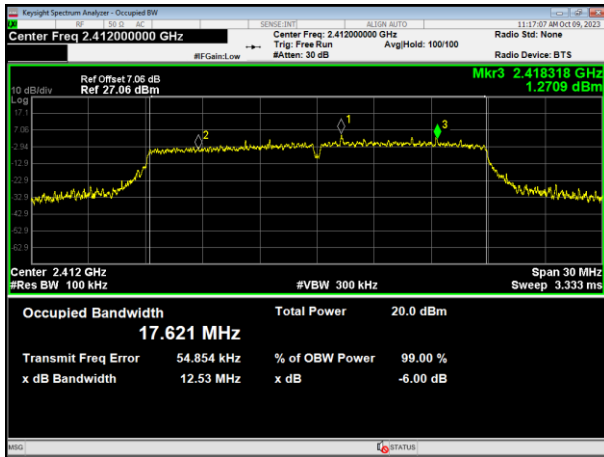


2462MHz

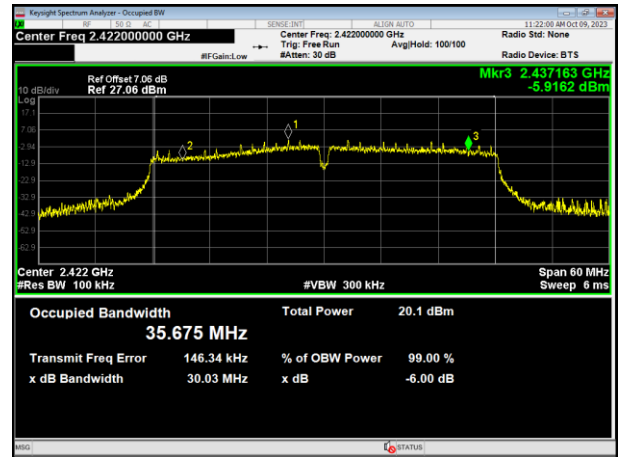
2462MHz



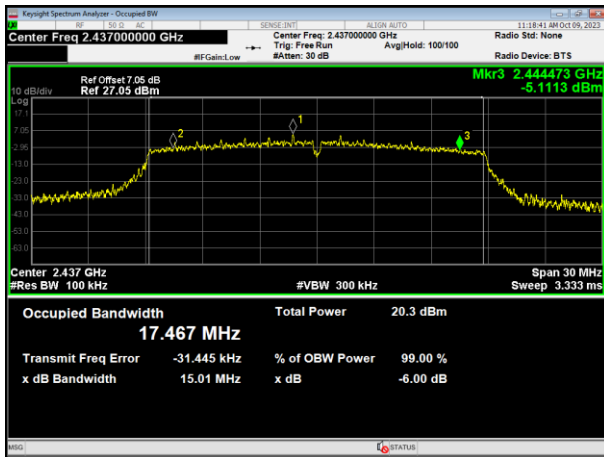
802.11n HT20



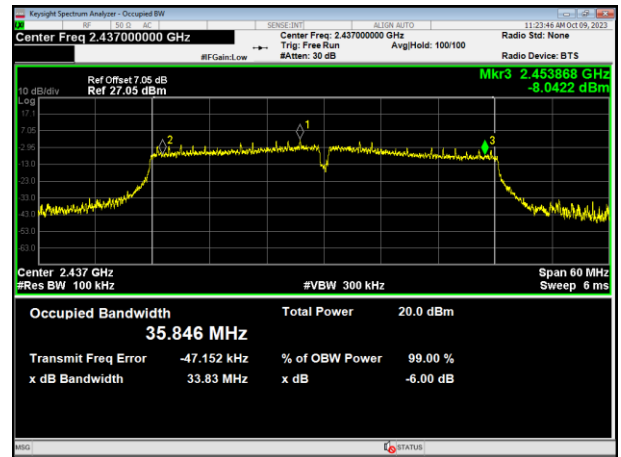
802.11n HT40



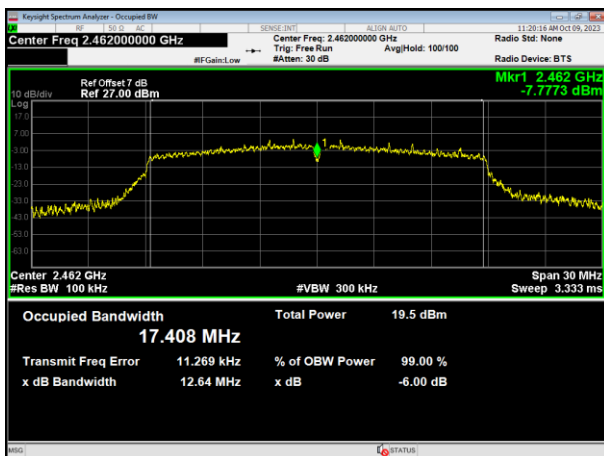
2412MHz



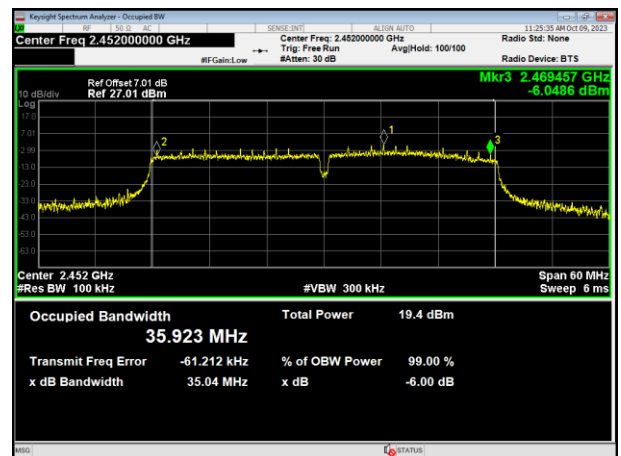
2422MHz



2437MHz



2437MHz



2462MHz

2452MHz



7. ANTENNA REQUIREMENT

7.1 STANDARD REQUIREMENT

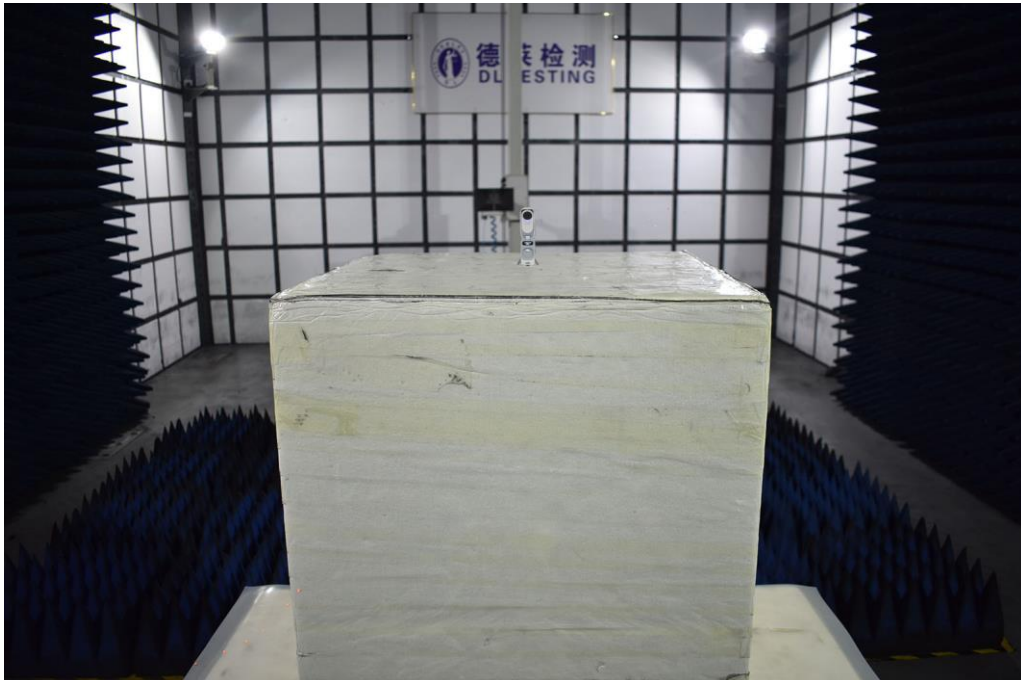
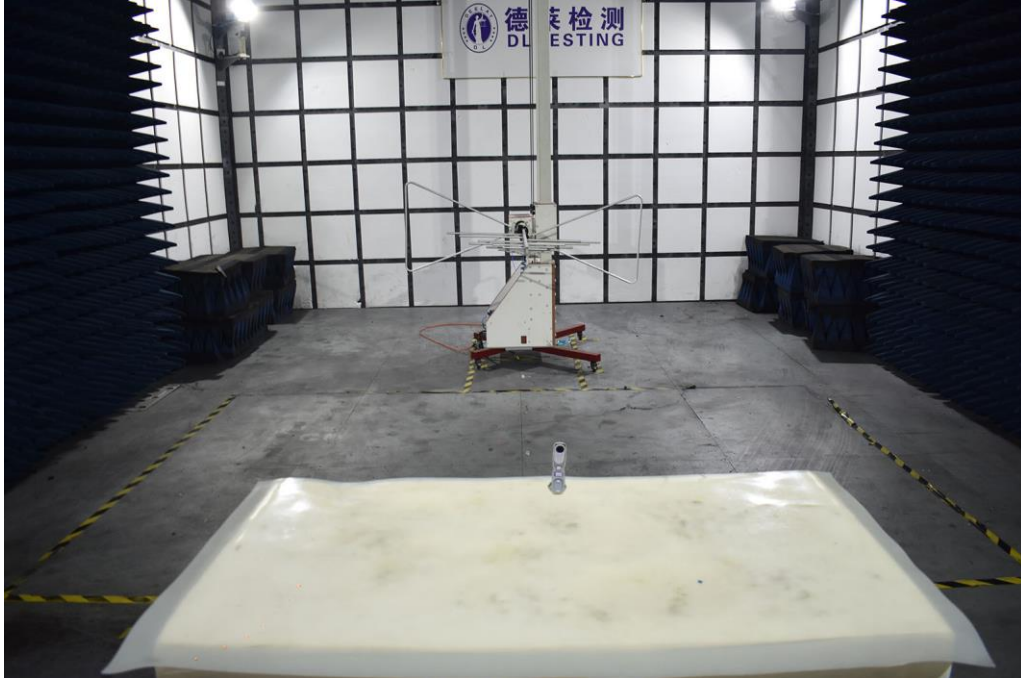
15.203 requirement: For intentional device, according to 15.203: an intentional radiator shall be designed to ensure that no antenna other than that furnished by the responsible party shall be used with the device.

7.2 EUT ANTENNA

The EUT antenna is Internal Antenna, It comply with the standard requirement.

8. TEST SEUUP PHOTO

Radiated Measurement Photos





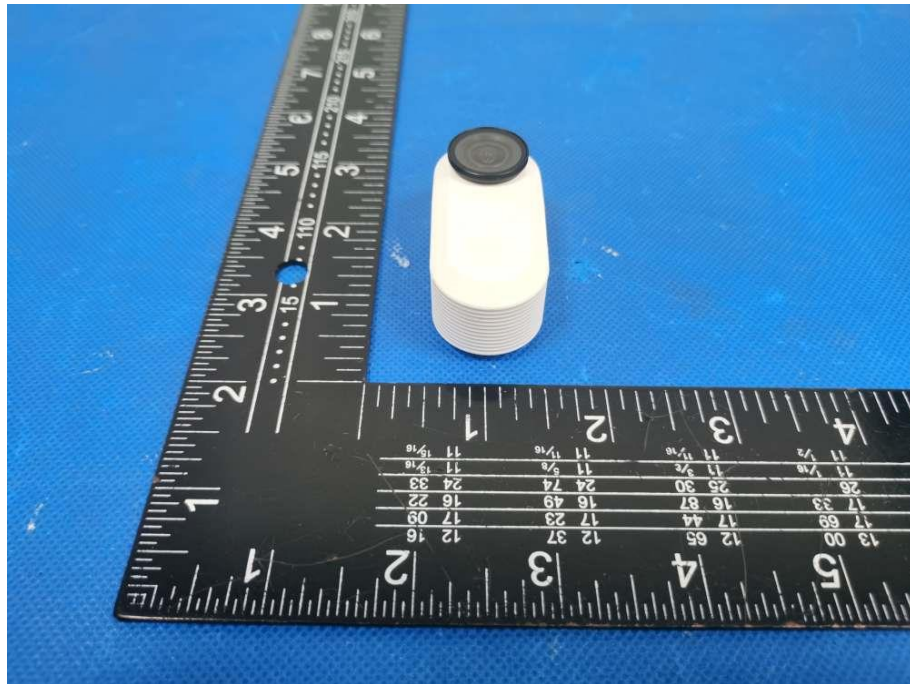
Conducted Measurement Photos

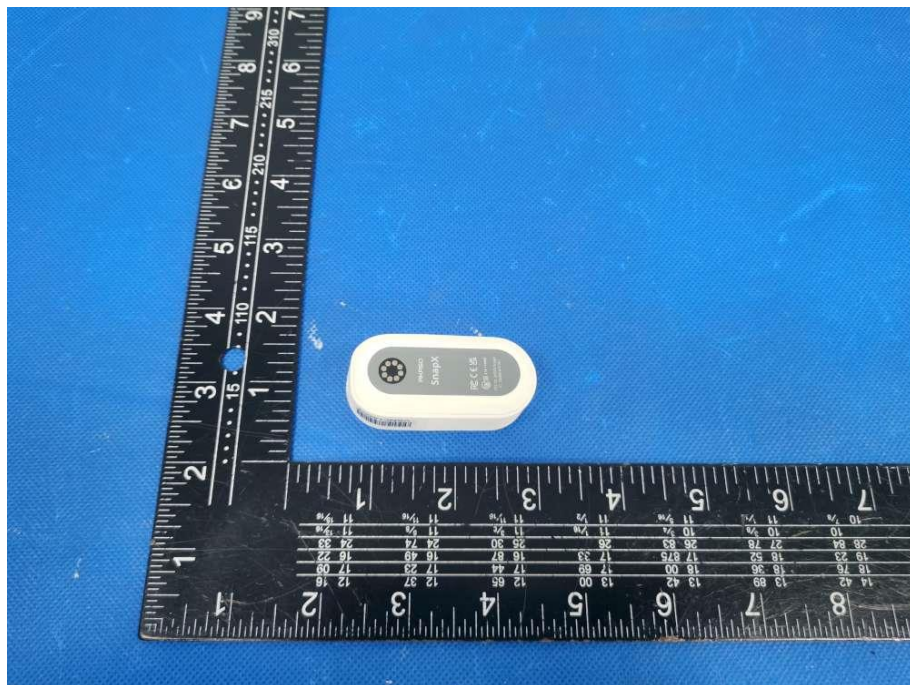
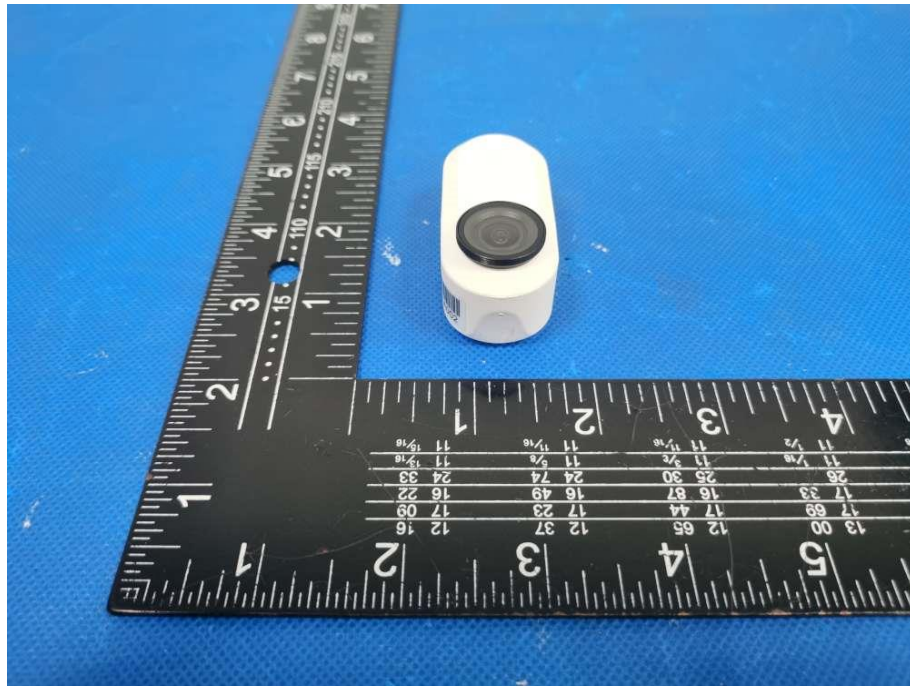


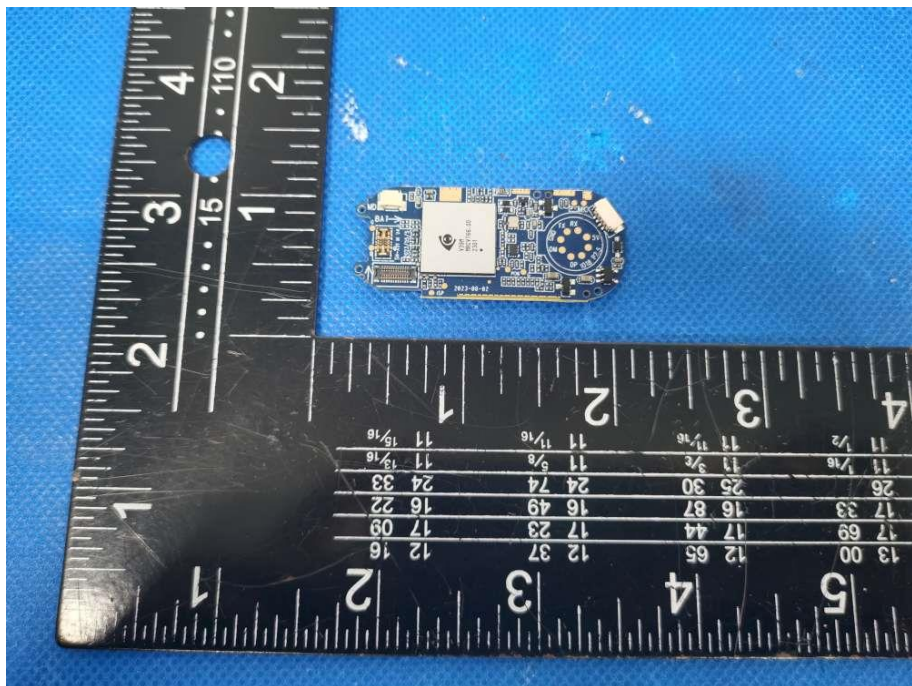
9. EUT PHOTO

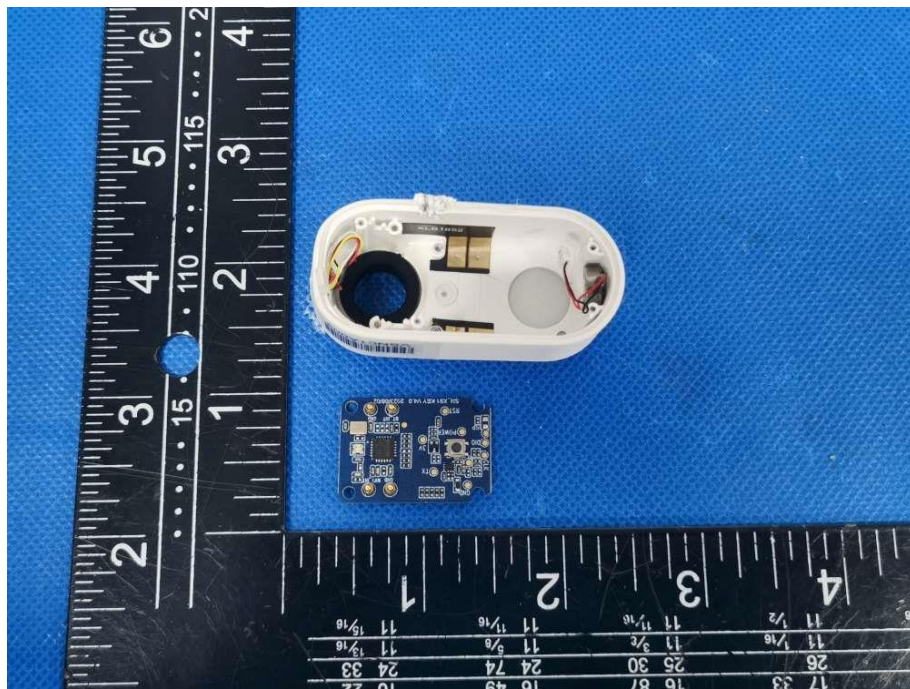
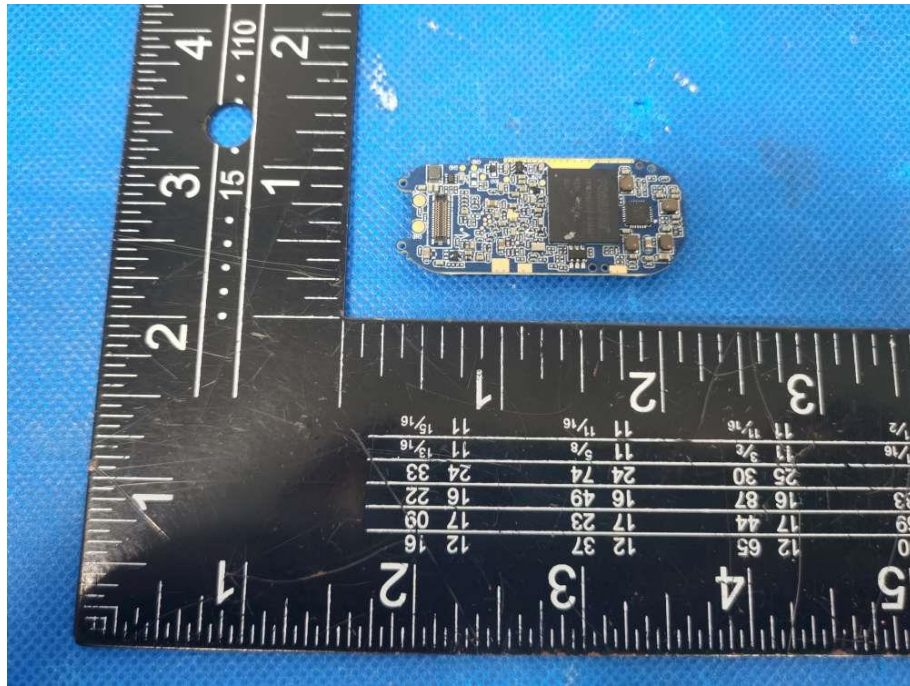


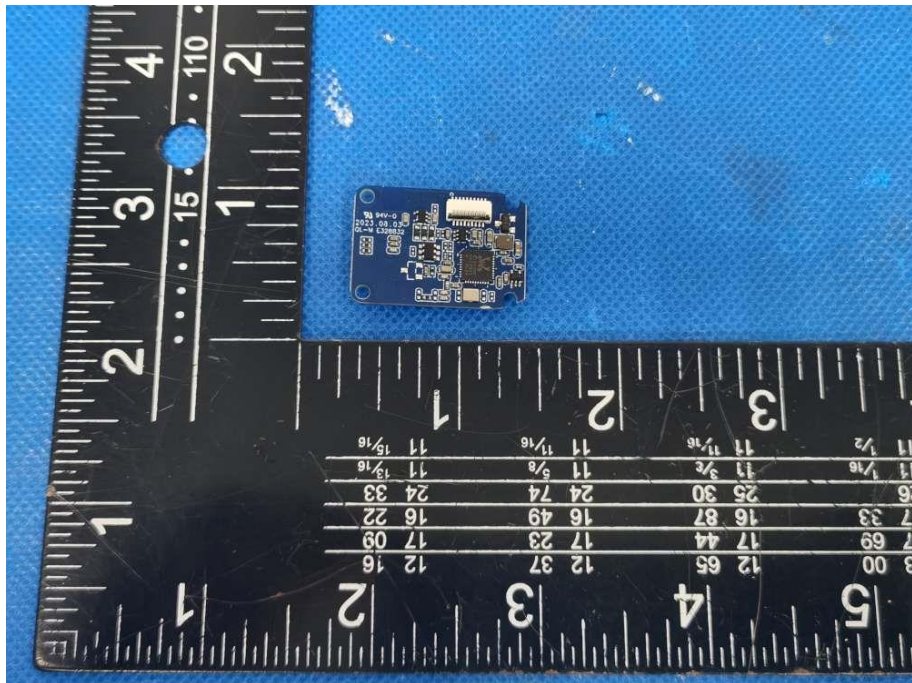
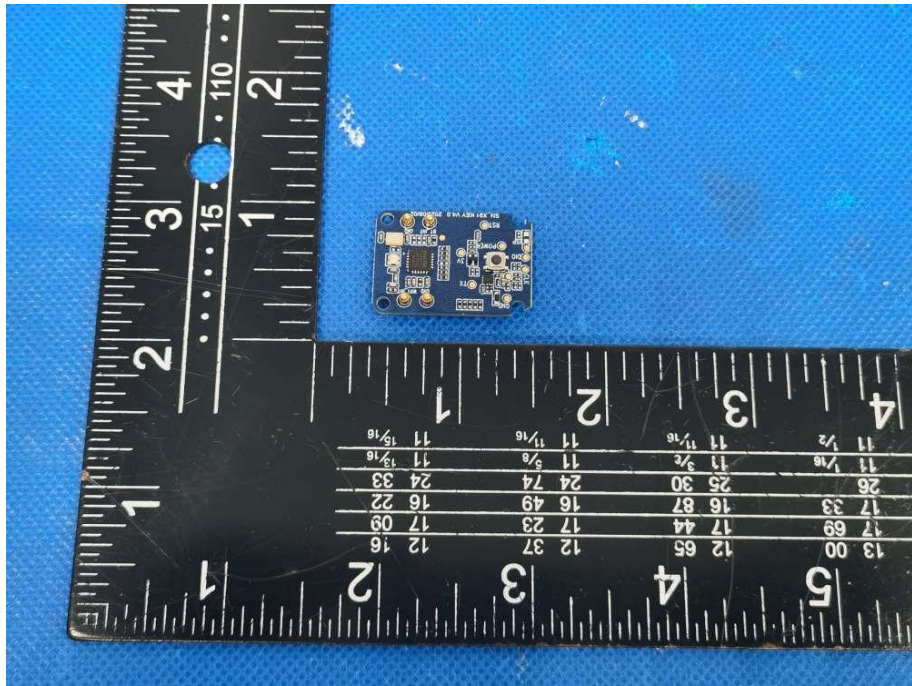


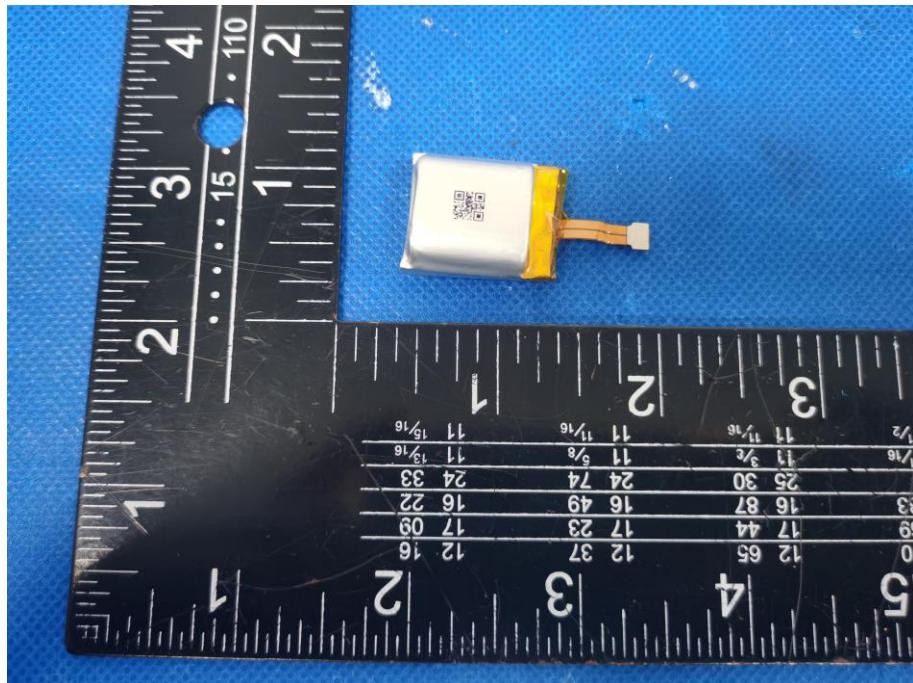
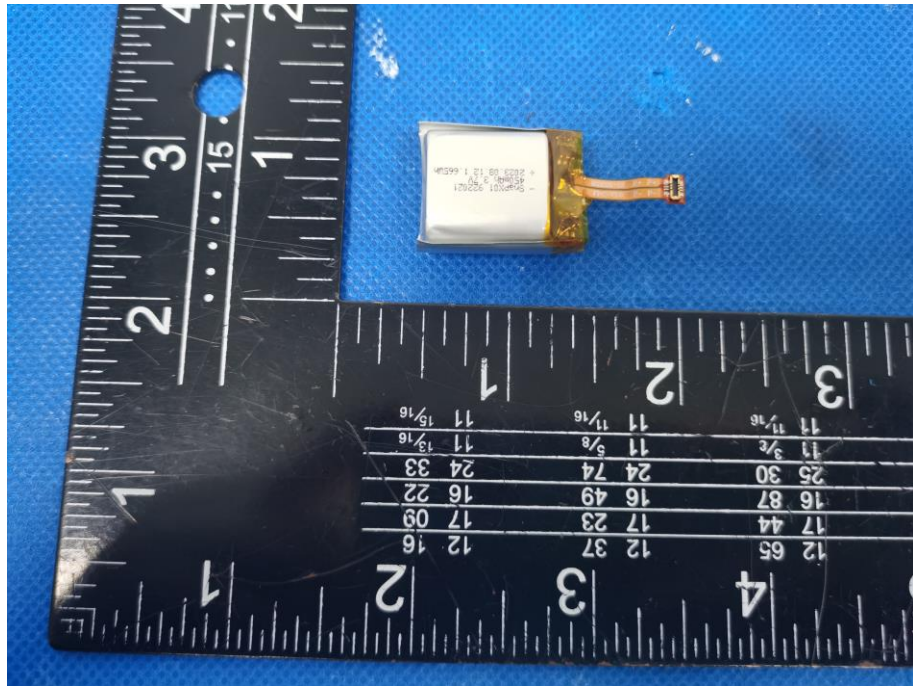


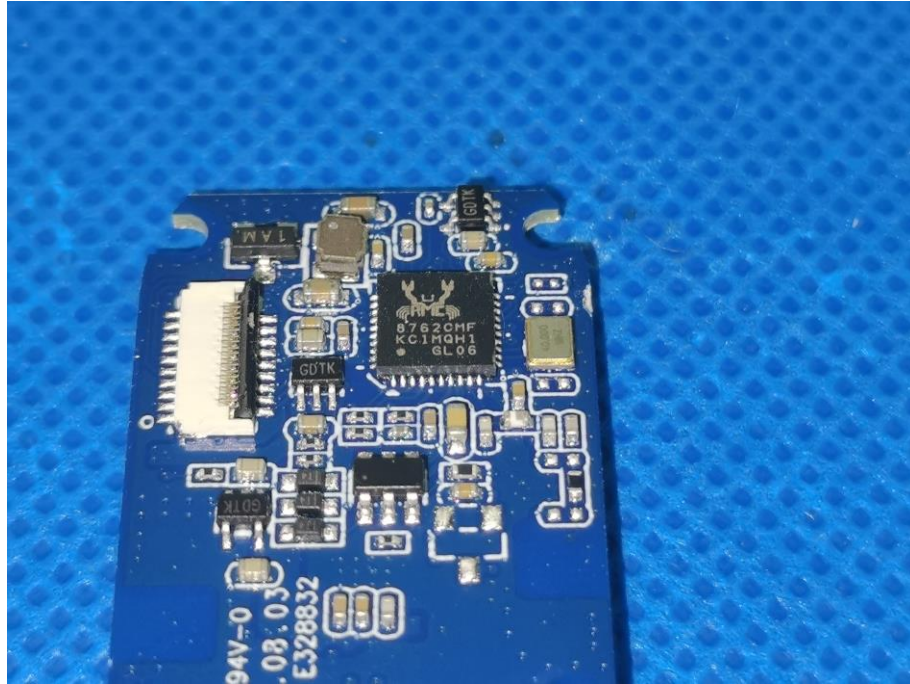












***** END OF REPORT *****