

1. Antenna Description:

Antenna type	PCB antenna
Model	XH-S3E
Frequency range	2400-2500MHz
Manufacturer	ShenZhen Sparkleiot Technology CO., LTD
ANT Peak Gain	0.76 dBi

2. Antenna Photo:

Length :10.82mm
Width:4.18mm



3. Test Equipment & Conditions

3.1 Test instrument

VSWR is tested using Agilent E5071B connected to a hand mechanism, and the status is free space.

3.2 Test environment and methods

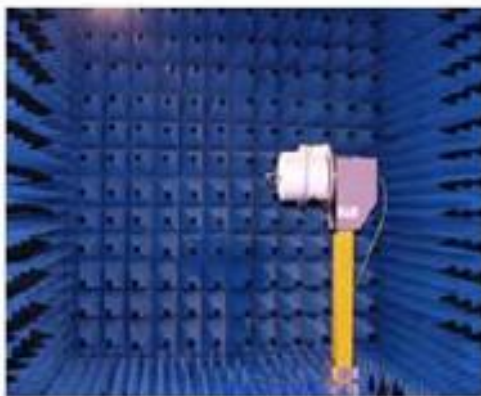
Dark room specifications: ETS-743

TD-SCDMA test equipment: StarPoint SP6010/Agilent 8960

LTE-TDD/FDD-SCDMA test equipment: StarPoint SP8011/CMW500

WCDMA/GSM/CDMA test equipment: Agilent 8960

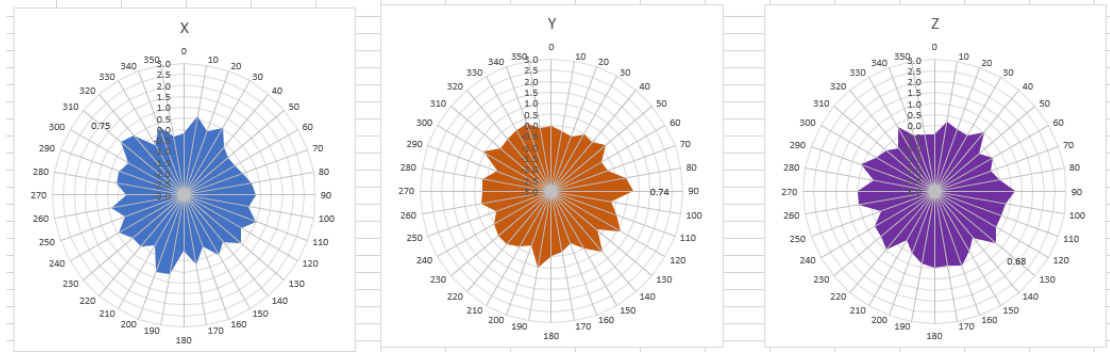
Passive efficiency testing equipment: Agilent Technologies E5071B



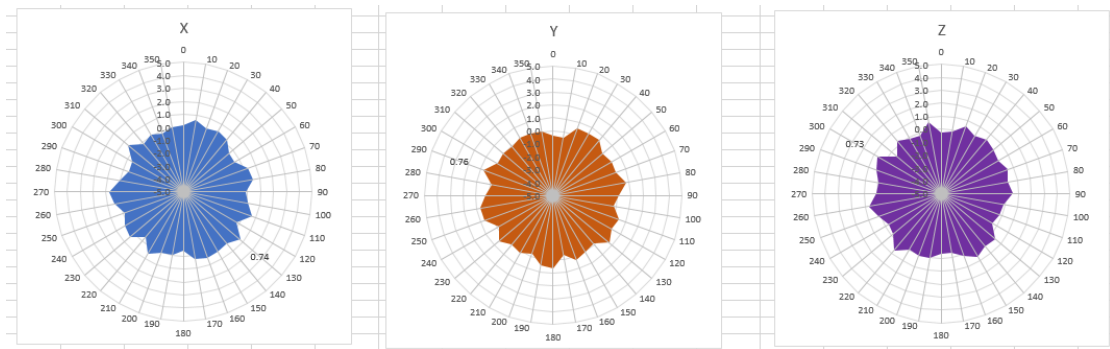
4 . Antenna Radiation Pattern



2400MHz



2450MHz



2500MHz

