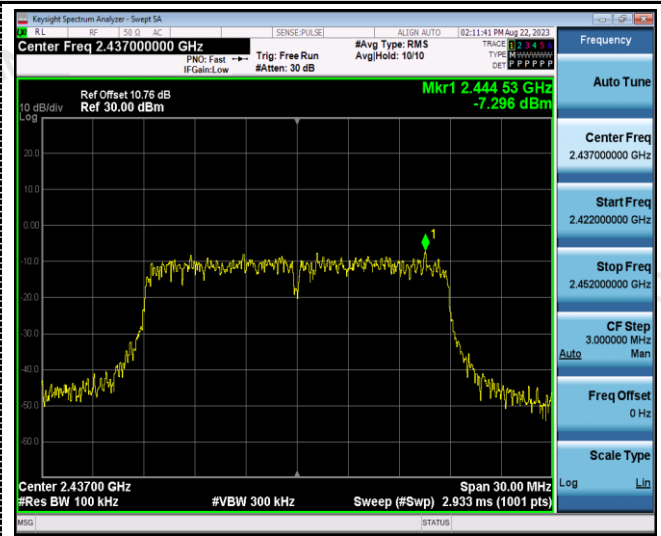


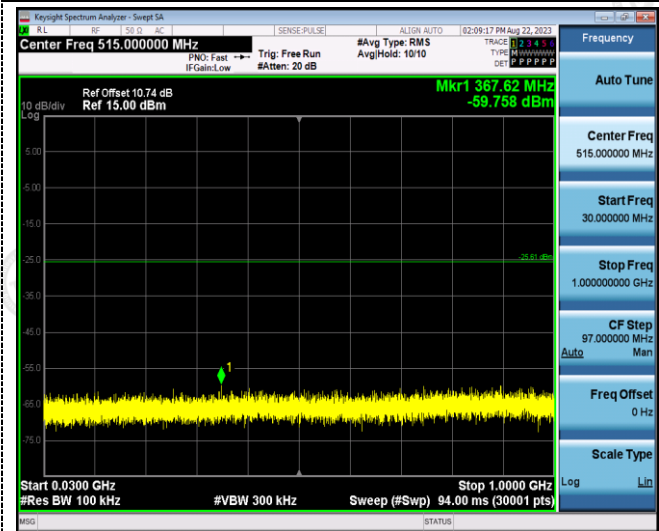
802.11n20



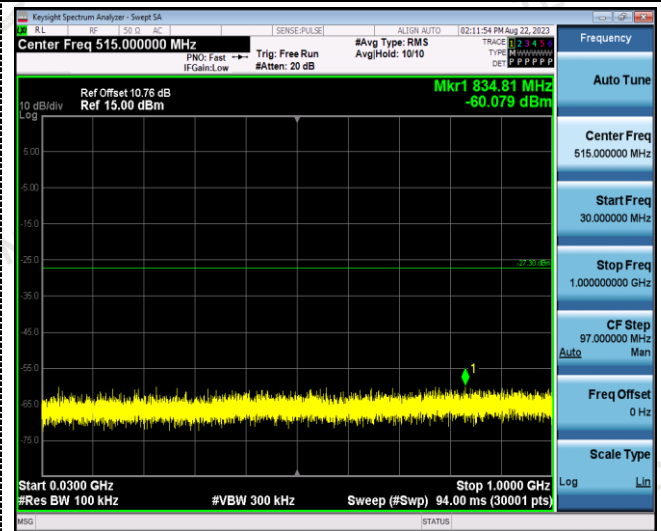
Reference  
CH01



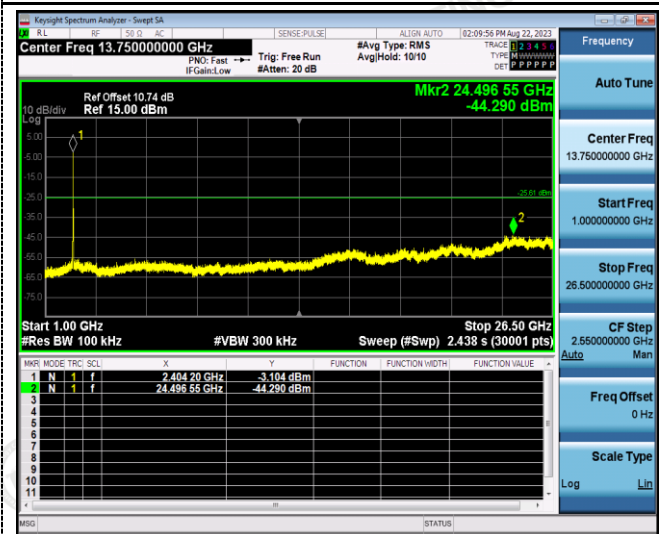
Reference  
CH06



30MHz-3GHz



30MHz-3GHz



3GHz-25GHz

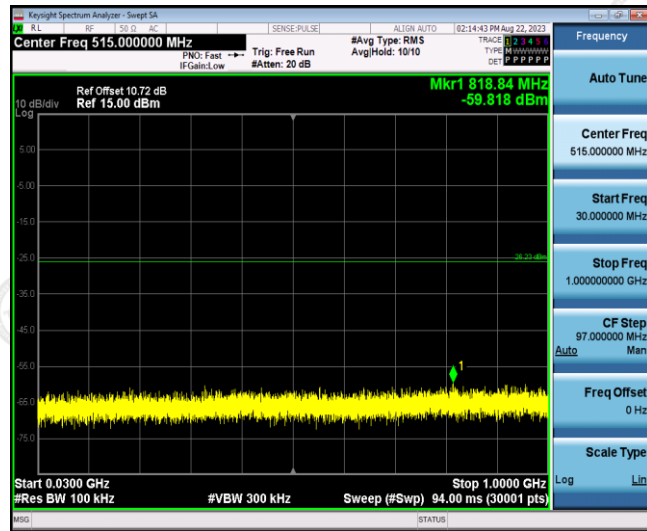


3GHz-25GHz

802.11n20



Reference  
CH11

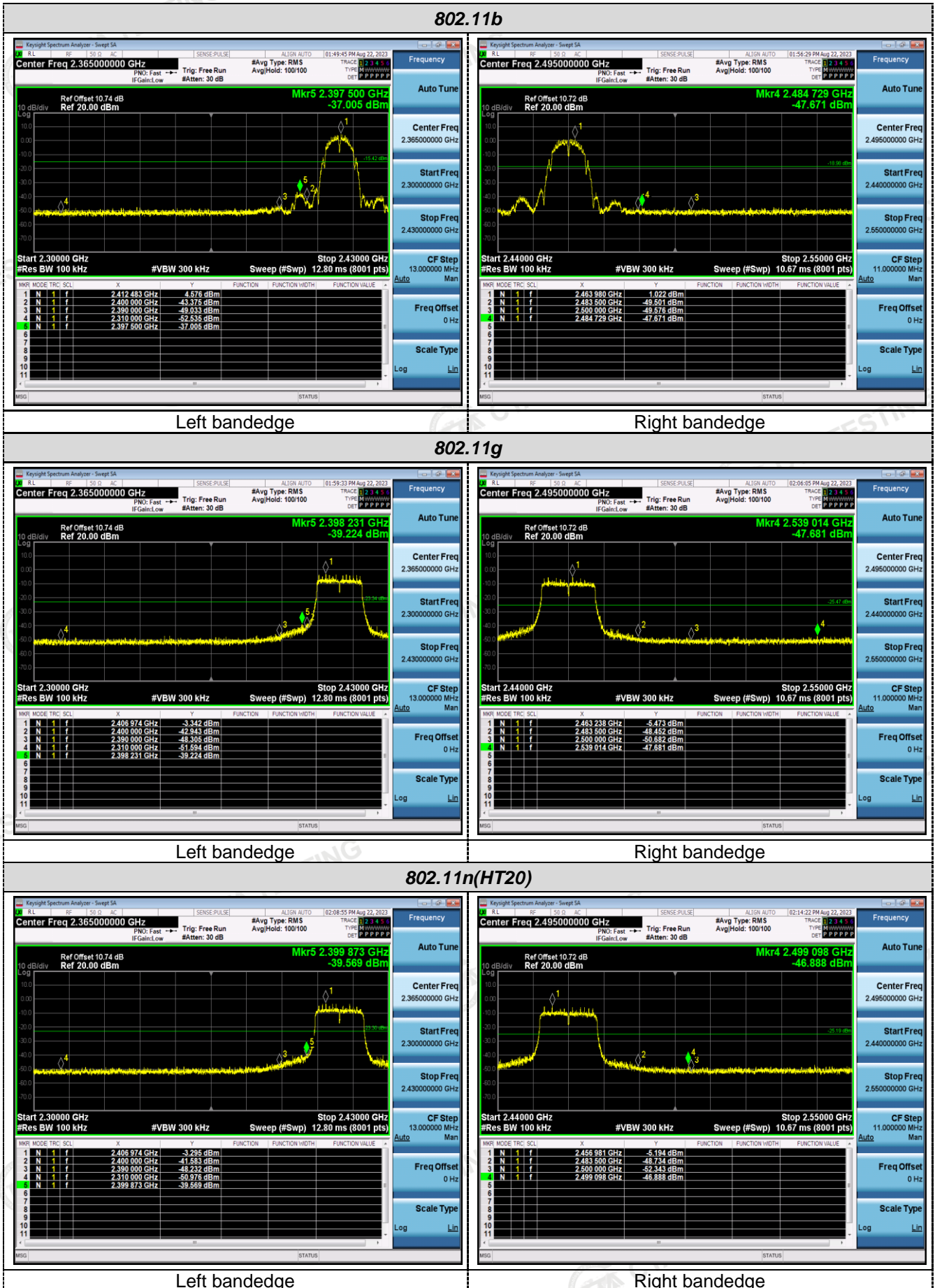


30MHz-3GHz



3GHz -25GHz

**Band-edge Measurements for RF Conducted Emissions:**



## 4.7 Antenna Requirement

### Standard Applicable

**For intentional device, according to FCC 47 CFR Section 15.203:**

An intentional radiator shall be designed to ensure that no antenna other than that furnished by the responsible party shall be used with the device. The use of a permanently attached antenna or of an antenna that uses a unique coupling to the intentional radiator, the manufacturer may design the unit so that a broken antenna can be replaced by the user, but the use of a standard antenna jack or electrical connector is prohibited

**FCC CFR Title 47 Part 15 Subpart C Section 15.247(c) (1) (I):**

(i) Systems operating in the 2400-2483.5 MHz band that is used exclusively for fixed. Point-to-point operations may employ transmitting antennas with directional gain greater than 6dBi provided the maximum conducted output power of the intentional radiator is reduced by 1 dB for every 3 dB that the directional gain of the antenna exceeds 6dBi.

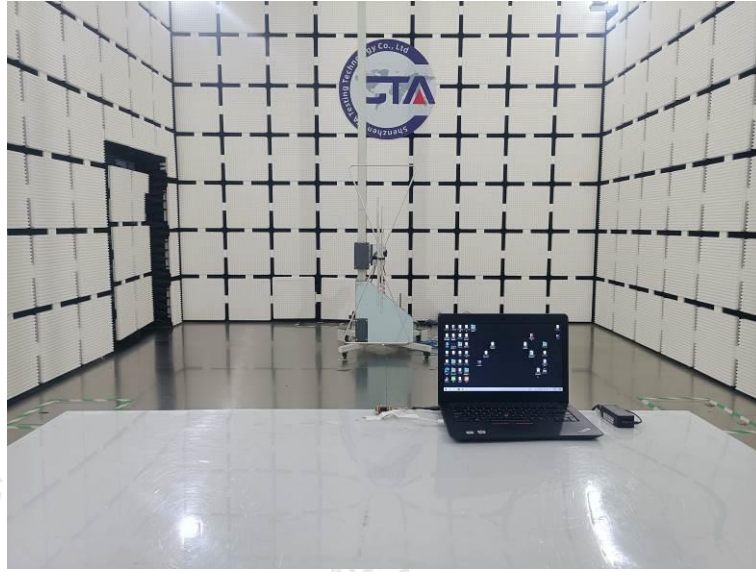
### Test Result:

The maximum gain of antenna was 0.47 dBi.

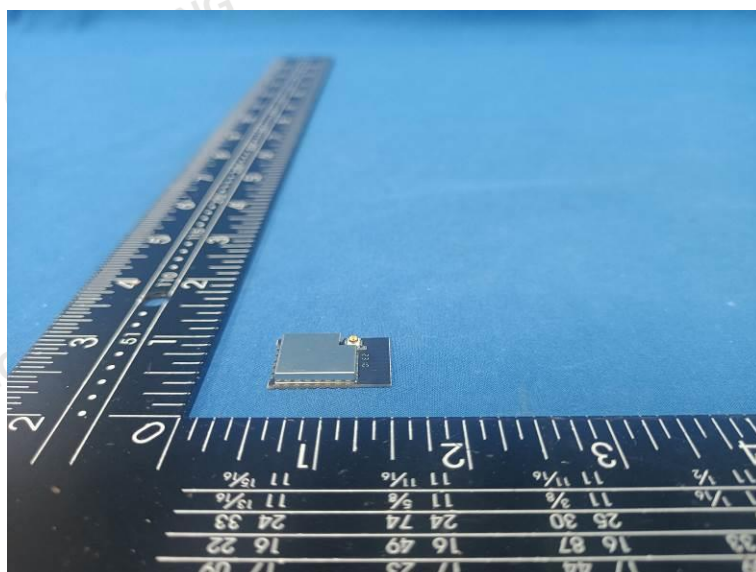
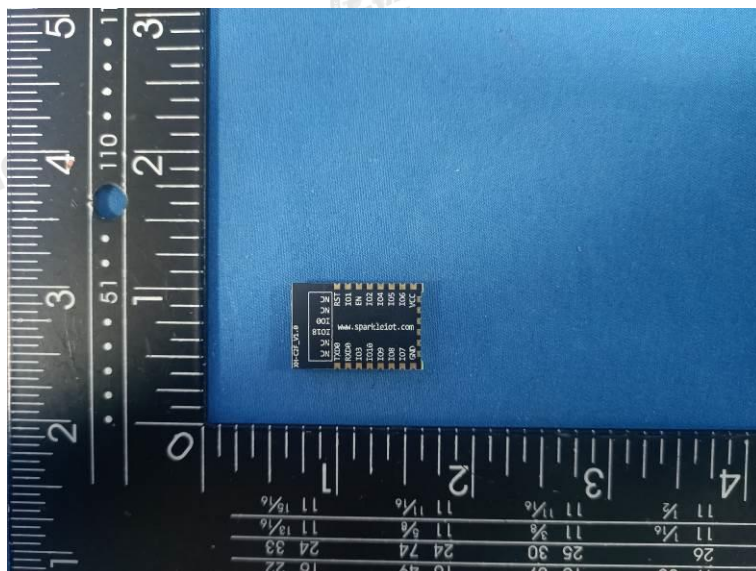
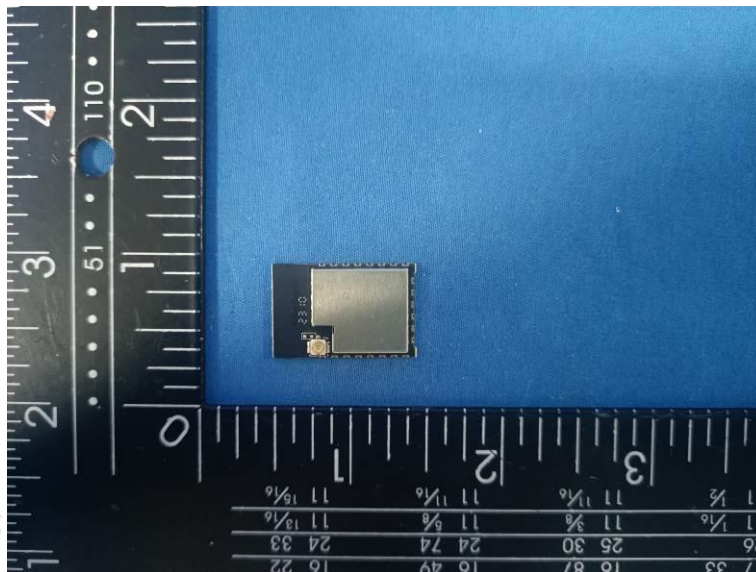
Remark: The antenna gain is provided by the customer, if the data provided by the customer is not accurate, Shenzhen CTA Testing Technology Co., Ltd. does not assume any responsibility.



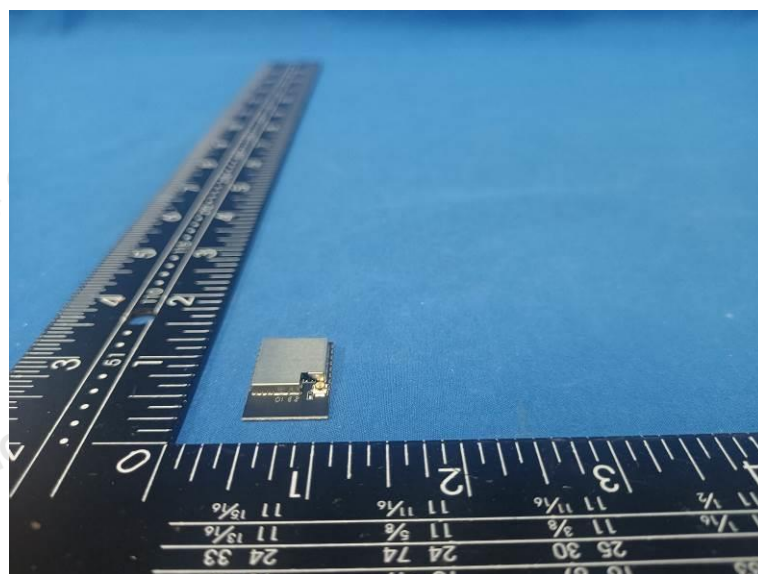
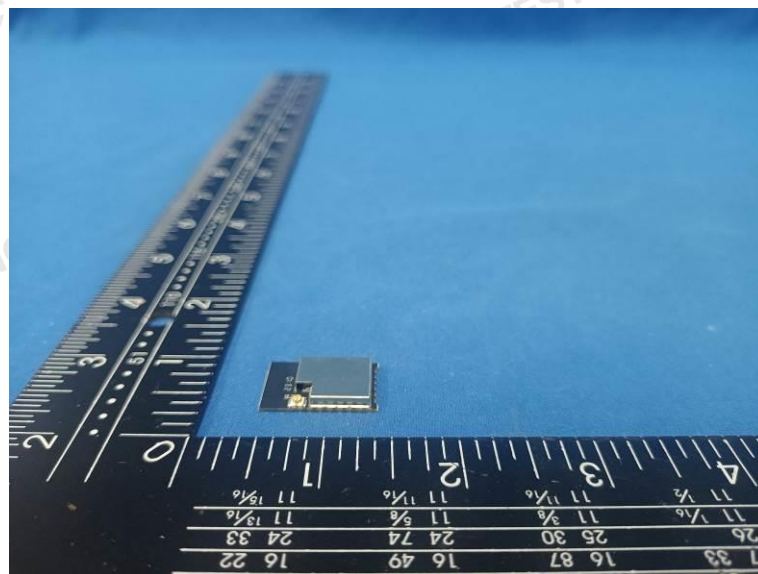
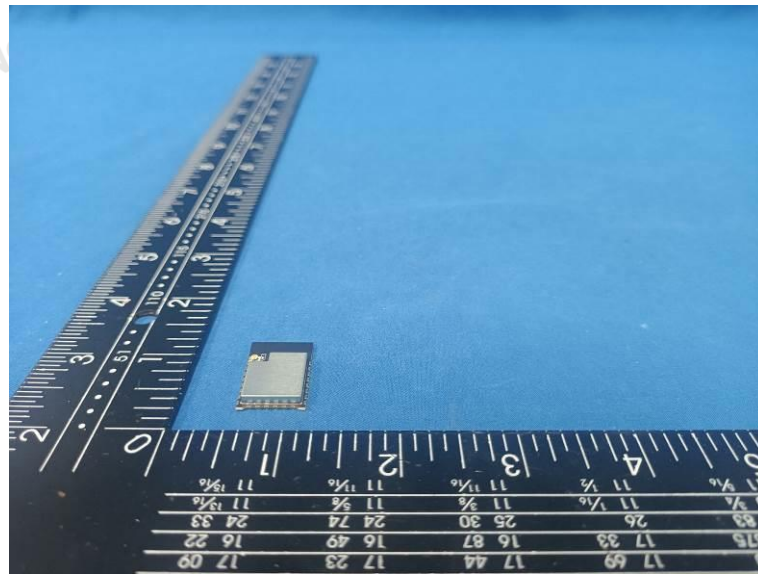
## 5 Test Setup Photos of the EUT



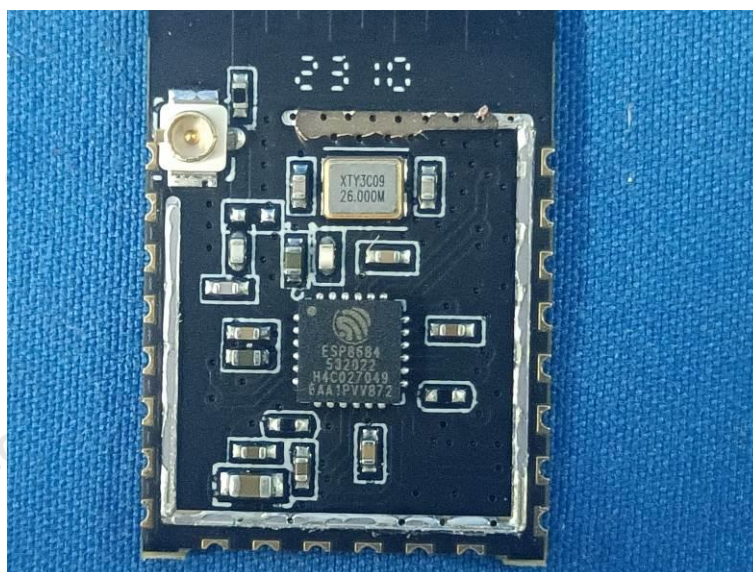
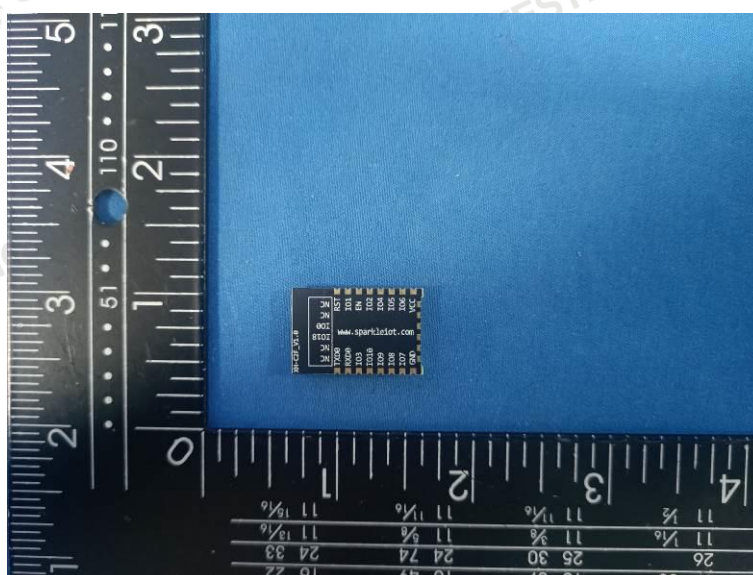
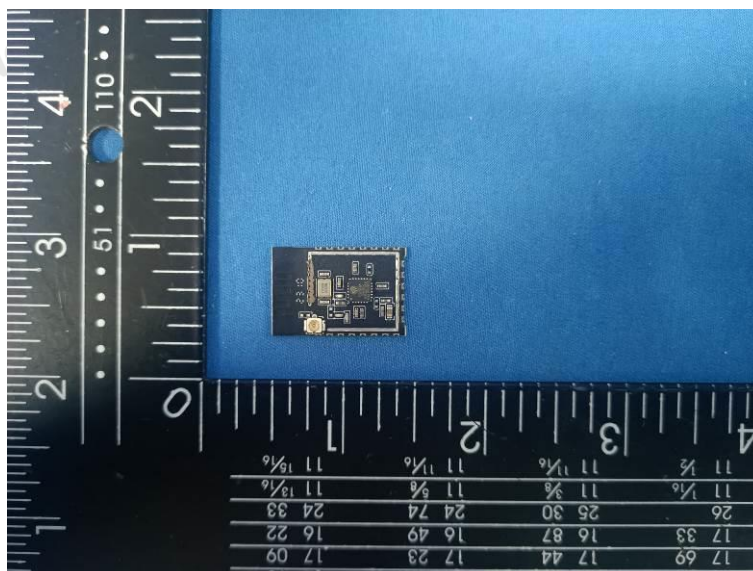
## 6 Photos of the EUT











\*\*\*\*\* End of Report \*\*\*\*\*