

深圳市德霖通信技术有限公司
 SHENZHEN DELIN COMMUNICATION TECHNOLOGY CO., LTD.

产品规格书
 Product Specification

产品名称 Product Number	WIFI 棒状天线	编号 Serial Number	2021041601
产品型号 Product Type	AP507-2.4&5.8G-11185-1.13	版本号 Version Number	1.0
		物料编码 Materiel Number	

变更履历表
 Description Record

序号 NO:	版本号 Version number	更改前描述 Description Before Modification	更改后描述 Description After Modification	日期 Date
1	1.0	初始新建		2021.04.16

备注:

深圳市德霖通信技术有限公司

地址：中国广东省深圳市龙岗区坂田街道贝尔路2号神舟电脑大厦10F

地址：中国广东省广州市从化区神岗广从南路22号

Tel: 0755-29015125

Email: info@delincomm.com support@delincomm.com

<https://www.delincomm.com>

一、 产品介绍:

- 外观精美
- 体积小
- 全天候工作
- 低驻波、抗干扰

二、 天线技术参数:

Design Specifications	Typical
天线形式	2.4G&5G WIFI 棒状天线
工作频率(Working Frequency)	2400-2500/5150-5850MHz
增益 (Max Gain)	1.93 dBi
天线效率 (Antenna efficiency)	40%
电压驻波比 (VSWR)	≤2.0
极化方式(Polarization)	垂直
辐射方向(Radiation pattern)	全向
馈电阻抗(Impedance)	50 Ω
功率容量(Power Capacity)	3W
天线接口(Interface)	IPEX I代
天线尺寸(Overall dimensions)	50*7.5mm
重量(Weight)	≤10g
工作温度(Operatin Temp)	-40°C~80°C
储存温度(Storing Temp)	-45°C~85°C

三、产品结构图纸 (mm) :

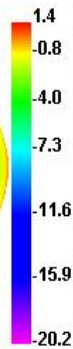
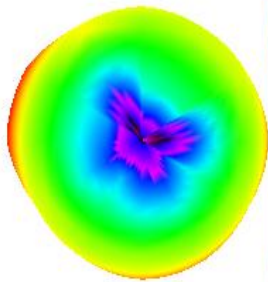


<https://www.delincomm.com/>

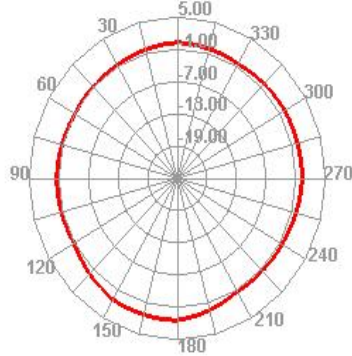
Passive Test For 5150-5850

Freq (MHz)	Effi (%)	Gain (dBi)
5150	48.82	1.45
5220	45.68	1.5
5290	49.41	1.93
5360	45.38	1.73
5430	48.56	1.38
5500	46.16	1.48
5570	43.26	1.74
5640	48.55	1.25
5710	48.77	1.35
5780	45.95	1.61
5850	46.15	1.63

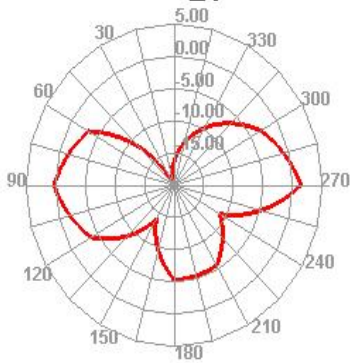
5150.000MHz



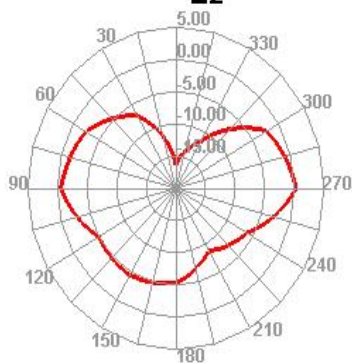
5150.000MHz H



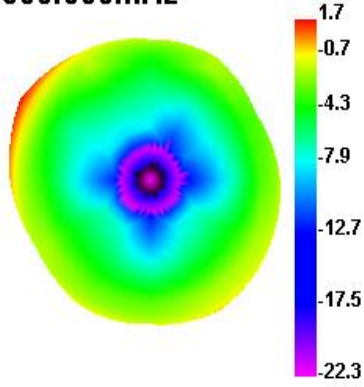
5150.000MHz E1



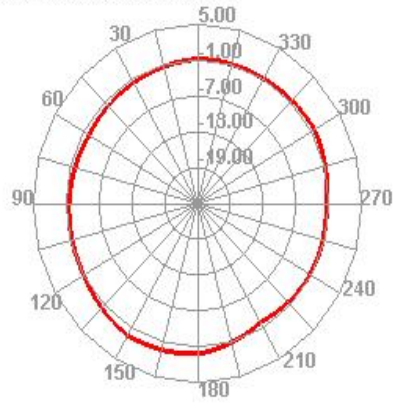
5150.000MHz E2



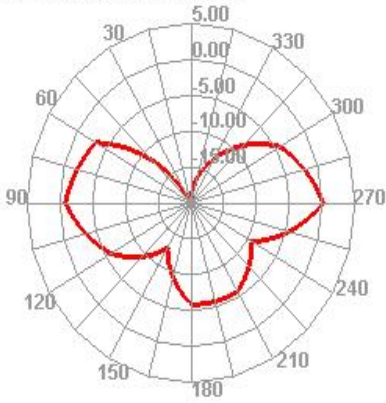
5500.000MHz



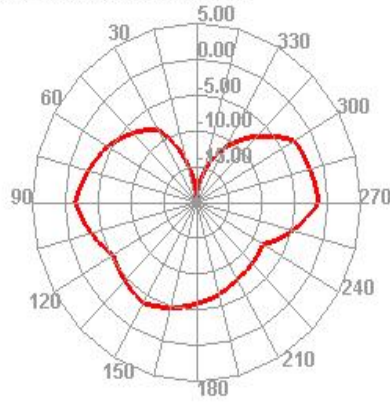
5500.000MHz H



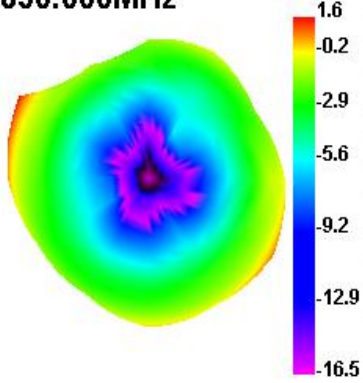
5500.000MHz E1



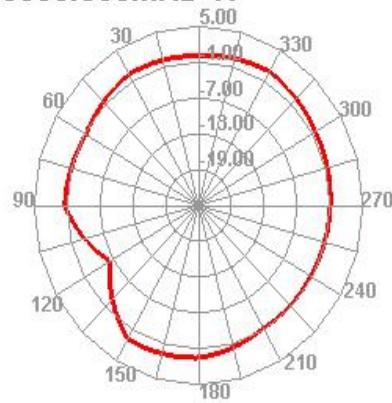
5500.000MHz E2



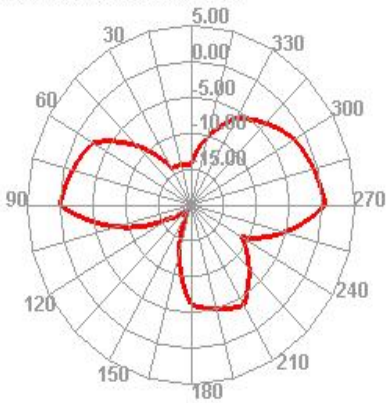
5850.000MHz



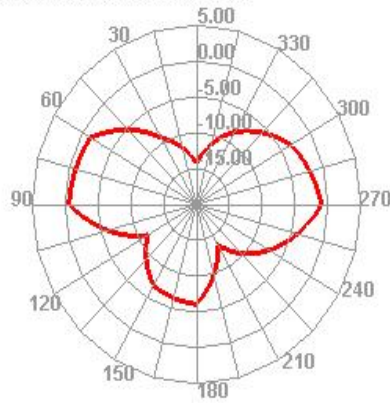
5850.000MHz H



5850.000MHz E1

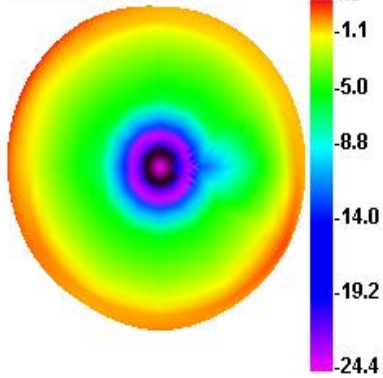


5850.000MHz E2

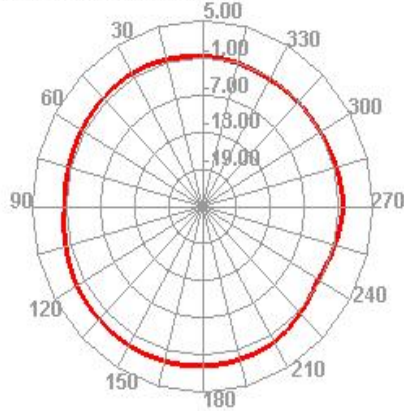


Passive Test For 2400-2500		
Freq (MHz)	Effi (%)	Gain (dBi)
2400	58.28	1.51
2410	57.11	1.82
2420	55.78	1.68
2430	58.01	1.7
2440	62.23	1.01
2450	67.64	1.27
2460	67.18	1.29
2470	63.67	1.08
2480	65.93	1.28
2490	67.39	1.51
2500	64.38	1.23

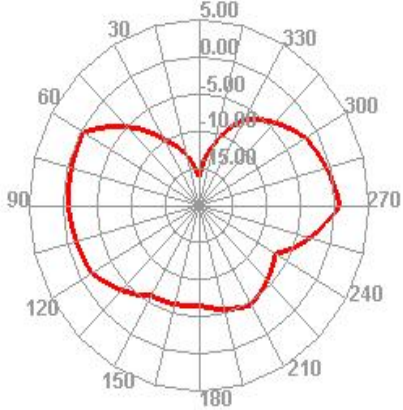
2400.000MHz



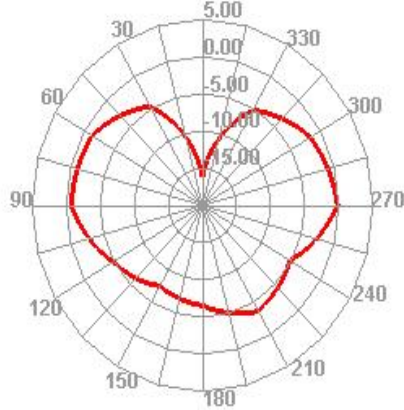
2400.000MHz H



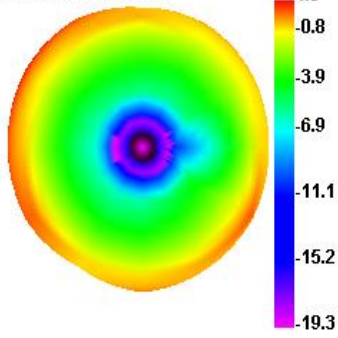
2400.000MHz E1



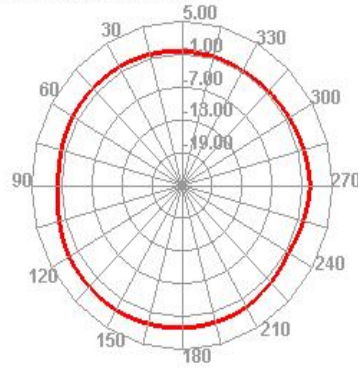
2400.000MHz E2



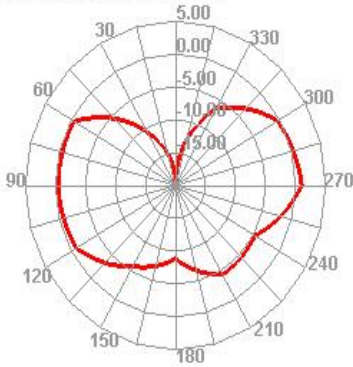
2450.000MHz



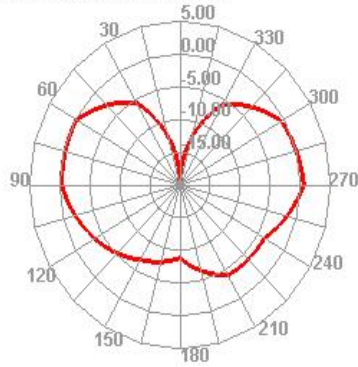
2450.000MHz H



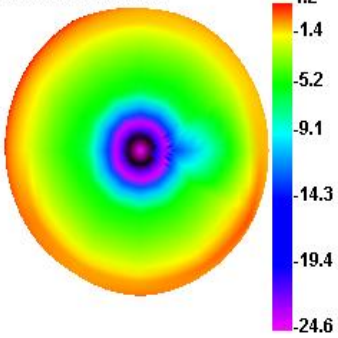
2450.000MHz E1



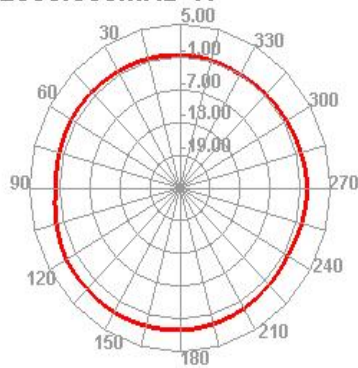
2450.000MHz E2



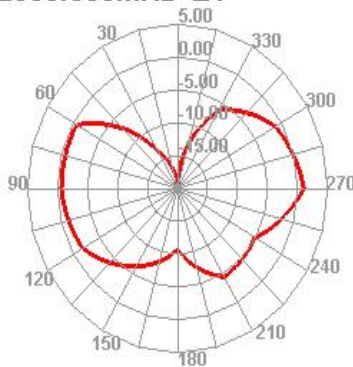
2500.000MHz



2500.000MHz H



2500.000MHz E1



2500.000MHz E2

