

label and location

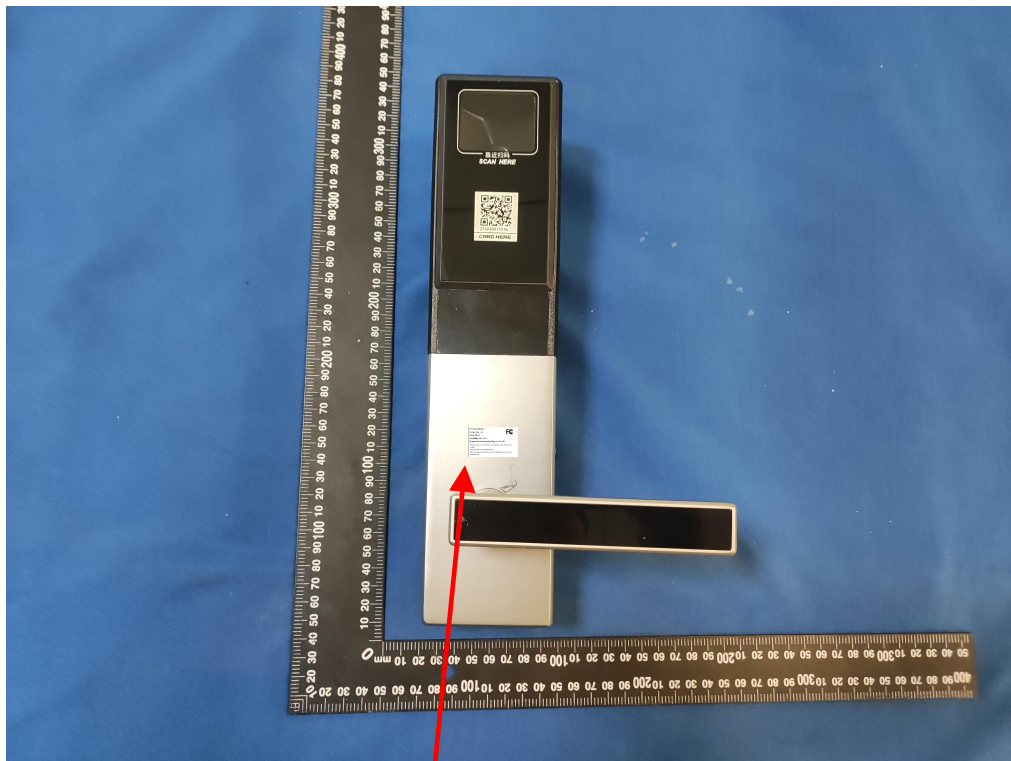


Fig.1

FCC ID:2BCJK-QRA

Intelligent door lock

Model: QRA05

Input:Battery AAA 1.5V*4

Shaoguan Innovate Technology Equipment Co., Ltd



This device complies with Part 15 of the FCC Rules. Operation is subject to the following two conditions:

- (1) This device may not cause harmful interference.
- (2) This device must accept any interference received, including interference that may cause undesired operation.