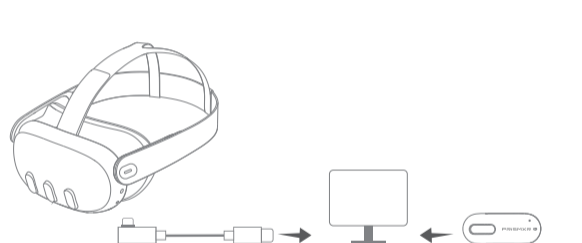




Download PrismXR App  
Discover more: [www.prismxr.com](http://www.prismxr.com)

## VR Linking With PC

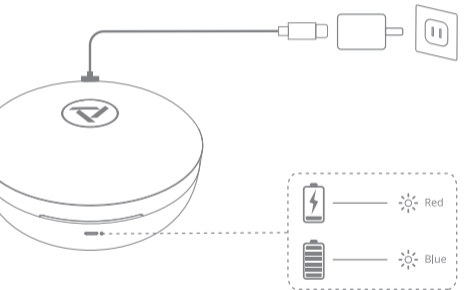
- 1 Connect the link cable from a USB C port on your PC to your VR headset.
- 2 Plug the dongle into another USB C port on your PC to use your PrismXR earbuds.



09

## Charging your Charging Case

- 1 Connect the charging case to the power supply.
- 2 A red LED indicator signifies that the charging case is currently charging. A blue LED indicator signifies that the charging case is fully charged.



10

## Safety Instruction

- Avoid dropping.
- Do not disassemble.
- Avoid extreme temperature.
- Use original or certified cables.
- Do not wear the product while charging.
- Do not use any corrosive cleaner or oil to clean.
- Do not use the product outdoors during thunderstorms.
- Keep out of the reach of children. The product contains small parts which may be a choking hazard.
- The battery shall not be exposed to excessive heat such as sunshine, fire or the like.
- Do not use the product in environments with too high or too low temperatures, and never expose the products to strong sunshine or very wet environments.
- Ensure there is no liquid, sweat or water on the charging port when charging.
- Earbuds' waterproof level is IPX4, do not expose earbuds to dripping or splashing water.
- To avoid hearing damage, do not listen for extended periods at high volume.

11

- Do not turn the volume so high that you are unable to hear your surroundings.
- Do not use earbuds while driving.
- You should use caution or temporarily discontinue use in potentially hazardous situations.
- The product generates stronger permanent magnetic fields that could cause interference with cardiac pacemakers, implanted defibrillators (ICDs) and other implants. Always maintain a distance of at least 3.94"/10 cm between the product component containing the magnet (earbuds and charging case) and the cardiac pacemaker, implanted defibrillator, or other implant.

## FCC Statement

This device complies with Part 15 of the FCC Rules. Operation is subject to the following two conditions: (1) This device may not cause harmful interference, and (2) this device must accept any interference received, including interference that may cause undesired operation.

**Warning:** Changes or modifications not expressly approved by the party responsible for compliance could void the user's authority to operate the equipment.

**Note:** This equipment has been tested and found to comply with the limits for a Class B digital device, pursuant to Part 15 of the FCC Rules. These limits are designed to provide reasonable protection against harmful interference in a residential installation. This equipment generates, uses, and can radiate radio frequency energy and, if not installed and used in accordance with the instructions, may cause harmful interference to radio communications. However, there is no guarantee that interference will not occur in a particular installation. If this equipment does cause harmful interference to radio or television reception, which can be determined by turning the equipment off and on, the user is encouraged to try to correct the interference by one or more of the following measures:

- (1) Reorient or relocate the receiving antenna.
- (2) Increase the separation between the equipment and receiver.
- (3) Connect the equipment into an outlet on a circuit different from that to which the receiver is connected.
- (4) Consult the dealer or an experienced radio / TV technician for help.

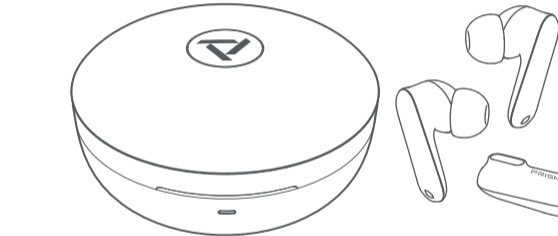
The following importer is the responsible party.

Company Name: PRISM XR PTE, LTD

Address: 60 PAYA LEBAR ROAD #12-03 PAYA LEBAR SQUARE SINGAPORE, 409051

**RF warning statement:**

The device has been evaluated to meet general RF exposure requirement. The device can be used in portable exposure condition without restriction.



## Quick Start Guide

PrismXR Vega T1 P1201

12

## Support

For more information, please visit [www.prismxr.com/pages/support](http://www.prismxr.com/pages/support)

## Download PrismXR App

Download the PrismXR App to enhance your experience (EQ Settings, Dongle Switching, Customize Controls, Firmware Update, and more).



01

## Wearing

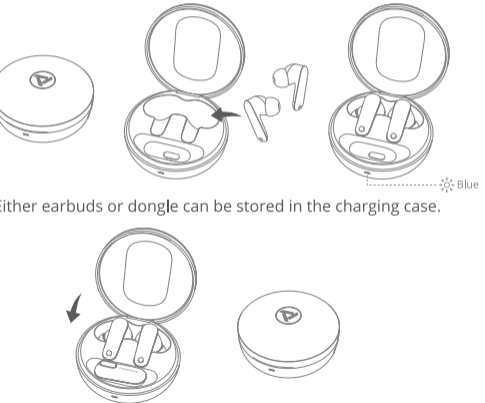
- 3 sizes of ear tips: S/M/L, M is default to be installed on the earbuds.
- Select the ear tips that fit your ear best.



02

## Power On (for your first-time use)

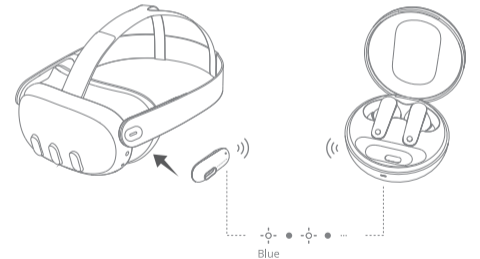
- 1 Open the charging case.
- 2 Place the earbuds into the charging case, and the LED indicator will be blue.
- 3 The earbuds will automatically power on.



03

## Pairing with Dongle

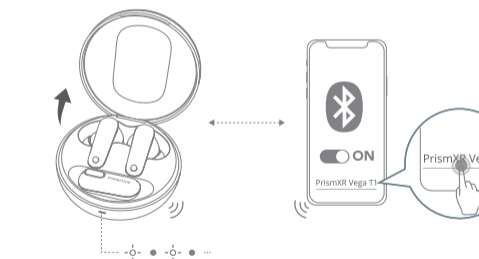
- 1 Open the charging case.
- 2 The earbuds will automatically enter pairing mode, and the LED indicator will flash blue rapidly.
- 3 Turn on the dongle by plugging into the VR headset, its LED indicator will also flash blue rapidly.
- 4 The earbuds will automatically connect with the dongle.



04

## Pairing with Bluetooth Device

- 1 Open the charging case.
- 2 The earbuds will automatically enter Bluetooth pairing mode, and the LED indicator will flash blue rapidly.
- 3 Turn on the Bluetooth in your phone's Settings.
- 4 Select "PrismXR Vega T1" from your device's Bluetooth list to connect.
- 5 The earbuds will connect to the Bluetooth device.



05

## Controls

Note:

- You can customize the controls via PrismXR App.
- Controls may vary when connected via the dongle if the console's system is incompatible.
- Under dual connection, controlling the Bluetooth device takes priority.

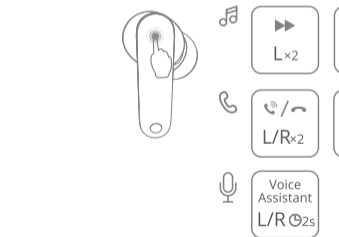
6-1 Left:

Music	Double tap	Next Song
Call	Double tap	Answer/Hang up the call
	Press and hold for 2 seconds	Reject the call
Voice Assistant	Press and hold for 2 seconds	Wake up Voice Assistant

06

6-2 Right:

Music	Double tap	Play/Pause
Call	Double tap	Answer/Hang up the call
	Press and hold for 2 seconds	Reject the call
Voice Assistant	Press and hold for 2 seconds	Wake up Voice Assistant

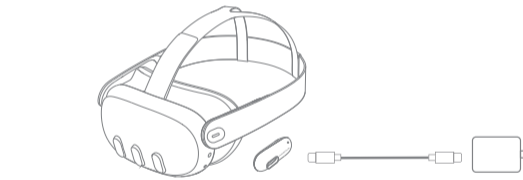


07

## Playing While Charging

Note:

- This device does not support data transmission. Please avoid attempting to connect a PC to your VR headset to stream using a USB-C cable.
- You will need a charger that supports USB Power Delivery (PD). Without it, this function may not work properly.



08