

1

2

3

4

5

6

Remark	Description	Editor	Date

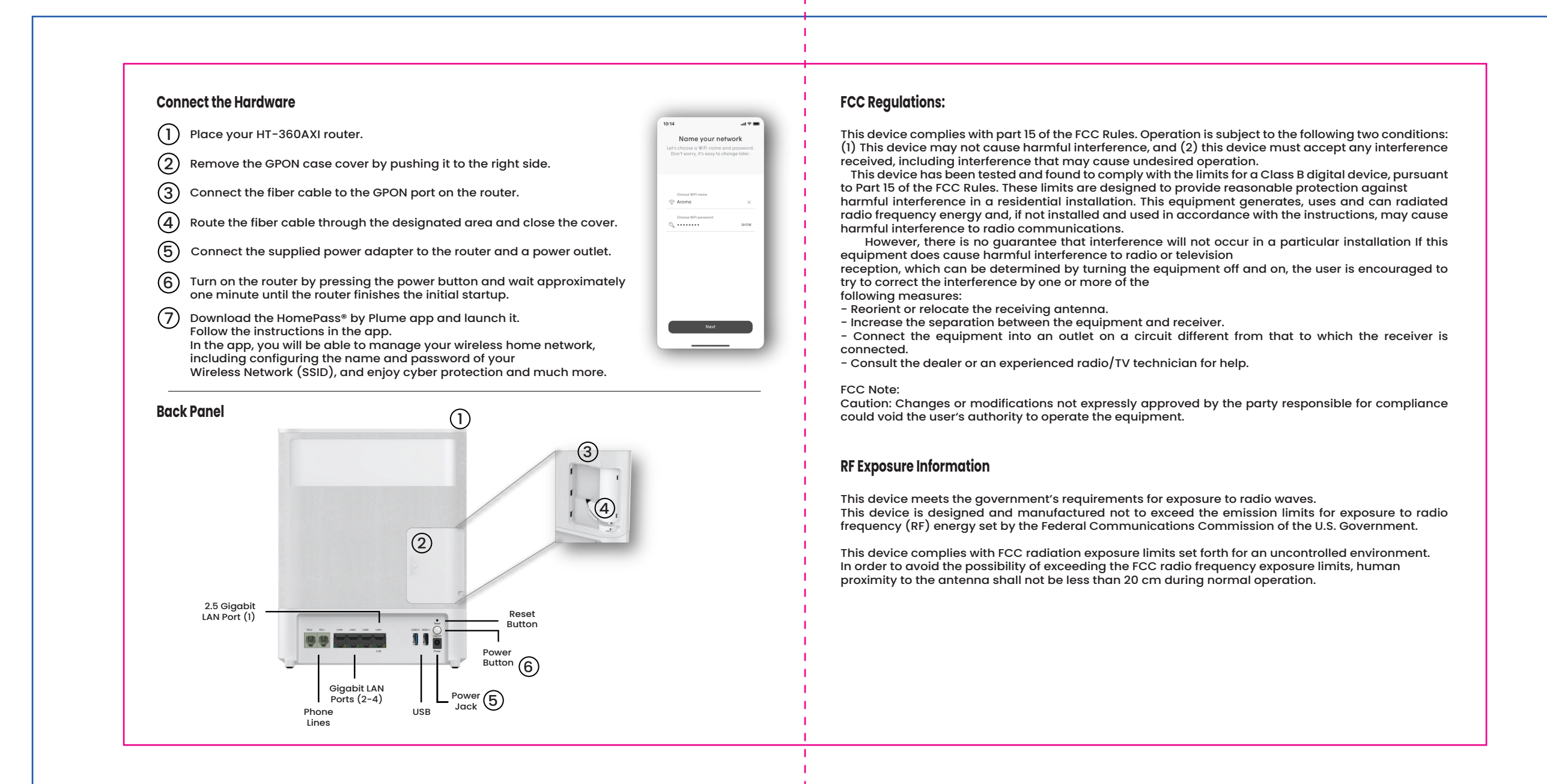
A

A

正面



反面



折痕线, 无需印刷

B

B

C

C

NOTES(技术要求):

- Dimension after folding(折叠后尺寸): 150*150mm
- Print colour(印刷颜色): 4Colour printing (四色印刷).
- Material(材质): 128g copperplate paper(128g 铜版纸).
- Coating(表面处理): Matte lamination (双面耐刮花哑膜)
- Binding process(装订工艺): Paper folding(折页)——对折
- Output lpi(输出网线): 200 lpi.
- Tolerance(公差): L(长)*W(宽): ±1mm.
- Raw materials and the corresponding post processing should meet requirements defined in the T&W Environmental Protection Technical Standards.
(原材料及后处理工艺均能满足我司《环保技术标准》要求).

D

D

DIM	TOL±						CUSTOMER:		T&W 同维 SHENZHEN GONGJIN ELECTRONICS CO., LTD.			
	RANGE	C1	C2	C3	C4		Heights	MODEL:				
	0~6	0.1	0.1	0.15	0.2		HT-880BE		610000013160			
	6~30	0.2	0.3	0.4	0.5		TITLE:	QUICK INSTALLATION GUIDE				
	30~80	0.25	0.5	0.9	1.2	UNIT'S	mm	VER:	V01	DRAW	郭海涛	DATE: 20230810
	80~180	0.3	0.8	1.2	1.5	MAT'L	/	SCALE	N/A	CHECK	赵柳	
	180~315	0.5	1.3	1.8	3	FINISH	/	SHEET	1/1	PDE	N/A	
	315~500	0.7	1.5	2.5	4							
	500~800	0.9	1.8	3	5							
ANG.TOL±	0°~30°/0.1°	30°~60°/0.3°	60°~90°/0.5°									

1

2

3

4

5

6