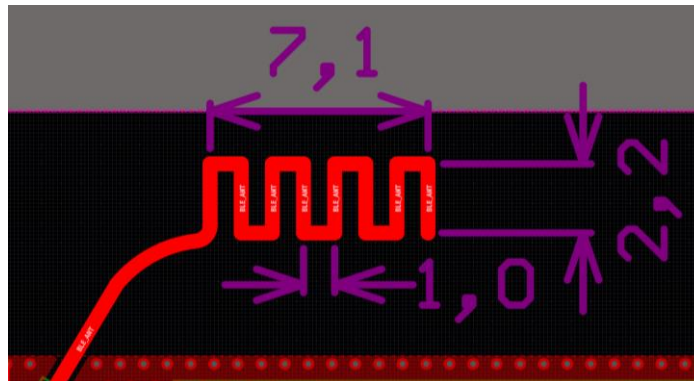
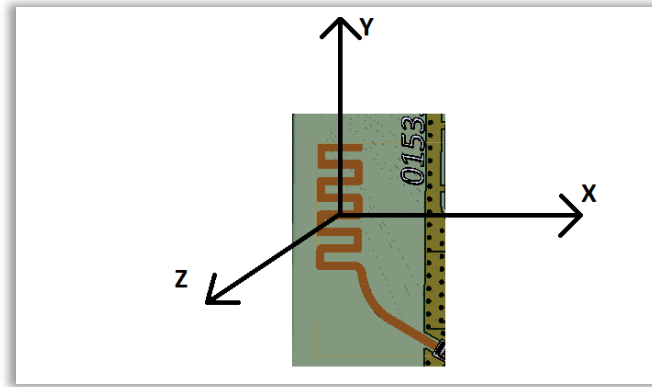


Antenna design and dimensions (mm)



- Type of antenna: printed meander-line monopole antenna
- Frequency range: 2.40 – 2.45 GHz
- Antenna max. gain: 0dBi
- Polarization: horizontal
- Construction: integral (permanent fixed antenna)  
printed directly on main board of the device
- Radiation pattern: 360° radiation patterns in 3 planes are shown on the following pages



Position of the antenna relative to the 3D coordinate system

