

技术要求:

材质: 105g哑粉纸

尺寸: 11*20cm

风琴 折页双面印

印刷要求: 色相正确、印迹牢固、套印准确、各色套印、不露杂色、颜色及专色: Pantone cool gray 11C、



NOTTY Automatic Cat Litter Box User Manual

Model: T-MSP1

Thank you for choosing NOTTY. In order to facilitate proper operation of the machine, please read this manual carefully before use, and store it carefully for future reference. The pictures are for reference only, and the product is subject to the actual product. (Technical specifications in this manual are subject to change)

Product Warranty Card

Name: _____

Address: _____

Tel.No.: _____

Date of Purchase: _____

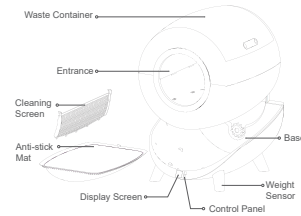
Store Name: _____

Warranty Period: _____

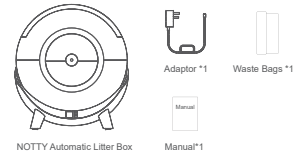
WARRANTY TERMS & CONDITIONS

- All quality-related defects on items sold directly by NOTTY or NOTTY's authorized resellers are covered by an extensive warranty, starting from the date of purchase. NOTTY's limited warranty is restricted to the country of purchase. The limited warranty is void on items taken outside the country they were originally bought in or shipped to directly from an authorized online purchase.
- This warranty covers only original NOTTY products. It is not applicable to normal wear and tear, or any defects arising from damage caused by misuse of this product.
- Warranty is for the primary product only. Any free additional product(s) are not covered in this warranty.
- If the product fails regardless of usage in compliance with the user manual and other written precaution, replacement will be provided free of charge.
- To claim the warranty, contact the services team from the platform or store where you bought from.

Components



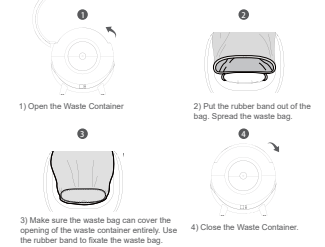
Packaging List



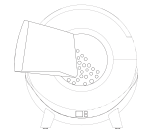
Setting Up Your NOTTY Automatic Cat Litter Box

- Placement**
 - Place your NOTTY Automatic Cat Litter Box on a firm, level floor; be careful not to push it against the wall.
 - Reserve ample space when opening the waste container on the top and left side to ensure the normal use of the product.
 - The gear behind the cylinder should be embedded in the groove to ensure the normal use of the product.
 - Do not place any items on top of the device for safety reasons.
 - Do not drag the device during the placement process. Lift the cylinder first, then move the base to relocate the device.
- Power on**
 - Plug the small end of the adaptor into the socket at the back of the base. Then plug the other end into a power outlet. The LED screen on the front of the device will light up.
- Self-inspection**
 - The device will perform a self-inspection that will last about 1min. During the self-inspection, the LED screen shows "reset", and the cylinder will rotate slowly until it gets to the HOME position.
 - After the self-inspection is completed, the screen will jump to the default display, "0 toilet visits today".
 - The default mode is automatic mode; you can adjust the cleaning mode on the APP.

4. Install Waste Bags



- 5. Add cat litter**
 - Fill the cylinder through the opening with cat litter.
 - This device is compatible with cat litters that clump (for example, tofu cat litter, moved cat litter and bentonite cat litter). We recommend using "NOTTY long-lasting deodorizing cat litter", which is more economical and deodorizes better.
 - Check the MAX line and ensure not to overfill the cylinder (no more than 5L).
 - It is recommended that the amount of cat litter added is no less than 4L, which can effectively avoid the sticky bottom of the cat litter.
 - It is recommended to wait for 2 minutes after adding cat litter and run the smoothing cat litter function through the function button on, which can also be controlled through the APP.



Clean and Care

- Empty Cat Litter**
 - Use Empty MODE to empty all litter into the waste container. Throw the dirty bag away.
- Easy disassembly**
 - Turn the device off. With two hands, lift the cylinder and carefully set it aside.
- Cleaning**
 - Clean the Cylinder with water. There are no electronic components in the Cylinder.
 - Do not wash the base. You can wipe it with a mop or towel to clean it. Let the Cylinder dry completely before reassembling it to the Base and power it on. Cleaning frequency recommendation:
 - The capacity of the waste container is 14L, good for 15-day without cleaning (one cat).
 - We recommend changing the waste bag every 5 days.
 - We recommend cleaning the inside of the Cylinder every 1-3 months.

App Download and Operation

- 1. Download the APP**
 - The smart litter box can be remotely controlled through the App. Download and install the latest version of the NOTTY Smart Pet app from the App Store or other third-party app stores.
- 2. Pair with the device**
 - Open the APP; turn to "devices" page and click the "FUNCTION" button on the top right corner of the screen. Press the "FUNCTION" button on the control panel until the screen displays WIFI. Press "OK" twice and follow the instructions in the app to complete the pairing with the device.



- 3. Pair the smart collar through the APP**
 - Turn to my cat/page and click the "FUNCTION" button on top right corner of the screen. Fill in the pet information according to the instructions.
 - [Register the smart collar]: Take out the chip from the collar tag. Scan the QR code on the chip or enter the collar number to complete the registration.
 - [Pair the smart collar with the device]: Add NOTTY Smart Litter Box to the paired devices list. Put the chip back into the collar tag.



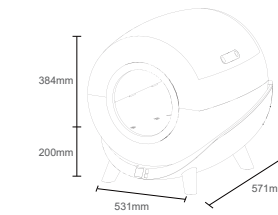
Cleaning Mode

Mode	Description
Automatic MODE	After your cat leaves the Cylinder, NOTTY Automatic Cat Litter Box automatically performs a Cleaning cycle. You may set this mode through APP.
Timer MODE	NOTTY Automatic Cat Litter Box will automatically perform a Clean cycle all the time you set. You may set this mode through APP.
Smart MODE	This MODE is designed for cats that tends to have soft poop. NOTTY Automatic Cat Litter Box will help bury and cover the poop with cat litter and start the Clean cycle after 10 minutes. You may set this mode through APP.
Clean it Now	NOTTY Automatic Cat Litter Box will perform a Clean cycle immediately. You can do it through Control Panel or through APP.
Smooth Cat Litter	NOTTY Automatic Cat Litter Box will rotate 1/4 cycle right and left to help smooth rusty cat litter. You can do it through Control Panel or through APP.
Empty MODE	NOTTY Automatic Cat Litter Box will empty all of the litter from the Cylinder into the Waste Container for easy disposal. Use this MODE to change out the whole bed of litter or before cleaning the cylinder. You can do it through Control Panel or through APP.

Control Panel

Function	How It works	Description
Clean it Now	Keep pressing the MODE button until the screen displays "Clean it Now". Press OK button.	NOTTY Automatic Cat Litter Box will perform a Clean cycle immediately.
Smooth Cat Litter	Keep pressing the MODE button until the screen displays "Smooth Cat Litter". Press OK button.	NOTTY Automatic Cat Litter Box will rotate 1/4 cycle right and left to help smooth rusty cat litter.
Empty MODE	Keep pressing the MODE button until the screen displays "Empty MODE". Press OK button.	NOTTY Automatic Cat Litter Box will empty all of the litter from the Cylinder into the Waste Container for easy disposal.
Reset	Keep pressing the MODE button until the screen displays "Reset". Press OK button.	NOTTY Automatic Cat Litter Box will reset the weight sensor. After ending litter, press reset button to reset the Cat sensor.
WIFI	Keep pressing the MODE button until the screen displays "WIFI". Press OK button twice.	NOTTY Automatic Cat Litter Box will be ready to connect. Go to NOTTY Smart Pet App to complete the pairing.

Product Parameters



Product Name: NOTTY Automatic Cat Litter Box
Product Model: T-MSP1
Overall Dimension: 531mm * 584mm * 571mm
Rated Voltage: 5V=1A
Rated Power: 5W
Applicable for Cats
Made in P.R.C.



NOTE

This equipment has been tested and found to comply with the limits for a Class B digital device, pursuant to Part 15 of FCC Rules. These limits are designed to provide reasonable protection against harmful interference in a residential installation. This equipment generates uses and can radiate radio frequency energy and, if not installed and used in accordance with the instructions, may cause harmful interference to radio communications. However, there is no guarantee that interference will not occur in a particular installation. If this equipment does cause harmful interference to radio or television reception, which can be determined by turning the equipment off and on the user is encouraged to try to correct the interference by one or more of the following measures:

- Reorient or relocate the receiving antenna.
- Increase the separation between the equipment and receiver.
- Connect the equipment into an outlet on a circuit different from that to which the receiver is connected.
- Consult the dealer of experienced technician for help.

Any changes or modifications not expressly approved by the party responsible for compliance could void the user's authority to operate the equipment.

Note: The manufacturer is not responsible for any radio or TV interference caused by unauthorized modifications to this equipment. Such modifications could void the user's authority to operate the equipment.

The device complies with part 15 of the FCC Rules. Operation is subject to the following two conditions: (1) This device may not cause interferences and (2) This device must accept any interference received, including interference that may cause undesired operation.

This equipment should be installed and operated with minimum distance 20cm between the radiator/your body.