

<b>Prüfbericht-Nr.:</b> Test report no.:	<b>CN24V45K 003</b>	<b>Auftrags-Nr.:</b> Order no.:	168505519	<b>Page 1 of 26</b> Seite 1 von 26
<b>Kunden-Referenz-Nr.:</b> Client reference no.:	N/A	<b>Auftragsdatum:</b> Order date:	2024-09-24	
<b>Auftraggeber:</b> Client:	<b>SHOKZ (SINGAPORE) PTE. LTD.</b> 11 NORTH BUONA VISTA DRIVE #16-09 THE METROPOLIS, SINGAPORE 138589, Singapore			
<b>Prüfgegenstand:</b> Test item:	OPENFIT 2			
<b>Bezeichnung / Typ-Nr.:</b> Identification / Type no.:	SHOKZ T920 (Trademark: SHOKZ)			
<b>Auftrags-Inhalt:</b> Order content:	SAR Test Rpoert			
<b>Prüfgrundlage:</b> Test specification:	FCC 47 CFR § 2.1093 IEEE Std 1528-2013 RSS-102 Issue 6 December 2023 IEC/62209-1528: 2020 Published RF exposure KDB procedures			
<b>Wareneingangsdatum:</b> Date of sample receipt:	2024-09-25	Refer to photos document		
<b>Prüfmuster-Nr.:</b> Test sample no.:	A003825629-015 A003825629-015			
<b>Prüfzeitraum:</b> Testing period:	2024-09-28 –2024-09-29			
<b>Ort der Prüfung:</b> Place of testing:	TÜV Rheinland (Shenzhen) Co., Ltd.			
<b>Prüflaboratorium:</b> Testing laboratory:	TÜV Rheinland (Shenzhen) Co., Ltd.			
<b>Prüfergebnis*:</b> Test result*:	Pass			
<b>geprüft von:</b> tested by:	<u>X Bell Hu</u>	<b>genehmigt von:</b> authorized by:	<u>X Lin Lin</u>	
<b>Datum:</b> Date:	2024-11-04 <small>Signed by: Bell Hu</small>	<b>Ausstellungsdatum:</b> Issue date:	2024-11-04: <small>Signed by: Lin Lin</small>	
<b>Stellung / Position:</b>	Sachverständige(r)/Expert	<b>Stellung / Position:</b>	Sachverständige(r)/Expert	
<b>Sonstiges /</b> Other:	FCC ID: 2BCD6-T920 IC: 31129-T920 HVIN: SHOKZ T920, PMN: OPENFIT 2			
<b>Zustand des Prüfgegenstandes bei Anlieferung:</b> Condition of the test item at delivery:	Prüfmuster vollständig und unbeschädigt Test item complete and undamaged			
<small>* Legende:</small>	<small>P(ass) = entspricht o.g. Prüfgrundlage(n)</small>	<small>F(ail) = entspricht nicht o.g. Prüfgrundlage(n)</small>	<small>N/A = nicht anwendbar</small>	<small>N/T = nicht getestet</small>
<small>* Legend:</small>	<small>P(ass) = passed a.m. test specification(s)</small>	<small>F(ail) = failed a.m. test specification(s)</small>	<small>N/A = not applicable</small>	<small>N/T = not tested</small>
<b>Dieser Prüfbericht bezieht sich nur auf das o.g. Prüfmuster und darf ohne Genehmigung der Prüfstelle nicht auszugsweise vervielfältigt werden. Dieser Bericht berechtigt nicht zur Verwendung eines Prüfzeichens.</b> <i>This test report only relates to the above mentioned test sample. Without permission of the test center this test report is not permitted to be duplicated in extracts. This test report does not entitle to carry any test mark.</i>				

v05

Prüfbericht-Nr.: CN24V45K 003  
Test report no.:

Page 2 of 26  
Seite 2 von 26

**Remarks**  
*Anmerkungen*

1	<p>The equipment used during the specified testing period was calibrated according to our test laboratory calibration program. The equipment fulfils the requirements included in the relevant standards. The traceability of the test equipment used is ensured by compliance with the regulations of our management system.</p> <p>Detailed information regarding test conditions, equipment and measurement uncertainty is available in the test laboratory and could be provided on request.</p> <p><i>Alle eingesetzten Prüfmittel waren zum angegebenen Prüfzeitraum gemäß eines festgelegten Kalibrierungsprogramms unseres Prüfhauses kalibriert. Sie entsprechen den in den Prüfprogrammen hinterlegten Anforderungen. Die Rückverfolgbarkeit der eingesetzten Prüfmittel ist durch die Einhaltung der Regelungen unseres Managementsystems gegeben.</i></p> <p><i>Detaillierte Informationen bezüglich Prüfkonditionen, Prüfequipment und Messunsicherheiten sind im Prüflabor vorhanden und können auf Wunsch bereitgestellt werden.</i></p>
2	<p>As contractually agreed, this document has been signed digitally only. TÜV Rheinland has not verified and unable to verify which legal or other pertaining requirements are applicable for this document. Such verification is within the responsibility of the user of this document. Upon request by its client, TÜV Rheinland can confirm the validity of the digital signature by a separate document. Such request shall be addressed to our Sales department. An environmental fee for such additional service will be charged.</p> <p><i>Wie vertraglich vereinbart, wurde dieses Dokument nur digital unterzeichnet. Der TÜV Rheinland hat nicht überprüft, welche rechtlichen oder sonstigen diesbezüglichen Anforderungen für dieses Dokument gelten. Diese Überprüfung liegt in der Verantwortung des Benutzers dieses Dokuments. Auf Verlangen des Kunden kann der TÜV Rheinland die Gültigkeit der digitalen Signatur durch ein gesondertes Dokument bestätigen. Diese Anfrage ist an unseren Vertrieb zu richten. Eine Umweltgebühr für einen solchen zusätzlichen Service wird erhoben.</i></p>
3	<p>Test clauses with remark of * are subcontracted to qualified subcontractors and described under the respective test clause in the report. Deviations of testing specification(s) or customer requirements are listed in specific test clause in the report.</p> <p><i>Prüfklausel mit der Note * wurden an qualifizierte Unterauftragnehmer vergeben und sind unter der jeweiligen Prüfklausel des Berichts beschrieben. Abweichungen von Prüfspezifikation(en) oder Kundenanforderungen sind in der jeweiligen Prüfklausel im Bericht aufgeführt.</i></p>
4	<p>The decision rule for statements of conformity, based on numerical measurement results, in this test report is based on the "Zero Guard Band Rule" and "Simple Acceptance" in accordance with ILAC G8:2019 and IEC Guide 115:2021, unless otherwise specified in the applied standard mentioned on Page 1 of this report or requested by the customer. This means that measurement uncertainty is not taken in account and hence also not declared in the test report. For additional information to the resulting risk based of this decision rule please refer to ILAC G8:2019.</p> <p><i>Die Entscheidungsregel für Konformitätserklärungen basierend auf numerischen Messergebnissen in diesem Prüfbericht basiert auf der "Null-Grenzwert-Regel" und der "Einfachen Akzeptanz" gemäß ILAC G8:2019 und IEC Guide 115:2021, es sei denn, in der auf Seite 1 dieses Berichts genannten angewandten Norm ist etwas anderes festgelegt oder vom Kunden gewünscht. Dies bedeutet, dass die Messunsicherheit nicht berücksichtigt wird und daher auch nicht im Prüfbericht angegeben wird. Zu weiteren Informationen bezüglich des Risikos durch diese Entscheidungsregel siehe ILAC G8:2019.</i></p>

## Table of Contents

<b>1.</b>	<b>GENERAL INFORMATION .....</b>	<b>5</b>
<b>1.1.</b>	<b>STATEMENT OF COMPLIANCE .....</b>	<b>5</b>
<b>1.2.</b>	<b>EQUIPMENT UNDER TEST (EUT) INFORMATION .....</b>	<b>6</b>
1.2.1.	<i>General Information .....</i>	6
<b>2.</b>	<b>TEST SITES.....</b>	<b>7</b>
<b>2.1.</b>	<b>TEST FACILITIES .....</b>	<b>7</b>
<b>2.2.</b>	<b>AMBIENT CONDITION.....</b>	<b>7</b>
<b>2.3.</b>	<b>LIST OF TEST AND MEASUREMENT INSTRUMENTS .....</b>	<b>8</b>
<b>3.</b>	<b>MEASUREMENT UNCERTAINTY.....</b>	<b>9</b>
<b>4.</b>	<b>TEST SPECIFICATION, METHODS AND PROCEDURES .....</b>	<b>10</b>
<b>5.</b>	<b>SAR MEASUREMENT SYSTEM .....</b>	<b>11</b>
<b>5.1.</b>	<b>DEFINITION OF SPECIFIC ABSORPTION RATE (SAR) .....</b>	<b>11</b>
<b>5.2.</b>	<b>SPEAG DASY SYSTEM .....</b>	<b>11</b>
5.2.1.	<i>Robot.....</i>	12
5.2.2.	<i>Probes.....</i>	13
5.2.3.	<i>Data Acquisition Electronics (DAE).....</i>	13
5.2.4.	<i>Phantoms .....</i>	14
5.2.5.	<i>Device Holder.....</i>	15
5.2.6.	<i>System Validation Dipoles .....</i>	15
5.2.7.	<i>Tissue Simulating Liquids .....</i>	16
5.2.8.	<i>SAR System Verification .....</i>	18
<b>6.</b>	<b>SAR MEASUREMENT PROCEDURE.....</b>	<b>19</b>
<b>6.1.</b>	<b>AREA &amp; ZOOM SCAN PROCEDURE.....</b>	<b>19</b>
<b>6.2.</b>	<b>VOLUME SCAN PROCEDURE .....</b>	<b>19</b>
<b>6.3.</b>	<b>POWER DRIFT MONITORING.....</b>	<b>20</b>
<b>6.4.</b>	<b>SPATIAL PEAK SAR EVALUATION .....</b>	<b>20</b>
<b>6.5.</b>	<b>SAR AVERAGED METHODS .....</b>	<b>20</b>
<b>7.</b>	<b>SAR MEASUREMENT EVALUATION .....</b>	<b>21</b>
<b>7.1.</b>	<b>EUT CONFIGURATION AND SETTING .....</b>	<b>21</b>
<b>7.2.</b>	<b>EUT TESTING POSITION .....</b>	<b>22</b>
7.2.1.	<i>Head Exposure Conditions .....</i>	22
<b>7.3.</b>	<b>TISSUE VERIFICATION .....</b>	<b>22</b>
<b>7.4.</b>	<b>SYSTEM VALIDATION.....</b>	<b>22</b>
<b>7.5.</b>	<b>SYSTEM VERIFICATION .....</b>	<b>22</b>
<b>8.</b>	<b>MAXIMUM OUTPUT POWER.....</b>	<b>23</b>
<b>8.1.</b>	<b>MEASURED CONDUCTED POWER RESULT .....</b>	<b>23</b>
<b>8.2.</b>	<b>SAR TESTING RESULTS.....</b>	<b>24</b>

8.2.1.	SAR Test Reduction Considerations.....	24
8.2.2.	SAR Results for Head Exposure Condition (Separation Distance is 0 cm Gap).....	24
	SAR Measurement Variability.....	25

<b>APPENDIXES .....</b>	<b>26</b>
-------------------------	-----------

**Appendix A: SAR Plots of System Verification**

**Appendix B: SAR Plots of SAR Measurement**

**Appendix C: Calibration Certificate for probe and Dipole**

**Appendix D: Photographs of EUT and setup**

## 1. General Information

### 1.1. Statement of Compliance

The maximum results of Specific Absorption Rate (SAR) found during testing for the EUT are as follows:

Mode	Sample	Highest Reported Head SAR <sub>1g</sub> (0 cm Gap) (W/kg)
Bluetooth	Left	0.92
	Right	1.02

**Note:**

This device is in compliance with Specific Absorption Rate (SAR) for general population/uncontrolled exposure limits (1.6W/kg as averaged over any 1 gram of tissue; 10-gram SAR for Product Specific 10g SAR, limit: 4.0W/kg) specified in FCC 47 CFR part 2 (2.1093) and ANSI/IEEE C95.1-1992/ IC RSS-102 Issue 5:2015, and had been tested in accordance with the measurement methods and procedures specified in IEEE 1528-2013 and FCC KDB publications.

## 1.2. Equipment Under Test (EUT) Information

### 1.2.1. General Information

The EUTs are True Wireless Stereo Earbuds, which consist of a left earbud, a right earbud and a charging box, the left & right earbuds support Bluetooth dual mode wireless technology.

**Table 3: Technical Specification of EUT**

General Information of EUT	Value
Kind of Equipment:	OPENFIT 2
Type Designation:	SHOKZ T920
Trademark:	SHOKZ
FCC ID:	2BCD6-T920
IC:	31129-T920
HVIN:	SHOKZ T920
PMN:	OPENFIT 2
Operating Voltage (for earbuds):	Internal battery operated (3.85Vdc)
Operating Temperature Range:	0 °C ~ +40 °C
Technical Specification of Bluetooth (dual mode)	
Operating Frequency:	2402 MHz to 2480 MHz
Type of Modulation:	GFSK, $\pi/4$ -DQPSK, 8DPSK
Channel Number:	BR & EDR mode:79 channels, Low Energy mode:40 channels
Channel Separation:	BR & EDR mode:1MHz, Low Energy mode:2MHz
Data Rate:	BR & EDR mode: 1Mbps, 2Mbps, 3Mbps Low Energy mode: 1Mbps, 2Mbps
Antenna Type:	Integral Antenna
Antenna Gain:	-3.6 dBi (Provided by the Client)

**Note:**

1. The above EUT information is declared by manufacturer and for more detailed features description please refers to the manufacturer's specifications or User's Manual.

## 2. Test Sites

### 2.1. Test Facilities

**TÜV Rheinland (Shenzhen) Co., Ltd.**

No.362, Huanguan Middle Road, Songyuansha Community, Guanhu Subdistrict, Longhua District, Shenzhen, Guangdong, China/518110

A2LA Cert. No.: 5162.01

FCC Registration No.: 694916

IC Registration No.: 25069

CAB identifier: CN0078.

### 2.2. Ambient Condition

Ambient Temperature	22.8°C
Relative Humidity	42%

**2.3. List of Test and Measurement Instruments**

Equipment	Manufacturer	Model	SN	Cal. Date	Cal. Interval
System Validation Dipole	SPEAG	D2450V2	1014	Jun. 06, 2024	3 years
Dosimetric E-Field Probe	SPEAG	EX3DV4	7738	Dec. 13, 2023	1 year
Data Acquisition Electronics	SPEAG	DAE4	1725	Oct. 26, 2023	1 year
Signal Analyzer	R&S	FSV 7	103665	Jul. 22, 2024	1 year
Vector Network Analyzer	R&S	ZNB 8	107040	Jul. 22, 2024	1 year
Signal Generator	R&S	SMB 100A	180840	Jul. 22, 2024	1 year
EPM Series Power Meter	Keysight	N1914A	MY58240005	Nov. 14, 2023	1 year
Power Sensor	Keysight	N8481H	MY58250002	Nov. 14, 2023	1 year
Power Sensor	Keysight	N8481H	MY58250006	Nov. 14, 2023	1 year
DC Power Supply	Topward	3303D	809332	Nov. 14, 2023	1 year
Coaxial Directional Couper	Keysight	773D	MY52180552	Nov. 14, 2023	1 year
Coaxial Directional Couper	shhuaxiang	DTO-0.4/3.9-10	18052101	Nov. 14, 2023	1 year
Coaxial attenuator	Keysight	8491A	MY52463219	Nov. 14, 2023	1 year
Coaxial attenuator	Keysight	8491A	MY52463210	Nov. 14, 2023	1 year
Coaxial attenuator	Keysight	8491A	MY52463222	Nov. 14, 2023	1 year
Digital Thermometer	LKM	DTM3000	3116	Nov. 14, 2023	1 year
Power Amplifier Mini circuit	mini-circuits	ZHL-42W	SN002101809	N/A	N/A
Power Amplifier Mini circuit	mini-circuits	ZVE-8G	SN070501814	N/A	N/A
PHANTOM	SPEAG	ELI V8.0	2094	N/A	N/A



### 3. Measurement Uncertainty

Source of Uncertainty	Tolerance (± %)	Probability Distribution	Divisor	Ci (1g)	Ci (10g)	Standard Uncertainty (1g)	Standard Uncertainty (10g)	Vi Veff
<b>Measurement System Errors</b>								
Probe Calibration	±13.3%	Normal (k=2)	2	1	1	± 6.65 %	± 6.65 %	∞
Probe Calibration Drift	±1.7%	Rectangular	√3	1	1	±1.0%	±1.0%	∞
Probe Linearity	±4.7%	Rectangular	√3	1	1	±2.7%	±2.7%	∞
Broadband Signal	±3.0%	Rectangular	√3	1	1	±1.7%	±1.7%	∞
Probe Isotropy	±7.6%	Rectangular	√3	1	1	±4.4%	±4.4%	∞
Other Probe + Electronic	±0.7%	Normal	1	1	1	±0.7%	±0.7%	∞
RF Ambient	±1.8%	Normal	1	1	1	±1.8%	±1.8%	∞
Probe Positioning	±0.006mm	Normal	1	0.14	0.14	±0.10%	±0.10%	∞
Data Processing	±1.2%	Normal	1	1	1	±1.2%	±1.2%	∞
<b>Phantom and Device Errors</b>								
Conductivity (meas. DAK)	±2.5%	Normal	1	0.78	0.71	±2.0%	±1.8%	100
Conductivity (temp.) <sup>BB</sup>	±3.3%	Rectangular	√3	0.78	0.71	±1.5%	±1.4%	∞
Phantom Permittivity	±14.0%	Rectangular	√3	0	0	±0%	±0%	∞
Distance DUT – TSL	±2.0%	Normal	1	2	2	±4.0%	±4.0%	∞
Device Positioning	±2.4%/±2.8%	Normal	1	1	1	±2.8%	±2.8%	30
Device Holder	±3.4%/±3.5%	Normal	1	1	1	±3.5%	±3.5%	30
DUT Modulation <sup>m</sup>	±2.4%	Rectangular	√3	1	1	±1.4%	±1.4%	∞
Time-average SAR	±1.7%	Rectangular	√3	1	1	±1.0%	±1.0%	∞
DUT drift	±2.5%	Normal	1	1	1	±2.5%	±2.5%	30
Val Antenna Unc. <sup>val</sup>	±0.0%	Normal	1	1	1	±0%	±0%	
Unc. Input Power <sup>val</sup>	±0.0%	Normal	1	1	1	±0%	±0%	
<b>Correction to the SAR results</b>								
C(ε,σ)	±1.9%	Normal	1	1	0.84	±1.9%	±1.6%	
SAR scaling <sup>p</sup>	±0.0%	Rectangular	√3	1	1	±0%	±0%	
<b>Combined Standard Uncertainty (K = 1)</b>						±12.54%	±12.44%	
<b>Expanded Uncertainty (K = 2)</b>						±25.1%	±24.9%	

**Uncertainty budget for frequency range 300 MHz to 3 GHz**

#### 4. Test Specification, Methods and Procedures

The tests documented in this report were performed in accordance with FCC 47 CFR § 2.1093, IEEE STD 1528- 2013, the following FCC Published RF exposure KDB procedures & manufacturer KDB inquiries:

- KDB 865664 D01 SAR Measurement 100 MHz to 6 GHz v01r04
- KDB 865664 D02 RF Exposure Reporting v01r02
- KDB 447498 D01 General RF Exposure Guidance v06
- KDB 447498 D04 Interim General RF Exposure Guidance v01
- IC RSS-102 Issue 6 December 2023
- IEC/IEEE 62209-1528:2020 Measurement procedure for the assessment of specific absorption rate of human exposure to radio frequency fields from hand-held and body-mounted wireless communication devices - Part 1528: Human models, instrumentation, and procedures (Frequency range of 4 MHz to 10 GHz)

In addition to the above, the following information was used:

- [TCB workshop](#) April, 2019; Page 19, Tissue Simulating Liquids(TSL)

## 5. SAR Measurement System

### 5.1. Definition of Specific Absorption Rate (SAR)

SAR is related to the rate at which energy is absorbed per unit mass in an object exposed to a radio field. The SAR distribution in a biological body is complicated and is usually carried out by experimental techniques or numerical modeling. The standard recommends limits for two tiers of groups, occupational/controlled and general population/uncontrolled, based on a person's awareness and ability to exercise control over his or her exposure. In general, occupational/controlled exposure limits are higher than the limits for general population/uncontrolled.

The SAR definition is the time derivative (rate) of the incremental energy (dW) absorbed by (dissipated in) an incremental mass (dm) contained in a volume element (dv) of a given density ( $\rho$ ). The equation description is as below:

$$\text{SAR} = \frac{d}{dt} \left( \frac{dW}{dm} \right) = \frac{d}{dt} \left( \frac{dW}{\rho dv} \right)$$

SAR is expressed in units of Watts per kilogram (W/kg)

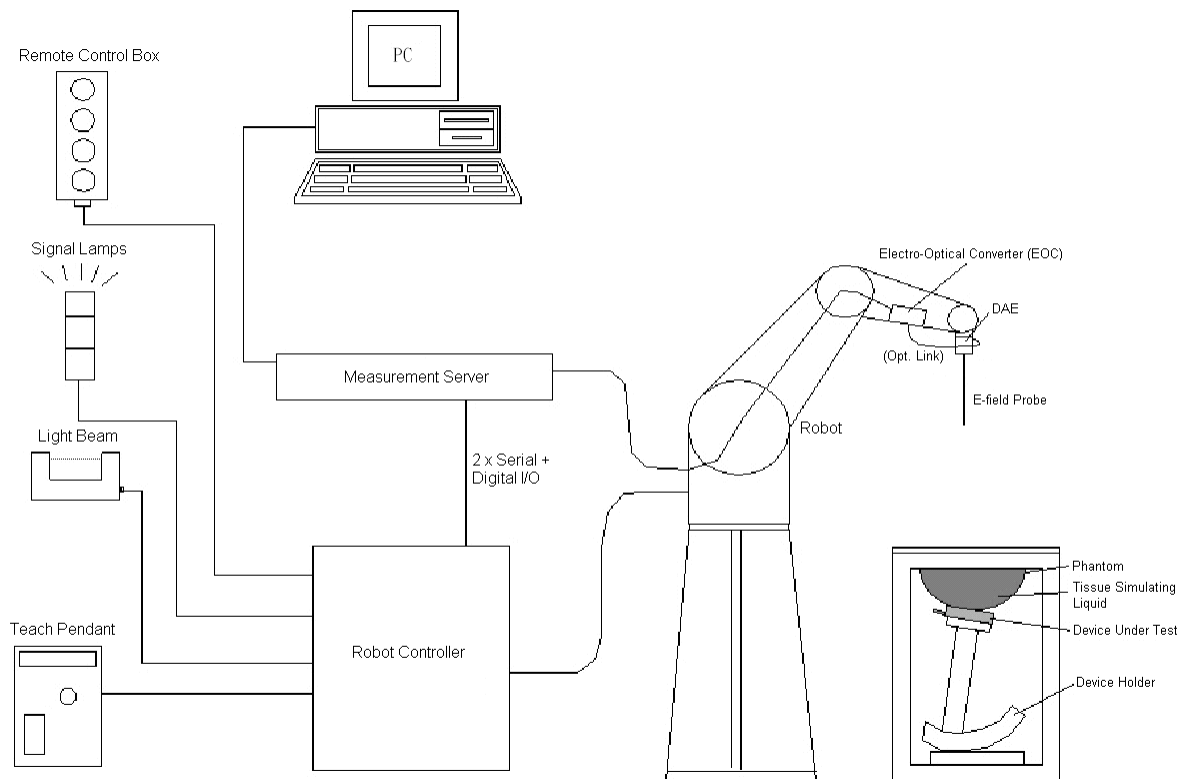
SAR measurement can be related to the electrical field in the tissue by

$$\text{SAR} = \frac{\sigma |E|^2}{\rho}$$

Where:  $\sigma$  is the conductivity of the tissue,  $\rho$  is the mass density of the tissue and E is the RMS electrical field strength.

### 5.2. SPEAG DASY System

DASY system consists of high precision robot, probe alignment sensor, phantom, robot controller, controlled measurement server and near-field probe. The robot includes six axes that can move to the precision position of the DASY5 software defined. The DASY software can define the area that is detected by the probe. The robot is connected to controlled box. Controlled measurement server is connected to the controlled robot box. The DAE includes amplifier, signal multiplexing, AD converter, offset measurement and surface detection. It is connected to the Electro-optical coupler (ECO). The ECO performs the conversion from the optical into digital electric signal of the DAE and transfers data to the PC.

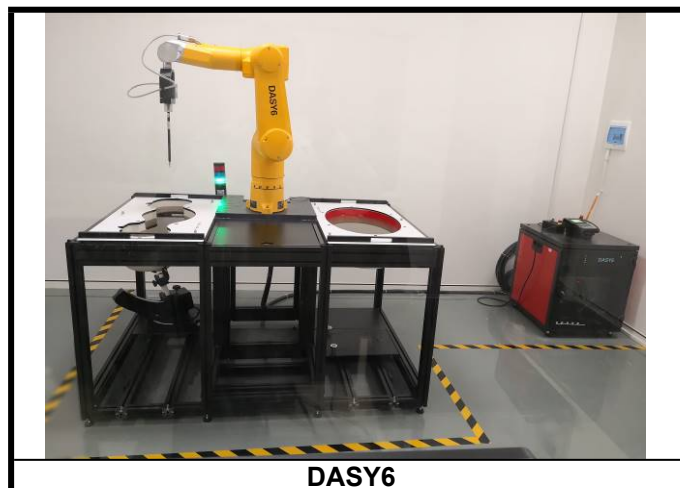


### DASY System Setup

#### 5.2.1. Robot

The DASY system uses the high precision robots from Stäubli SA (France). For the 6-axis controller system, the robot controller version (DASY5: CS8c) from Stäubli is used. The Stäubli robot series have many features that are important for our application:

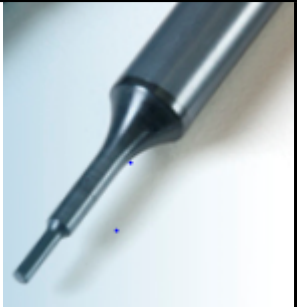
- High precision (repeatability  $\pm 0.035$  mm)
- High reliability (industrial design)
- Jerk-free straight movements
- Low ELF interference (the closed metallic construction shields against motor control fields)




**DASY6**

**5.2.2. Probes**


The SAR measurement is conducted with the dosimetric probe. The probe is specially designed and calibrated for use in liquid with high permittivity. The dosimetric probe has special calibration in liquid at different frequency.


<b>Model</b>	EX3DV4	
<b>Construction</b>	Symmetrical design with triangular core. Built-in shielding against static charges. PEEK enclosure material (resistant to organic solvents, e.g., DGBE).	
<b>Frequency</b>	10 MHz to 6 GHz Linearity: $\pm 0.2$ dB	
<b>Directivity</b>	$\pm 0.3$ dB in HSL (rotation around probe axis) $\pm 0.5$ dB in tissue material (rotation normal to probe axis)	
<b>Dynamic Range</b>	10 $\mu$ W/g to 100 mW/g Linearity: $\pm 0.2$ dB (noise: typically $< 1$ $\mu$ W/g)	
<b>Dimensions</b>	Overall length: 337 mm (Tip: 20 mm) Tip diameter: 2.5 mm (Body: 12 mm) Typical distance from probe tip to dipole centers: 1 mm	

**5.2.3. Data Acquisition Electronics (DAE)**


<b>Model</b>	DAE4	
<b>Construction</b>	Signal amplifier, multiplexer, A/D converter and control logic. Serial optical link for communication with DASY embedded system (fully remote controlled). Two step probe touch detector for mechanical surface detection and emergency robot stop.	
<b>Measurement Range</b>	-100 to +300 mV (16 bit resolution and two range settings: 4mV, 400mV)	
<b>Input Offset Voltage</b>	$< 5\mu$ V (with auto zero)	
<b>Input Bias Current</b>	$< 50$ fA	
<b>Dimensions</b>	60 x 60 x 68 mm	

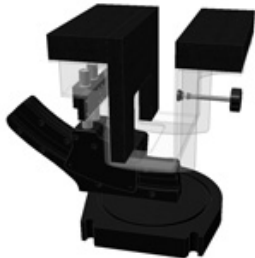
**5.2.4. Phantoms**

<b>Model</b>	Twin SAM	
<b>Construction</b>	The shell corresponds to the specifications of the Specific Anthropomorphic Mannequin (SAM) phantom defined in IEC/IEEE 62209-1528. It enables the dosimetric evaluation of left and right hand phone usage as well as body-mounted usage at the flat phantom region. A cover prevents evaporation of the liquid. Reference markings on the phantom allow the complete setup of all predefined phantom positions and measurement grids by teaching three points with the robot.	
<b>Material</b>	Vinylester, glass fiber reinforced (VE-GF)	
<b>Shell Thickness</b>	$2 \pm 0.2$ mm ( $6 \pm 0.2$ mm at ear point)	
<b>Dimensions</b>	Length: 1000 mm Width: 500 mm Height: adjustable feet	
<b>Filling Volume</b>	approx. 25 liters	


<b>Model</b>	ELI	
<b>Construction</b>	The ELI phantom is used for compliance testing of handheld and body-mounted wireless devices in the frequency range of 4 MHz to 10 GHz. ELI is fully compatible with the IEC/IEEE 62209-1528 standard and all known tissue simulating liquids. ELI has been optimized regarding its performance and can be integrated into our standard phantom tables. A cover prevents evaporation of the liquid. Reference markings on the phantom allow installation of the complete setup, including all predefined phantom positions and measurement grids, by teaching three points. The phantom is compatible with all of SPEAG's dosimetric probes and dipoles.	
<b>Material</b>	Vinylester, glass fiber reinforced (VE-GF)	
<b>Shell Thickness</b>	$2.0 \pm 0.2$ mm (bottom plate)	
<b>Dimensions</b>	Major axis: 600 mm Minor axis: 400 mm	
<b>Filling Volume</b>	approx. 30 liters	

**5.2.5. Device Holder**

<b>Model</b>	Mounting Device	
<b>Construction</b>	In combination with the Twin SAM Phantom or ELI4, the Mounting Device enables the rotation of the mounted transmitter device in spherical coordinates. Rotation point is the ear opening point. Transmitter devices can be easily and accurately positioned according to IEC, IEEE, FCC or other specifications. The device holder can be locked for positioning at different phantom sections (left head, right head, flat).	
<b>Material</b>	POM	

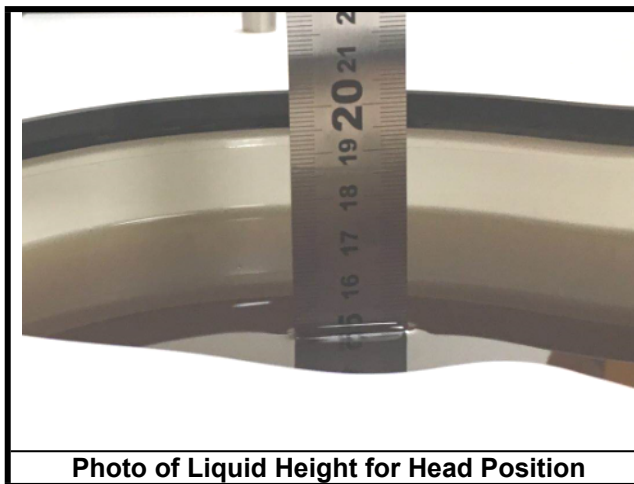
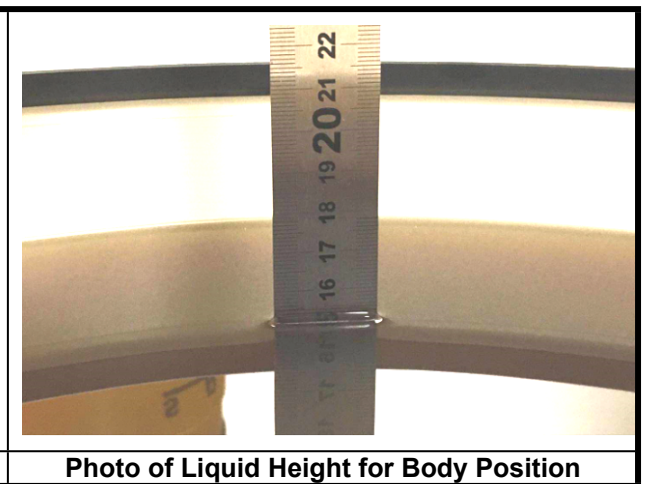
<b>Model</b>	Laptop Extensions Kit	
<b>Construction</b>	Simple but effective and easy-to-use extension for Mounting Device that facilitates the testing of larger devices according to IEC 62209-1528 (e.g., laptops, cameras, etc.). It is lightweight and fits easily on the upper part of the Mounting Device in place of the phone positioner.	
<b>Material</b>	POM, Acrylic glass, Foam	

**5.2.6. System Validation Dipoles**

<b>Model</b>	D-Serial	
<b>Construction</b>	Symmetrical dipole with 1/4 balun. Enables measurement of feed point impedance with NWA. Matched for use near flat phantoms filled with tissue simulating solutions.	
<b>Frequency</b>	750 MHz to 5800 MHz	
<b>Return Loss</b>	> 20 dB	
<b>Power Capability</b>	> 100 W (f < 1GHz), > 40 W (f > 1GHz)	

**5.2.7. Tissue Simulating Liquids**

For SAR measurement of the field distribution inside the phantom, the phantom must be filled with homogeneous tissue simulating liquid to a depth of at least 15 cm. For head SAR testing, the liquid height from the ear reference point (ERP) of the phantom to the liquid top surface is larger than 15 cm. For body SAR testing, the liquid height from the center of the flat phantom to the liquid top surface is larger than 15 cm. The nominal dielectric values of the tissue simulating liquids in the phantom and the tolerance of 5% are listed.


**Photo of Liquid Height for Head Position**

**Photo of Liquid Height for Body Position**

The dielectric properties of the head tissue simulating liquids are defined in IEEE 1528, and KDB 865664 D01 Appendix A. For the body tissue simulating liquids, the dielectric properties are defined in KDB 865664 D01 Appendix A. The dielectric properties of the tissue simulating liquids were verified prior to the SAR evaluation using a dielectric assessment kit and a network analyzer.



**Targets of Tissue Simulating Liquid**

Frequency (MHz)	Target Permittivity	Range of $\pm 5\%$	Target Conductivity	Range of $\pm 5\%$
<b>For Head</b>				
750	41.9	39.8 ~ 44.0	0.89	0.85 ~ 0.93
835	41.5	39.4 ~ 43.6	0.90	0.86 ~ 0.95
900	41.5	39.4 ~ 43.6	0.97	0.92 ~ 1.02
1450	40.5	38.5 ~ 42.5	1.20	1.14 ~ 1.26
1640	40.3	38.3 ~ 42.3	1.29	1.23 ~ 1.35
1750	40.1	38.1 ~ 42.1	1.37	1.30 ~ 1.44
1800	40.0	38.0 ~ 42.0	1.40	1.33 ~ 1.47
1900	40.0	38.0 ~ 42.0	1.40	1.33 ~ 1.47
2000	40.0	38.0 ~ 42.0	1.40	1.33 ~ 1.47
2300	39.5	37.5 ~ 41.5	1.67	1.59 ~ 1.75
2450	39.2	37.2 ~ 41.2	1.80	1.71 ~ 1.89
2600	39.0	37.1 ~ 41.0	1.96	1.86 ~ 2.06
3500	37.9	36.0 ~ 39.8	2.91	2.76 ~ 3.06
5200	36.0	34.2 ~ 37.8	4.66	4.43 ~ 4.89
5300	35.9	34.1 ~ 37.7	4.76	4.52 ~ 5.00
5500	35.6	33.8 ~ 37.4	4.96	4.71 ~ 5.21
5600	35.5	33.7 ~ 37.3	5.07	4.82 ~ 5.32
5800	35.3	33.5 ~ 37.1	5.27	5.01 ~ 5.53

The following table gives the recipes for tissue simulating liquids.

**Recipes of Tissue Simulating Liquid**

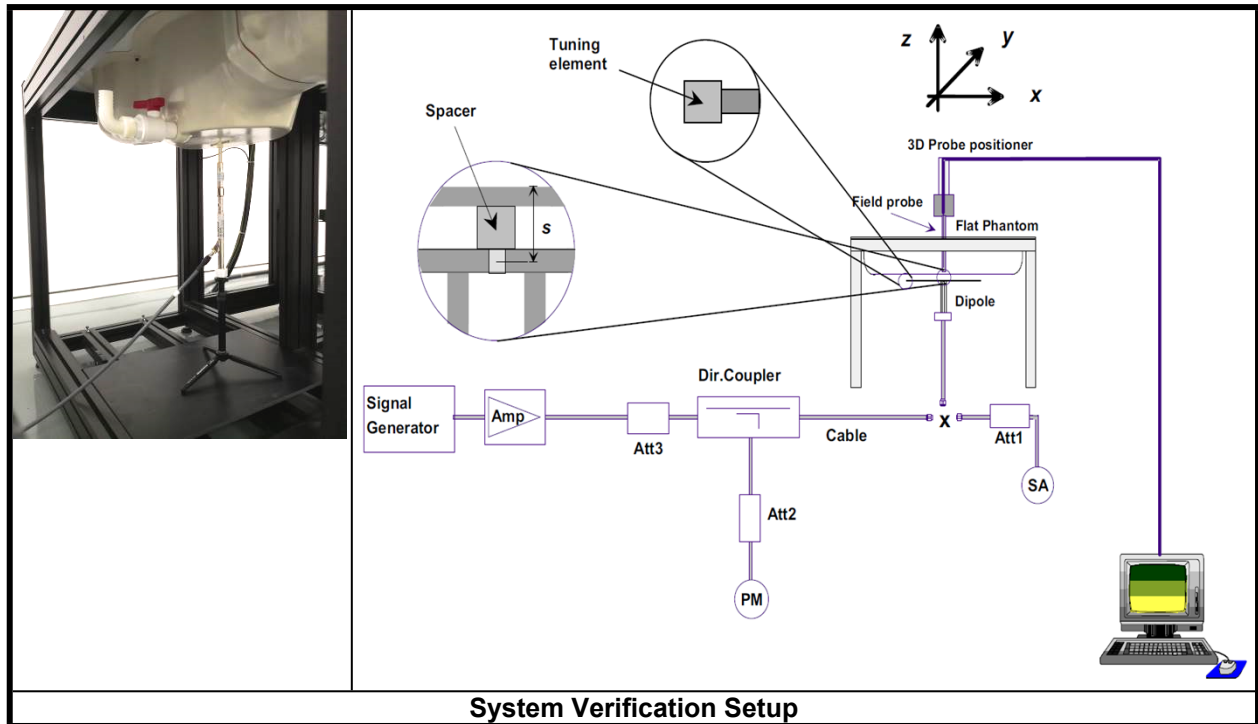
Tissue Type	Bactericide	DGBE	HEC	NaCl	Sucrose	Triton X-100	Water	Diethylene Glycol Mono-hexylether
H750	0.2	-	0.2	1.5	56.0	-	42.1	-
H835	0.2	-	0.2	1.5	57.0	-	41.1	-
H900	0.2	-	0.2	1.4	58.0	-	40.2	-
H1450	-	43.3	-	0.6	-	-	56.1	-
H1640	-	45.8	-	0.5	-	-	53.7	-
H1750	-	47.0	-	0.4	-	-	52.6	-
H1800	-	44.5	-	0.3	-	-	55.2	-
H1900	-	44.5	-	0.2	-	-	55.3	-
H2000	-	44.5	-	0.1	-	-	55.4	-
H2300	-	44.9	-	0.1	-	-	55.0	-
H2450	-	45.0	-	0.1	-	-	54.9	-
H2600	-	45.1	-	0.1	-	-	54.8	-
H3500	-	8.0	-	0.2	-	20.0	71.8	-
H5G	-	-	-	-	-	17.2	65.5	17.3

**Simulating Head Liquid (HBBL600-6000MHz), Manufactured by SPEAG:**

Water (% by weight)	Esters, Emulsifiers, Inhibitors (% by weight)	Sodium salt (% by weight)
50 - 65%	10 - 30%	8 - 25%

### 5.2.8.SAR System Verification

The system check verifies that the system operates within its specifications. It is performed daily or before every SAR measurement. The system check uses normal SAR measurements in the flat section of the phantom with a matched dipole at a specified distance. The system verification setup is shown as below.



The validation dipole is placed beneath the flat phantom with the specific spacer in place. The distance spacer is touch the phantom surface with a light pressure at the reference marking and be oriented parallel to the long side of the phantom. The spectrum analyzer measures the forward power at the location of the system check dipole connector. The signal generator is adjusted for the desired forward power (250 mW is used for 700 MHz to 3 GHz, 100 mW is used for 3.5 GHz to 6 GHz) at the dipole connector and the power meter is read at that level. After connecting the cable to the dipole, the signal generator is readjusted for the same reading at power meter.

After system check testing, the SAR result will be normalized to 1W forward input power and compared with the reference SAR value derived from validation dipole certificate report. The deviation of system check should be within 10 %.

## 6. SAR Measurement Procedure

According to the SAR test standard, the recommended procedure for assessing the peak spatial-average SAR value consists of the following steps:

- (a) Power reference measurement
- (b) Area scan
- (c) Zoom scan
- (d) Power drift measurement

The SAR measurement procedures for each of test conditions are as follows:

- (a) Make EUT to transmit maximum output power
- (b) Measure conducted output power through RF cable
- (c) Place the EUT in the specific position of phantom
- (d) Perform SAR testing steps on the DASY system
- (e) Record the SAR value

### 6.1. Area & Zoom Scan Procedure

First Area Scan is used to locate the approximate location(s) of the local peak SAR value(s). The measurement grid within an Area Scan is defined by the grid extent, grid step size and grid offset. Next, in order to determine the EM field distribution in a three-dimensional spatial extension, Zoom Scan is required. The Zoom Scan is performed around the highest E-field value to determine the averaged SAR-distribution over 10 g. According to KDB 865664 D01, the resolution for Area and Zoom scan is specified in the table below.

Items	<= 2 GHz	2-3 GHz	3-4 GHz	4-5 GHz	5-6 GHz
Area Scan ( $\Delta x, \Delta y$ )	<= 15 mm	<= 12 mm	<= 12 mm	<= 10 mm	<= 10 mm
Zoom Scan ( $\Delta x, \Delta y$ )	<= 8 mm	<= 5 mm	<= 5 mm	<= 4 mm	<= 4 mm
Zoom Scan ( $\Delta z$ )	<= 5 mm	<= 5 mm	<= 4 mm	<= 3 mm	<= 2 mm
Zoom Scan Volume	>= 30 mm	>= 30 mm	>= 28 mm	>= 25 mm	>= 22 mm

**Note:**

When zoom scan is required and report SAR is <= 1.4 W/kg, the zoom scan resolution of  $\Delta x / \Delta y$  (2-3GHz: <= 8 mm, 3-4GHz: <= 7 mm, 4-6GHz: <= 5 mm) may be applied.

### 6.2. Volume Scan Procedure

The volume scan is used for assess overlapping SAR distributions for antennas transmitting in different frequency bands. It is equivalent to an oversized zoom scan used in standalone measurements. The measurement volume will be used to enclose all the simultaneous transmitting antennas. For antennas transmitting simultaneously in different frequency bands, the volume scan is measured separately in each frequency band. In order to sum correctly to compute the 1g aggregate SAR, the EUT remain in the same test position for all measurements and all volume scan use the same spatial resolution and grid spacing. When all volume scan were completed, the software, SEMCAD postprocessor can combine and subsequently superpose these measurement data to calculating the multiband SAR.

### 6.3. Power Drift Monitoring

All SAR testing is under the EUT install full charged battery and transmit maximum output power. In DASY measurement software, the power reference measurement and power drift measurement procedures are used for monitoring the power drift of EUT during SAR test. Both these procedures measure the field at a specified reference position before and after the SAR testing. The software will calculate the field difference in dB. If the power drift more than 5%, the SAR will be retested.

### 6.4. Spatial Peak SAR Evaluation

The procedure for spatial peak SAR evaluation has been implemented according to the test standard. It can be conducted for 1g and 10g, as well as for user-specific masses. The DASY software includes all numerical procedures necessary to evaluate the spatial peak SAR value.

The base for the evaluation is a "cube" measurement. The measured volume must include the 1g and 10g cubes with the highest averaged SAR values. For that purpose, the center of the measured volume is aligned to the interpolated peak SAR value of a previously performed area scan.

The entire evaluation of the spatial peak values is performed within the post-processing engine (SEMCAD). The system always gives the maximum values for the 1g and 10g cubes. The algorithm to find the cube with highest averaged SAR is divided into the following stages:

- (a) Extraction of the measured data (grid and values) from the Zoom Scan
- (b) Calculation of the SAR value at every measurement point based on all stored data (A/D values and measurement parameters)
- (c) Generation of a high-resolution mesh within the measured volume
- (d) Interpolation of all measured values from the measurement grid to the high-resolution grid
- (e) Extrapolation of the entire 3-D field distribution to the phantom surface over the distance from sensor to surface
- (f) Calculation of the averaged SAR within masses of 1g and 10g

### 6.5. SAR Averaged Methods

In DASY, the interpolation and extrapolation are both based on the modified Quadratic Shepard's method. The interpolation scheme combines a least-square fitted function method and a weighted average method which are the two basic types of computational interpolation and approximation.

Extrapolation routines are used to obtain SAR values between the lowest measurement points and the inner phantom surface. The extrapolation distance is determined by the surface detection distance and the probe sensor offset. The uncertainty increases with the extrapolation distance. To keep the uncertainty within 1% for the 1 g and 10 g cubes, the extrapolation distance should not be larger than 5 mm.

## 7. SAR Measurement Evaluation

### 7.1. EUT Configuration and Setting

#### <Considerations Related to Bluetooth for Setup and Testing>

This device has installed Bluetooth engineering testing software which can provide continuous transmitting RF signal. During Bluetooth SAR testing, this device was operated to transmit continuously at the maximum transmission duty with specified transmission mode, operating frequency, lowest data rate, and maximum output power.

The Bluetooth duty cycle is 77.06% as following figure, according to 2016 Oct TCB workshop for Bluetooth SAR scaling need further consideration and the maximum duty cycle is 100%. therefore, the actual duty cycle will be scaled up to 100% for Bluetooth reported SAR calculation



## 7.2. EUT Testing Position

### 7.2.1. Head Exposure Conditions

This device is a Bluetooth earphone that are used in the head position, SAR evaluation is required on all sides of the headset, at 0 mm separation from a flat phantom.

### 7.3. Tissue Verification

The measuring results for tissue simulating liquid are shown as below.

Test Date	Tissue Type	Frequency (MHz)	Measured Conductivity ( $\sigma$ )	Measured Permittivity ( $\epsilon_r$ )	Target Conductivity ( $\sigma$ )	Target Permittivity ( $\epsilon_r$ )	Conductivity Deviation (%)	Permittivity Deviation (%)
Sep. 29, 2024	H2450	2450	1.788	39.953	1.80	39.20	-0.67	1.92
		2402	1.746	39.943	1.76	39.29	-0.68	1.66
		2441	1.780	39.946	1.79	39.21	-0.67	1.88
		2480	1.810	39.931	1.83	39.16	-1.20	1.97

**Note:**

The dielectric properties of the tissue simulating liquid must be measured within 24 hours before the SAR testing and within  $\pm 5\%$  of the target values. Liquid temperature during the SAR testing must be within  $\pm 2$  °C.

### 7.4. System Validation

The SAR measurement system was validated according to procedures in KDB 865664 D01. The validation status in tabulated summary is as below.

Test Date	Probe S/N	Calibration Point		Measured Conductivity ( $\sigma$ )	Measured Permittivity ( $\epsilon_r$ )	Validation for CW			Validation for Modulation		
						Sensitivity Range	Probe Linearity	Probe Isotropy	Modulation Type	Duty Factor	PAR
Sep. 29, 2024	7738	Head	2450	1.788	39.953	Pass	Pass	Pass	OFDM	N/A	Pass

### 7.5. System Verification

The measuring result for system verification is tabulated as below.

Test Date	Frequency (MHz)	1W Target SAR-1g (W/kg)	Measured SAR-1g (W/kg)	Normalized to 1W SAR-1g (W/kg)	Deviation (%)	Dipole S/N	Probe S/N	DAE S/N
Sep. 29, 2024	2450	53.40	12.70	50.80	-4.87	1014	7738	1725

**Note:**

Comparing to the reference SAR value provided by SPEAG, the validation data should be within its specification of 10 %. The result indicates the system check can meet the variation criterion and the plots can be referred to Appendix A.

## 8. Maximum Output Power

### 8.1. Measured Conducted Power Result

#### <Bluetooth Left earbud >

Mode	Bluetooth GFSK		
Channel / Frequency (MHz)	0 (2402)	39 (2441)	78 (2480)
Average Power (dBm)	13.14	13.22	13.06
Tune-up	13.5		
Mode	Bluetooth 8DPSK		
Channel / Frequency (MHz)	0 (2402)	39 (2441)	78 (2480)
Average Power (dBm)	10.84	10.98	10.76
Tune-up	11.5		
Mode	Bluetooth LE 1Mbps		
Channel / Frequency (MHz)	0 (2402)	19 (2440)	39 (2480)
Average Power (dBm)	9.62	9.71	9.47
Tune-up	10.0		
Mode	Bluetooth LE 2Mbps		
Channel / Frequency (MHz)	0 (2402)	19 (2440)	39 (2480)
Average Power (dBm)	9.62	9.74	9.56
Tune-up	10.0		

#### <Bluetooth Right earbud >

Mode	Bluetooth GFSK		
Channel / Frequency (MHz)	0 (2402)	39 (2441)	78 (2480)
Average Power (dBm)	13.16	13.20	13.10
Tune-up	13.5		
Mode	Bluetooth 8DPSK		
Channel / Frequency (MHz)	0 (2402)	39 (2441)	78 (2480)
Average Power (dBm)	11.01	11.07	10.80
Tune-up	11.5		
Mode	Bluetooth LE 1Mbps		
Channel / Frequency (MHz)	0 (2402)	19 (2440)	39 (2480)
Average Power (dBm)	9.78	9.78	9.48
Tune-up	10.0		
Mode	Bluetooth LE 2Mbps		
Channel / Frequency (MHz)	0 (2402)	19 (2440)	39 (2480)
Average Power (dBm)	9.74	9.79	9.52
Tune-up	10.0		

## 8.2. SAR Testing Results

### 8.2.1. SAR Test Reduction Considerations

#### <KDB 447498 D01, General RF Exposure Guidance>

Testing of other required channels within the operating mode of a frequency band is not required when the reported SAR for the mid-band or highest output power channel is:

- (1)  $\leq 0.8$  W/kg or 2.0 W/kg, for 1-g or 10-g respectively, when the transmission band is  $\leq 100$  MHz
- (2)  $\leq 0.6$  W/kg or 1.5 W/kg, for 1-g or 10-g respectively, when the transmission band is between 100 MHz and 200 MHz
- (3)  $\leq 0.4$  W/kg or 1.0 W/kg, for 1-g or 10-g respectively, when the transmission band is  $\geq 200$  MHz

### 8.2.2. SAR Results for Head Exposure Condition (Separation Distance is 0 cm Gap)

Plot No.	Band	Mode	Test Position	Ch.	Sample	Duty Cycle	Max. Tune-up Power (dBm)	Measured Conducted Power (dBm)	Scaling Factor	Power Drift (dB)	Measured SAR-1g (W/kg)	Scaled SAR-1g (W/kg)*
	BT	DH5	Inside	39	L	57.8%	13.5	13.20	1.07	0.1	0.069	0.13
	BT	DH5	Rear Face	39	L	57.8%	13.5	13.20	1.07	0.09	0.321	0.60
	BT	DH5	Side-1	39	L	57.8%	13.5	13.20	1.07	0.08	0.443	0.82
	BT	DH5	Side-2	39	L	57.8%	13.5	13.20	1.07	-0.07	0.454	0.84
	BT	DH5	Side-3	39	L	57.8%	13.5	13.20	1.07	-0.04	0.180	0.33
	BT	DH5	Side-4	39	L	57.8%	13.5	13.20	1.07	0.09	0.314	0.58
	BT	DH5	Side-1	0	L	57.8%	13.5	13.16	1.08	0.05	0.477	0.89
	BT	DH5	Side-1	78	L	57.8%	13.5	13.10	1.10	0.09	0.315	0.60
1	BT	DH5	Side-2	0	L	57.8%	13.5	13.16	1.08	-0.13	0.491	0.92
	BT	DH5	Side-2	78	L	57.8%	13.5	13.10	1.10	-0.05	0.31	0.59
	BT	DH5	Inside	39	R	57.8%	13.5	13.22	1.07	-0.06	0.055	0.10
	BT	DH5	Rear Face	39	R	57.8%	13.5	13.22	1.07	-0.12	0.247	0.46
2	BT	DH5	Side-1	39	R	57.8%	13.5	13.22	1.07	-0.09	0.555	1.02
	BT	DH5	Side-2	39	R	57.8%	13.5	13.22	1.07	0.04	0.380	0.70
	BT	DH5	Side-3	39	R	57.8%	13.5	13.22	1.07	0.02	0.141	0.26
	BT	DH5	Side-4	39	R	57.8%	13.5	13.22	1.07	-0.06	0.269	0.50
	BT	DH5	Side-1	0	R	57.8%	13.5	13.14	1.09	-0.08	0.384	0.72
	BT	DH5	Side-1	78	R	57.8%	13.5	13.06	1.11	-0.09	0.249	0.48

\*The reported SAR values were scaled to 100% duty cycle.



**SAR Measurement Variability**

According to KDB 865664 D01, SAR measurement variability was assessed for each frequency band, which is determined by the SAR probe calibration point and tissue-equivalent medium used for the device measurements. When both head and body tissue-equivalent media are required for SAR measurements in a frequency band, the variability measurement procedures should be applied to the tissue medium with the highest measured SAR, using the highest measured SAR configuration for that tissue-equivalent medium. Alternatively, if the highest measured SAR for both head and body tissue-equivalent media are  $\leq 1.45$  W/kg and the ratio of these highest SAR values, i.e., largest divided by smallest value, is  $\leq 1.10$ , the highest SAR configuration for either head or body tissue-equivalent medium may be used to perform the repeated measurement. These additional measurements are repeated after the completion of all measurements requiring the same head or body tissue-equivalent medium in a frequency band. The test device should be returned to ambient conditions (normal room temperature) with the battery fully charged before it is re-mounted on the device holder for the repeated measurement(s) to minimize any unexpected variations in the repeated results.

Since all the measured SAR are less than 0.8 W/kg, the repeated measurement is not required.

**Test Engineer:** Warren Xiong,

## Appendixes

**All attachments are integral parts of this test report. This applies especially to the following appendix:**

### **Appendix A: SAR Plots of System Verification**

The plots for system verification with largest deviation for each SAR system combination are shown as follows.

### **Appendix B: SAR Plots of SAR Measurement**

The SAR plots for highest measured SAR in each exposure configuration, wireless mode and frequency band combination, and measured SAR > 1.5 W/kg are shown as follows.

### **Appendix C: Calibration Certificate for probe and Dipole**

### **Appendix D: Photographs of EUT and setup**

Test Laboratory: TÜV Rheinland (Shenzhen) Co., Ltd.

Date: 2024/9/29

### System Check-D2450V2\_H2450

**DUT: Dipole 2450 MHz D2450V2 SN:1014**

Communication System: UID 0, CW; Frequency: 2450 MHz; Duty Cycle: 1:1

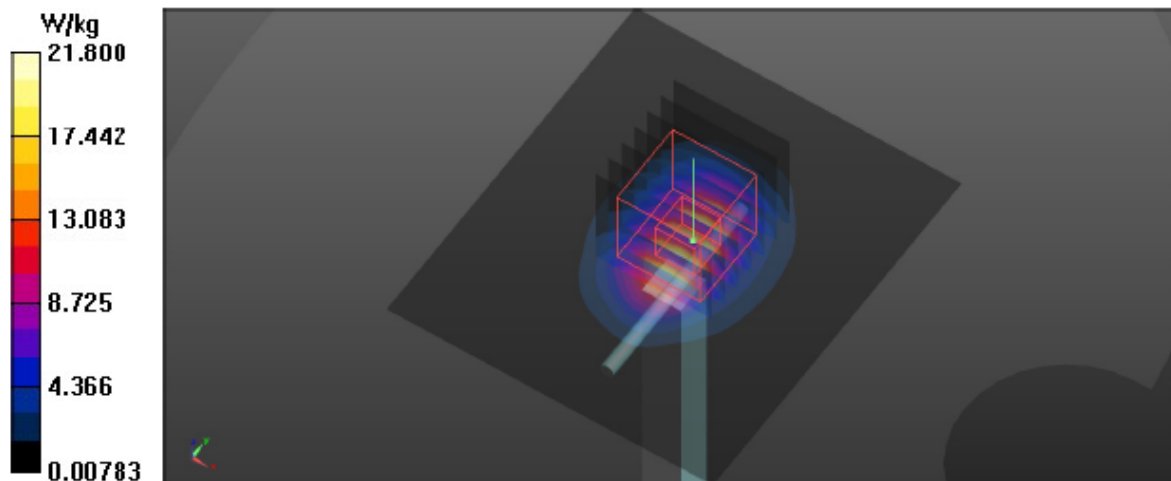
Medium: H2450 Medium parameters used:  $f = 2450$  MHz;  $\sigma = 1.788$  S/m;  $\epsilon_r = 39.953$ ;  $\rho = 1000$  kg/m<sup>3</sup>

#### DASY5 Configuration:

- Probe: EX3DV4 - SN7738; ConvF(7.6, 7.6, 7.6) @ 2450 MHz; Calibrated: 2023/12/13
- Sensor-Surface: 1.4mm (Mechanical Surface Detection)
- Electronics: DAE4 Sn1725; Calibrated: 2023/10/26
- Phantom: SAM 1; Type: QD 000 P40 CB; Serial: 1961
- Measurement SW: DASY52, Version 52.10 (4); SEMCAD X Version 14.6.14 (7483)

**Pin=250 mW/Area Scan (71x81x1):** Interpolated grid: dx=1.200 mm, dy=1.200 mm  
Maximum value of SAR (interpolated) = 21.8 W/kg

**Pin=250 mW/Zoom Scan (7x7x7)/Cube 0:** Measurement grid: dx=5mm, dy=5mm, dz=5mm  
Reference Value = 111.1 V/m; Power Drift = 0.02 dB  
Peak SAR (extrapolated) = 26.5 W/kg  
SAR(1 g) = 12.7 W/kg; SAR(10 g) = 5.86 W/kg  
Smallest distance from peaks to all points 3 dB below = 9 mm  
Ratio of SAR at M2 to SAR at M1 = 48.4%  
Maximum value of SAR (measured) = 21.2 W/kg



Test Laboratory: TÜV Rheinland (Shenzhen) Co., Ltd.

Date: 2024/9/29

### P01 BT\_GFSK\_Side 2\_Ch0\_L

DUT: EUT

Communication System: UID 0, BT; Frequency: 2402 MHz; Duty Cycle: 1:1

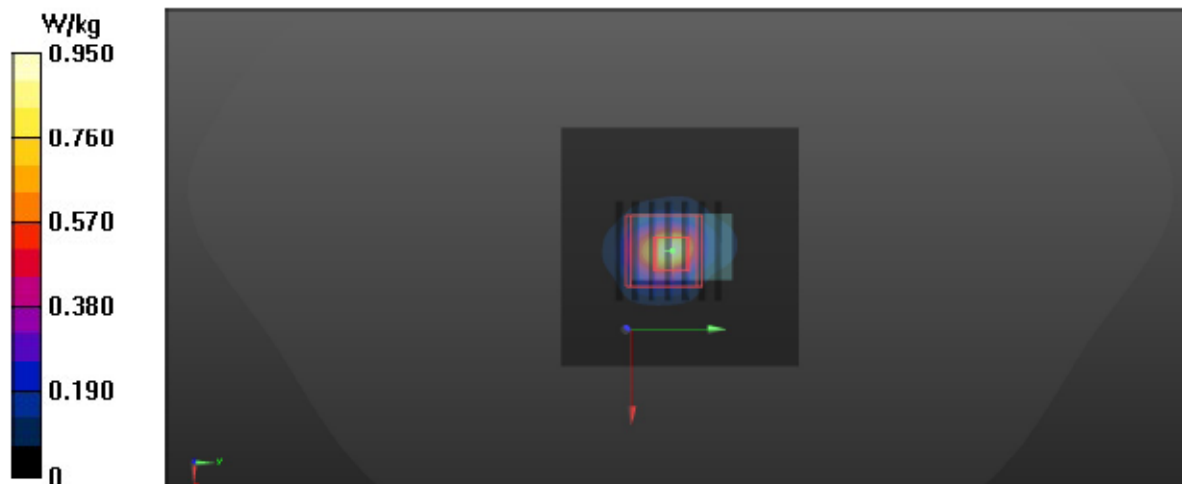
Medium: H2450 Medium parameters used:  $f = 2402$  MHz;  $\sigma = 1.746$  S/m;  $\epsilon_r = 39.943$ ;  $\rho = 1000$  kg/m<sup>3</sup>

DASY5 Configuration:

- Probe: EX3DV4 - SN7738; ConvF(7.6, 7.6, 7.6) @ 2402 MHz; Calibrated: 2023/12/13
- Sensor-Surface: 1.4mm (Mechanical Surface Detection)
- Electronics: DAE3 Sn1725; Calibrated: 2023/10/26
- Phantom: SAM 1; Type: QD 000 P40 CB; Serial: 1961
- Measurement SW: DASY52, Version 52.10 (4); SEMCAD X Version 14.6.14 (7483)

- **Area Scan (61x61x1):** Interpolated grid: dx=1.200 mm, dy=1.200 mm  
Maximum value of SAR (interpolated) = 0.950 W/kg

- **Zoom Scan (7x7x7)/Cube 0:** Measurement grid: dx=5mm, dy=5mm, dz=5mm  
Reference Value = 23.41 V/m; Power Drift = -0.13 dB  
Peak SAR (extrapolated) = 1.95 W/kg  
SAR(1 g) = 0.491 W/kg; SAR(10 g) = 0.175 W/kg  
Smallest distance from peaks to all points 3 dB below = 5 mm  
Ratio of SAR at M2 to SAR at M1 = 30.4%  
Maximum value of SAR (measured) = 1.12 W/kg



Test Laboratory: TÜV Rheinland (Shenzhen) Co., Ltd.

Date: 2024/9/29

### P02 BT\_GFSK\_Side 1\_Ch39\_R

DUT: EUT

Communication System: UID 0, BT; Frequency: 2441 MHz; Duty Cycle: 1:1

Medium: H2450 Medium parameters used:  $f = 2441$  MHz;  $\sigma = 1.78$  S/m;  $\epsilon_r = 39.946$ ;  $\rho = 1000$  kg/m<sup>3</sup>

DASY5 Configuration:

- Probe: EX3DV4 - SN7738; ConvF(7.6, 7.6, 7.6) @ 2441 MHz; Calibrated: 2023/12/13
- Sensor-Surface: 1.4mm (Mechanical Surface Detection)
- Electronics: DAE3 Sn1725; Calibrated: 2023/10/26
- Phantom: SAM 1; Type: QD 000 P40 CB; Serial: 1961
- Measurement SW: DASY52, Version 52.10 (4); SEMCAD X Version 14.6.14 (7483)

- **Area Scan (61x61x1):** Interpolated grid: dx=1.200 mm, dy=1.200 mm  
Maximum value of SAR (interpolated) = 0.895 W/kg

- **Zoom Scan (7x7x7)/Cube 0:** Measurement grid: dx=5mm, dy=5mm, dz=5mm  
Reference Value = 19.72 V/m; Power Drift = -0.09 dB  
Peak SAR (extrapolated) = 1.97 W/kg  
SAR(1 g) = 0.555 W/kg; SAR(10 g) = 0.195 W/kg  
Smallest distance from peaks to all points 3 dB below = 5.4 mm  
Ratio of SAR at M2 to SAR at M1 = 30.3%  
Maximum value of SAR (measured) = 1.35 W/kg

