

sensors and has the most versatile power requirements of any telemetry unit in its class.

Flexibility, the user interface is simple to use and yet allows enough flexibility to ensure compatibility with most industrial sensors and systems. User written scripts offer infinite opportunity for customisation.

Security, all data collected is encrypted and is transmitted using secure authenticated connections.

Ownership, at Senquip, we believe that the customer owns their data. We deliver your data to your servers in a private, secure manner. We will not access, use or resell your data - it is yours.

1.4 What is included with your Senquip ORB

When you open your ORB box, the following are included:



Figure 1.1. 1 x ORB

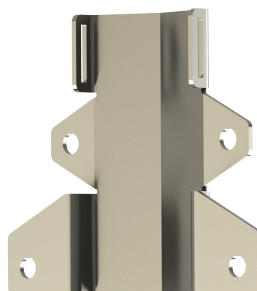


Figure 1.2. 2 x Wall and pole mounting brackets



Figure 1.3. 1 x 2-hole and 1 x 3-hole gland insert



Figure 1.4. 4 x M5x8mm mounting screws



Figure 1.5. 1 x 3mm Allen key



Figure 1.6. 1 x Getting started guide

1.5 Regulatory Information

USA: Federal Communications Commission (FCC) statement

This device complies with FCC part 15 FCC Rules.

Operation is subject to the following two conditions: 1. This device may not cause harmful interference and 2. This device must accept any interference, including interference that may cause undesired operation of the device.

FCC Warning

Changes or modifications not expressly approved by the party responsible for compliance could void the user authority to operate the equipment.

Note: This equipment has been tested and found to comply with the limits for a Class B digital device, pursuant to part 15 of the FCC Rules. These limits are designed to provide reasonable protection against harmful interference in a residential installation. This equipment generates, uses and can radiate radio frequency energy and, if not installed and used in accordance with the instructions, may cause harmful interference to radio communications. However, there is no guarantee that interference

will not occur in a particular installation. If this equipment does cause harmful interference to radio or television reception, which can be determined by turning the equipment off and on, the user is encouraged to try to correct the interference by one or more of the following measures:

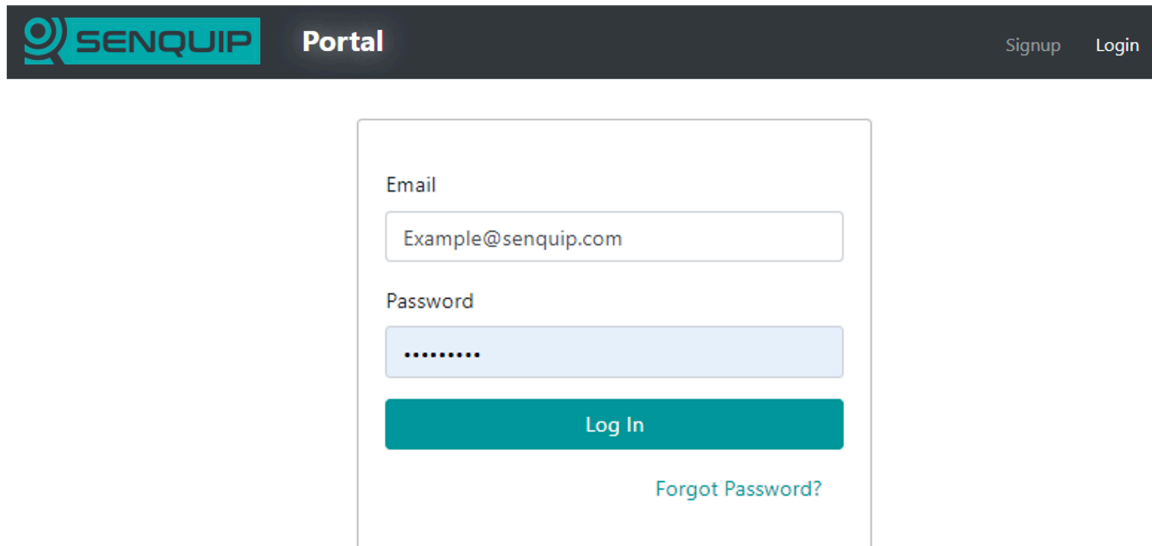
- Reorient or relocate the receiving antenna.
- Increase the separation between the equipment and receiver.
- Connect the equipment into an outlet on a circuit different from that to which the receiver is connected.
- Consult the dealer or an experienced radio/TV technician for help.

This device meets the FCC and IC requirements for RF exposure in public or uncontrolled environments.

1.5.1 Accessing Regulatory Information

You can view the device FCC ID on the Senquip Portal. To view the FCC ID

1. Launch the [Senquip Portal](#).



The screenshot shows the Senquip Portal login interface. At the top, there is a dark navigation bar with the Senquip logo and the word 'Portal' on the left, and 'Signup' and 'Login' links on the right. Below this, the main content area features a white login form. The form has two input fields: 'Email' with the placeholder text 'Example@senquip.com' and 'Password' with masked characters. Below the password field is a teal 'Log In' button and a 'Forgot Password?' link.

2. Browse to the device page