



1. Graphic for reference



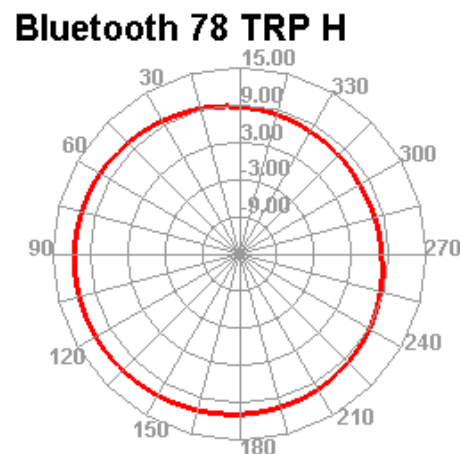
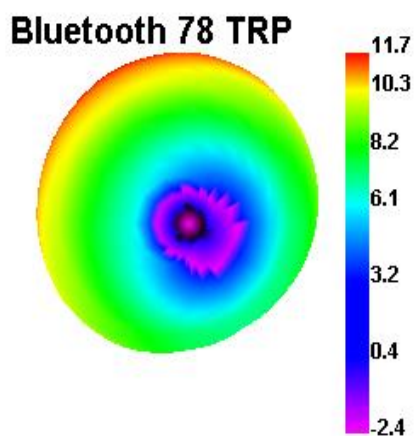
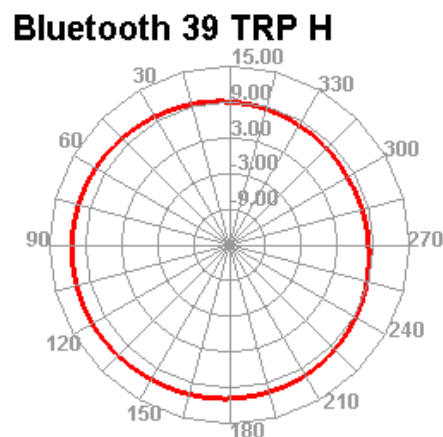
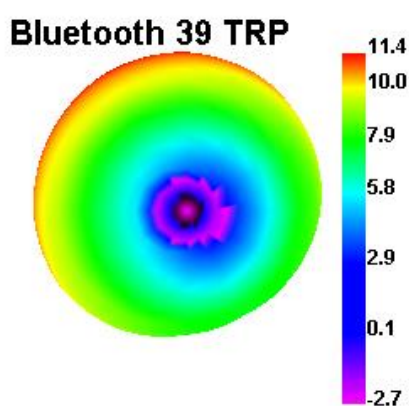
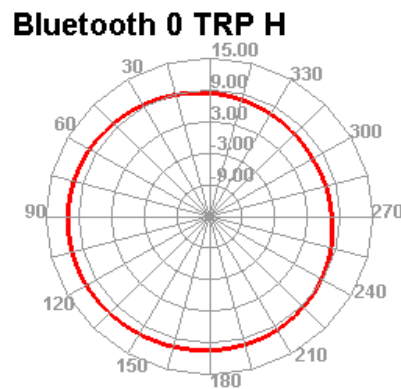
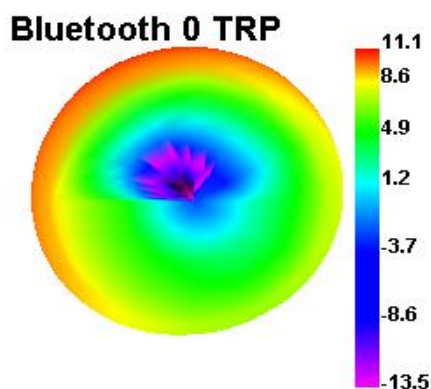
Figure 2 0.8*20mmBT

Name	ANTENNA
Model	LT13
Frequency	2.4Ghz
Input impedance	50Ω
Allowed power	5mW
Working temp.	-25 ~ +65 °C
Storage temp.	-40 ~ +85 °C
Weight	0.25g
Antenna gain天线增益	-1dBi

2.OTA(Free Space)

Channel	TRP (dBm)	TIS (dBm)
0	6.3	-91.1
39	6.5	-91.3
78	6.6	-91.2

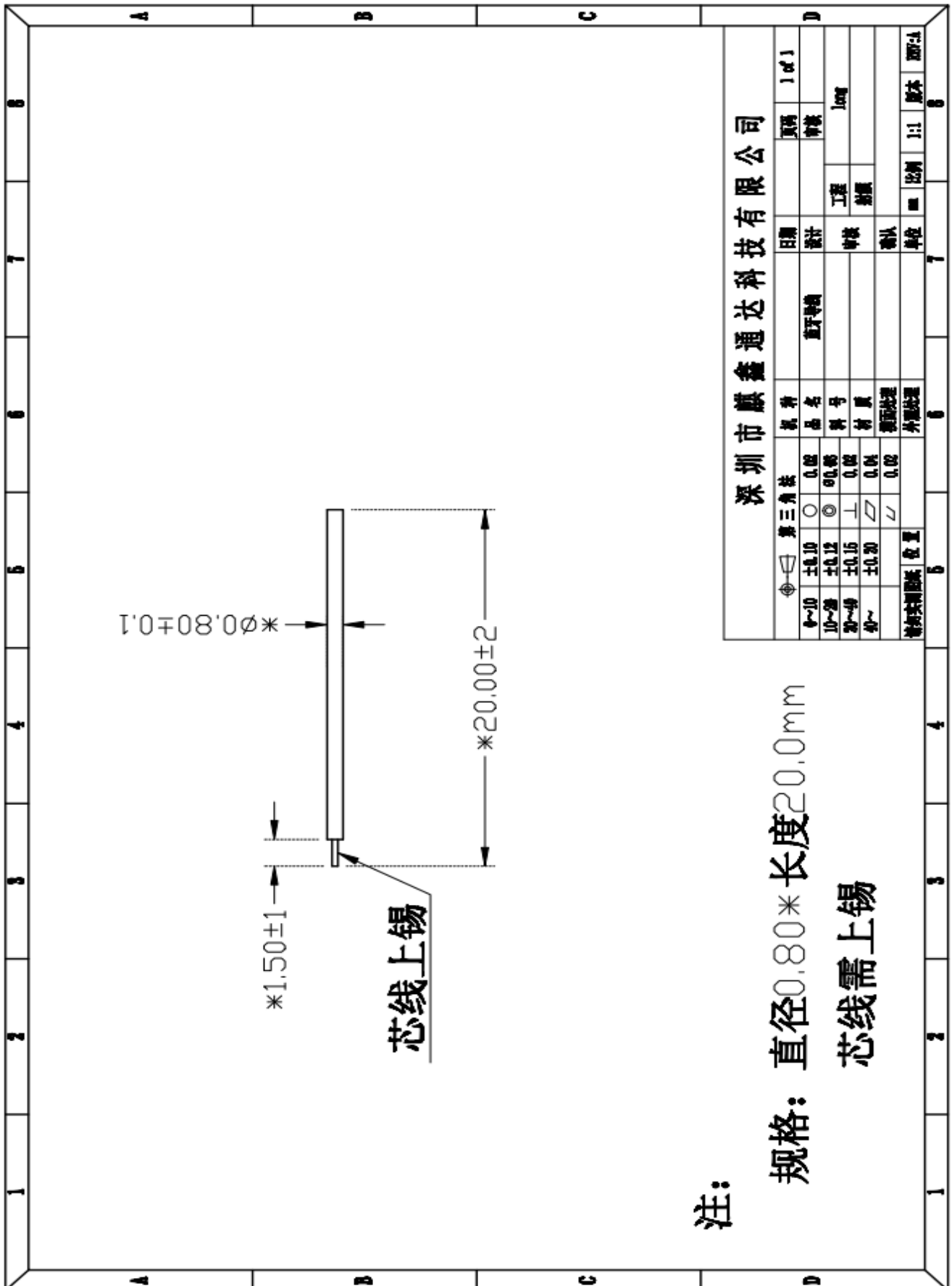
3.Field



4. BT Test

Test term	Environment	Max pairing distance	BT Call distance	
BT	Office	16-18m	10-12m	

5. Blueprint



深圳市麒鑫通达科技有限公司									
第三角法		机种		日期		页码		1 of 1	
φ~10	±0.10	○	0.02	设计		审核			
10~20	±0.12	◎	0.05	日期		工程		Long	
20~40	±0.15	⊕	0.02	审核		附属			
40~	±0.20	∇	0.04	确认		单位		比例	
槽形封端位置		表面处理		单位		比例		1:1 版本	
		表面处理		7		8		8	