

New Family Certification
Description of Models/Variants to be included in the Product Family

Applicant:	HONG KONG AIJIA IOT TRADING CO.,LIMITED
FCCID:	2BCBR-AJ-SQ20-4G
Model Number:	AJ-SQ20-4G, AJ-SQ202-4G, AJ-SQ203-4G, AJ-SQ204-4G, AJ-SQ201-4G

Detail as bellow

Model Declaration	
Describe the <u>non RF boards</u> , and circuitry differences.	<ol style="list-style-type: none"> 1. AJ-SQ20-4G, AJ-SQ202-4G, AJ-SQ203-4G, AJ-SQ204-4G, AJ-SQ201-4G have different Camera board. 2. AJ-SQ20-4G, AJ-SQ202-4G, AJ-SQ203-4G, AJ-SQ204-4G, AJ-SQ201-4G have different Power supply board. 3. AJ-SQ20-4G, AJ-SQ202-4G, AJ-SQ203-4G, AJ-SQ204-4G, AJ-SQ201-4G have different LED circuit board
Describe the <u>RF boards</u> and circuitry differences	AJ-SQ20-4G, AJ-SQ202-4G, AJ-SQ203-4G, AJ-SQ204-4G, AJ-SQ201-4G are the same.
Describe the exterior casing and color differences (if applicable).	AJ-SQ20-4G, AJ-SQ202-4G, AJ-SQ203-4G, AJ-SQ204-4G, AJ-SQ201-4G have different exterior casing and color.

MODEL	EXTERNAL PHOTOS
AJ-SQ20-4G	

AJ-SQ202-4G



AJ-SQ203-4G



AJ-SQ204-4G



AJ-SQ201-4G



MODEL


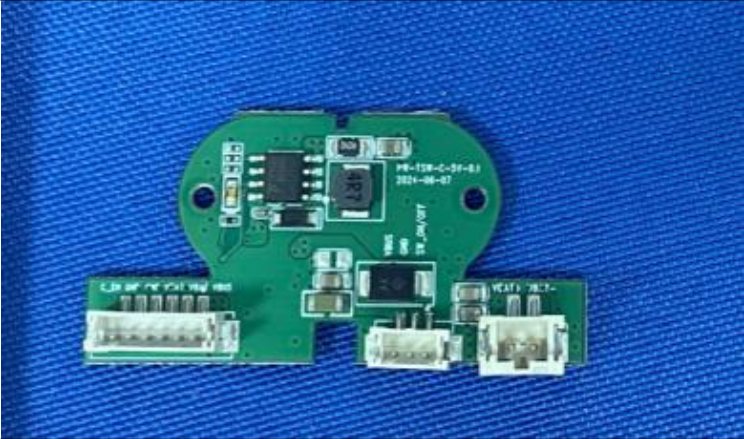

POWER SUPPLY BOARD FRONT SIDE

AJ-SQ20-4G



AJ-SQ202-4G



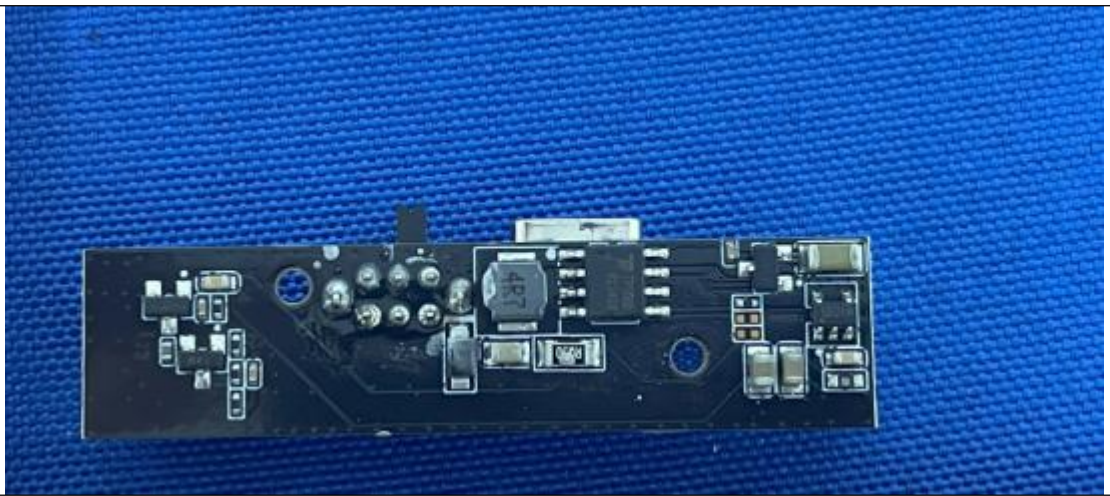
<p>AJ-SQ203-4G</p>	
<p>AJ-SQ204-4G</p>	
<p>AJ-SQ201-4G</p>	

<p>MODEL</p>	<p>POWER SUPPLY BOARD BACK SIDE</p>
--------------	-------------------------------------

AJ-SQ20-4G

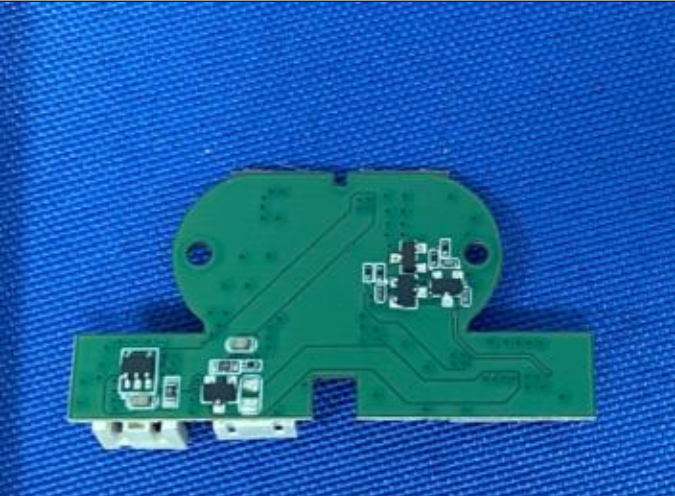
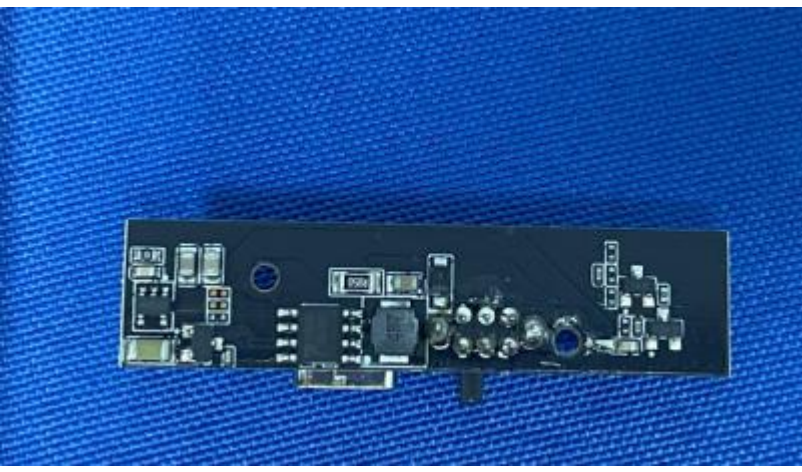



AJ-SQ202-4G



AJ-SQ203-4G



<p>AJ-SQ204-4G</p>	
<p>AJ-SQ201-4G</p>	

MODEL	MAIN CONTROL BOARD FRONT SIDE
<p>AJ-SQ20-4G</p>	

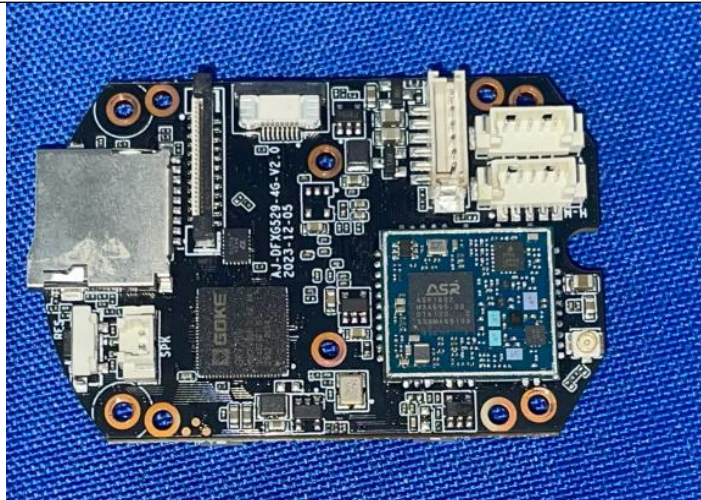
AJ-SQ202-4G



AJ-SQ203-4G

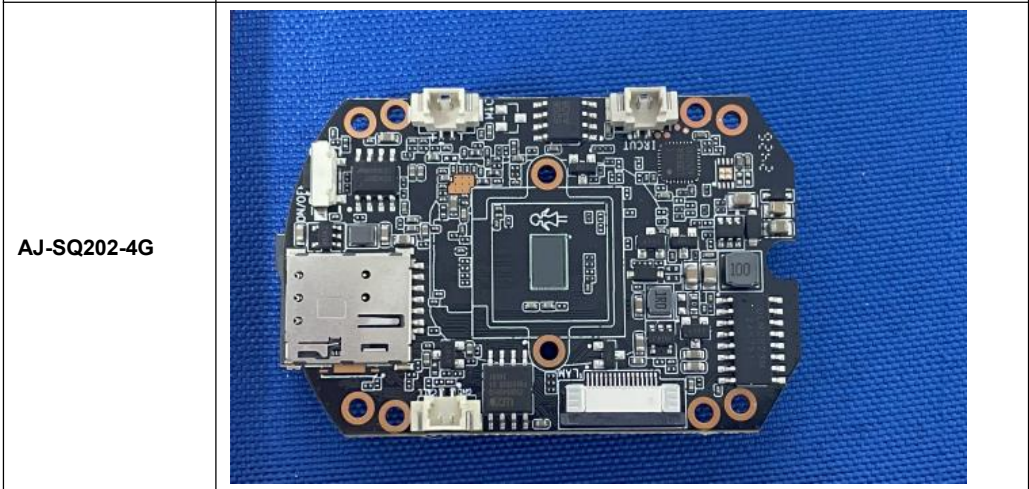
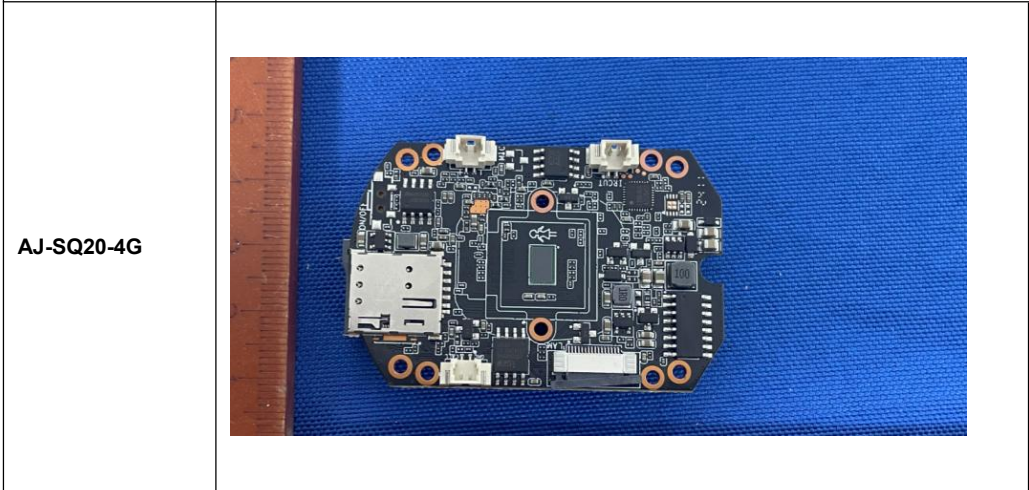


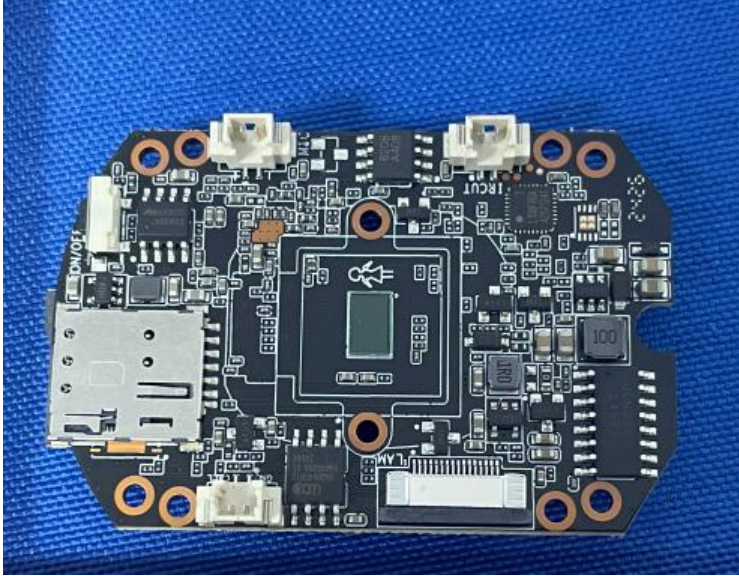
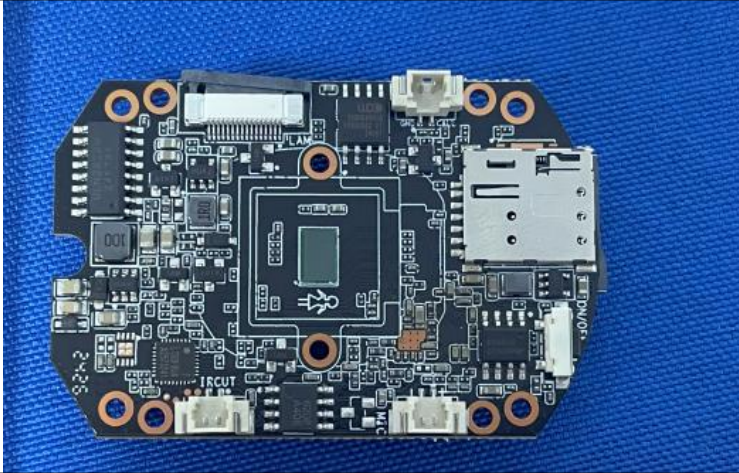
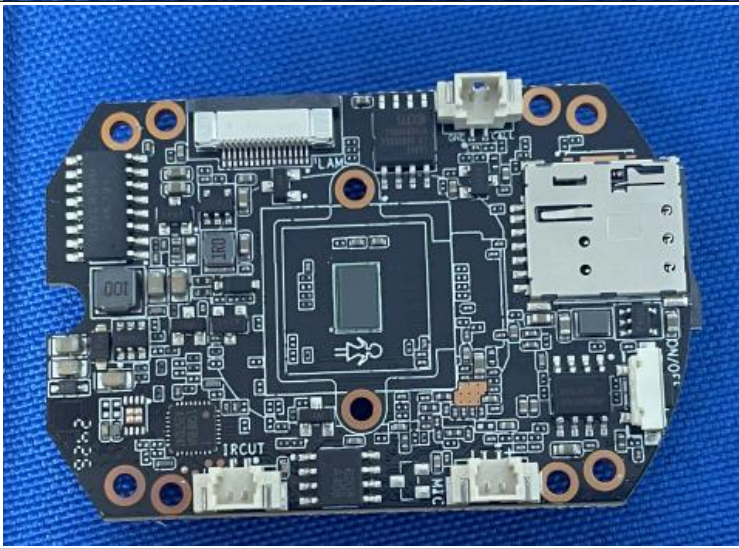
AJ-SQ204-4G





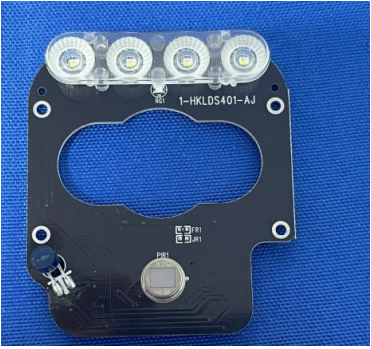
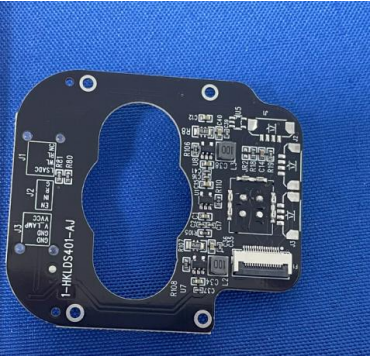

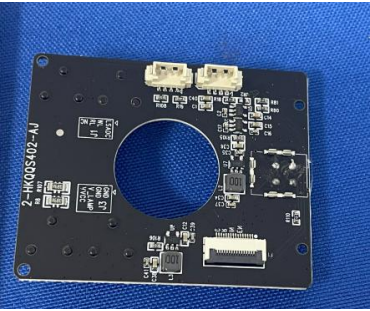






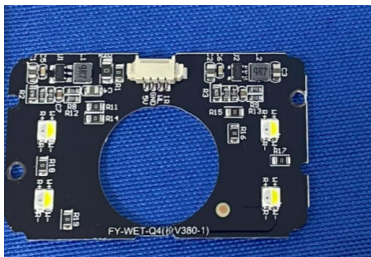

<p>MODEL</p>	<p>MAIN CONTROL BOARD BACK SIDE</p>
--------------	-------------------------------------




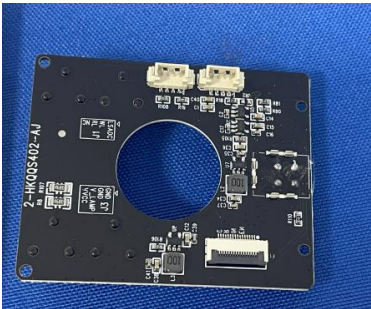

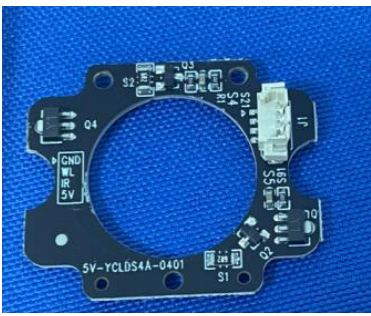



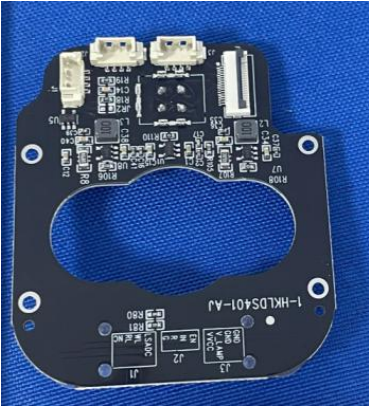
<p>AJ-SQ203-4G</p>		
<p>AJ-SQ204-4G</p>		
<p>AJ-SQ201-4G</p>		


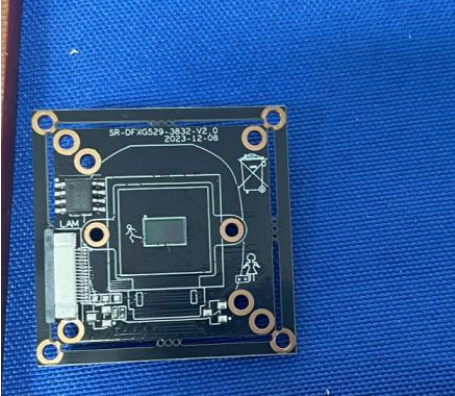

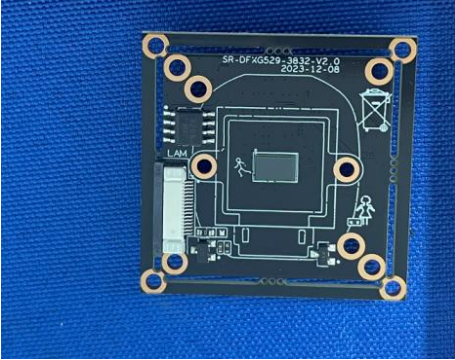
MODEL	LED CIRCUIT 1 FRONT SIDE	LED CIRCUIT 1 BACK SIDE
-------	--------------------------	-------------------------


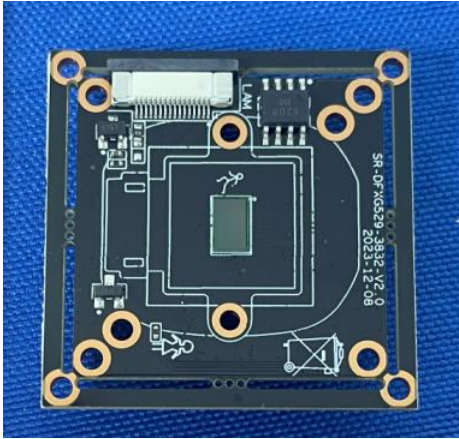

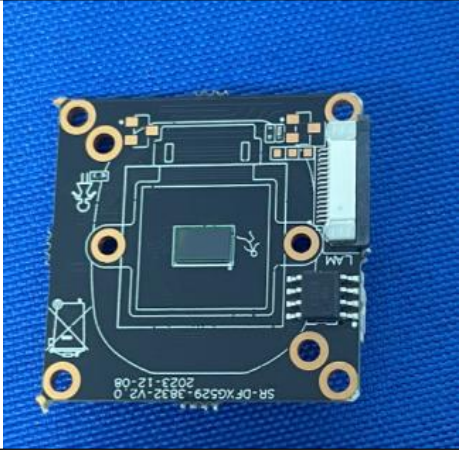

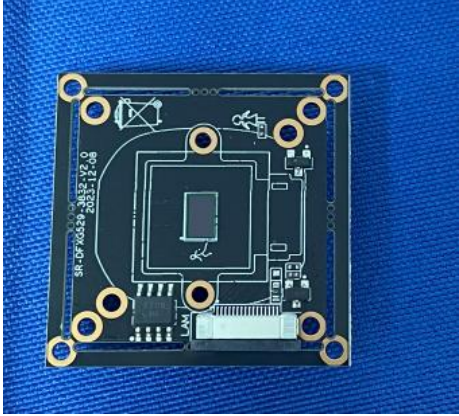
<p>AJ-SQ20-4G</p>		
<p>AJ-SQ202-4G</p>		
<p>AJ-SQ203-4G</p>		

<p>AJ-SQ204-4G</p>		
<p>AJ-SQ201-4G</p>		
<p>MODEL</p>	<p>LED CIRCUIT 2 FRONT SIDE</p>	<p>LED CIRCUIT 2 BACK SIDE</p>
<p>AJ-SQ20-4G</p>		

<p>AJ-SQ202-4G</p>	 <p>Front view of PCB AJ-SQ202-4G. The board is black with a large central circular cutout. It features a connector labeled 'J4' on the left side and a vertical strip of four components on the right. The text '1-HKLLDS402-AJ副球' is printed at the bottom.</p>	 <p>Back view of PCB AJ-SQ202-4G. It shows various electronic components, including a microcontroller, capacitors, and connectors. The text '1-HKLLDS402-AJ副球' is printed at the bottom.</p>
<p>AJ-SQ203-4G</p>	 <p>Front view of PCB AJ-SQ203-4G. The board is black with a large central circular cutout. It features four circular components at the top and a connector at the bottom. The text '2-HKQKS402-AJ副枪' is printed at the top.</p>	 <p>Back view of PCB AJ-SQ203-4G. It shows various electronic components, including a microcontroller, capacitors, and connectors. The text '2-HKQKS402-AJ' is printed on the left side.</p>
<p>AJ-SQ204-4G</p>	 <p>Front view of PCB AJ-SQ204-4G. The board is black with a large central circular cutout. It features four small components labeled 'W1', 'W2', 'H1', and 'H2' around the cutout. The text '5V-YCLDS4A-0401' is printed at the top.</p>	 <p>Back view of PCB AJ-SQ204-4G. It shows various electronic components, including a microcontroller, capacitors, and connectors. The text '5V-YCLDS4A-0401' is printed at the top and bottom.</p>

<p>AJ-SQ201-4G</p>		
---------------------------	---	--

<p>MODEL</p>	<p>CAMERA BOARD FRONT SIDE</p>	<p>CAMERA BOARD BACK SIDE</p>
<p>AJ-SQ20-4G</p>		
<p>AJ-SQ202-4G</p>		

<p>AJ-SQ203-4G</p>		
<p>AJ-SQ204-4G</p>		
<p>AJ-SQ201-4G</p>		

Sincerely,

Yong Tang

(Signed)

Name / Title: / Yong Tang/Marketing director

Company: Address: HONG KONG AIJIA IOT TRADING CO.,LIMITED/1301-1302, West Building6, Tian An Cloud Park, NO.2018, Xuegang Road, Bantian SubDistrict, Long Gang District, ShenZhen, China

Phone: 13510657477

Fax: /

E-Mail: tangyong@ihome-iot.com