

尺寸 70x90mm

User Manual



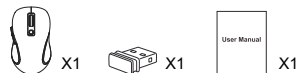
Model:M01

EN DE FR IT ES

EN

User Guide

Packing Content:

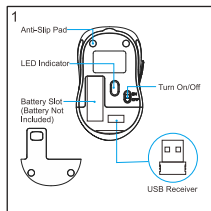


System requirements:

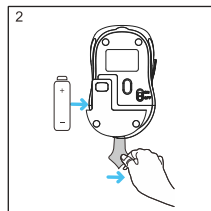
Mac OS/Windows 7/Windows 8/Windows 10/
Vista/Linux

Features:

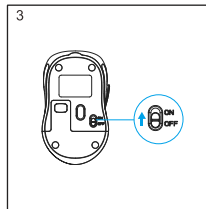
Real Rubber
800/1200/1600 DPI



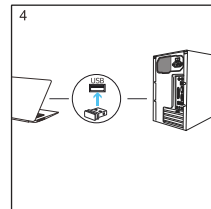
1.The USB receiver is inside the mouse



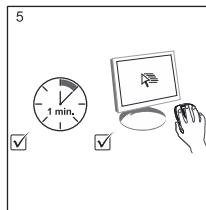
2.Put a AA battery inside



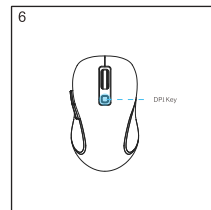
3.Turn on the switch button



4.Insert the receiver into the USB port



5.Start to use the mouse



6.Adjust the DPI by clicking the DPI key

NOTE:

This equipment has been tested and found to comply with the limits for a Class B digital device, pursuant to part 15 of the FCC Rules. These limits are designed to provide reasonable protection against harmful interference in a residential installation. This equipment generates uses and can radiate radio frequency energy and, if not installed and used in accordance with the instructions, may cause harmful interference to radio communications. However, there is no guarantee that interference will not occur in a particular installation. If this equipment does cause harmful interference to radio or television reception, which can be determined by turning the equipment off and on, the user is encouraged to try to correct the interference by one or more of the following measures:

- Reorient or relocate the receiving antenna.
 - Increase the separation between the equipment and receiver.
 - Connect the equipment into an outlet on a circuit different from that to which the receiver is connected.
 - Consult the dealer or an experienced radio/TV technician for help
- Changes or modifications not expressly approved by the party responsible for compliance could void the user's authority to operate the equipment.

This device complies with Part 15 of the FCC Rules.

Operation is subject to the following two conditions:

- (1) this device may not cause harmful interference, and
- (2) this device must accept any interference received, including interference that may cause undesired operation.

The device has been evaluated to meet general RF exposure requirement.
The device can be used in portable exposure condition without restriction.