



EXPERIENCE AND INNOVATION
SINCE 1948

Mod 540050

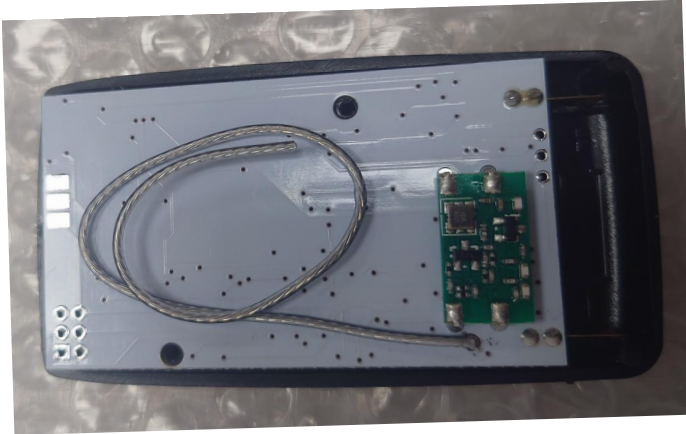
315 MHz ANTENNA DATASHEET

Material(s): Electrolytic silver or nickel-plated copper with FEP insulation

Dimensions: length 237mm (+/- 3mm) * 1.5mm diameter

RF features: 315MHz tuned

Installation layout/picture:



All measurements were performed radiated and therefore additional antenna gain documentation is not required