

中文

使用说明书

M113

OWS 蓝牙耳机

产品结构图



包装清单

耳机x2pcs
充电仓x1pcs
Type-C充电线 x1pcs
说明书x1pcs

产品操作介绍

功能	操作	指示灯	提示音
配对名	M113		
开机	耳机在充电仓内情况下，取出耳机自动开机/耳机关机状态下，长按触摸键3秒开机	红灯交替闪烁	Power on /开机
关机	耳机放入充电仓内自动关机/耳机开机状态下，长按触摸键3秒关机	红灯长亮1秒后熄灭	Power off /关机
左右耳机配对	左右耳机开机后自动进入配对模式	左右耳机同时成功，主耳机左蓝灯交替闪烁，副耳机无灯光	Connected /连接成功 配对/Pairing
切换中英文提示音	未连接智能设备情况下，连击任意左/右耳机触摸键4次，进行提示切换，出厂默认英文	/	English/中文
智能设备连接	当双耳配对成功后，自动进入待连接状态。此时打开智能设备的蓝牙并搜索设备名为“M113”进行连接，耳机与智能设备连接成功后，有提示音，且耳机指示灯熄灭	左右耳灯光熄灭	Connected /连接成功
切换音乐/游戏模式	连接设备状态下连击左右耳机触摸键4次，进行模式切换，出厂默认音乐模式。	/	音乐/游戏模式 MUSIC/GAME MODE
上一曲	音乐播放暂停后，连击左耳机触摸键三次	/	/
下一曲	音乐播放暂停后，连击右耳机触摸键三次	/	/
增加音量	音乐播放暂停后，单击左耳机触摸键	/	最大音量提示(响)
减小音量	音乐播放暂停后，单击右耳机触摸键	/	/
语音助手	连接状态下，长按左耳机触摸键2秒放开，即可唤醒语音助手	/	叮咚
接听来电	来电状态下，双击任意左/右耳机触摸键	/	手机铃声提示音
拒接来电	来电状态下，长按任意左/右耳机触摸键2秒	/	/
挂断电话	通话状态下，双击任意左/右耳机触摸键	/	/

清除配对记录	耳机与蓝牙设备连接或断开连接的状态下：【五击】在耳机和右耳机触摸键，随即耳机过往连接的蓝牙设备记录将进行清除并自动关机此功能适用以下情况： A. 双耳持续配对无反应 B. 耳机被其它蓝牙设备错误地配对 C. 耳机与多个蓝牙设备连接过导致蓝牙设备长时间长机不确定 D. 需清除配对记录时 特别提示：当单边耳机出现无声音，或无法正常配对时，请按照上页重置操作。	power off /关机
低电量提醒	当耳机的电压低于3.3V，会有提示音，直至耳机关机 红灯闪烁5秒一次	叮咚
断开连接	超出有效连接范围，或手动操作断开智能设备连接 主耳机红灯交替闪烁，副耳机灯灭	Disconnected /断开连接
自动回连	开机后重新连接，在有效范围内，耳机自动回连到上一次连接过的智能设备 灯熄灭	connected /连接成功
耳机充电	耳机放回充电仓内部自动关机并开始充电，耳机灯熄灭，充满后灯熄灭	
充电仓给耳机充电	耳机放入充电仓中，充电仓给耳机定时充电并屏幕显示当前电量和耳机的充电状态，耳机充电指示灯指示灯熄灭而且充电仓屏幕显示充电状态停止，最后充电仓屏幕显示剩余电量115%后熄灭。	
充电仓充电	当充电仓通过Type-C数据线连接到标准输出5V电压的电源适配器进行充电，充电仓屏幕亮起并内部指示灯常亮。	
充电仓充满电	充电仓充满电后屏幕显示满电数字 100	

耳机参数

1. 产品名称: M113

2. 蓝牙版本: Bluetooth 5.49

3. 支持模式: AAC/SBC

4. 蓝牙传输距离: 10m

5. 载波频率: 2.402GHz-2.480GHz

6. 频段范围: 20Hz-20KHz

7. 喇叭尺寸: Φ13mm

8. 喇叭灵敏度: 100dB ±3dB

9. 喇叭阻抗: 32Ω±15%
10. 喇叭额定功率: 5mW

11. 耳机电池容量: 3.7V/40mAh (聚合物电池)

12. 充电仓电池容量: 3.7V/300mAh (聚合物电池)

13. 充电接口: USB Type-C

14. 耳机待机时间: ≥4-5小时

15. 耳机单次充电时间: ≥1.5小时

16. 充电仓充电时间: ≥1.5小时

17. 充电仓给耳机充电次数: 约3-4次

18. 关机待机电时间: ≥3000小时

备注：当蓝牙耳机连接智能设备，切换游戏模式时，耳机的使用时长和连接距离会有缩短

简单故障排查

故障	原因	解决方法
不开机	耳机电量不足	对耳机进行充电
耳机内红灯亮	耳机电量不足	对耳机进行充电
充电无提示	耳机没有放好	调整耳机放置的位置
自动关机	自动电量不足	对耳机进行充电
耳机有回音	音量太大或者环境太嘈杂	调节音量或更换环境
耳机有杂音	外界干扰严重或距离手机太远	更换地点或靠近手机
对方声音小	耳机佩戴不正确或音量太小	调节耳机佩戴或音量大小
信号断续	外界干扰严重或距离手机太远	选择无干扰的环境或靠近手机

安全指引

1. 初次使用本产品前，请先充满电再使用。

2. 产品不是玩具，12岁以下儿童需在成年人监护下使用。

3. 请使通过正规厂家安全认证的5V/1A充电器，避免支持高压电的快速充电器对产品造成损坏。

4. 请在安全的环境下充电，在给充电仓充电时，电量充满后请尽快将充电线拔出，避免长时间充电对电池造成损坏。充电仓的充电方式为Type-C接口。

5. 本产品内置不可拆卸的可重复充电电池，重复对耳机进行充电和放电会随着时间推移而导致电池性能下降，这对于所有可以重复充电电池来说都属于正常现象。

6. 本产品带有锂电池，如长时间未使用，请至少一个月充电一次。

7. 因个体差异原因，如佩戴时感到皮肤不适，请停止佩戴并咨询医生。

8. 在蓝牙耳机产品使用时，请将耳机音量调整至合适音量大小，以免长期在大音量状态下对听力造成损伤。

9. 如果您在从事需要集中注意力的活动时使用本产品，应注意自身和他人的安全，例如驾车或骑行时，在道路、施工环境、铁路上或徒步行走时，您应取下耳机或调整音量以确保可以听到周围的声音，包括警报和警告信号。

10. 请遵守所在地反歧视或国家的相关规定，驾车时按照要求使用本产品。

11. 本产品含有磁性材料，使用或存放产品时，请远离具有强磁场或强电场的电器，如微波炉、电冰箱等。

12. 建议在温度-0°C~+45°C的环境中使用本产品。当环境温度低于 +5°C时，电池性能会受到限制。

13. 有明文规定禁止使用无线设备的场所，请勿使用本产品，否则可能会干扰其它电子设备或导致其它危险。

14. 靠近医疗及工业设备或飞机时，请咨询当地工作人员能否使用。

15. 对本产品清洁和维护前，请停止使用本产品，关闭所有应用，并断开与其它设备的所有连接或线路。

16. 请根据本地法令，正确处理废弃电子产品，不可将电子电气设备、部件、电池与其它生活垃圾一起丢弃。

警告

1. 请阅读本说明书的内容以使用，避免产品错误操作损坏。

2. 本产品请远离儿童、火源、热源、冷冻源、水源及化学品。

3. 请勿长时间使用大量接收，以免对听力造成不良影响。

4. 请勿将产品及附件浸入任何液体或用水冲洗产品，否则导致火灾或触电危险。

5. 请勿将产品放置在太阳直射或者温度高的地方。高温会缩短电子部件的使用寿命。损坏电池，使某些塑料部件变形。

6. 请勿将本产品放在尘土多、温度和湿度过高或过低的地方保存。

7. 请勿将磁条卡(例如银行卡、公交卡等)长期接触本产品，否则可能导致磁条卡被磁场损坏。

8. 请勿在本产品上施加较大的压力，或拆卸、摔打、震动本产品，以防产品损坏。

9. 请勿在靠近热源处使用本产品，如加热器、热风调节器、炉灶或其他产生热量的仪器。

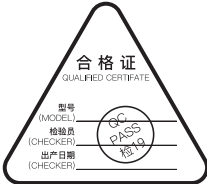
10. 请勿堵塞本产品上的开口处，如充电口、指示灯、麦克风等。

11. 请勿在暴风雨天气下使用设备，雷暴可能导致设备出现故障，增大电击的风险。

12. 请避免本产品及其配件用淋成受潮，且激烈运动或出汗较多时使用本产品，防止液体渗透到产品内部损坏本产品。

13. 产品属于内置聚合物理电池，不可更换，请勿弄弄或靠近以火中，以免爆炸、起火等危险发生。

14. 如因消费者违反上述警示而不恰当地使用所造成的人身及财产损失自行承担一切后果本公司将不产生任何法律责任。



产地：中国·广东

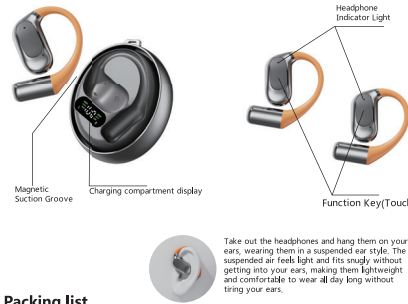
英语

INSTRUCTION MANUAL

M113

OWS Bluetooth earphones

Product structure diagram



Packing list

Headphones x2pcs
Charging case x1pcs
Type-C charging cable x1pcs
Instruction manual x1pcs

Introduction to product operation

function	operate	Light	Tone
Pair name	M113		
Boot	Headphones in the case of charging bin, take out the headphones automatically, boot/headphones off state, Long Touch Key 3 seconds to boot	Red and blue lights flash alternately	Power on /开机
Shutdown	Put the earphone into the charging bin and shut down automatically. Press the touch button for 5 seconds to shut down the earphone	The red light stays on for 1 second before turning off	Power off /关机
Pair the left and right earphones	The left and right earphones will automatically enter pairing mode after powering on	After successful pairing of the left and right ears, the red and blue lights of the main headphones alternate flashing, and the light of the auxiliary ear goes out	Connected/pairing successfully
Toggle the Chinese and English prompt tones	Without connecting the smart device, double-click any left/right ear touch key 4 times, language switch. Factory default English	/	English/中文
Smart device connectivity	When the ears are successfully paired, it will automatically enter the state to be connected at the time, upon the Bluetooth list of the smart device search and the Bluetooth connection, when the earbuds are successfully connected to the smart device, there will be a prompt tone, and the headset indicator will go off	The lights in the left and right ears are turned off	Connected /连接成功
Toggle Music/Game mode	Connect the device to the state of the left and right ear touch keys 4 times, mode switching, the factory default music mode	/	音乐/游戏模式 MUSIC/GAME MODE
Play/Pause	After the music player starts, double-click any left/right headphone touch button	/	/
Previous song	After the music player starts, click the left earphone touch button three times	/	/
Next song	After the music player starts, double-click the right earphone touch button three times	/	/
Increase the volume	After the music player starts, click the touch button on the right headset	/	Maximum volume indicator (beep)
Reduce the volume	After the music player starts, click the touch button on the left headset	/	/
Voice assistant	Connect the device to the state of the left earphone touch button 2 seconds to release, you can wake up the voice assistant	/	Ding Dong
Answer an incoming call	When the call is incoming, double-click any left or right earphone function key	/	Ringtone of your phone

Reject an incoming call	When the call is incoming, press and hold the function button of any left or right earphone for 2 seconds	/	/
Hang up	While on the phone, double-click the touch button on any headset	/	/
Clear the pairing history	When the earphones are not connected or disconnected from the Bluetooth device, press the touch buttons on the left and right earphones for 5 seconds. The earphones will automatically clear the pairing history and return to the initial state. The factory default is to be in the initial state.		power off / shutdown
Low battery alarm	When the voltage of the earbuds is lower than 3.3V, there will be a prompt up to the ear Powered off	The red light flashes every 5 seconds	Ding Dong
Disconnect	Outside the effective connection range, or manually disconnect the Bluetooth connection of the smart device	The main headphones' red and blue lights flash alternately, while the auxiliary headphones' light goes out	Disconnected /断开连接
Automatic reconnection	After powering on or disconnecting the earbuds will automatically reconnect to the last connected smart device within the effective distance	The lights go out	connected /连接成功
Charge the headphones	The earphones will automatically shut down and start charging when placed back in the charging compartment. The red light of the earphones will remain on, and the light will turn off when fully charged		
The charging bin charges the headphones	The headphones is put into the charging bin, the charging bin immediately charges the headphone and activates the screen to show the current charge and the charging status of the headphones. The charging indicator lamp turns off when the headphones is fully charged and the charging bin screen shows the charging status stops, the final charging indicator screen shows the remaining light to go off after 15 seconds		
Charging bin charging	When the battery is too low, charge the battery with a power adapter with a standard output of 5V. The battery screen lights up and flashes to show the current battery.		
The charging bin is fully charged	Charging bin charging screen display always bright number 100		

Note: When the Bluetooth headset is connected to a smart device and the game mode is switched, the usage time and connection distance of the headset will be shortened

Headset parameters

1. Product name: M113

2. Bluetooth version: Bluetooth 5.49

3. Support mode: AAC/SBC

4. Bluetooth transmission distance: 10m

5. Carrier frequency: 2.402GHz-2.480GHz

6. Frequency response range: 20Hz-20KHz

7. Horn size: Φ13mm

8. Horn sensitivity: 100DB ±3dB

9. Horn impedance: 32Ω±15%
10. Horn rated power: 5mW

11. Headphone battery capacity: 3.7V/40mAh (polymer battery)

12. Charging bin battery capacity: 3.7V/300mAh (polymer battery)

13. Charging interface: USB Type-C

14. Headset use time: ≥4-5 hours

15. Earphone single charging time: ≥1.5 hours

16. Charging time: ≥1.5 hours

17. Charge the headset: About 3-4 times

18. Shutdown standby time: ≥3000 hours

Simple troubleshooting

fault	cause	Resolution
Doesn't turn on	The headphones are low on battery	Charge the headphones
Headphones flash red light	The headphones are low on battery	Charge the headphones
Charging is slow	The headphones were not put away	Adjust the position where the headphones are placed
Automatic power off	Automatic low battery	Charge the headphones
The headphones have an echo	The volume is too loud or the environment is too noisy	Adjust the volume or change the environment
There is a murmur from the headphones	There is a murmur from the headphones or too far away from the phone	Change the location or be close to your phone
The other party's voice is quiet	The headphones are worn incorrectly or the volume is too low	Adjust the headset wear or volume
The signal is intermittent	Serious external interference or too far away from the phone	Choose a distraction-free environment or be close to your phone

Safety guidelines

1. Before using this product for the first time, please fully charge it before using it.

2. The product is not a toy, and children under the age of 12 must be used under the supervision of an adult.

3. Please use a 5V/1A charger that has passed the safety certification of a regular manufacturer to avoid damage to the product caused by a fast charging charger that supports high voltage.

4. Please charge in a safe environment, when charging the charging case, please pull out the charging cable as soon as possible after the power is fully charged to avoid damage to the battery caused by long-term charging. The charging method of the charging case is the Type-C interface.

5. This product has a built-in non-removable rechargeable battery, and repeated charging and discharging of the earbuds will lead to a decrease in battery performance over time, which is normal for all rechargeable batteries.

6. This product comes with a healthy battery, if it has not been used for a long time, please charge it at least once a month.

7. If you feel skin discomfort when wearing it due to individual differences, please stop wearing it and consult a doctor.

8. When using this product with Bluetooth connection, please adjust the sound of the earphones to an appropriate volume to avoid hearing damage caused by long-term loud volume.

9. If you use this product while engaging in activities that require concentration, you should pay attention to your own safety and the safety of others, such as when driving or cycling, on roads, construction sites, railways, or walking. You should remove your headphones or adjust the volume to ensure that you can hear the sounds around you, including alarms and warning signals.

10. Please follow the relevant regulations of your region or country and use this product as required when driving.

11. This product contains magnetic materials, please keep away from electrical appliances with strong magnetic or electric fields, such as microwave ovens, refrigerators, etc., when using or placing the product.

12. It is recommended to use this product in an environment with a temperature of -0°C~+45°C. When the ambient temperature is below -5°C, battery performance is limited.

13. Do not use this product in places where it is expressly prohibited to use wireless equipment, otherwise it will interfere with other electronic equipment or cause other dangers.

14. Before approaching medical or industrial equipment or boarding a plane, please ask the local staff if they can use it.

15. Before cleaning and maintaining this product, stop using this product, turn off all applications, and disconnect all connections or cables to other equipment.

16. Please dispose of waste electronic products properly in accordance with local laws and regulations, and do not dispose of electrical and electronic equipment, parts, batteries and other household waste.

warn

1. Please follow the content of this manual to avoid damage to the product due to incorrect operation.

2. Keep this product away from children, fire, heat, refrigeration, water and chemicals.

3. Do not listen at a loud volume for a long time to avoid adverse effects on hearing.

4. Do not immerse the product and accessories in any liquid or rinse the product with water, otherwise it will cause fire or electric shock hazard.

5. Do not place the product in the sun or in a place with high temperature. High temperatures can shorten the life of electronic components, damage batteries, and deform certain plastic parts.

6. Do not store this product in a place with a lot of dust, too high or too low temperature and humidity.

7. Do not contact the magnetic stripe card (such as bank card, bus card, etc.) with this product for a long time, otherwise it may cause the magnetic stripe card to be damaged by the magnetic field.

8. Do not apply greater pressure to this product, or disassemble, beat, or shake this product to prevent damage to the product

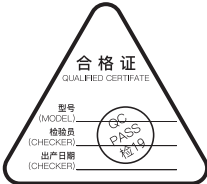
9. Do not use this product near heat sources, such as radiators, hot air regulators, stoves, or other instruments that generate heat

10. Do not block the openings of this product, such as charging ports, indicator lights, microphones, etc.

11. Do not use the device in rainstormy weather, thunderstorms may cause the device to malfunction and increase the risk of electric shock.

12. Please avoid using this product when this product and its accessories are exposed to rain or moisture, and when you exercise vigorously or sweat a lot, to prevent liquid from penetrating into the product interface in activities that require concentration, you should pay attention to your own safety and the safety of others, which cannot be replaced, please do not discard or put it in the fire to avoid explosion, fire and other dangers.

14. If the consumer violates the above warning and inappropriate use, the personal and property damage will be borne by the company, and the company will not incur any legal responsibility.



产地：中国·广东

FCC Warning:

This equipment has been tested and found to comply with the limits for a Class B digital device, pursuant to part 15 of the FCC Rules. These limits are designed to provide reasonable protection against harmful interference in a residential installation. This equipment generates, uses and can radiate radio frequency energy and, if not installed and used in accordance with the instructions, may cause harmful interference to radio communications. However, there is no guarantee that interference will not occur in a particular installation. If this equipment does cause harmful interference to radio or television reception, which can be determined by turning the equipment off and on, the user is encouraged to try to correct the interference by one or more of the following measures:

- Reorient or relocate the receiving antenna.
- Increase the separation between the equipment and receiver.
- Connect the equipment into an outlet on a circuit different from that to which the receiver is connected.
- Consult the dealer or an experienced radio/TV technician for help.

Caution: Any changes or modifications to this device not explicitly approved by manufacturer could void your authority to operate this equipment.

This device complies with part 15 of the FCC Rules. Operation is subject to the following two conditions:

(1) This device may not cause harmful interference, and (2) this device must accept any interference received, including interference that may cause undesired operation.

This equipment complies with FCC radiation exposure limits set forth for an uncontrolled environment. This equipment should be installed and operated with minimum distance 0cm between the radiator and your body.