

**Features and Benefits** 1

**✓ A versatile mood light for bedroom, kids' rooms, and camping.**

- Select colors and adjust brightness as needed.
- Set a timer for automatic shutdown.

**✓ Eliminates viruses and various bacteria.**

By employing a photocatalytic filter and UV LEDs, it efficiently eliminates viruses and bacteria (98% E. coli, 99% Staphylococcus aureus).

**✓ Equipped with a 13-grade HEPA filter for allergy particle capture.**

- A filter that efficiently removes various allergy triggers.
- Up to 99.9% removal of ultrafine dust with a 13-grade HEPA filter.

**✓ Air quality monitoring within the usage area is at your fingertips.**

- Easily track real-time air quality in your space, including PM2.5, PM10, humidity, temperature, carbon dioxide (CO<sub>2</sub>), and total volatile organic compounds (TVOC), all from your smartphone.

**✓ Equipped with a high-capacity 3,600mAh battery.**

Operates the air purification function for about 5 hours on high-capacity battery at 2nd fan speed

**✓ Enjoy convenience from anywhere, anytime with smart IoT capabilities.**

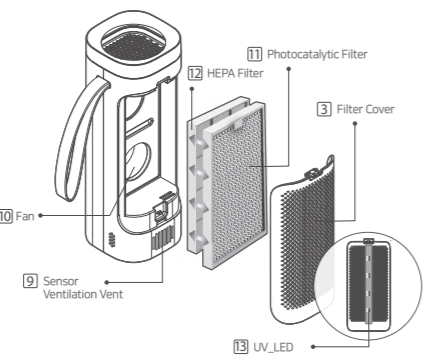
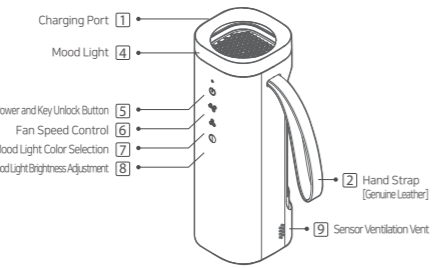
Our IoT wireless server, utilizing Wi-Fi, is hosted in the United States, ensuring global accessibility. It seamlessly switches to Bluetooth in Wi-Fi-deprived locations.

**✓ Designed in Korea, and handcrafted by the people of Korea, a product proudly 'Made in Korea'.**

Crafted in Korea by the finest local designers, a genuine 'Made in Korea' product.

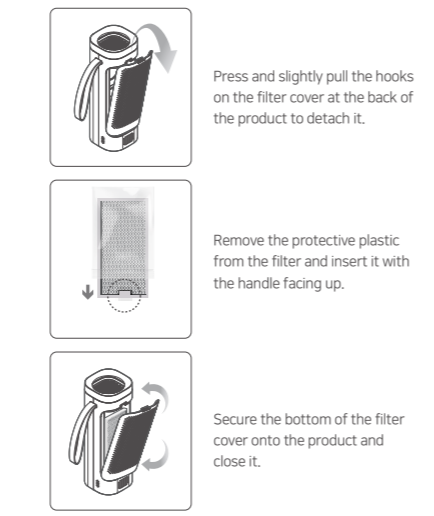
**Product Setup** 2

**Product Components and Functions**



- 1** Charging Port Charge by using the USB-C type charging cable
- 2** Hand Strap [Genuine Leather] Hand Strap with Genuine Leather
- 3** Filter Cover Filter Cover Opens for Filter Detachment Can be used as a bedside or nursing light
- 4** Mood Light Long touch for 3 seconds to power ON/OFF. Short touch for key lock/release. Change fan speed for airflow adjustment (low noise, 1, 2, 3, Auto, Off).
- 5** Power Select mood light color (white, red, orange, yellow, green, blue, indigo, purple, Off).
- 6** Fan Speed Control Adjust mood light brightness (3, 2, 1).
- 7** Mood Light Color Selection Fine Dust Sensor Vent
- 8** Mood Light Brightness Adjustment Utilizes High-Performance Low-Noise BLDC Blower Fan
- 9** Sensor Ventilation Vent Utilizes UV light to generate plasma for virus and bacteria disinfection.
- 10** Fan HEPA Filter with 13-Grade Allergen Filtration Control ON/OFF only via the dedicated app (Initially set to OFF)
- 11** Photocatalytic Filter
- 12** HEPA Filter
- 13** UV\_LED

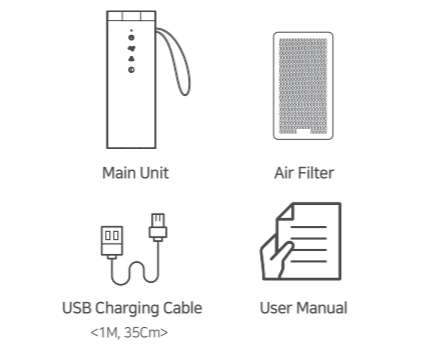
**Filter Installation** 3



**Caution**

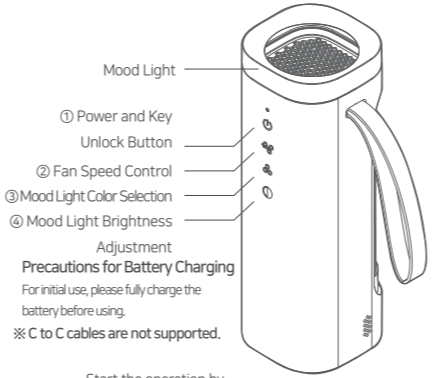
- Before using the product, ensure that you have removed the protective plastic from the filter. Failure to do so can cause product malfunctions.
- When attaching the filter, be mindful of its orientation to prevent W product malfunctions and damage.

**Components**



The charging cable is inside the box under the product.  
- The appearance or components of the product may vary depending on the model.

**How To Use** 4



**Precautions for Battery Charging**  
For initial use, please fully charge the battery before using.  
\* C to C cables are not supported.

Start the operation by pressing and holding Power Button ① for 3 seconds.  
- A long press of the Power Button turns the power on or off, and a short press unlocks the keys.  
\* Important notes  
- If there's no button touch for 10 seconds, all buttons except the Power Button will automatically lock. A short press of the Power Button will unlock the touch buttons.  
- Upon starting the operation, allow 1 minute for sensor stabilization. After sensor stabilization, the app will display air quality status.

Adjust the fan speed by pressing the Fan Speed Control Button ②.  
- Each time you touch the Fan Speed Control Button, it cycles through Low Noise Mode, Level 1, Level 2, and Level 3 in sequence.  
- For AUTO mode, press and hold the button.  
- The initial setting for fan speed is Low Noise Mode.  
- When you change the fan speed, the Mood Lamp will flash once for Level 1, twice for Level 2, and three times for Level 3.

Each time you press the Mood Lamp Button ③, the mood lamp color will cycle through the following sequence: White → Red → Orange → Yellow → Green → Blue → Indigo → Purple → OFF.  
Each time you touch the Brightness Adjustment Button ④, the mood lamp brightness cycles through Level 3 → Level 2 → Level 1 in sequence.  
- The mood lamp can be turned off, allowing the air purification function to operate independently.  
- To turn off the mood lamp, please refer to the description in the previous item (Item 3).

**Mood Light:** When the TVOC, CO<sub>2</sub>, and fine dust levels are in the [Bad/Very Bad] range, it will flash red for about 20 seconds, and then remain on. It will turn off when the values change to [Good].

**LED Status Indicators for the MC3 10**

Operating Status	Color	Indicator Lights
Pairing	Blue	Blinking
In Use	Blue	Lit
Using the Device While Charging	Purple	Lit
Charging	Red	Lit
Charging Complete	Light Off	Off
TVOC, CO <sub>2</sub> , Fine Dust - Bad	Red	After Blinking, Steady On

**Monitoring Air Quality** 5

Through the ZeroWell app, you can perform real-time monitoring of air quality in your living space across four key factors: fine dust, humidity, temperature, and Total Volatile Organic Compounds (TVOC).

**1. Fine Dust**

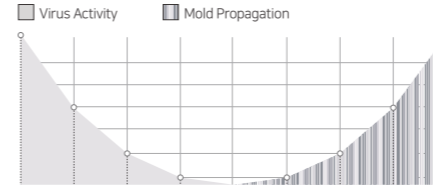
Fine Dust Levels Guidance

PM10	30	80	150
Very good	good	bad	very bad

PM2.5	15	35	75
Very good	good	bad	very bad

**2. Temperature**  
온도 측정 범위 : 여름 상에서 (0 ~ 50°C) 표시

**3. Humidity**  
습도 측정 범위 : 여름 상에서 (0 ~ 100%) 표시



**Optimal Humidity**  
55% - 60% - 65%

When humidity is low: It can exacerbate atopic dermatitis and trigger respiratory infections like the flu and the common cold.  
When humidity is high: It fosters dust mite and mold growth and boosts the release of harmful chemicals.

**5. Carbon Dioxide (CO<sub>2</sub>)**  
Carbon dioxide concentration serves as a crucial indicator for assessing indoor air quality. Exceeding the recommended levels can be detrimental to human health, highlighting the need for adequate ventilation.



**5. Total Volatile Organic Compounds (TVOC)**

- TVOC (Total Volatile Organic Compounds) refers to hydrocarbon compounds found in the atmosphere that can evaporate, emitting unpleasant odors and ozone. These volatile substances, in the form of gases, can disrupt the nervous system when exposed through skin contact or inhalation. Compounds such as benzene, formaldehyde, toluene, xylene, ethylene, styrene, and acetaldehyde are included in this category.  
- The term "volatile" signifies that these are chemical substances that enter the body daily through the air we breathe, and "organic" indicates their carbon-based nature.  
- Prolonged exposure to Total Volatile Organic Compounds (TVOC) can lead to cancer and other chronic illnesses. Therefore, it is essential to be particularly cautious about TVOC exposure.

측정범위

0	100	200	300	400
Very good	good	normally	bad	very bad

**How to Use IoT Features** 6

Installing the ZeroWell IoT app on your smartphone enhances the convenience of using the product

**How to Install the Zerowell Dedicated App**

Search for 'Zerowell' on your smartphone's Google Play Store or Apple App Store, and then proceed with the installation. For detailed usage instructions, please consult the application's user guide.

**How to Pair**

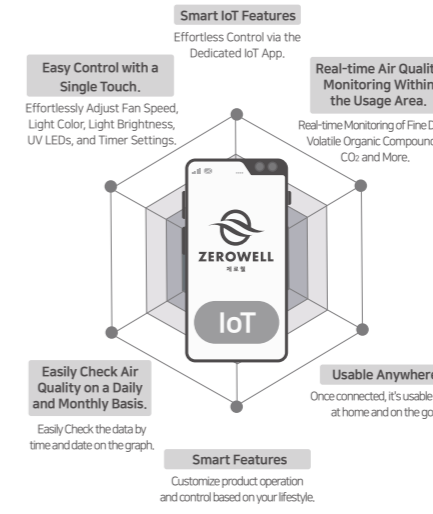
Pairing is the process of registering devices with each other using Wi-Fi. Once pairing is complete, you won't need to repeat it.  
\* When initially connecting to Wi-Fi, be sure to connect to the 2.4GHz band.  
\* For the initial connection, make sure the product is powered off.

- 1 Simultaneously press and hold the + button to reset.
- 2 In the ZeroWell app, choose 'Add Device.'
- 3 Select 'Auto Scan.'
- 4 Choose the detected product.

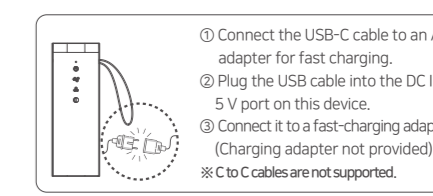
Connection Precautions  
- During the initial setup, place the router, product, and smartphone close together for pairing.  
- If pairing is not successful, try rebooting the router and reconnecting.  
\* 참고 : 완전 망전 후에는 기기와 휴대용 패어링이 취소됩니다.  
충전 후 제품의 + 버튼을 동시에 눌러 초기화(무드램프가 점멸) 시킨 후 휴대용과 다시 페어링 해주세요.

**Zerowell IoT Features**

Use the following functions with the smartphone connected to the product.



**Charging the Battery and Safety Precautions** 7



- The fast charging time is approximately 4 hours.  
- Operating time is roughly 5 hours on the 2nd fan speed when the product is fully charged.  
- Operating time is roughly 5 hours on the 2nd fan speed when the product is fully charged.  
- In cold environments, operating time may significantly decrease, or the product may not function based on the charge level.  
- As batteries are consumable, their usage time naturally decreases over time.  
- If usage time drops by more than half compared to the time of purchase, please contact Zerowell Customer Service. (Paid replacement after the warranty period)  
- When first using the product, the battery may not be fully charged, so be sure to charge it completely before use.

**✓ Checking the Battery Charging Status**

○ battery charging begins when the AC adapter connected to the power outlet is connected to this device.  
○ Verify the charging status using the power indicator light.  
○ The device will automatically stop when the battery level drops below 15% to protect the battery.  
○ The battery level cannot be checked while charging.

○ You can check the battery status in the Zerowell app (the actual battery level may vary)."

**! Precautions**

- An AC adapter must be purchased separately, and it's crucial to use a certified AC adapter (5V, 2A).
- The use of unauthorized chargers can result in malfunctions and variable charging times.
- When connected to a car's USB port or a PC USB port, the lower current can lead to slower charging or the product not functioning, and charging may be limited depending on the vehicle.
- Charging may be automatically stopped for safety if the battery temperature becomes too high or too low.
- Do not leave the product in direct sunlight near a glass window or inside a car where the internal temperature can rise significantly due to direct sunlight. Also, avoid placing the product on blankets, heaters, or carpets for extended periods.
- Overheating can cause exterior deformations, malfunctions, and even battery explosions.
- If you plan to use the product after extended storage, make sure to fully charge it before use.
- When requesting service for battery-related issues, please include the product charger.

\* 참고 : 기기의 주위 온도가 45°C 이상 되면 제품 보호를 위해 전원이 자동으로 차단됩니다.



This device complies with Part 15 of the FCC Rules. Operation is subject to the following two

conditions:

(1) This device may not cause harmful interference, and (2) This device must accept any interference received, including interference that may cause undesired operation.

NOTE: This product has been tested and found to comply with the limits for a Class B digital device, pursuant to Part 15 of the FCC Rules. These limits are designed to provide reasonable protection against harmful interference in a residential installation. This equipment generates, uses and can radiate radio frequency energy and, if not installed and used in accordance with the instructions, may cause harmful interference to radio communications. However, there is no guarantee that interference will not occur in a particular installation. If this equipment does cause harmful interference to radio or television reception, which can be determined by turning the equipment off and on, the user is encouraged to try to correct the interference by one or more of the following measures: —Reorient or relocate the receiving antenna. —Increase the separation between the equipment and receiver. —Connect the equipment to an outlet on a circuit different from that to which the receiver is connected. —Consult the dealer or an experienced radio/TV technician for help.

[47 CFR 15.21] Pursuant to Section 15.21 of the FCC rules, changes or modifications to a Product by the user that are not expressly approved by the party responsible for compliance could void the user's authority to operate the equipment. The device meets the FCC Radio Frequency Emission Guidelines. Information on the product is on file with the FCC and can be found by inputting such Product's FCC ID (which can be found on the device) into the FCC ID Search form available at <https://www.fcc.gov/oet/ea/fccid>.

**Product : Air Doctor babysafe**

**Model : ZWA-MC310W**

**Input : DC 5.0V (Battery)**

**FCC ID : 2BC63-ZWA-MC310W**

**included contains FCC ID : 2ANDL-WBR3**

**Frequency : 2 402 ~ 2 480 MHz (BLE) / 2 412 ~ 2 462 MHz (WLAN 2G)**