

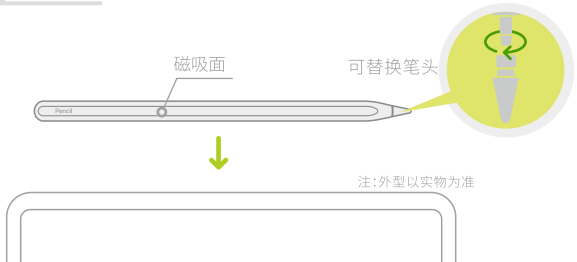
Pencil

使用说明书



使用前请仔细阅读本说明书,并妥善保管

1. 产品图示:



2. 产品参数:

材质: 塑胶材质
防误触功能: 有
输入: 4.2V/0.06A
压力倾斜功能: 支持
笔头: 可替换笔头

3. 适用机型:

1. iPad Pro 12.9英寸 (第三代、第四代、第五代)
2. iPad Pro 11英寸 (第一代、第二代、第三代)
3. iPad Air (第四代)
4. iPad Mini (第六代)

备注: 请参考iPad背面确认产品型号。
该产品适配以上型号
不在上述型号列表的iPad型号, 有可能不适配

4. 产品特点:

1. 时尚简约风格, 塑胶材质外观UV喷漆, 低调奢华, 坚固耐用;
2. 可更换笔头设计, 无惧磨损! 新升级倾斜加粗功能, 笔头倾斜面积越大, 线条越粗;
3. 笔尖采用特殊材料, 精工研磨, 书写光滑流畅, 不损伤屏幕;

4. 产品兼容ipad 2018款之后型号 (具体机型查看产品参数) 可书写、绘画、记录;
5. 支持无线充电, 带倾斜压感;
6. 3分钟智能待机, 30分钟智能休眠, 电池8小时续航, 平板可看电量, 充电带闪电标。

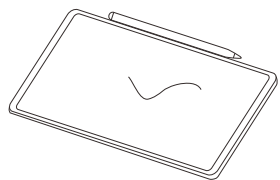
5. 使用说明:

1. ipad平板的版本不低于12.2;
2. 打开设置-备忘录-关闭Pencil涂鸦功能;
3. 打开设置-蓝牙, 关闭蓝牙原原苹果笔的连接。
(按以上设置完毕, 即可正常使用本产品。)

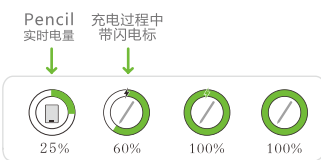


6. 如何使用:

1. 磁铁吸附iPad开机 在iPad上吸附后进行无线充电; 使用过程中3分钟后自动待机 30分钟自动休眠; 休眠后蓝牙自动断开 磁吸后重新开机; 吸附iPad上取下 2秒后退出充电模式才能书写。
(首次使用建议重启iPad)



2. 蓝牙连接后可在iPad上查看Pencil实时电量; Pencil在iPad上充电过程中有带闪电的图标。

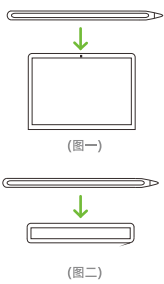


3. 更易换笔头设计, 无需担心笔头磨损! (轻拧笔头即可轻松拆卸/安装)



7. 充电说明:

1. 选择适配型号iPad充电
把 Pencil 吸附在平板上无线充电
2. 选择专用充电盒充电
把 Pencil 吸附在充电盒里进行无线充电
3. 若出现充电速度比较慢建议重启iPad



CE RoHS PS E FC 5 6 7 8 9 10 11 12 13 14 15 16 17 18 19 20 21 22 23 24 25 26 27 28 29 30 31 32 33 34 35 36 37 38 39 40 41 42 43 44 45 46 47 48 49 50 51 52 53 54 55 56 57 58 59 60 61 62 63 64 65 66 67 68 69 70 71 72 73 74 75 76 77 78 79 80 81 82 83 84 85 86 87 88 89 90 91 92 93 94 95 96 97 98 99 100

© 2020 Pads Pencil Inc., All rights reserved. Printes in China AM056-04008-A

Pencil

合格证



尊敬的用户:
您好!
非常感谢您使用我们的产品, 为您提供优质的产品和售后服务, 充分保护您的消费权益是我们的应尽的义务。因此, 我公司根据国家有关规定, 实施以下标准保修服务条款。
一、保修服务: 用户可到当地售后服务中心享受我公司提供的自购买之日起15天包换服务。
二、若有以下情况造成的损害, 恕不提供维修服务:
1. 产品原序列号标签有涂改、替换、损毁等现象, 或产品没有序列号、质保凭证上的产品型号、编号与产品不相符的;

2. 产品超出我们的质保期限;
 3. 非正常使用产品导致外表破损;
 4. 外包装部分及内附的赠品, 销售人员承诺的产品之外的服务及附加的配置和赠品;
 5. 不当储存: 如产品长时间暴露在非正常工作温度、湿度环境中造成的性能损害;
 6. 未按操作说明, 人为滥用误用、擅自改装造成产品损坏。
- 三、请妥善保管此保修卡及有效购买凭证, 作为保修服务必备证件, 请勿擅自修改内容, 否则视为作废。
四、本公司保留对该产品售后服务条例的解释权。

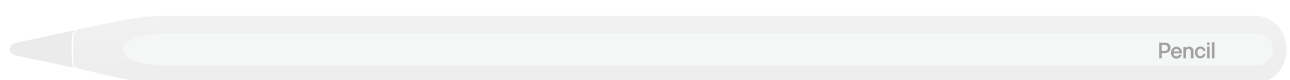
保修卡

为了您的权益, 请您认真填写, 并妥善保管, 作为维修前的凭证:

经销商信息:	
产品类型:	经销商名称:
联系电话:	销售日期:
用户信息:	
用户姓名:	联系地址:
通讯地址:	邮箱:

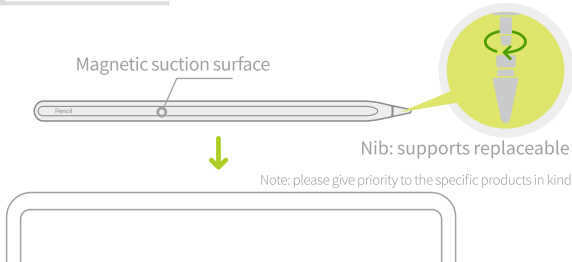
Pencil

Instruction Manual



This stylus is the first brand on the market that supports magnetic suction charging except the original Apple pencil. Due to the strong technical difficulty, please be sure to read the manual before using it, so as not to make it unusable

1. Product Details:



2. Product Parameters:

Product model: magnetic suction charging stylus
Material: special plastic
Input: 4.2v/0.06a
Nib: supports replaceable

3. Adaptive models:

1. iPad Pro 12.9 inches (3rd, 4th and 5th generation)
2. iPad Pro 11 inches (first, second and third generation)
3. iPad air (4th and 5th generation)
4. iPad Mini (6th generation)

Note: please refer to the back of iPad to confirm the product model. This product is suitable for the above models. For iPad models that are not in the above model list, please choose our 9th generation stylus.

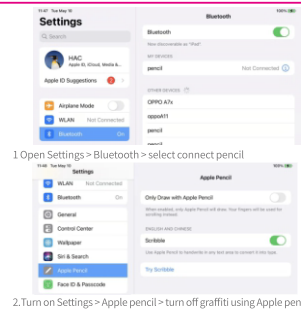
4. Adaptive models:

1. Simple and fashionable, plastic material, UV paint appearance, low-key luxury, solid and durable
2. Replaceable NIB design, not afraid of wear (NIB replaceable)
3. Polished pure copper nib can write smoothly without damaging the screen
4. This product is only applicable to iPad

from 2018 (please refer to the table of applicable models). It supports writing, painting, recording, etc., supports wireless charging, has inclined pressure sense, and has the function of preventing false touch. 5. 3 minutes of intelligent standby, 30 minutes of automatic sleep, 8 hours of battery endurance, and the tablet can watch the power with Charging lightning animation.

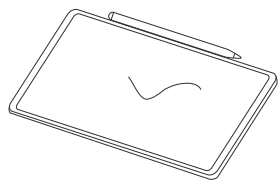
5. Adaptive models:

- It is recommended to restart the iPad for the first time.
 - Please ensure that the iPad system version is 12.2 or above
 - Turn on settings -- memo -- turn off graffiti option
 - Turn on settings - Bluetooth - turn off the connection between Bluetooth and the original Apple pencil
- Note: in order to achieve the best charging effect of magnetic suction, it is recommended to use it with the protective sleeve of our store (due to the different quality of the third-party protective sleeve, it may cause slow charging)

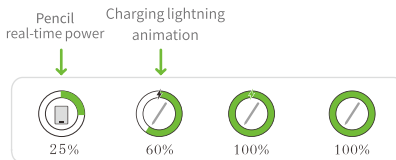


6. How to use

1. Turn on the stylus by adsorbing iPad and charge it wirelessly after it is adsorbed on the iPad. It will automatically stand by after 5 minutes of standstill during use and automatically sleep after 30 minutes. Bluetooth will automatically disconnect after sleep, restart after magnetic suction, adsorb it on the iPad, and enter the writing mode after removing it again for about 2 seconds (it is recommended to restart the iPad for the first time)



1. After Bluetooth connection, you can check the real-time power of pencil on the iPad. Pencil has an icon with lightning during charging on the iPad

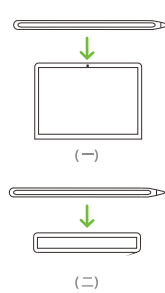


2. The nib can be replaced without worrying about the wear of the NIB (rotate the nib slightly to remove the NIB). It is recommended to replace the official NIB of our store first to improve the writing experience.



7. Charging Guide

1. Select the appropriate model for iPad charging
Adsorb pencil on the tablet for wireless charging
2. If the charging speed is slow, it is recommended to restart the iPad
3. iPad bare machine charging for about 1.5 hours
Charge with protective sleeve for about 2 hours



CE RoHS PS E FC 5 6 7 8 9 10 11 12 13 14 15 16 17 18 19 20 21 22 23 24 25 26 27 28 29 30 31 32 33 34 35 36 37 38 39 40 41 42 43 44 45 46 47 48 49 50 51 52 53 54 55 56 57 58 59 60 61 62 63 64 65 66 67 68 69 70 71 72 73 74 75 76 77 78 79 80 81 82 83 84 85 86 87 88 89 90 91 92 93 94 95 96 97 98 99 100

© 2020 Pads Pencil Inc., All rights reserved. Pencil, Pads Pencil, and Table Pad are trademarks of Pads Pencil Inc registered in the U.S. and other countries. Printes in China AM056-04008-A

Pencil

Product Certification



Dear Customer:
Thank you using Ours products. We implement the following standard warranty service.
I. Warranty Service user can enjoy replacement service of the products bought from our company within 15days from the date of Purchase in the local service center (Noted : The product performance is damaged but the outlook of the product and accessories in intact, and All products are provide with after-sales service) if there is no local service center , users can send the product to the authorized dealer for warranty service
II. We don't provide any warranty service for the following causes :
1. The original serial number label on the product is altered , replaced and damaged , or the product does not have serial number , or the product model and serial number on product warranty certification do not much those of original product.

2. Product exceed the warranty period specified
3. Appearance of product is damaged because of abnormal usage
4. Improper storage: If the product is exposed to the humidity and temperature different from normal working environment , it's performance may be damaged .
5. keep this card valid proof of purchase property as a warranty service necessary certificates, please do not modify warranty card and shopping voucher , otherwise it will be considered as void
6. The company reserves the final interpretation of product after-service regulation

Warranty Card

For your rights and interests , please fill in carefully this card:

Dealers information :	
Product type :	Dealer Name :
Tel :	Purchase Date :
Users Information:	
Users Name :	TEL :
Postal Address :	Email:

FCC statement

This device complies with Part 15 of the FCC rules. Operation is subject to the following two conditions:
1) This device may not cause interference.
2) This device must accept any interference, including interference that may cause undesired operation of the device.
Note: This equipment has been tested and found to comply with the limits for a Class B digital device, pursuant to part 15 of the FCC Rules. These limits are designed to provide reasonable protection against harmful interference in a residential installation. This equipment generates uses and can radiate radio frequency energy and, if not installed and used in accordance with the

instructions, may cause harmful interference to radio communications. However, there is no guarantee that interference will not occur in particular installation. If this equipment does cause harmful interference to radio or television reception, which can be determined by turning the equipment off and on, the user is encouraged to try to correct the interference by one or more of the following measures:
--Reorient or relocate the receiving antenna.
--Increase the separation between the equipment and receiver.
--Connect the equipment into an outlet on a circuit different from that to which the receiver is connected.
--Consult the dealer or an experienced radio/TV

technician for help.
Changes or modifications not expressly approved by the party responsible for compliance could void the user's authority to operate the equipment.
FCC Radiation Exposure Statement
This device complies with FCC RF radiation exposure limits set forth for an uncontrolled environment. This transmitter must not be co-located or operating in conjunction with any other antenna or transmitter.