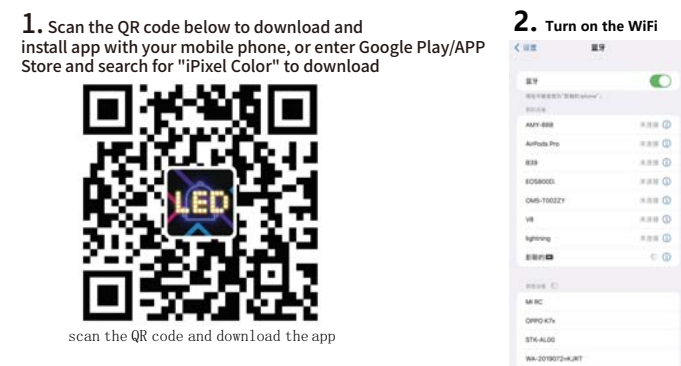


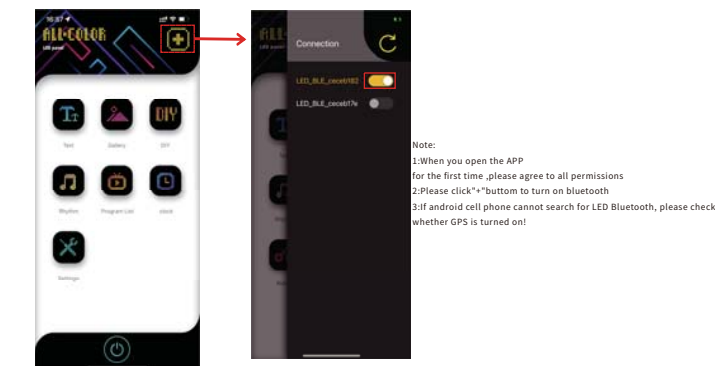


1. Scan the code to download the APP



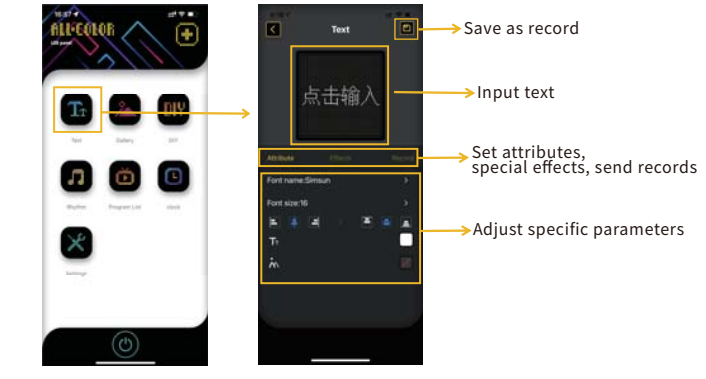
1

2. Connect the device:



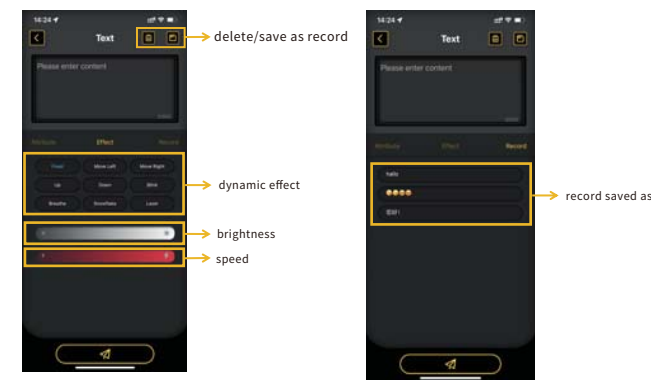
2

3. Text editor



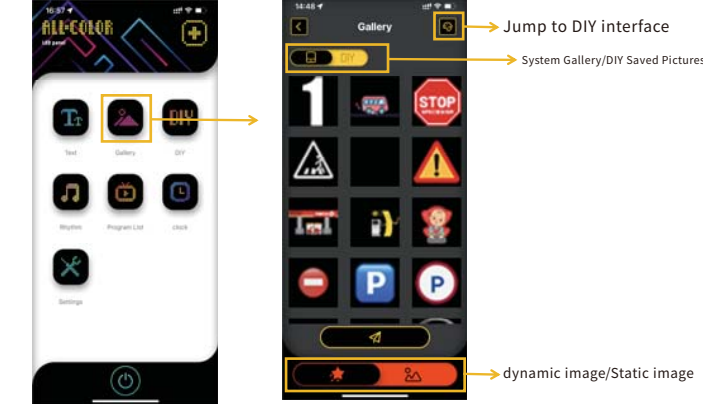
3

4. special effects/recording



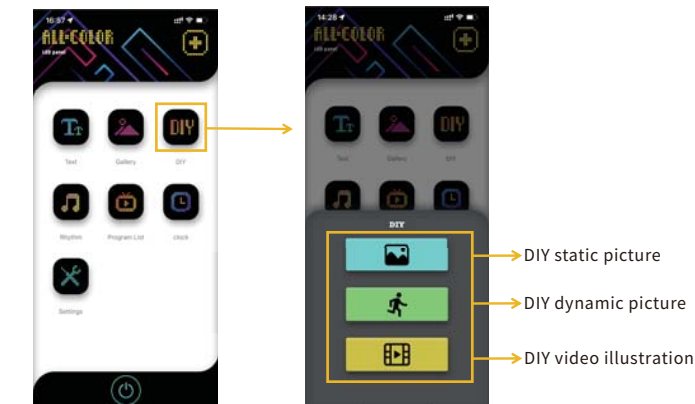
4

5. Gallery:



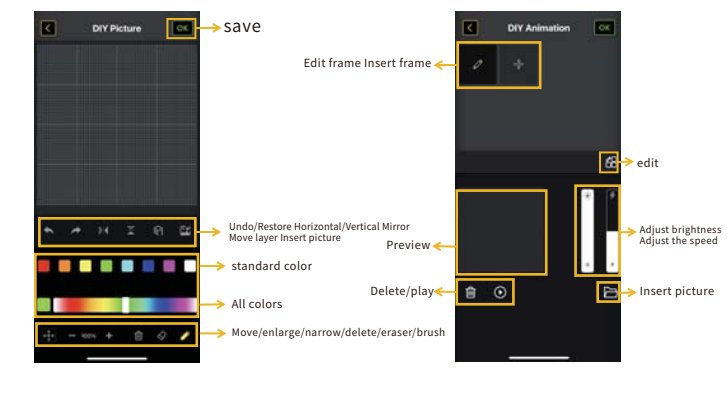
5

6. DIY:



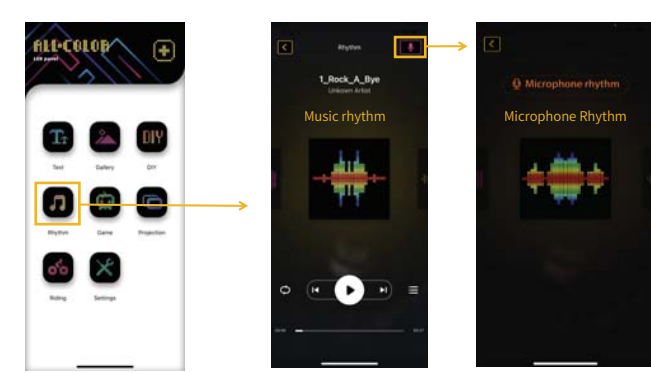
6

7. DIY static picture/dynamic picture:



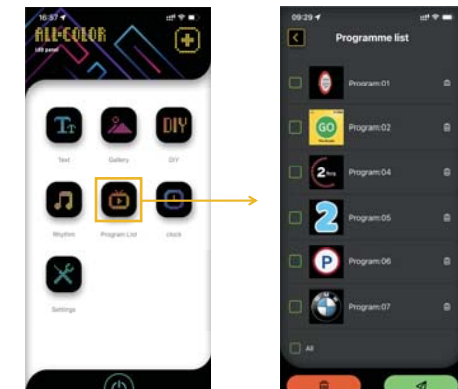
7

8. Rhythm:



8

9. Programme list:



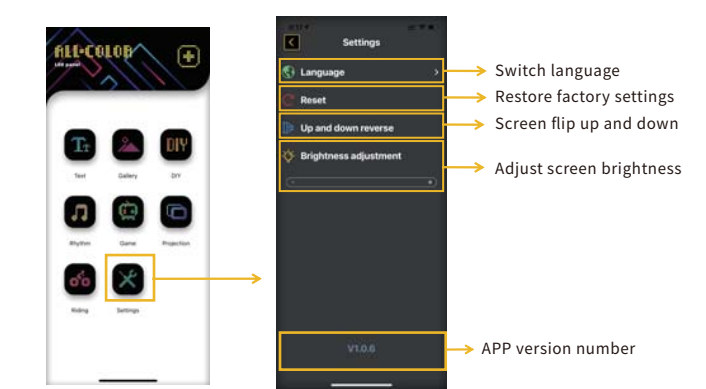
9

10. clock:



10

11. Settings:



11

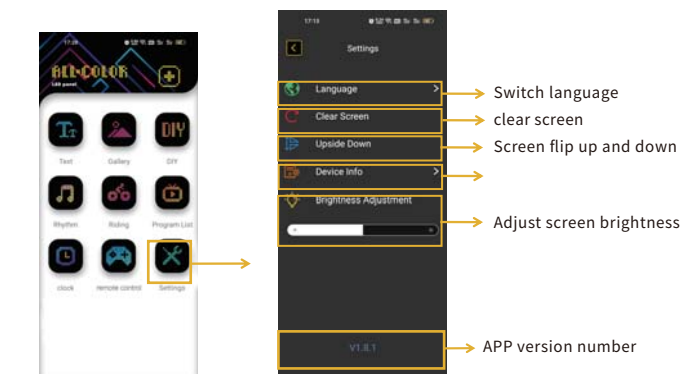
12. installation method:



Tear off the transparent sticker of the suction cup, clean the attached part, keep it dry, and wipe the dust on the surface of the attached part. Align the position to be pasted, press the suction cup moderately for 5-8s, and break off the buckle to fix it.

12

13. Settings:



13

14. Product parameters:

Material: ABS+Silicone+Aluminum
 Product color: black
 Screen pixel: 32*32
 Number of lamp beads: 1024
 Connection method: Bluetooth
 Power supply mode: USB
 Current and voltage: 5V/2A
 Screen size: 131*128*15mm
 Product size: 210*131mm
 Lamp bead model: 2020 lamp beads/RGB

14

15. Product accessories:

One APP smart screen, one USB data cable, one manual, one hexagon nut



15

Warning:

This device complies with Part 15 of the FCC Rules. Operation is subject to the following two conditions: (1) this device may not cause harmful interference, and (2) this device must accept any interference received, including interference that may cause undesired operation.

Changes or modifications not expressly approved by the party responsible for compliance could void the user's authority to operate the equipment.

NOTE: This equipment has been tested and found to comply with the limits for a Class B digital device, pursuant to Part 15 of the FCC Rules. These limits are designed to provide reasonable protection against harmful interference in a residential installation. This equipment generates uses and can radiate radio frequency energy and, if not installed and used in accordance with the instructions, may cause harmful interference to radio communications. However, there is no guarantee that interference will not occur in a particular installation. If this equipment does cause harmful interference to radio or television reception, which can be determined by turning the equipment off and on, the user is encouraged to try to correct the interference by one or more of the following measures:

- Reorient or relocate the receiving antenna.
- Increase the separation between the equipment and receiver.
- Connect the equipment into an outlet on a circuit different from that to which the receiver is connected.
- Consult the dealer or an experienced radio/TV technician for help.

NOTE: This device and its antenna(s) must not be co-located or operation in conjunction with any other antenna or transmitter

RF Exposure Statement

To maintain compliance with FCC's RF Exposure guidelines, This equipment should be installed and operated with minimum distance of 20cm the radiator your body. This device and its antenna(s) must not be co-located or operation in conjunction with any other antenna or transmitter