



Kieslect Calling Watch Kr2 User Manual FCC ID: 2BC3S-K12



Get the manual
in more languages

Notes:

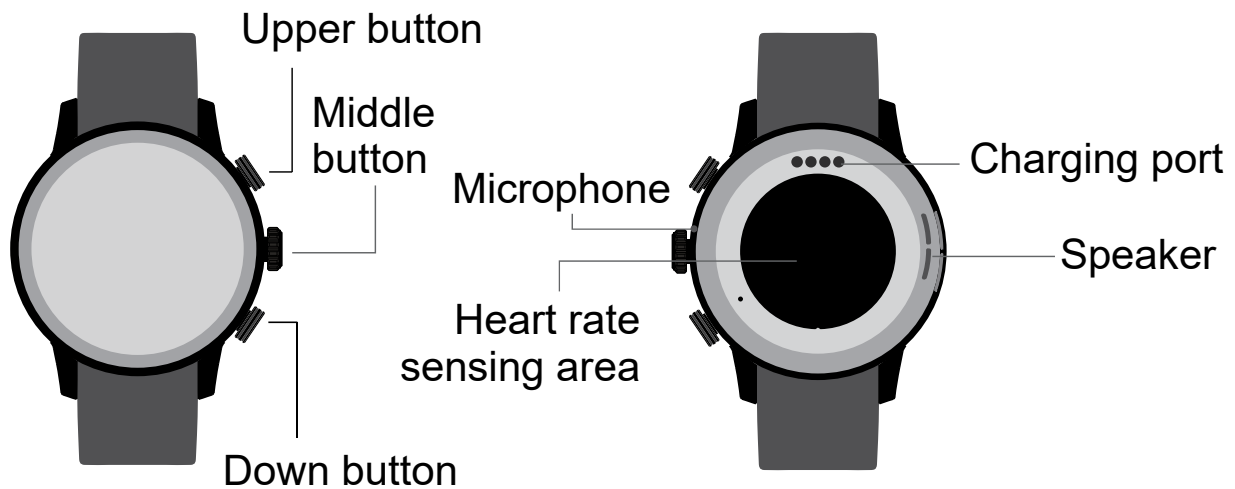
1.1 The company reserves the right to modify the contents of this manual without any further notification. It is normal that some functions may vary in certain versions of software.

1.2 Please refer to this manual before using the product.

1.3 Before using the product you need to connect the APP synchronization time and set your personal information.

1.4 This product supports IP68 rank waterproof, not suitable for deep sea diving, hot water tea and other corrosive liquids are destructive to the watch, and will not be able to enjoy the product warranty and free maintenance services.

01 Appearance and charge



Button functions

Item	Once-press	Double-press	Long-press	Rotate
Upper button	Light screen/ Lock screen/ Return home	/	Power on/ Power off	/
Middle button	Menu/ Back	/	Restart (Long press for 12S)	Page flipping/ volume adjustment
Down button	custom (Default Sport Mode)	Voice Assistant	SOS	/

Tips:

- 1.Charging no less than 2 hours before using. Please use the correct charging adapters which are 5V 0.5A above.
2. If the watch cannot be turned on after being placed for a long time, you need to wipe the charging contacts of the charging cable clean when using it again to avoid sweat or water residue.

02 How to wear

Please wear the device on your wrist correctly, about one finger from the carpal and adjust it to comfortable position. Below pictures as reference.



Tip: Incorrect wear can result in inaccurate health test data.

03 Download & connect to APP

03.1 Scan QR code

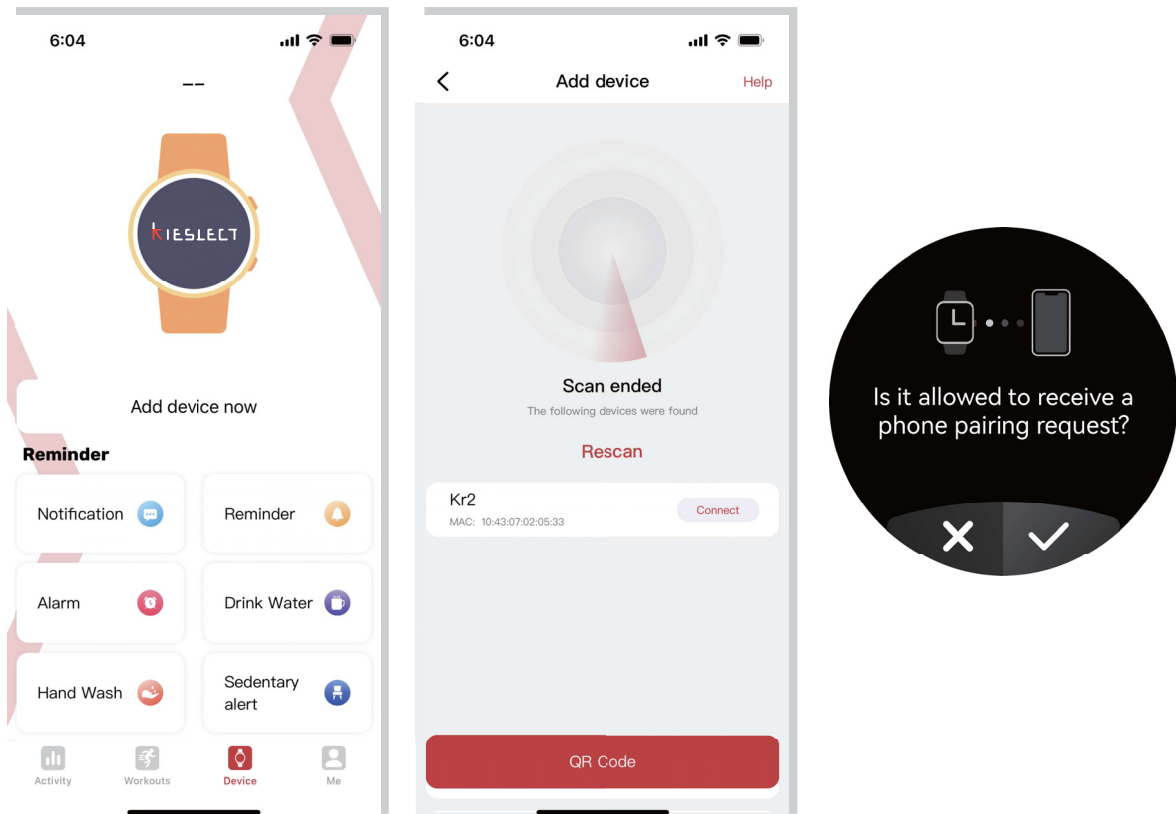


03.2 Install the “Kieslect” APP

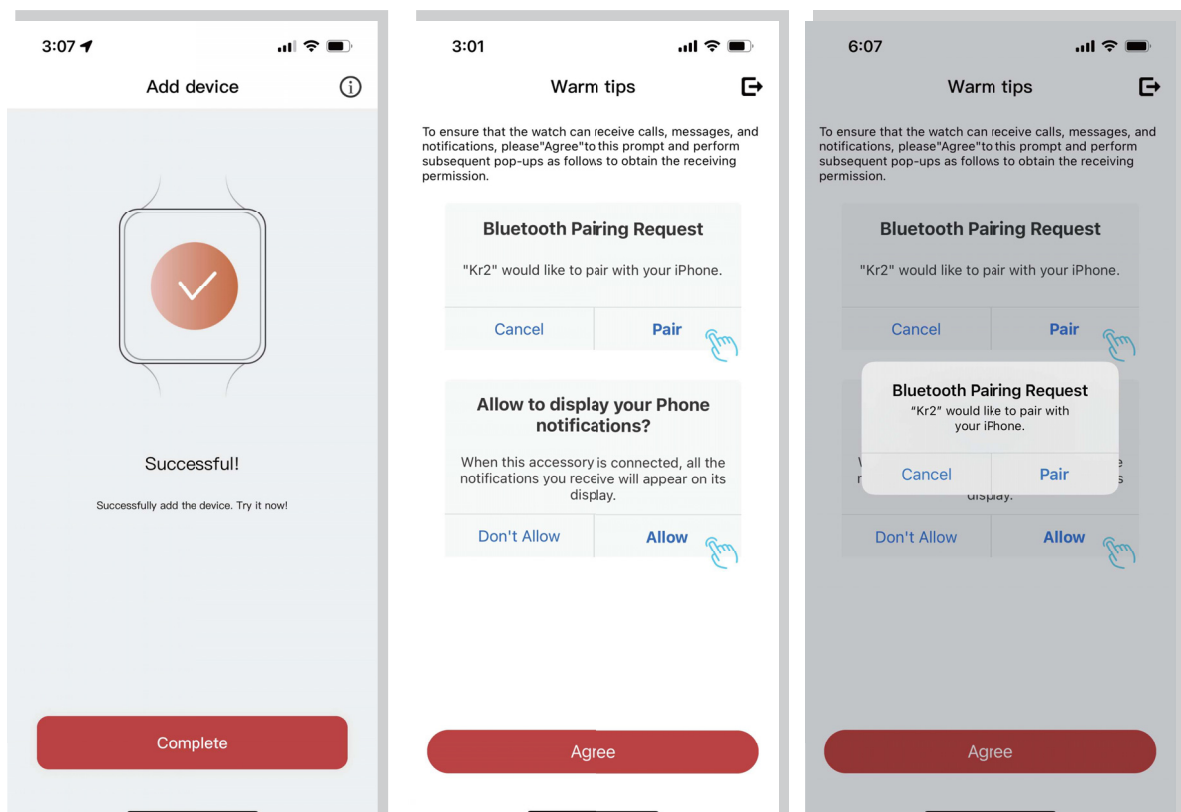


Kieslect

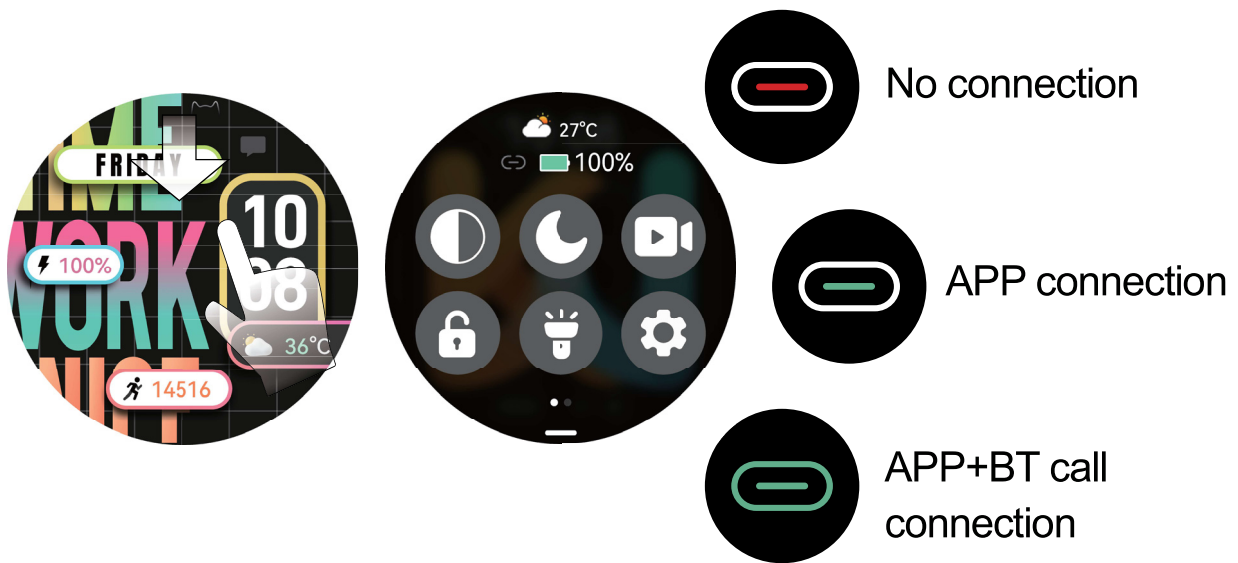
03.3 Open App, Click “Add device now” -Click "Kr2" to connect - then Click “ ✓ ” on the watch.



03.4 Click “Agree” to work with Audio Bluetooth.



03.5 Check the connection status.



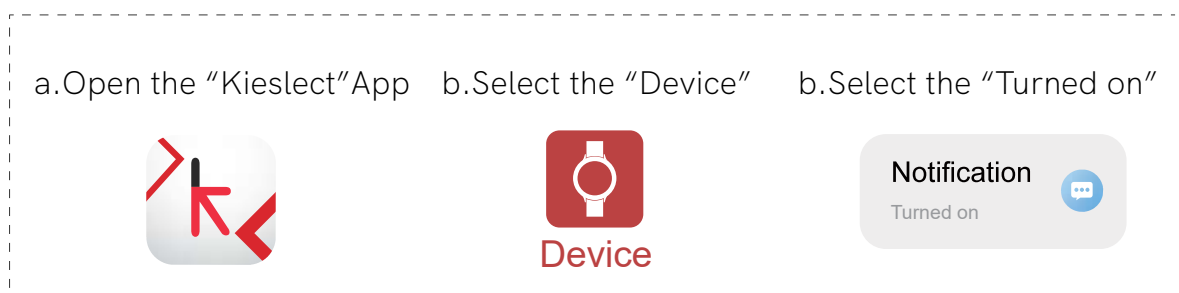
*Using BT call and playing music feature on the watch must be successfully connected to audio Bluetooth.

For further information about the settings and usage of watches, please visit: <https://www.kieslect.com/guide/user-manual/>

Tips:

- (1) Please upgrade the App to latest version to get a better experience.
- (2) Android 5.0 and iOS 9.0 or above system are compatible with the App.
- (3) For the first time connection with android, "Permissions" reminder will pop-up, please follow up the guidance and allow permissions to ensure all functions working properly.
- (4) To connect successfully, please turn on mobile phone's Bluetooth, GPS and network.
- (5) If the device cannot be searched or connected during use, please reset or turn off the watch to try again.
- (6) You can't turn off your Watch while it's charging. To turn off your Watch, first disconnect it from the charger.
- (7) If you need to use the functions such as message push, make sure that the App switch is on.

The specific operations are as follows.



04 Parameters

Bluetooth:5.2

Screen Size: 1.43"

Waterproof:IP68

Net Weight:39g

Battery Type: Li-ion

Size: ϕ 46.40*11.65mm

Charging Voltage:3.8V

Battery Capacity:360mAh

Working Temperature:-20°C~60°C

05 Warranty

1.One year warranty for default hardware defectives, half of year for battery and charging cable.

2.Below reasons cause to defectives are not included in free warranty service:

(1)Personal assemble or disassemble.

(2) Falling damage during use.

(3)All man-made damage or due to the third party's fault, improper use(Such as:water in the smart watch, external force shattering,scratch during use etc.)

3.Please provide a warranty card with the details filled when request for after selling service.

4.Please contact with direct dealers for warranty service.

5.Please note all functions of the product are based on physical objects

Warranty Certificate			
Client Info			
Product Type		Vendor	(Stamp)
Client Name		Contact Info	
Vendor's Contact		Purchase Date	
Product SN Code			
Client's Address			
Vendor's Address			
Warranty Record			
Date	Problems	Diagnosis	More Info

Contact us: service@kieslect.com

IEC/EN 62133-2:2017

AnnexC(informative)

Recommendations to the end-users

The following represents a typical but non-exhaustive, list of good advice to be provided by the equipment manufacturer to the end-user.

- a) Do not dismantle open or shred secondary cells or batteries.
- b) Keep batteries out of the reach of children.
- c) Battery usage by children should be supervised. Especially keep small batteries out of reach of small children.
- d) Seek medical advice immediately if a cell or a battery has been swallowed.
- e) Do not expose cells or batteries to heat or fire. Avoid storage indirect sunlight.
- f) Do not short-circuit a cell or a battery. Do not store cells or batteries haphazardly in a box or drawer where they may short-circuit each other or be short-circuited by other metal objects.
- g) In the event of a cell leaking, do not allow the liquid to come in contact with the skin or eyes. If contact has been made, wash the affected area with copious amounts of water and seek medical advice.
- h) Do not use any charger other than that specifically provided for use with the equipment.
- i) Do not use any cell or battery which is not designed for use with the equipment.
- j) Always purchase the battery recommended by the device manufacturer for the equipment.
- k) Keep cells and batteries clean and dry.

- l) Secondary cells and batteries need to be charged before use. Always use the correct charger and refer to the manufacturer's instructions or equipment manual for proper charging instructions.
- m) Do not leave a battery on prolonged charge when not in use.
- n) After extended periods of storage, it may be necessary to charge and discharge the cells or batteries several times to obtain maximum performance.
- o) Retain the original product literature for future reference.
- p) Use the cell or battery only in the application for which it was intended.

Note: This equipment has been tested and found to comply with the limits for a Class B digital device, pursuant to part 15 of the FCC Rules. These limits are designed to provide reasonable protection against harmful interference in a residential installation. This equipment generates, uses and can radiate radio frequency energy and, if not installed and used in accordance with the instructions, may cause harmful interference to radio communications. However, there is no guarantee that interference will not occur in a particular installation. If this equipment does cause harmful interference to radio or television reception, which can be determined by turning the equipment off and on, the user is encouraged to try to correct the interference by one or more of the following measures

- Reorient or relocate the receiving antenna.
- Increase the separation between the equipment and receiver.
- Connect the equipment into an outlet on a circuit different from that to which the receiver is connected.
- Consult the dealer or an experienced radio/TV technician for help.

Any Changes or modifications not expressly approved by the party responsible for compliance could void the user's authority to operate the equipment.

This device complies with part 15 of the FCC Rules. Operation is subject to the following two conditions: (1) This device may not cause harmful interference, and (2) this device must accept any interference received, including interference that may cause undesired operation.

FCC Radiation Exposure Statement:

This equipment complies with FCC radiation exposure limits set forth for an uncontrolled environment. This transmitter must not be co-located or operating in conjunction with any other antenna or transmitter.