

PROCELL[®] InSite

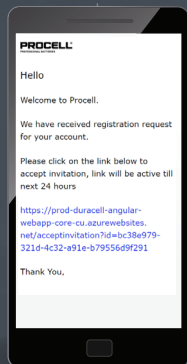
QUICK-START GUIDE

Model #: 3242349-KABALOCK

Product name: Kaba Lock Module



Ensure floor and room are assigned to the location before beginning the install process.

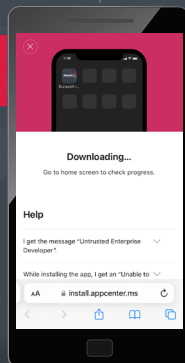


01

Create your PROCELL[®]
InSite account.

02

Download the PROCELL[®]
InSite Mobile App.



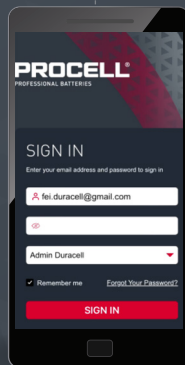
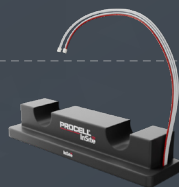
03

Open your device and
replace the batteries.



04

Connect the PROCELL[®]
InSite sensor to your device.

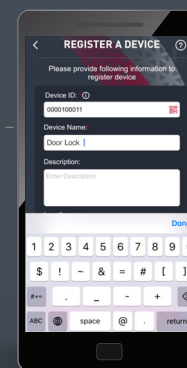
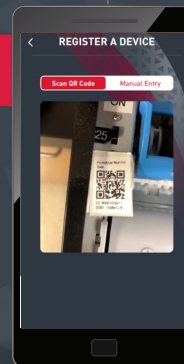


05

Open the app on
your mobile device.

06

Scan the PROCELL[®]
InSite sensor QR code
and enter the Device ID#

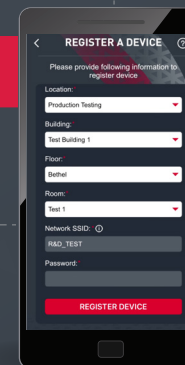


07

Name and describe
your device in the
"Description" field.

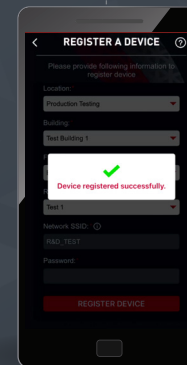
08

Add location data
for your device.



09

Tap 'Register Device'.



10

Safely put away the battery
cables and securely close
your device.

CONGRATULATIONS!
Your device has been
set up and registered!





ADDITIONAL RESOURCES

PROCELL® InSite Quick-Start Video

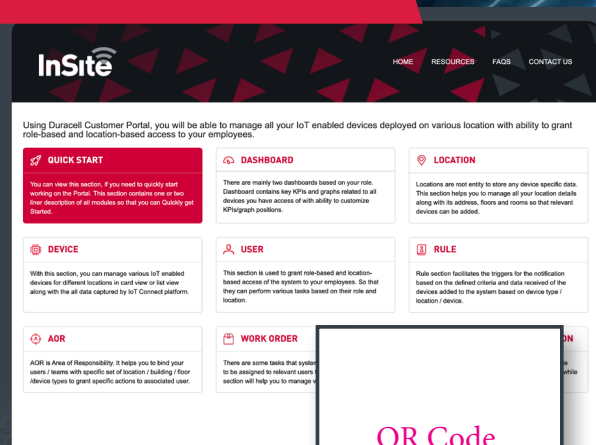
STEP 1

SETUP YOUR ACCOUNT

Follow the instructions in your admin setup email to set up your PROCELL® InSite account.

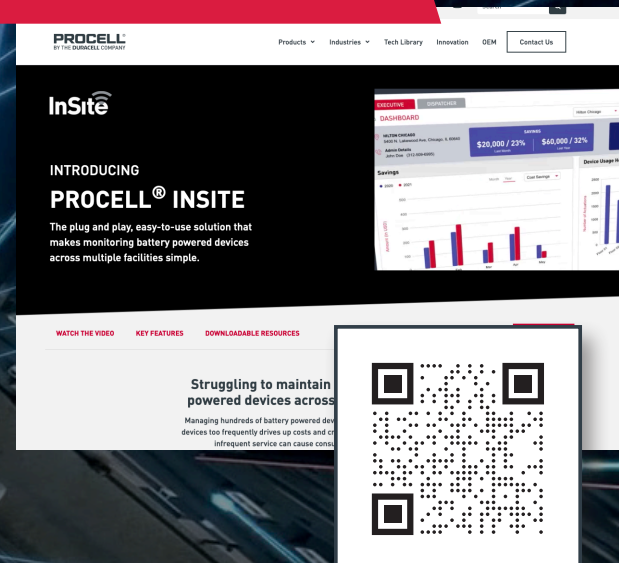
QR Code
to come

PROCELL® InSite User Guide Website



QR Code
to come

PROCELL® InSite Website



IC ID: 31527-KABALOCK ISED RSS warning

This device complies with Innovation, Science and Economic Development Canada Compliance licence-exempt RSS standard (s). Operation is subject to the following two conditions: (1) this device may not cause interference, and (2) this device must accept any interference, including interference that may cause undesired operation of the device.

Le présent appareil est conforme aux CNR d'Innovation, Sciences et Développement économique Canada applicables aux appareils radio exempts de licence. L'exploitation est autorisée aux deux conditions suivantes: (1) l'appareil ne doit pas produire de brouillage, et (2) l'utilisateur de l'appareil doit accepter tout brouillage radioélectrique subi, même si le brouillage est susceptible d'en compromettre le fonctionnement.

ISED Radiation Exposure Statement:

This equipment complies with ISED RF radiation exposure limits set forth for an uncontrolled environment. This transmitter must not be co-located or operating in conjunction with any other antenna or transmitter. This equipment should be installed and operated with minimum distance 20cm between the radiator & your body.

IC exposition aux radiations:

Cet équipement est conforme avec ISED les limites d'exposition aux rayonnements définies pour un contrôlé environnement. Cet émetteur ne doit pas être co-localisés ou fonctionner en conjonction avec une autre antenne ou émetteur. Cet équipement doit être installé et utilisé avec une distance minimale de 20cm entre le radiateur & votre corps.

FCC ID: 2BC3M-KABALOCK FCC statement

This device complies with part 15 of the FCC Rules. Operation is subject to the following two conditions: (1) This device may not cause harmful interference, and (2) this device must accept any interference received, including interference that may cause undesired operation. Any changes or modifications not expressly approved by the party responsible for compliance could void the user's authority to operate the equipment. This equipment has been tested and found to comply with the limits for a Class B digital device, pursuant to part 15 of the FCC Rules. These limits are designed to provide reasonable protection against harmful interference in a residential installation. This equipment generates, uses and can radiate radio frequency energy and, if not installed and used in accordance with the instructions, may cause harmful interference to radio communications. However, there is no guarantee that interference will not occur in a particular installation. If this equipment does cause harmful interference to radio or television reception, which can be determined by turning the equipment off and on, the user is encouraged to try to correct the interference by one or more of the following measures:

- Reorient or relocate the receiving antenna.
- Increase the separation between the equipment and receiver.
- Connect the equipment into an outlet on a circuit different from that to which the receiver is connected.
- Consult the dealer or an experienced radio/TV technician for help.

FCC Radiation Exposure Statement

This equipment complies with FCC radiation exposure limits set forth for an uncontrolled environment. This equipment should be installed and operated with minimum distance 20cm between the radiator & your body.

PROCELL®
BY THE DURACELL COMPANY