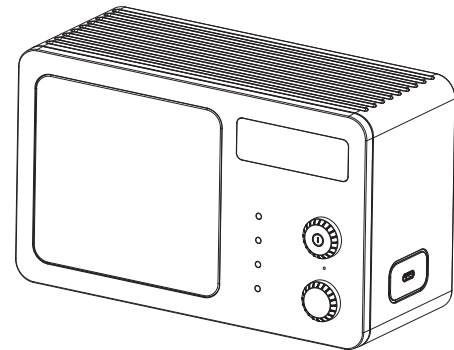
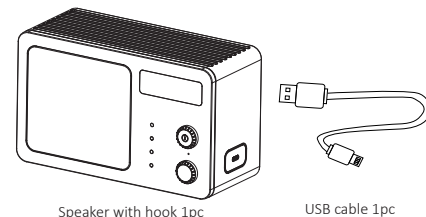


Soundview Wireless Speaker



User Manual

What's in the box



Speaker with hook 1pc

USB cable 1pc



User manual 1pc

Key functions

screen
Song name:
Artist name:

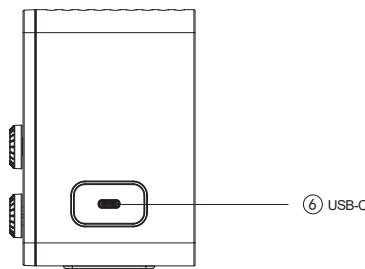
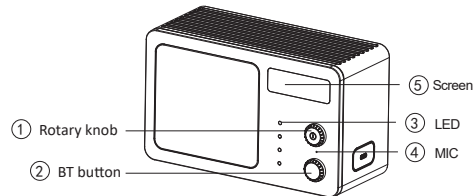
- Bass+ Rotary knob
- TWS
- BT BT button
- Power

- Bass+ Bass mold:white light on Nature mold:white light off
- TWS TWS on:white light flash Tws connected/off:white light on/off
- BT Paring:white light flash Paired:white light on
- Power Charging:white light slow flash and on when fully charged.

- Rotary knob Power on/off:hold 2s Play/pause:one click
Next track:2 click Previous track:3 click
Volume+: clockwise rotation
Volume-: counterclockwise rotation
Answer/end call:single click Reject calls:hold 2s

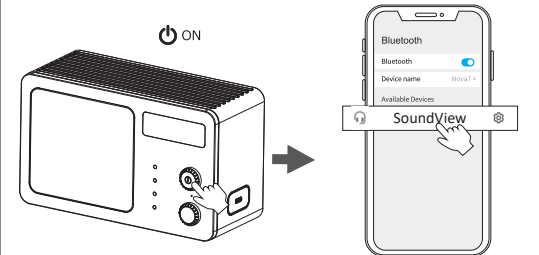
- BT button Bass mold:One click Siri:2 click
Paring mold:hold 2s Tws on/off:3 click

3



Bluetooth Connection

4



1. Turn on the speaker, you will hear the boot
2. After open the phone Bluetooth, Click the "Soundview" to pairing

Notes:

- 1.If it is not paired for 15 minutes after booting, it will shut down. When low battery,you can hear the prompt tone then the speaker will power off automatically
- 2.If Apple users feel that the volume is low, you can turn off this setting on the phone(Settings-Sounds & Haptics-Headphone Safety-Reduce Loud Sounds)

Specifications

5

Specifications

Speaker Type	bluetooth wireless speaker
Speaker system	Stereo
Dimensions	188*83*114mm
Weight	690g
Driver	4Ω 15W φ70mm
Audio Playtime	Approx 5 hours(@50-60% Volume)
BT Version	V5.3
Rated Power	15 Watts
Power Supply	Built-in 3600mAh Lithium Battery
Charging Time	Approx 2.5 hours(USB C)
Frequency Response	100-20KHZ
Range	up to 10m
Input power:	DC 5V/2A
Built-in Microphone	

Safety Instructions

6

1. Keep the product away from extremely hot and cold environments, it will damage the battery and circuit.
2. Avoid liquid immersion into the product.
3. Do not disassemble the product.
4. Do not use concentrated chemical products or detergents to clean the product.
5. Use only 5V/1A power supply. Connecting the power supply voltage too high may cause serious damage.
6. Do not randomly discard or place the product near fire or high temperature to avoid the danger of explosion.



Made in China



FCC statement

7

This device complies with part 15 of the FCC Rules. Operation is subject to the following two conditions: (1) this device may not cause harmful interference, and (2) this device must accept any interference received, including interference that may cause undesired operation.

Any changes or modifications not expressly approved by the party responsible for compliance could void the user's authority to operate the equipment.

NOTE: This equipment has been tested and found to comply with the limits for a Class B digital device, pursuant to Part 15 of the FCC Rules. These limits are designed to provide reasonable protection against harmful interference in a residential installation. This equipment generates, uses and can radiate radio frequency energy and, if not installed and used in accordance with the instructions, may cause harmful interference to radio communications. However, there is no guarantee that interference will not occur in a particular installation. If this equipment does cause harmful interference to radio or television reception, which can be determined by turning the equipment off and on, the user is encouraged to try to correct the interference by one or more of the following measures:

- Reorient or relocate the receiving antenna.
- Increase the separation between the equipment and receiver.
- Connect the equipment into an outlet on a circuit different from that to which the receiver is connected.
- Consult the dealer or an experienced radio/TV technician for help.

The device has been evaluated to meet general RF exposure requirement. The device can be used in portable exposure condition without restriction