



# Appendix B

## Detailed Test Results

|         |
|---------|
| 1. WIFI |
|---------|

|                      |
|----------------------|
| WIFI 2.4GHz for Body |
|----------------------|



Test Laboratory: LCS-SAR Lab

## WIFI 2.4G 802.11b 11CH Rear side 0mm

**DUT: Gamma Spectrometer; Type: KC761; Serial: A09133036-1**

Communication System: UID 0, WI-FI(2.4GHz) (0); Frequency: 2462 MHz;Duty Cycle: 1:1.005

Medium parameters used:  $f = 2462$  MHz;  $\sigma = 1.874$  S/m;  $\epsilon_r = 38.706$ ;  $\rho = 1000$  kg/m<sup>3</sup>

Phantom section: Flat Section

DASY Configuration:

- Probe: EX3DV4 - SN3805; ConvF(7.50, 7.50, 7.50); Calibrated: 2023/6/21;
- Sensor-Surface: 2mm (Mechanical Surface Detection),
- Electronics: DAE3 Sn419; Calibrated: 2023/6/20
- Phantom: SAM v5.0; Type: SAM; Serial: 1850
- DASY52 52.8.8(1222); SEMCAD X 14.6.10(7331)

**Configuration/Body/Area Scan (9x11x1):** Measurement grid: dx=12mm, dy=12mm

Maximum value of SAR (measured) = 0.199 W/kg

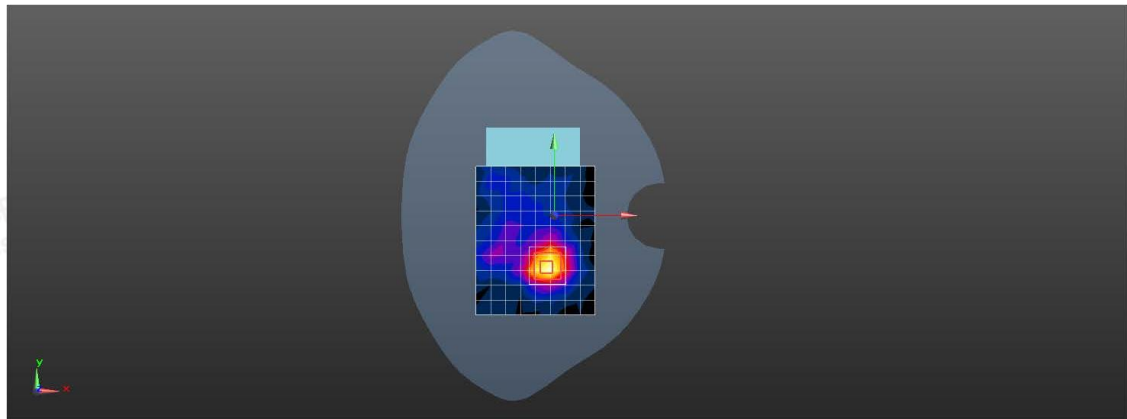
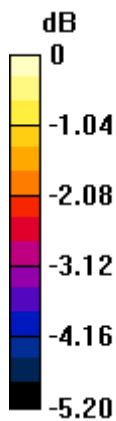
**Configuration/Body/Zoom Scan (7x7x7)/Cube 0:** Measurement grid: dx=5mm, dy=5mm, dz=5mm

Reference Value = 6.294 V/m; Power Drift = -0.04 dB

Peak SAR (extrapolated) = 0.307 W/kg

**SAR(1 g) = 0.151 W/kg; SAR(10 g) = 0.102 W/kg**

Maximum value of SAR (measured) = 0.203 W/kg



0 dB = 0.199 W/kg = -7.01 dBW/kg



Shenzhen LCS Compliance Testing Laboratory Ltd.

Add: 101, 201 Bldg A & 301 Bldg C, Juji Industrial Park Yabianxueziwei, Shajing Street, Baoan District, Shenzhen, 518000, China

Tel: +(86) 0755-82591330 | E-mail: webmaster@lcs-cert.com | Web: www.lcs-cert.com

Scan code to check authenticity