

# User Guide

WiFi 6 Adapter (without Driver)



System Support: Windows 10/11

# Easy Setup: Plug & Play automatically

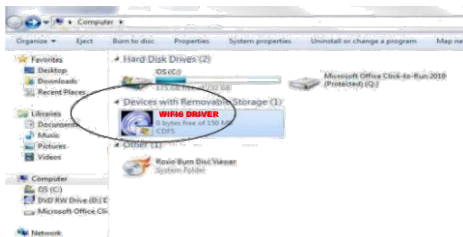
## Step 1

Plug the adapter into the USB port on the computer



## Step 2

The computer control panel opens the AutoPlay function or checks “**WIFI6 DRIVER**” to install the driver software



## Step 3

Choose your network and enter the password



## **FAQ**

**Q: Is this wifi adapter compatible with Chromebooks/ Linux/Mac OS ?**

**A:** No. It only works with Windows 11/10

**Q: I don't have a CD drive. How do I install the driver?**

**A:** Plug & Play automatically, you don't need to download driver.

**Q: Unable to reach maximum speed.**

**A:** Need to use with wifi 6 router to show the performance and speed of wifi 6.

**Q: Can't connect to wifi or drop wifi connections.**

**A:** 1. Check that the drivers have been installed correctly

2. Signal interference-There may be strong signal interference sources next to the router, such as: microwave ovens, magnets, high-voltage lines, please place them away from these devices.

3. Insufficient USB power supply, please try to insert the wifi adapter into the USB port on the back of the computer case.

**FCC Caution.**

This device complies with part 15 of the FCC Rules. Operation is subject to the following two conditions:

- (1) This device may not cause harmful interference, and
- (2) this device must accept any interference received, including interference that may cause undesired operation.

Any Changes or modifications not expressly approved by the party responsible for compliance could void the user's authority to operate the equipment.

Note: This equipment has been tested and found to comply with the limits for a Class B digital device, pursuant to part 15 of the FCC Rules. These limits are designed to provide reasonable protection against harmful interference in a residential installation. This equipment generates uses and can radiate radio frequency energy and, if not installed and used in accordance with the instructions, may cause harmful interference to radio communications. However, there is no guarantee that interference will not occur in a particular installation. If this equipment does cause harmful interference to radio or television reception, which can be determined by turning the equipment off and on, the user is encouraged to try to correct the interference by one or more of the following measures:

- Reorient or relocate the receiving antenna.
- Increase the separation between the equipment and receiver.
- Connect the equipment into an outlet on a circuit different from that to which the receiver is connected.
- Consult the dealer or an experienced radio/TV technician for help.

The device has been evaluated to meet general RF exposure requirement. The device can be used in portable exposure condition without restriction.