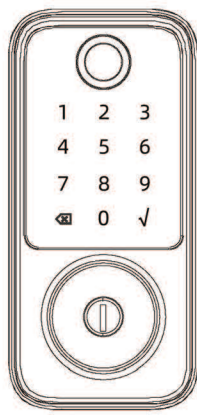


Lockhappy Lock

Lock  
Installation Guide



Installation Video



SCAN ME

or go to link of video:  
<https://www.>

APP Guide Video



SCAN ME

or go to link of video:  
<https://www.>

Download App



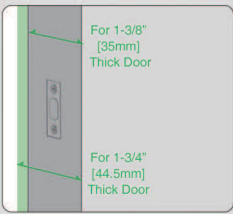
Download TTlock app from  
Google Play or App Store  
Search "TTlock"

What's Included

Latch and Strike	Exterior Assembly	Interior Assembly	Screws
			Step 3
			Step 5
			Step 7

1 Adjust the Backset of Latch(if needed)

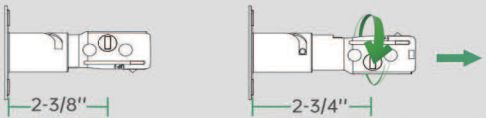
A: Make Sure Door Thickness is  
Between:minimum 35mm(1- 3/8 ") to  
maximum 44.5mm(1- 3/4 ")



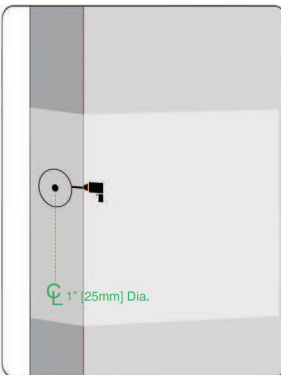
B: If the latch holes are centered in the door hole,  
no adjustment is required. Proceed tp step 3. If  
the latch holes are not centered, adjust latch.  
See "Latch Adjustment". Notice: "UP ↑ " must be  
upturned!



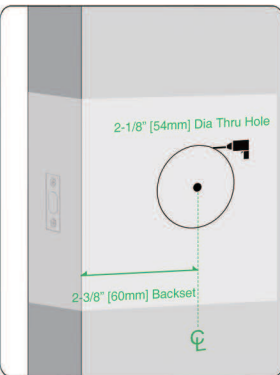
C: Latch Adjustment(only if needed)



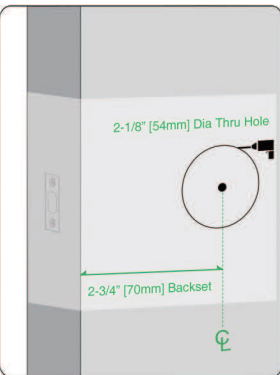
2 Drill Measure Card(only if drill needed)



A: Use the Drill Measure  
Card or measure the middle  
of the door thickness to drill  
the center of the front door  
hole; drill the hole by 25mm  
(1 in) diameter.

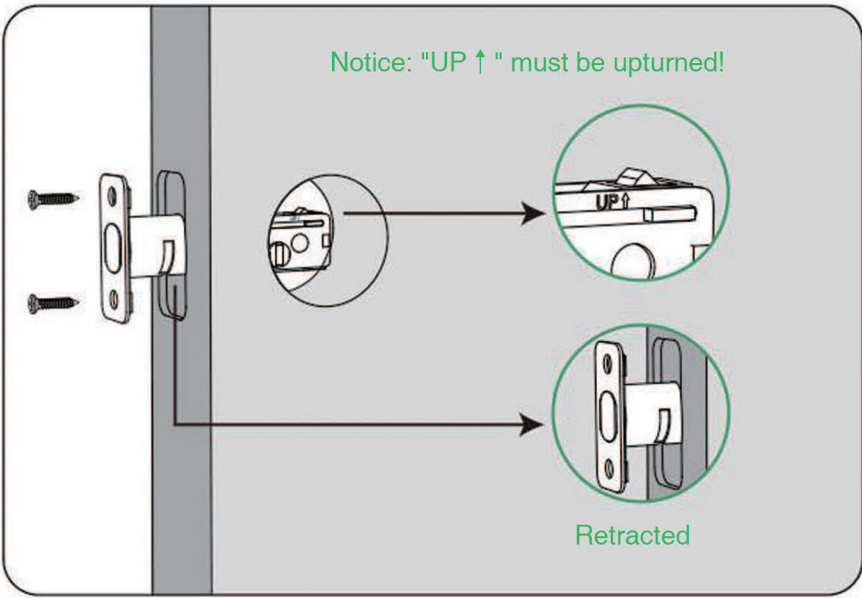


B: Drill the center at 60mm  
from the edge of the door;  
drill the hole by 54mm  
diameter.



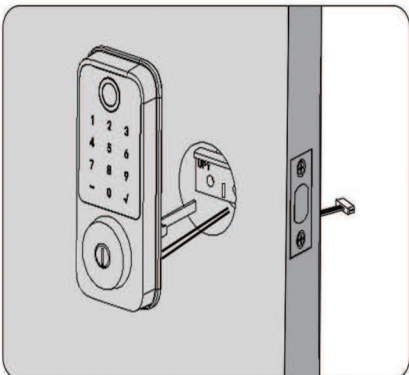
C: or Drill the center at 70mm  
from the edge of the door; drill  
the hole by 54mm diameter.

3 Install Latch

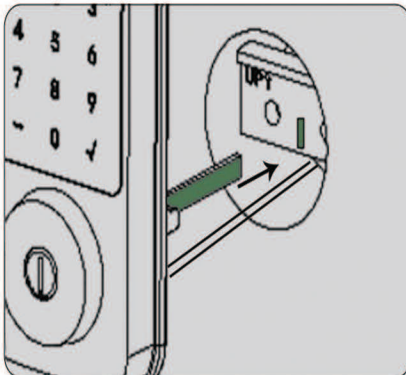


4 Install Exterior Lock

Notice: don't insert the key during installation.

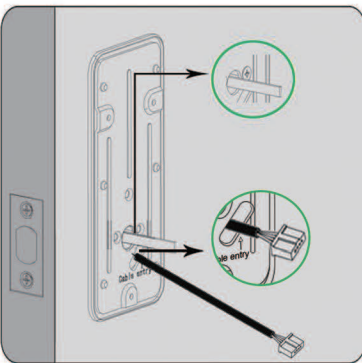


NOTE: route the IC cable below the deadbolt.

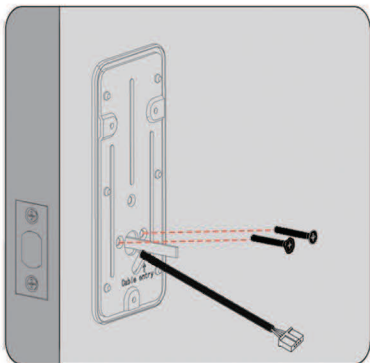


NOTE: the spindle must be vertical.

5 Fix the Mounting Plate

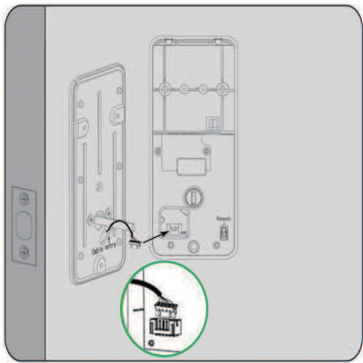


A: Route the cable through the cable  
entry hole, plate with words must face  
outside.

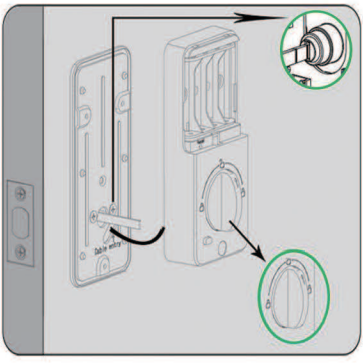


B: Fix the plate with 2pcs long screws.

6 Install the Interior Lock

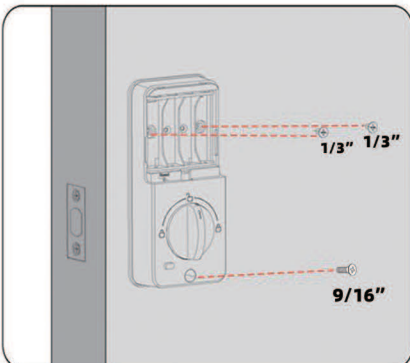


A: Insert the IC cable to the interior  
lock.

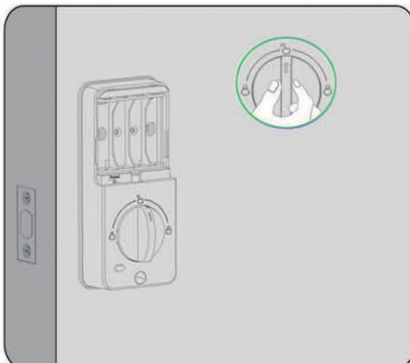


B: Rotate the door knob in vertical position  
and insert the spindle.

7 Fix Interior Lock

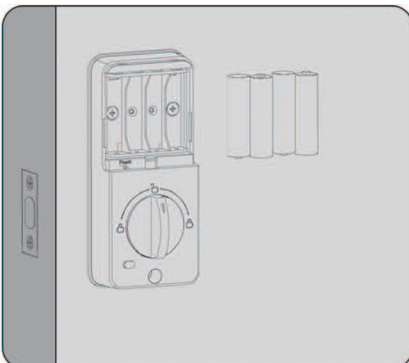


A: fix the interior lock to the mounting  
plate with 3pcs screws.

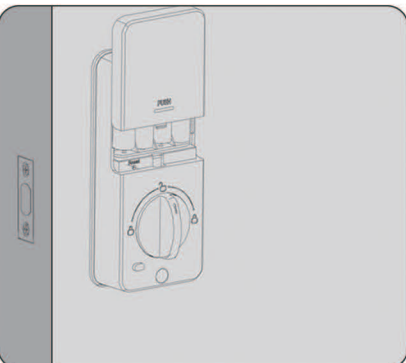


B: Test the lock by rotating the door knob  
to see if the deadbolt can be extended and  
retracted smoothly.

8 Install Batteries and Battery Cover



4 x AA batteries required.



Built-in low battery voice alert.

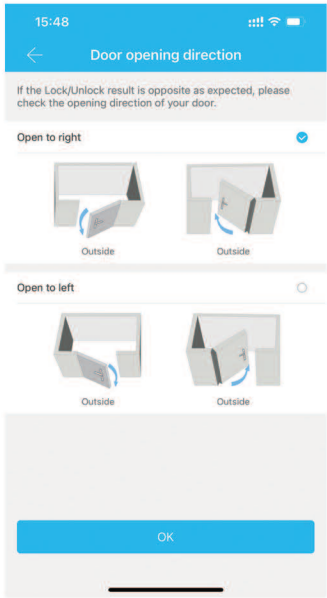
9 Detect Left/Right Hand Door



Hinge on the left is "Open to left"

Hinge on the right is "Open to right"

10 Rest Door Open Direction in APP



Reset the door open direction in APP and  
click "OK" to save your settings.

Notice: must click "OK" until "Operation Successful"  
to reset again even though the original door open  
direction is correct.

FCC Statement

This device complies with part 15 of the FCC rules. Operation is subject to the following two conditions: (1) this device may not cause harmful interference, and (2) this device must accept any interference received, including interference that may cause undesired operation.

Changes or modifications not expressly approved by the party responsible for compliance could void the user's authority to operate the equipment.

NOTE: This equipment has been tested and found to comply with the limits for a Class B digital device, pursuant to part 15 of the FCC Rules. These limits are designed to provide reasonable protection against harmful interference in a residential installation. This equipment generates uses and can radiate radio frequency energy and, if not installed and used in accordance with the instructions, may cause harmful interference to radio communications. However, there is no guarantee that interference will not occur in a particular installation. If this equipment does cause harmful interference to radio or television reception, which can be determined by turning the equipment off and on, the user is encouraged to try to correct the interference by one or more of the following measures:

- Reorient or relocate the receiving antenna.
- Increase the separation between the equipment and receiver.
- Connect the equipment into an outlet on a circuit different from that to which the receiver is connected.
- Consult the dealer or an experienced radio/TV technician for help.

The device has been evaluated to meet general RF exposure requirement. The device can be used in portable exposure condition without restriction.

Specification:  
Model: TTL618  
Manufacturer: Shenzhen Wenka Technology Ltd.  
Address: Room 401, No.1, Fudigang Second Industrial Park, Pingdong Community, Longgang District, Shenzhen, Guangdong Province, China



Made in China

Need Support?

Email us First!

Email: [support@lockhappy.com](mailto:support@lockhappy.com)  
Phone: +1 (904) 425-8008  
Whatsapp: +8618025315651

or visit our website to chat with with us  
[www.lockhappy.com](http://www.lockhappy.com)