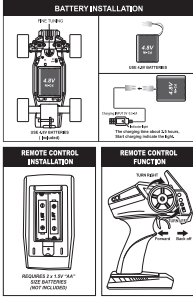


BIG WHEEL R/C CAR
1:18 MODEL SCALE



DEAR CUSTOMER

Thank you for purchasing RC CAR. This product is designed for entertainment, the use of high-quality materials to ensure product performance and durability. In order to facilitate your understanding, we have produced this manual as detailed as possible. This product is a high performance model product, so you will need to maintain it regularly to maintain optimum performance.

CAUTIONS

Please read the instructions carefully. If necessary, parents, guardians or other adults DO NOT use sports car on the street, otherwise it may cause serious traffic accidents, personal injury or property damage. Please be in the car near pedestrians and children. Please do not use this product in a narrow area or at home. Check that all covers are in place.

Note on the size of the battery after the attention of the car!

ATTENTION

First turn off the engine, then turn off the remote control switch, remove the body battery and remote control battery. They product needs to be maintained after each sports car. Failure to do so may result in excessive heat or damage to the engine and circuit board.

Keep the battery in a well-ventilated area, away from hot equipment, open flames, direct sunlight, or near a battery. Keep the battery out of the reach of children. Do not touch. Some parts will heat up in the sports car and DO NOT touch until the exhaust pipe or engine is completely cooled.

This device complies with part 15 of the FCC Rules. Operation is subject to the following two conditions: (1) This device may not cause harmful interference, and (2) this device must accept any interference received, including interference that may cause undesired operation. Any changes or modifications not expressly approved by the party responsible for compliance could void the user's authority to operate the equipment.

NOTE: This equipment has been tested and found to comply with the limits for a Class B digital device, pursuant to Part 15 of the FCC Rules. These limits are designed to provide reasonable protection against harmful interference in a residential installation. This equipment generates, uses and can radiate radio frequency energy and, if not installed and used in accordance with the instructions, may cause harmful interference to radio communications. However, there is no guarantee that interference will not occur in a particular installation.

If this equipment does cause harmful interference to radio or television reception, which can be determined by turning the equipment off and on, the user is encouraged to try to correct the interference by one or more of the following measures:

- Reorient or relocate the receiving antenna.
- Increase the separation between the equipment and receiver.
- Connect the equipment into an outlet on a circuit different from that to which the receiver is connected.
- Consult the dealer or an experienced radio/TV technician for help.

The device has been evaluated to meet normal RF exposure requirement. The device can be used in portable exposure condition without restriction.

