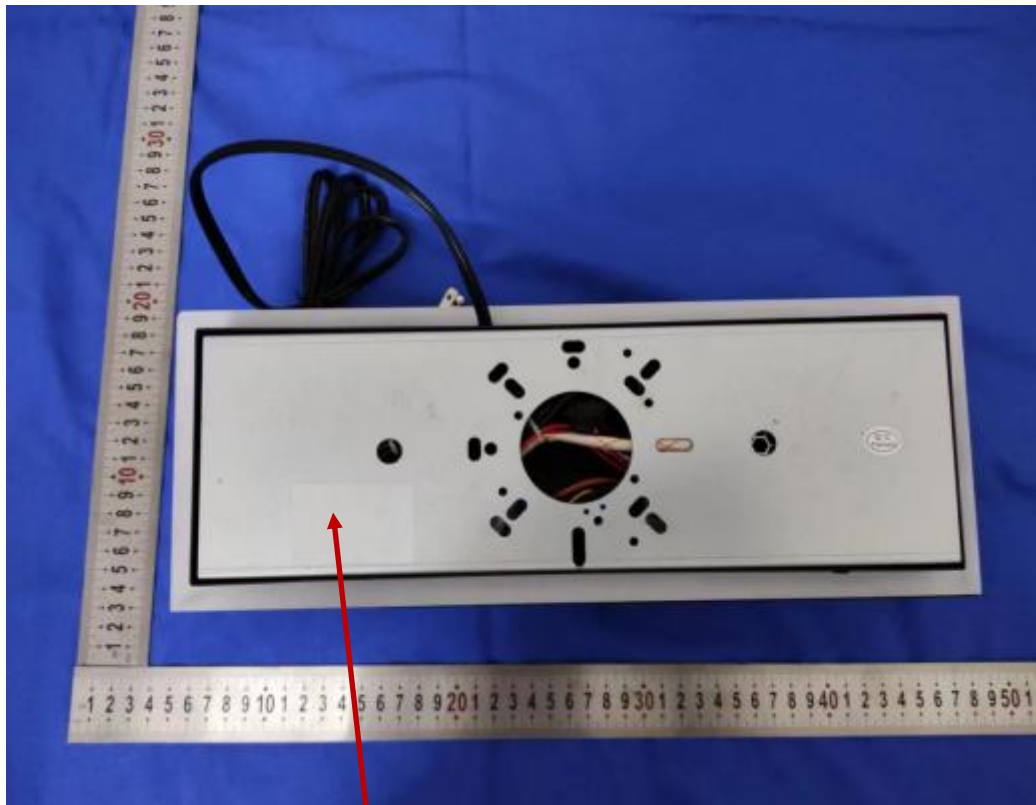


Lable:



Wireless charge Lamp
FCC ID:2BBZG-WS-S06
Model: WS-S06
Input: AC 100-240V 50-60Hz
Wireless Output: 15W Max

This device complies with part 15 of the FCC Rules. Operation is subject to the following two conditions: (1) This device may not cause harmful interference, and (2) this device must accept any interference received, including interference that may cause undesired operation.

