



Compliance Certification Services (Kunshan) Inc.

CCSEM-TRF-001 Rev. 02 Sep 01, 2023

Report No.: KSCR231000185801

Page: 1 of 70

SAR TEST REPORT

Application No.: KSCR2310001858AT(SZCR2309003206AT)
Applicant: Anzu Robotics LLC
Address of Applicant: c/o Corporation Trust Center, 1209 Orange Street, Wilmington, Delaware 19801
Manufacturer: Anzu Robotics LLC
Address of Manufacturer: c/o Corporation Trust Center, 1209 Orange Street, Wilmington, Delaware 19801
Product Name: Raptor Remote Controller
Model No.(EUT): RRC01
FCC ID: 2BBYS-RRC01
Standard(s) : FCC 47CFR §2.1093
Date of Receipt: 2023-10-12
Date of Test: 2023-11-14 to 2023-11-18
Date of Issue: 2023-11-21

Test Result:

Pass*

* In the configuration tested, the EUT complied with the standards specified above.

This document is issued by the Company subject to its General Conditions of Service printed overleaf, available on request or accessible at <http://www.sgs.com/en/Terms-and-Conditions.aspx> and, for electronic format documents, subject to Terms and Conditions for Electronic Documents at <http://www.sgs.com/en/Terms-and-Conditions/Terms-e-Document.aspx>. Attention is drawn to the limitation of liability, indemnification and jurisdiction issues defined therein.

Any holder of this document is advised that information contained hereon reflects the Company's findings at the time of its intervention only and within the limits of Client's instructions, if any. The Company's sole responsibility is to its Client and this document does not exonerate parties to a transaction from exercising all their rights and obligations under the transaction documents. This document cannot be reproduced except in full, without prior written approval of the Company. Any unauthorized alteration, forgery or falsification of the content or appearance of this document is unlawful and offenders may be prosecuted to the fullest extent of the law.

Unless otherwise stated the results shown in this test report refer only to the sample(s) tested and such sample(s) are retained for 30 days only.



Compliance Certification Services (Kunshan) Inc.

CCSEM-TRF-001 Rev. 02 Sep 01, 2023

Report No.: KSCR231000185801

Page: 2 of 70

REVISION HISTORY

Version	Description	Date	Remark
00	Original	2023-11-21	/

Authorized for issue by:				
Tested By		<i>Richard Kong</i>		
		Richard Kong / Project Engineer		
Approved By		<i>Terry Hou</i>		
		Terry Hou / Reviewer		



Compliance Certification Services (Kunshan) Inc.

CCSEM-TRF-001 Rev. 02 Sep 01, 2023

Report No.: KSCR231000185801

Page: 3 of 70

TEST SUMMARY

Frequency Band	Maximum Reported SAR(W/kg)	
	Body 1-g	Extremity 10-g
SDR (2.4GHz)	0.03	0.31
SDR (5GHz)	0.02	0.22
BT	0.02	0.01
WI-FI (2.4GHz)	0.71	0.80
WI-FI (5GHz)	1.45	2.53
Sum SAR	1.49	2.91
SAR Limited	1.6	4.0



Compliance Certification Services (Kunshan) Inc.

CCSEM-TRF-001 Rev. 02 Sep 01, 2023

Report No.: KSCR231000185801

Page: 4 of 70

CONTENTS

1	General Information	5
1.1	General Description of EUT	5
1.2	Test Specification	7
1.3	RF exposure limits	8
1.4	Test Location	9
1.5	Test Facility	9
2	Laboratory Environment	10
3	SAR Measurements System Configuration	11
3.1	The SAR Measurement System	11
3.2	Isotropic E-field Probe EX3DV4	12
3.3	Data Acquisition Electronics (DAE)	13
3.4	SAM Twin Phantom	13
3.5	ELI Phantom	14
3.6	Device Holder for Transmitters	15
3.7	Measurement procedure	16
4	SAR measurement variability and uncertainty	20
4.1	SAR measurement variability	20
4.2	SAR measurement uncertainty	21
5	Description of Test Position	22
5.1	Extremity exposure conditions	22
6	SAR System Verification Procedure	23
6.1	Tissue Simulate Liquid	23
6.2	SAR System Check	26
7	Test Configuration	29
8	Test Result	36
8.1	Measurement of RF Conducted Power	36
8.2	Measurement of SAR Data	48
8.3	Multiple Transmitter Evaluation	57
9	Equipment list	58
10	Calibration certificate	59
11	Photographs	59
Appendix A: Detailed System Check Results		60
Appendix B: Detailed Test Results		64
Appendix C: Calibration certificate		70
Appendix D: Photographs		70

1 General Information

1.1 General Description of EUT

Device Type:	Portable device		
Exposure Category:	Uncontrolled environment / general population		
SN:	7UKDL8Q0000002		
Hardware Version:	V1.0		
Software Version:	V01.00.00.00		
Antenna Gain:	BT/BLE: 2.5dBi (Provided by Manufacturer) 2.4G WIFI: ANT0&ANT1: 2.5dBi (Provided by Manufacturer) U-NII-1: ANT0&ANT1: 1dBi (Provided by Manufacturer) U-NII-3: ANT0&ANT1: 3dBi (Provided by Manufacturer) 2.4G SDR: ANT0&ANT1: 3dBi (Provided by Manufacturer) 5.8G SDR: ANT0: 3.5dBi; ANT1: 4dBi (Provided by Manufacturer)		
Antenna Type:	PCB Antenna		
Device Operating Configurations:			
Modulation Mode:	WIFI: CCK, DSSS, OFDM, OFDMA SDR 2.4GHz: OFDM SDR 5.1GHz: OFDM SDR 5.8GHz: OFDM BT: GFSK, $\pi/4$ DQPSK, 8DPSK		
Frequency Bands:	Band	Tx (MHz)	Rx (MHz)
	WIFI2.4G	2412-2462	2412-2462
	BT	2402-2480	2402-2480
	WIFI(U-NII-1)	5150~5250	5150~5250
	WIFI(U-NII-3)	5725~5850	5725~5850
	SDR 2.4GHz	2403.5~2479.12	2403.5~2479.12
	SDR 5.8GHz	5727.5~5848.12	5727.5~5848.12
	SDR 5.1GHZ	N/A	5180-5240
Battery Information:	Model:	WB4-5000mAh-7.2V	
	Normal Voltage:	7.2V DC	
	Rated capacity:	5000mAh*2	
	Battery Type:	Rechargeable Li-ion Battery	
	Manufacturer:	Springpower Technology(SHENZHEN) Co., Ltd.	



Compliance Certification Services (Kunshan) Inc.

CCSEM-TRF-001 Rev. 02 Sep 01, 2023

Report No.: KSCR231000185801

Page: 6 of 70

1.1.1 DUT Antenna Locations

Please see the Appendix D



Compliance Certification Services (Kunshan) Inc.

CCSEM-TRF-001 Rev. 02 Sep 01, 2023

Report No.: KSCR231000185801

Page: 7 of 70

1.2 Test Specification

Identity	Document Title
FCC 47CFR §2.1093	Radio frequency Radiation Exposure Evaluation: Portable Devices
IEEE Std C95.1 – 1992	IEEE Standard for Safety Levels with Respect to Human Exposure to Electric, Magnetic, and Electromagnetic Fields, 0 Hz to 300 GHz
IEEE 1528-2013	Recommended Practice for Determining the Peak Spatial-Average Specific Absorption Rate (SAR) in the Human Head from Wireless Communications Devices: Measurement Techniques
KDB 447498 D04	RF Exposure Procedures and Equipment Authorization Policies for Mobile and Portable Devices
KDB 865664 D01 v01r04	SAR Measurement Requirements for 100 MHz to 6 GHz
KDB 865664 D02 v01r02	RF Exposure Compliance Reporting and Documentation Considerations
KDB 248227 D01 v02r02	SAR GUIDANCE FOR IEEE 802.11 (Wi-Fi) TRANSMITTERS



Compliance Certification Services (Kunshan) Inc.

CCSEM-TRF-001 Rev. 02 Sep 01, 2023

Report No.: KSCR231000185801

Page: 8 of 70

1.3 RF exposure limits

Human Exposure	Uncontrolled Environment General Population	Controlled Environment Occupational
Spatial Peak SAR* (Brain*Trunk)	1.60 W/kg	8.00 W/kg
Spatial Average SAR** (Whole Body)	0.08 W/kg	0.40 W/kg
Spatial Peak SAR*** (Hands/Feet/Ankle/Wrist)	4.00 W/kg	20.00 W/kg

Notes:

* The Spatial Peak value of the SAR averaged over any 1 gram of tissue (defined as a tissue volume in the shape of a cube) and over the appropriate averaging time

** The Spatial Average value of the SAR averaged over the whole body.

*** The Spatial Peak value of the SAR averaged over any 10 grams of tissue (defined as a tissue volume in the shape of a cube) and over the appropriate averaging time.

Uncontrolled Environments are defined as locations where there is the exposure of individuals who have no knowledge or control of their exposure.

Controlled Environments are defined as locations where there is exposure that may be incurred by persons who are aware of the potential for exposure, (i.e. as a result of employment or occupation.)

1.4 Test Location

All tests were performed at:

Compliance Certification Services (Kunshan) Inc.

No.10 Weiye Rd, Innovation park, Eco&Tec, Development Zone, Kunshan City, Jiangsu, China.

Tel: +86 512 5735 5888

Fax: +86 512 5737 0818

No tests were sub-contracted.

Note:

1.SGS is not responsible for wrong test results due to incorrect information (e.g. max. clock frequency, highest internal frequency, antenna gain, cable loss, etc) is provided by the applicant. (if applicable).

2.SGS is not responsible for the authenticity, integrity and the validity of the conclusion based on results of the data provided by applicant. (if applicable).

3. Sample source: sent by customer.

1.5 Test Facility

The test facility is recognized, certified, or accredited by the following organizations:

• A2LA

Compliance Certification Services (Kunshan) Inc. is accredited by the American Association for Laboratory Accreditation (A2LA). Certificate No. 2541.01.

• FCC

Compliance Certification Services (Kunshan) Inc. has been recognized as an accredited testing laboratory.

Designation Number: CN1172.

• ISED

Compliance Certification Services (Kunshan) Inc. has been recognized by Innovation, Science and Economic Development Canada (ISED) as an accredited testing laboratory.

Company Number: 2324E; CAB identifier: CN0072

• VCCI

The 3m and 10m Semi-anechoic chamber and Shielded Room of Compliance Certification Services (Kunshan) Inc. has been registered in accordance with the Regulations for Voluntary Control Measures with Registration No.: R-20134, R-11600, C-11707, T-11499, G-10216 respectively.

2 Laboratory Environment

Temperature	Min. = 18°C, Max. = 25 °C
Relative humidity	Min. = 30%, Max. = 70%
Ground system resistance	< 0.5 Ω
Ambient noise is checked and found very low and in compliance with requirement of standards. Reflection of surrounding objects is minimized and in compliance with requirement of standards.	

3 SAR Measurements System Configuration

3.1 The SAR Measurement System

This SAR Measurement System uses a Computer-controlled 3-D stepper motor system (SPEAG DASY5 professional system). A E-field probe is used to determine the internal electric fields. The SAR can be obtained from the equation $SAR = \sigma (|E|)^2 / \rho$ where σ and ρ are the conductivity and mass density of the tissue-Simulate.

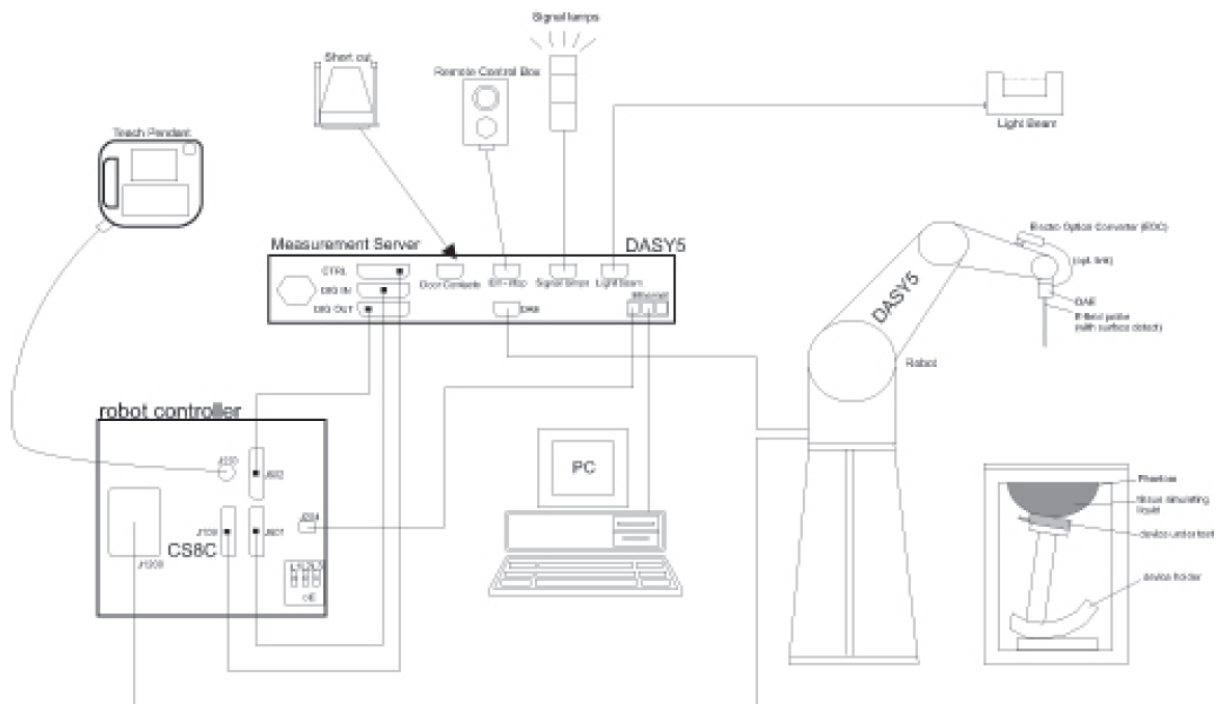
The DASY5 system for performing compliance tests consists of the following items:

A standard high precision 6-axis robot (Stabile RX family) with controller, teach pendant and software .An arm extension for accommodation the data acquisition electronics (DAE).

A dosimetric probe, i.e., an isotropic E-field probe optimized and calibrated for usage in tissue simulating liquid. The probe is equipped with an optical surface detector system.

A data acquisition electronics (DAE) which performs the signal amplification, signal multiplexing, AD-conversion, offset measurements, mechanical surface detection, collision detection, etc. The unit is battery powered with standard or rechargeable batteries. The signal is optically transmitted to the EOC.

The Electro-optical converter (EOC) performs the conversion between optical and electrical of the signals for the digital communication to DAE and for the analog signal from the optical surface detection. The EOC is connected to the measurement server.




F-1. SAR Measurement System Configuration

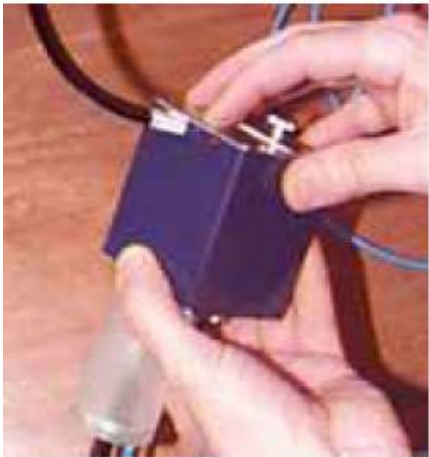
- The function of the measurement server is to perform the time critical tasks such as signal filtering, control of the robot operation and fast movement interrupts.

- A probe alignment unit which improves the (absolute) accuracy of the probe positioning.
- A computer operating Windows 7.
- DASY5 software.
- Remote control with teach pendant and additional circuitry for robot safety such as warning lamps, etc.
- The SAM twin phantom enabling testing left-hand, right-hand and Body Worn usage.
- The device holder for handheld mobile phones.
- Tissue simulating liquid mixed according to the given recipes.
- Validation dipole kits allowing to validate the proper functioning of the system.


3.2 Isotropic E-field Probe EX3DV4

	<p>Symmetrical design with triangular core Built-in shielding against static charges PEEK enclosure material (resistant to organic solvents, e.g., DGBE)</p>
<p>Calibration</p>	<p>ISO/IEC 17025 calibration service available.</p>
<p>Frequency</p>	<p>10 MHz to > 6 GHz Linearity: ± 0.2 dB (30 MHz to 6 GHz)</p>
<p>Directivity</p>	<p>± 0.3 dB in TSL (rotation around probe axis) ± 0.5 dB in TSL (rotation normal to probe axis)</p>
<p>Dynamic Range</p>	<p>10 µW/g to > 100 mW/g Linearity: ± 0.2 dB (noise: typically < 1 µW/g)</p>
<p>Dimensions</p>	<p>Overall length: 337 mm (Tip: 20 mm) Tip diameter: 2.5 mm (Body: 12 mm) Typical distance from probe tip to dipole centers: 1 mm</p>
<p>Application</p>	<p>High precision dosimetric measurements in any exposure scenario (e.g., very strong gradient fields); the only probe that enables compliance testing for frequencies up to 6 GHz with precision of better 30%.</p>
<p>Compatibility</p>	<p>DASY3, DASY4, DASY52 SAR and higher, EASY4/MRI</p>

3.3 Data Acquisition Electronics (DAE)

Model	DAE4	
Construction	Signal amplifier, multiplexer, A/D converter and control logic. Serial optical link for communication with DASY4/5 embedded system (fully remote controlled). Two step probe touch detector for mechanical surface detection and emergency robot stop.	
Measurement Range	-100 to +300 mV (16 bit resolution and two range settings: 4mV,400mV)	
Input Offset Voltage	< 5μV (with auto zero)	
Input Bias Current	< 50 f A	
Dimensions	60 x 60 x 68 mm	


3.4 SAM Twin Phantom

Material	Vinylester, glass fiber reinforced (VE-GF)	
Liquid Compatibility	Compatible with all SPEAG tissue simulating liquids (incl. DGBE type)	
Shell Thickness	2 ± 0.2 mm (6 ± 0.2 mm at ear point)	
Dimensions (incl. Wooden Support)	Length: 1000 mm Width: 500 mm Height: adjustable feet	
Filling Volume	approx. 25 liters	
Wooden Support	SPEAG standard phantom table	

The shell corresponds to the specifications of the Specific Anthropomorphic Mannequin (SAM) phantom defined in IEEE 1528 and IEC 62209-1. It enables the dosimetric evaluation of left and right hand phone usage as well as body mounted usage at the flat phantom region. A cover prevents evaporation of the liquid. Reference markings on the phantom allow the complete setup of all predefined phantom positions and measurement grids by teaching three points with the robot.

Twin SAM V5.0 has the same shell geometry and is manufactured from the same material as Twin SAM V4.0, but has reinforced top structure.

3.5 ELI Phantom

Material	Vinylester, glass fiber reinforced (VE-GF)	
Liquid Compatibility	Compatible with all SPEAG tissue simulating liquids (incl. DGBE type)	
Shell Thickness	2.0 ± 0.2 mm (bottom plate)	
Dimensions	Major axis: 600 mm Minor axis: 400 mm	
Filling Volume	approx. 30 liters	
Wooden Support	SPEAG standard phantom table	

Phantom for compliance testing of handheld and body-mounted wireless devices in the frequency range of 30 MHz to 6 GHz. ELI is fully compatible with the IEC 62209-2 standard and all known tissue simulating liquids. ELI has been optimized regarding its performance and can be integrated into our standard phantom tables. A cover prevents evaporation of the liquid. Reference markings on the phantom allow installation of the complete setup, including all predefined phantom positions and measurement grids, by teaching three points. The phantom is compatible with all SPEAG dosimetric probes and dipoles.

ELI V5.0 has the same shell geometry and is manufactured from the same material as ELI4, but has reinforced top structure.

3.6 Device Holder for Transmitters



F-2. Device Holder for Transmitters

- The DASY device holder is designed to cope with different positions given in the standard. It has two scales for the device rotation (with respect to the body axis) and the device inclination (with respect to the line between the ear reference points). The rotation centres for both scales are the ear reference point (ERP). Thus the device needs no repositioning when changing the angles.
- The DASY device holder has been made out of low-loss POM material having the following dielectric parameters: relative permittivity $\epsilon=3$ and loss tangent $\delta=0.02$. The amount of dielectric material has been reduced in the closest vicinity of the device, since measurements have suggested that the influence of the clamp on the test results could thus be lowered.

3.7 Measurement procedure

3.7.1 Scanning procedure

Step 1: Power reference measurement

The “reference” and “drift” measurements are located at the beginning and end of the batch process. They measure the field drift at one single point in the liquid over the complete procedure.

Step 2: Area scan

The SAR distribution at the exposed side of the head was measured at a distance of 4mm from the inner surface of the shell. The area covered the entire dimension of the head and the horizontal grid spacing was 15mm*15mm or 12mm*12mm or 10mm*10mm. Based on the area scan data, the area of the maximum absorption was determined by spline interpolation.

Step 3: Zoom scan

Around this point, a volume of 30mm*30mm*30mm (fine resolution volume scan, zoom scan) was assessed by measuring 5x5x7 points ($\leq 2\text{GHz}$) and 7x7x7 points ($\geq 2\text{GHz}$). On this basis of this data set, the spatial peak SAR value was evaluated with the following procedure:

The data at the surface was extrapolated, since the centre of the dipoles is 2.0mm away from the tip of the probe and the distance between the surface and the lowest measuring point is 1.2mm. (This can be variable. Refer to the probe specification). The extrapolation was based on a least square algorithm. A polynomial of the fourth order was calculated through the points in z-axes. This polynomial was then used to evaluate the points between the surface and the probe tip. The maximum interpolated value was searched with a straight-forward algorithm. Around this maximum the SAR values averaged over the spatial volumes (1g or 10g) were computed using the 3D-Spline interpolation algorithm. The volume was integrated with the trapezoidal algorithm. One thousand points were interpolated to calculate the average. All neighbouring volumes were evaluated until no neighboring volume with a higher average value was found.

The area and zoom scan resolutions specified in the table below must be applied to the SAR measurements. Probe boundary effect error compensation is required for measurements with the probe tip closer than half a probe tip diameter to the phantom surface. Both the probe tip diameter and sensor offset distance must satisfy measurement protocols; to ensure probe boundary effect errors are minimized and the higher fields closest to the phantom surface can be correctly measured and extrapolated to the phantom surface for computing 1-g SAR. Tolerances of the post-processing algorithms must be verified by the test laboratory for the scan resolutions used in the SAR measurements, according to the reference distribution functions specified in IEEE Std. 1528-2013.

		≤ 3 GHz	> 3 GHz
Maximum distance from closest measurement point (geometric center of probe sensors) to phantom surface		5 ± 1 mm	$\frac{1}{2} \cdot \delta \cdot \ln(2) \pm 0.5$ mm
Maximum probe angle from probe axis to phantom surface normal at the measurement location		$30^\circ \pm 1^\circ$	$20^\circ \pm 1^\circ$
Maximum area scan spatial resolution: Δx_{Area} , Δy_{Area}		≤ 2 GHz: ≤ 15 mm 2 – 3 GHz: ≤ 12 mm	3 – 4 GHz: ≤ 12 mm 4 – 6 GHz: ≤ 10 mm
		When the x or y dimension of the test device, in the measurement plane orientation, is smaller than the above, the measurement resolution must be \leq the corresponding x or y dimension of the test device with at least one measurement point on the test device.	
Maximum zoom scan spatial resolution: Δx_{Zoom} , Δy_{Zoom}		≤ 2 GHz: ≤ 8 mm 2 – 3 GHz: ≤ 5 mm*	3 – 4 GHz: ≤ 5 mm* 4 – 6 GHz: ≤ 4 mm*
Maximum zoom scan spatial resolution, normal to phantom surface	uniform grid: $\Delta z_{Zoom}(n)$	≤ 5 mm	3 – 4 GHz: ≤ 4 mm 4 – 5 GHz: ≤ 3 mm 5 – 6 GHz: ≤ 2 mm
	graded grid	$\Delta z_{Zoom}(1)$: between 1 st two points closest to phantom surface	≤ 4 mm
		$\Delta z_{Zoom}(n>1)$: between subsequent points	$\leq 1.5 \cdot \Delta z_{Zoom}(n-1)$
Minimum zoom scan volume	x, y, z	≥ 30 mm	3 – 4 GHz: ≥ 28 mm 4 – 5 GHz: ≥ 25 mm 5 – 6 GHz: ≥ 22 mm
<p>Note: δ is the penetration depth of a plane-wave at normal incidence to the tissue medium; see draft standard IEEE P1528-2011 for details.</p> <p>* When zoom scan is required and the <u>reported</u> SAR from the <u>area scan based 1-g SAR estimation</u> procedures of KDB 447498 is ≤ 1.4 W/kg, ≤ 8 mm, ≤ 7 mm and ≤ 5 mm zoom scan resolution may be applied, respectively, for 2 GHz to 3 GHz, 3 GHz to 4 GHz and 4 GHz to 6 GHz.</p>			

Step 4: Power reference measurement (drift)

The Power Drift Measurement job measures the field at the same location as the most recent power reference measurement job within the same procedure, and with the same settings. The indicated drift is mainly the variation of the DUT’s output power and should vary max. $\pm 5\%$

3.7.2 Data Storage

The DASY software stores the acquired data from the data acquisition electronics as raw data (in microvolt readings from the probe sensors), together with all necessary software parameters for the data evaluation (probe calibration data, liquid parameters and device frequency and modulation data) in measurement files with the extension “.DAE3”. The software evaluates the desired unit and format for output each time the data is visualized or exported. This allows verification of the complete software setup even after the measurement and allows correction of incorrect parameter settings. For example, if a measurement has been performed with a wrong crest factor parameter in the device setup, the parameter can be corrected afterwards and the data can be re-evaluated. The measured data can be visualized or exported in different units or formats, depending on the selected probe type ([V/m], [A/m], [°C], [m W/g], [m W/cm²], [dBrel], etc.). Some of these units are not available in certain situations or show meaningless results, e.g., a SAR output in a lossless media will always be zero. Raw data can also be exported to perform the evaluation with other software packages.

3.7.3 Data Evaluation by SEMCAD

The SEMCAD software automatically executes the following procedures to calculate the field units from the microvolt readings at the probe connector. The parameters used in the evaluation are stored in the configuration modules of the software:

Probe parameters:	- Sensitivity	Normi, ai0, ai1, ai2
- Conversion factor	ConvFi	
- Diode compression point	Dcpi	
Device parameters:	- Frequency	f
- Crest factor	cf	
Media parameters:	- Conductivity	ε
- Density	ρ	

These parameters must be set correctly in the software. They can be found in the component documents or they can be imported into the software from the configuration files issued for the DASY components. In the direct measuring mode of the multimeter option, the parameters of the actual system setup are used. In the scan visualization and export modes, the parameters stored in the corresponding document files are used.

The first step of the evaluation is a linearization of the filtered input signal to account for the compression characteristics of the detector diode. The compensation depends on the input signal, the diode type and the DC-transmission factor from the diode to the evaluation electronics.

If the exciting field is pulsed, the crest factor of the signal must be known to correctly compensate for peak power. The formula for each channel can be given as:

$$V_i = U_i + U_i^2 \cdot cf / dcpi$$

With V_i = compensated signal of channel i ($i = x, y, z$)

U_i = input signal of channel i ($i = x, y, z$)

cf = crest factor of exciting field (DASY parameter)

dcpi = diode compression point (DASY parameter)

From the compensated input signals the primary field data for each channel can be evaluated:

E-field probes:

$$E_i = (V_i / Norm_i \cdot ConvF)^{1/2}$$

H-field probes:

$$H_i = (V_i)^{1/2} \cdot (a_{i0} + a_{i1}f + a_{i2}f^2) / f$$

With V_i = compensated signal of channel i ($i = x, y, z$)

$Norm_i$ = sensor sensitivity of channel i ($i = x, y, z$)

[mV/(V/m)²] for E-field Probes

ConvF = sensitivity enhancement in solution

a_{ij} = sensor sensitivity factors for H-field probes

f = carrier frequency [GHz]

E_i = electric field strength of channel i in V/m

H_i = magnetic field strength of channel i in A/m

The RSS value of the field components gives the total field strength (Hermitian magnitude):

$$E_{tot} = (E_x^2 + E_y^2 + E_z^2)^{1/2}$$

The primary field data are used to calculate the derived field units.

$$SAR = (E_{tot}^2 \cdot \sigma) / (\epsilon \cdot 1000)$$

With SAR = local specific absorption rate in mW/g

E_{tot} = total field strength in V/m

σ = conductivity in [mho/m] or [Siemens/m]

ϵ = equivalent tissue density in g/cm³

Note that the density is normally set to 1 (or 1.06), to account for actual brain density rather than the density of the simulation liquid. The power flow density is calculated assuming the excitation field to be a free space field.

$$P_{pwe} = E_{tot}^2 / 3770 \quad \text{or} \quad P_{pwe} = H_{tot}^2 \cdot 37.7$$

with P_{pwe} = equivalent power density of a plane wave in mW/cm²

E_{tot} = total electric field strength in V/m

H_{tot} = total magnetic field strength in A/m

4 SAR measurement variability and uncertainty

4.1 SAR measurement variability

Per KDB865664 D01 SAR measurement 100 MHz to 6 GHz v01r04, SAR measurement variability must be assessed for each frequency band, which is determined by the SAR probe calibration point and tissue-equivalent medium used for the device measurements. The additional measurements are repeated after the completion of all measurements requiring the same head or body tissue-equivalent medium in a frequency band. The test device should be returned to ambient conditions (normal room temperature) with the battery fully charged before it is re-mounted on the device holder for the repeated measurement(s) to minimize any unexpected variations in the repeated results.

- 1) Repeated measurement is not required when the original highest measured SAR is < 0.80 W/kg; steps 2) through 4) do not apply.
- 2) When the original highest measured SAR is ≥ 0.80 W/kg, repeat that measurement once.
- 3) Perform a second repeated measurement only if the ratio of largest to smallest SAR for the original and first repeated measurements is > 1.20 or when the original or repeated measurement is ≥ 1.45 W/kg (~ 10% from the 1-g SAR limit).
- 4) Perform a third repeated measurement only if the original, first or second repeated measurement is ≥ 1.5 W/kg and the ratio of largest to smallest SAR for the original, first and second repeated measurements is > 1.20 .

The same procedures should be adapted for measurements according to extremity and occupational exposure limits by applying a factor of 2.5 for extremity exposure and a factor of 5 for occupational exposure to the corresponding SAR thresholds.



Compliance Certification Services (Kunshan) Inc.

CCSEM-TRF-001 Rev. 02 Sep 01, 2023

Report No.: KSCR231000185801

Page: 21 of 70

4.2 SAR measurement uncertainty

Per KDB865664 D01 SAR Measurement 100 MHz to 6 GHz, when the highest measured 1-g SAR within a frequency band is < 1.5 W/kg (< 3.75 W/kg for 10g), the extensive SAR measurement uncertainty analysis described in IEEE Std 1528-2013 is not required in SAR reports submitted for equipment approval. The equivalent ratio (1.5/1.6) is applied to extremity and occupational exposure conditions.

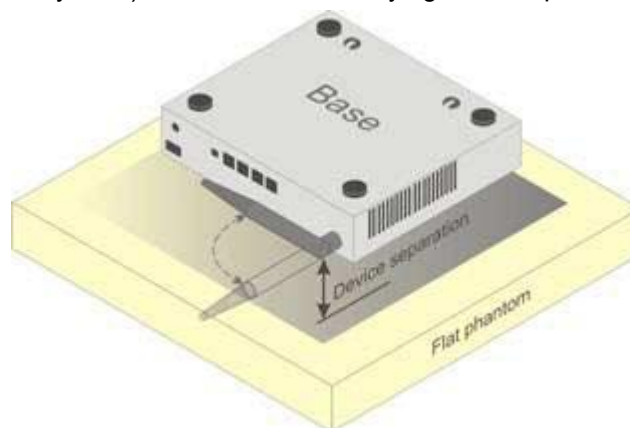
5 Description of Test Position

5.1 Extremity exposure conditions

Devices that are designed or intended for use on extremities, or mainly operated in extremity only exposure conditions, i.e., hands, wrists, feet and ankles, may require extremity SAR evaluation. When the device also operates in close proximity to the user's body, SAR compliance for the body is also required. The 1-g body and 10-g extremity SAR Test Exclusion Thresholds in 8.2 should be applied to determine SAR test requirements. When extremity SAR testing is required, a flat phantom must be used if the exposure condition is more conservative than the actual use conditions; otherwise, a KDB inquiry is required to determine the phantom and test requirements. Body SAR compliance is also tested with a flat phantom. For devices with irregular shapes or form factors that do not conform to a flat phantom, and/or unusual operating configurations and exposure conditions, a KDB inquiry is also required to determine the appropriate SAR measurement procedures. Unless it is specified differently in the published RF exposure KDB procedures, when simultaneous transmission applies to extremity exposure, the simultaneous transmission SAR test exclusion provisions should be applied. When simultaneous transmission SAR measurement is required, the enlarged zoom scan and volume scan post-processing procedures in KDB Publication 865664 D01 should be applied.

SAR can test the sides near the antenna, the surface of the device should be tested for SAR compliance with the device touching the phantom. The SAR Exclusion Threshold in KDB 447498 D04 can be applied to determine SAR test exclusion for adjacent edge configurations. The closest distance from the antenna to an adjacent device surface is used to determine if SAR testing is required for the adjacent surfaces, with the adjacent surface positioned against the phantom and the surface containing the antenna positioned perpendicular to the phantom.

For Hand-held mode(10g Extremity SAR) the EUT is set directly against the phantom and the test distance is 0mm.



6 SAR System Verification Procedure

6.1 Tissue Simulate Liquid

6.1.1 Recipes for Tissue Simulate Liquid

The following tables give the recipes for tissue simulating liquids to be used in different frequency bands:

Ingredients (% by weight)	Frequency (MHz)									
	450		835		915		1900		2450	
Tissue Type	Head	Body	Head	Body	Head	Body	Head	Body	Head	Body
Water	38.56	51.16	41.45	52.4	41.05	56.0	54.9	40.4	62.7	73.2
Salt (NaCl)	3.95	1.49	1.45	1.4	1.35	0.76	0.18	0.5	0.5	0.04
Sugar	56.32	46.78	56.0	45.0	56.5	41.76	0.0	58.0	0.0	0.0
HEC	0.98	0.52	1.0	1.0	1.0	1.21	0.0	1.0	0.0	0.0
Bactericide	0.19	0.05	0.1	0.1	0.1	0.27	0.0	0.1	0.0	0.0
Triton X-100	0.0	0.0	0.0	0.0	0.0	0.0	0.0	0.0	36.8	0.0
DGBE	0.0	0.0	0.0	0.0	0.0	0.0	44.92	0.0	0.0	26.7
Dielectric Constant	43.42	58.0	42.54	56.1	42.0	56.8	39.9	54.0	39.8	52.5
Conductivity (S/m)	0.85	0.83	0.91	0.95	1.0	1.07	1.42	1.45	1.88	1.78

HSL5GHz is composed of the following ingredients:

Water: 50-65%

Mineral oil: 10-30%

Emulsifiers: 8-25%

Sodium salt: 0-1.5%

MSL5GHz is composed of the following ingredients:

Water: 64-78%

Mineral oil: 11-18%

Emulsifiers: 9-15%

Sodium salt: 2-3%

6.1.2 Test Liquids Confirmation

Simulated tissue liquid parameter confirmation

The dielectric parameters were checked prior to assessment using the SPEAG DAK3.5 dielectric probe kit. The dielectric parameters measured are reported in each correspondent section.

IEEE SCC-34/SC-2 P1528 recommended tissue dielectric parameters

The head tissue dielectric parameters recommended by the IEEE SCC-34/SC-2 in P1528 have been incorporated in the following table. These head parameters are derived from planar layer models simulating the highest expected SAR for the dielectric properties and tissue thickness variations in a human head. Other head and body tissue parameters that have not been specified in P1528 are derived from the tissue dielectric parameters computed from the 4-Cole-Cole equations and extrapolated according to the head parameters specified in P1528

Target Frequency (MHz)	Head		Body	
	ϵ_r	σ (S/m)	ϵ_r	σ (S/m)
150	52.3	0.76	61.9	0.80
300	45.3	0.87	58.2	0.92
450	43.5	0.87	56.7	0.94
835	41.5	0.90	55.2	0.97
900	41.5	0.97	55.0	1.05
915	41.5	0.98	55.0	1.06
1450	40.5	1.20	54.0	1.30
1610	40.3	1.29	53.8	1.40
1800-2000	40.0	1.40	53.3	1.52
2450	39.2	1.80	52.7	1.95
3000	38.5	2.40	52.0	2.73
5800	35.3	5.27	48.2	6.00

(ϵ_r = relative permittivity, σ = conductivity and $\rho = 1000 \text{ kg/m}^3$)



Compliance Certification Services (Kunshan) Inc.

CCSEM-TRF-001 Rev. 02 Sep 01, 2023

Report No.: KSCR231000185801

Page: 25 of 70

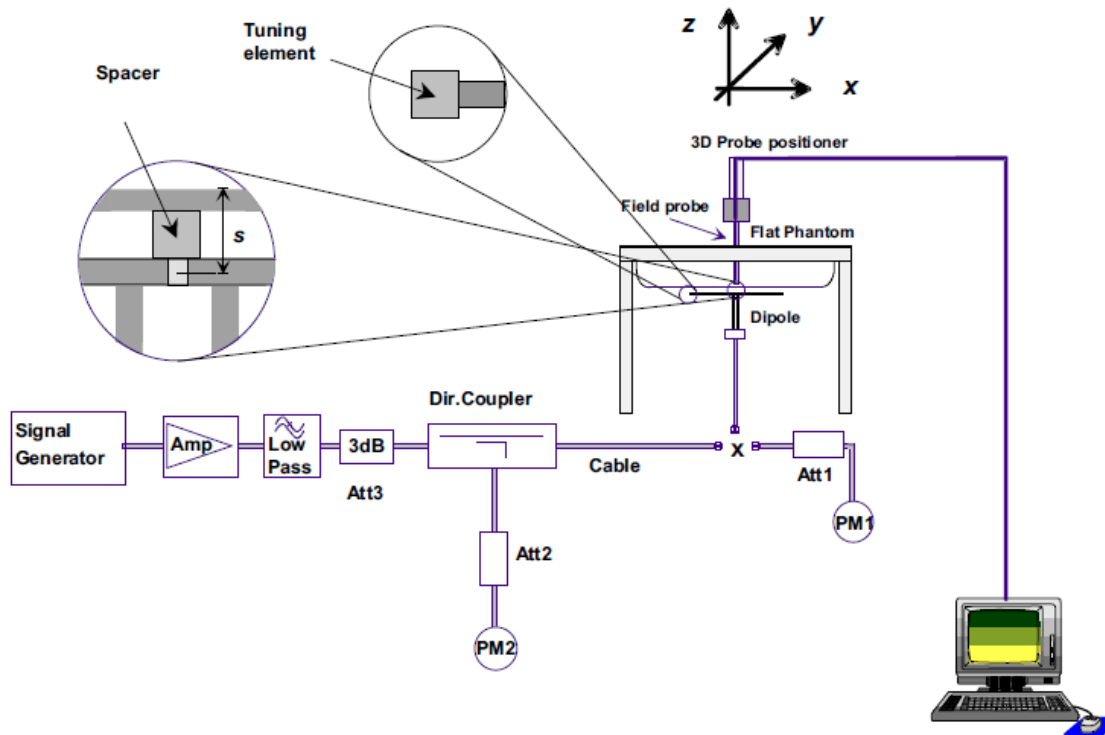
6.1.3 Measurement for Tissue Simulate Liquid

The dielectric properties for this Tissue Simulate Liquids were measured by using the SPEAG DAK3.5 dielectric probe kit in conjunction with Agilent Network Analyzer. The Conductivity (σ) and Permittivity (ρ) are listed in bellow table. For the SAR measurement given in this report. The temperature variation of the Tissue Simulate Liquids was $22\pm 2^\circ\text{C}$.

Tissue Type	Measured Frequency (MHz)	Conductivity (σ)	Permittivity (ϵ_r)	Conductivity Target (σ)	Permittivity Target (ϵ_r)	Delta (σ) (%)	Delta (ϵ_r) (%)	Limit (%)	Liquid Temp. ($^\circ\text{C}$)	Date
2450 Head	2450	1.79	40.36	1.80	39.20	-0.44	2.95	± 5	22.1	2023/11/14
5200 Head	5200	4.53	36.07	4.66	36.01	-2.90	0.16	± 5	22.2	2023/11/16
5800 Head	5800	5.30	34.81	5.28	35.24	0.28	-1.23	± 5	22.2	2023/11/18

6.2 SAR System Check

The microwave circuit arrangement for system check is sketched in bellow figure. The daily system accuracy verification occurs within the flat section of the SAM phantom. A SAR measurement was performed to see if the measured SAR was within +/- 10% from the target SAR values. The tests were conducted on the same days as the measurement of the EUT. The obtained results from the system accuracy verification are displayed in the following table. During the tests, the ambient temperature of the laboratory was in the range $22\pm 2^{\circ}\text{C}$, the relative humidity was in the range 60% and the liquid depth above the ear reference points was above 15 cm in all the cases. It is seen that the system is operating within its specification, as the results are within acceptable tolerance of the reference values.



F-3. the microwave circuit arrangement used for SAR system verification

6.2.1 Justification for Extended SAR Dipole Calibrations

1) Referring to KDB865664 D01 requirements for dipole calibration, instead of the typical annual calibration recommended by measurement standards, longer calibration intervals of up to three years may be considered when it is demonstrated that the SAR target, impedance and return loss of a dipole have remain stable according to the following requirements. Each measured dipole is expected to evaluate with the following criteria at least on annual interval in Appendix C.

- a) There is no physical damage on the dipole;
- b) System check with specific dipole is within 10% of calibrated value;
- c) Return-loss is within 10% of calibrated measurement;
- d) Impedance is within 5Ω from the previous measurement.

2) Network analyzer probe calibration against air, distilled water and a shorting block performed before measuring liquid parameters.

6.2.2 Summary System Check Result(s)

Validation Kit		Measured SAR 250mW	Measured SAR 250mW	Measured SAR (normalized to 1w)	Measured SAR (normalized to 1w)	Target SAR (normalized to 1w) (±10%)	Target SAR (normalized to 1w) (±10%)	Liquid Temp. (°C)	Measured Date
		1g (W/kg)	10g (W/kg)	1g (W/kg)	10g (W/kg)	1-g(W/kg)	10-g(W/kg)		
D2450V2	Head	13.5	6.41	54.0	25.64	53 (47.70~58.30)	24.7 (22.23~27.17)	22.1	2023/11/14
Validation Kit		Measured SAR 100mW	Measured SAR 100mW	Measured SAR (normalized to 1w)	Measured SAR (normalized to 1w)	Target SAR (normalized to 1w) (±10%)	Target SAR (normalized to 1w) (±10%)	Liquid Temp. (°C)	Measured Date
		1g (W/kg)	10g (W/kg)	1g (W/kg)	10g (W/kg)	1-g(W/kg)	10-g(W/kg)		
D5GHzV2	Head(5.2GHz)	8.22	2.25	82.2	22.5	77.6 (69.84~85.36)	22.1 (19.35~23.65)	22.2	2023/11/16
	Head(5.8GHz)	8.12	2.16	81.2	21.6	76.7 (69.03~84.37)	21.5 (19.35~23.65)	22.2	2023/11/18

6.2.3 Detailed System Check Results

Please see the Appendix A

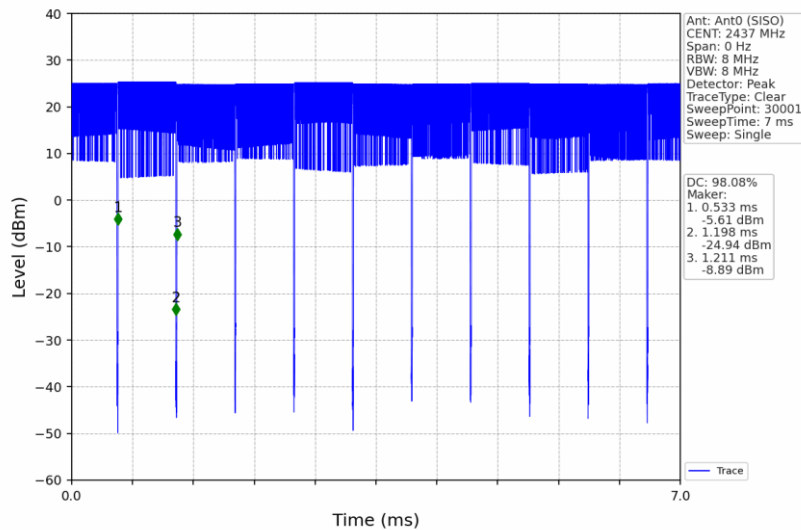
7 Test Configuration

7.1.1 Wi-Fi Test Configuration

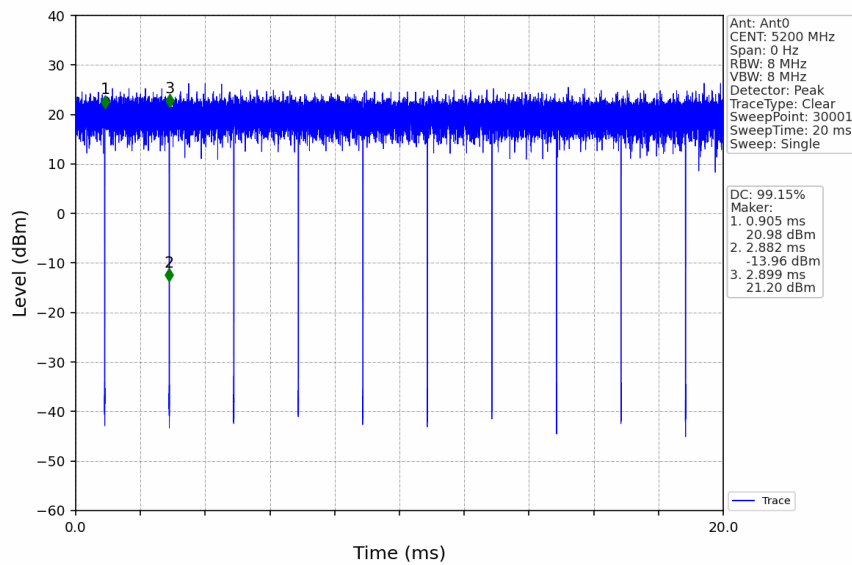
A Wi-Fi device must be configured to transmit continuously at the required data rate, channel bandwidth and signal modulation, using the highest transmission duty factor supported by the test mode tools for SAR measurement.

7.1.1.1 Duty cycle

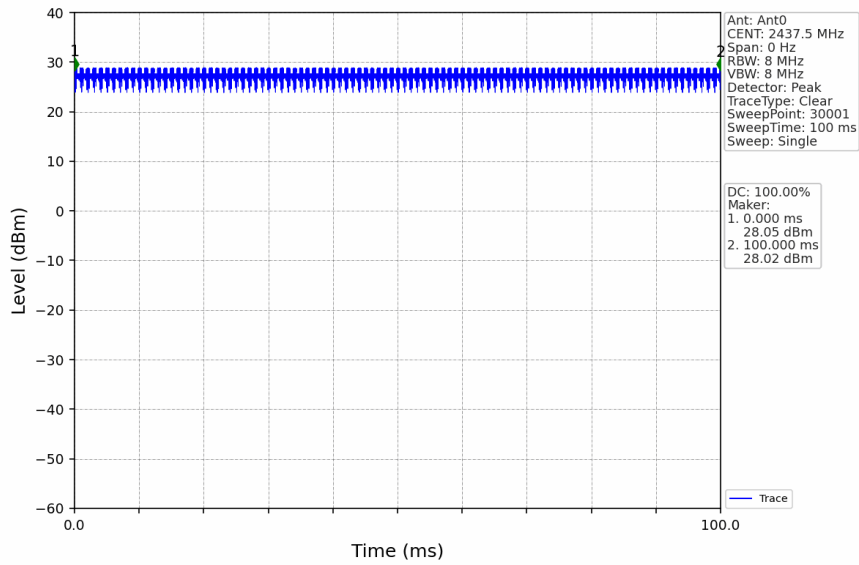
WI-FI 802.11b: Duty cycle= 98.08%



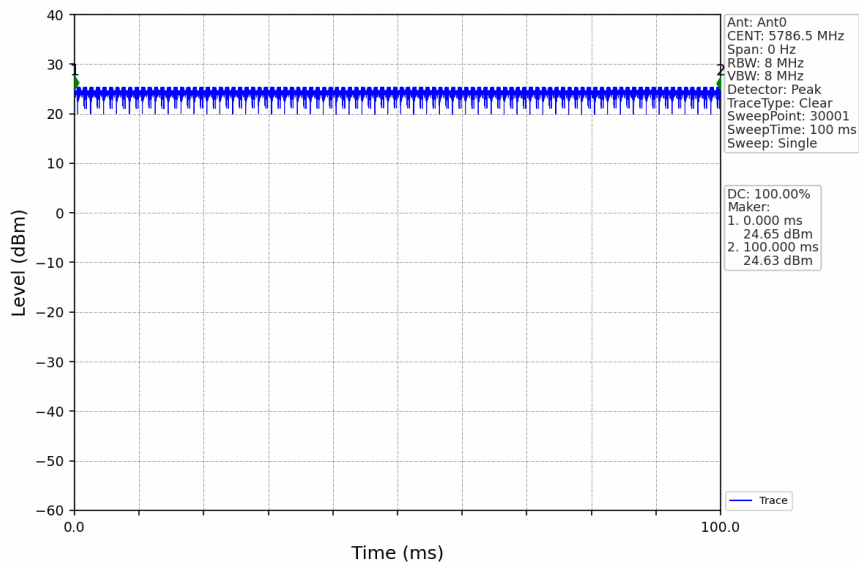
WI-FI 802.11a: Duty cycle= 99.15%



SRD: Duty cycle= 100%



SRD: Duty cycle= 100%



7.1.1.2 Initial Test Position SAR Test Reduction Procedure

DSSS and OFDM configurations are considered separately according to the required SAR procedures. SAR is measured in the initial test position using the 802.11 transmission mode configuration required by the DSSS procedure or initial test configuration and subsequent test configuration(s) according to the OFDM procedures. The initial test position procedure is described in the following:

- 1) .When the reported SAR of the initial test position is ≤ 0.4 W/kg, further SAR measurement is not required for the other (remaining) test positions in that exposure configuration and 802.11 transmission mode combinations within the frequency band or aggregated band. SAR is also not required for that exposure configuration in the subsequent test configuration(s).
- 2) .When the reported SAR of the initial test position is > 0.4 W/kg, SAR is repeated for the 802.11 transmission mode configuration tested in the initial test position using subsequent highest extrapolated or estimated 1-g SAR conditions determined by area scans or next closest/smallest test separation distance and maximum RF coupling test positions based on manufacturer justification, on the highest maximum output power channel, until the reported SAR is ≤ 0.8 W/kg or all required test positions (left, right, touch, tilt or subsequent surfaces and edges) are tested.
- 3) .For all positions/configurations tested using the initial test position and subsequent test positions, when the reported SAR is > 0.8 W/kg, SAR is measured for these test positions/configurations on the subsequent next highest measured output power channel(s) until the reported SAR is ≤ 1.2 W/kg or all required channels are tested. a) Additional power measurements may be required for this step, which should be limited to those necessary for identifying the subsequent highest output power channels.

7.1.1.3 Initial Test Configuration Procedures

An initial test configuration is determined for OFDM transmission modes according to the channel bandwidth, modulation and data rate combination(s) with the highest maximum output power specified for production units in each standalone and aggregated frequency band. SAR is measured using the highest measured maximum output power channel. For configurations with the same specified or measured maximum output power, additional transmission mode and test channel selection procedures are required. SAR test reduction for subsequent highest output test channels is determined according to *reported* SAR of the initial test configuration.

For next to the ear, hotspot mode and UMC mini-tablet exposure configurations where multiple test positions are required, the initial test position procedure is applied to minimize the number of test positions required for SAR measurement using the initial test configuration transmission mode. For fixed exposure conditions that do not have multiple SAR test positions, SAR is measured in the transmission mode determined by the initial test configuration.

When the *reported* SAR of the initial test configuration is > 0.8 W/kg, SAR measurement is required for subsequent next highest measured output power channel(s) in the initial test configuration until *reported* SAR is ≤ 1.2 W/kg or all required channels are tested.

7.1.1.4 Subsequent Test Configuration Procedures

SAR measurement requirements for the remaining 802.11 transmission mode configurations that have not been tested in the initial test configuration are determined separately for each standalone and aggregated frequency band, in each exposure condition, according to the maximum output power specified for production units. The initial test position procedure is applied to next to the ear, UMPC mini-tablet and hotspot mode configurations. When the same maximum output power is specified for multiple transmission modes, additional power measurements may be required to determine if SAR measurements are required for subsequent highest output power channels in a subsequent test configuration. The subsequent test configuration and SAR measurement procedures are described in the following.

- 1) . When SAR test exclusion provisions of KDB Publication 447498 are applicable and SAR measurement is not required for the initial test configuration, SAR is also not required for the next highest maximum output power transmission mode subsequent test configuration(s) in that frequency band or aggregated band and exposure configuration.

- 2) . When the highest *reported* SAR for the initial test configuration (when applicable, include subsequent highest output channels), according to the initial test position or fixed exposure position requirements, is adjusted by the ratio of the subsequent test configuration to initial test configuration specified maximum output power and the adjusted SAR is ≤ 1.2 W/kg, SAR is not required for that subsequent test configuration.
- 3) . The number of channels in the initial test configuration and subsequent test configuration can be different due to differences in channel bandwidth. When SAR measurement is required for a subsequent test configuration and the channel bandwidth is smaller than that in the initial test configuration, all channels in the subsequent test configuration that overlap with the larger bandwidth channel tested in the initial test configuration should be used to determine the highest maximum output power channel. This step requires additional power measurement to identify the highest maximum output power channel in the subsequent test configuration to determine SAR test reduction.
 - a) SAR should first be measured for the channel with highest measured output power in the subsequent test configuration.
 - b) SAR for subsequent highest measured maximum output power channels in the subsequent test configuration is required only when the *reported* SAR of the preceding higher maximum output power channel(s) in the subsequent test configuration is > 1.2 W/kg or until all required channels are tested. i) For channels with the same measured maximum output power, SAR should be measured using the channel closest to the center frequency of the larger channel bandwidth channel in the initial test configuration.
- 4) . SAR measurements for the remaining highest specified maximum output power OFDM transmission mode configurations that have not been tested in the initial test configuration (highest maximum output) or subsequent test configuration(s) (subsequent next highest maximum output power) is determined by recursively applying the subsequent test configuration procedures in this section to the remaining configurations according to the following:
 - a) replace “subsequent test configuration” with “next subsequent test configuration” (i.e., subsequent next highest specified maximum output power configuration)
 - b) replace “initial test configuration” with “all tested higher output power configurations”

7.1.1.5 2.4 GHz Wi-Fi SAR Procedures

Separate SAR procedures are applied to DSSS and OFDM configurations in the 2.4 GHz band to simplify DSSS test requirements. For 802.11b DSSS SAR measurements, DSSS SAR procedure applies to fixed exposure test position and initial test position procedure applies to multiple exposure test positions. When SAR measurement is required for an OFDM configuration, the initial test configuration, subsequent test configuration and initial test position procedures are applied. The SAR test exclusion requirements for 802.11g/n OFDM configurations are described in following.

- **802.11b DSSS SAR Test Requirements**

SAR is measured for 2.4 GHz 802.11b DSSS using either a fixed test position or, when applicable, the initial test position procedure. SAR test reduction is determined according to the following:

- 1) . When the reported SAR of the highest measured maximum output power channel for the exposure configuration is ≤ 0.8 W/kg, no further SAR testing is required for 802.11b DSSS in that exposure configuration.
- 2) . When the reported SAR is > 0.8 W/kg, SAR is required for that exposure configuration using the next highest measured output power channel. When any reported SAR is > 1.2 W/kg, SAR is required for the third channel; i.e., all channels require testing.

- **2.4 GHz 802.11g/n OFDM SAR Test Exclusion Requirements**

When SAR measurement is required for 2.4 GHz 802.11g/n OFDM configurations, the measurement and test reduction procedures for OFDM are applied (section 5.3, including sub-sections). SAR is not required for the following 2.4 GHz OFDM conditions.

- 1) . When KDB Publication 447498 SAR test exclusion applies to the OFDM configuration.
- 2) . When the highest reported SAR for DSSS is adjusted by the ratio of OFDM to DSSS specified maximum output power and the adjusted SAR is ≤ 1.2 W/kg.

7.1.1.6 5 GHz Wi-Fi SAR Procedures

- **U-NII-1 and U-NII-2A Bands**

For devices that operate in only one of the U-NII-1 and U-NII-2A bands, the normally required SAR procedures for OFDM configurations are applied. For devices that operate in both U-NII bands using the same transmitter and antenna(s), SAR test reduction is determined according to the following:

- 1) When the same maximum output power is specified for both bands, begin SAR measurement in U-NII-2A band by applying the OFDM SAR requirements. If the highest reported SAR for a test configuration is ≤ 1.2 W/kg, SAR is not required for U-NII-1 band for that configuration (802.11 mode and exposure condition); otherwise, both bands are tested independently for SAR.
- 2) When different maximum output power is specified for the bands, begin SAR measurement in the band with higher specified maximum output power. The highest reported SAR for the tested configuration is adjusted by the ratio of lower to higher specified maximum output power for the two bands. When the adjusted SAR is ≤ 1.2 W/kg, SAR is not required for the band with lower maximum output power in that test configuration; otherwise, both bands are tested independently for SAR.
- 3) The two U-NII bands may be aggregated to support a 160 MHz channel on channel number 50. Without additional testing, the maximum output power for this is limited to the lower of the maximum output power certified for the two bands. When SAR measurement is required for at least one of the bands and the highest reported SAR adjusted by the ratio of specified maximum output power of aggregated to standalone band is > 1.2 W/kg, SAR is required for the 160 MHz channel. This procedure does not apply to an aggregated band with maximum output higher than the standalone band(s); the aggregated band must be tested independently for SAR. SAR is not required when the 160 MHz channel is operating at a reduced maximum power and also qualifies for SAR test exclusion.

- **U-NII-2C and U-NII-3 Bands**

The frequency range covered by these bands is 380 MHz (5.47 – 5.85 GHz), which requires a minimum of at least two SAR probe calibration frequency points to support SAR measurements. when Terminal Doppler Weather Radar (TDWR) restriction applies, all channels that operate at 5.60 – 5.65 GHz must be included to apply the SAR test reduction and measurement procedures.

When the same transmitter and antenna(s) are used for U-NII-2C band and U-NII-3 band or 5.8 GHz band of §15.247, the bands may be aggregated to enable additional channels with 20, 40 or 80 MHz bandwidth to span across the band gap, as illustrated in Appendix B. The maximum output power for the additional band gap channels is limited to the lower of those certified for the bands. Unless band gap channels are permanently disabled, they must be considered for SAR testing. The frequency range covered by these bands is 380 MHz (5.47 – 5.85 GHz), which requires a minimum of at least two SAR probe calibration frequency points to support SAR measurements. To maintain SAR measurement accuracy and to facilitate test reduction, the channels in U-NII-2C band above 5.65 GHz may be grouped with the 5.8 GHz channels in U-NII-3 or §15.247 band to enable two SAR probe calibration frequency points to cover the bands, including the band gap channels. When band gap channels are supported and the bands are not aggregated for SAR testing, band gap channels must be considered independently in each band according to the normally required OFDM SAR measurement and probe calibration frequency points requirements.

- **OFDM Transmission Mode SAR Test Configuration and Channel Selection Requirements**

The initial test configuration for 5 GHz OFDM transmission modes is determined by the 802.11 configuration with the highest maximum output power specified for production units, including tune-up tolerance, in each standalone and aggregated frequency band. SAR for the initial test configuration is measured using the highest maximum output power channel determined by the default power measurement procedures. When multiple configurations in a frequency band have the same specified maximum output power, the initial test configuration is determined according to the following steps applied sequentially.

- 1) The largest channel bandwidth configuration is selected among the multiple configurations with the same specified maximum output power.
- 2) If multiple configurations have the same specified maximum output power and largest channel bandwidth, the lowest order modulation among the largest channel bandwidth configurations is selected.
- 3) If multiple configurations have the same specified maximum output power, largest channel bandwidth and lowest order modulation, the lowest data rate configuration among these configurations is selected.
- 4) When multiple transmission modes (802.11a/g/n/ac) have the same specified maximum output power,

Compliance Certification Services (Kunshan) Inc.

CCSEM-TRF-001 Rev. 02 Sep 01, 2023

Report No.: KSCR231000185801

Page: 34 of 70

largest channel bandwidth, lowest order modulation and lowest data rate, the lowest order 802.11 mode is selected; i.e., 802.11a is chosen over 802.11n then 802.11ac or 802.11g is chosen over 802.11n. After an initial test configuration is determined, if multiple test channels have the same measured maximum output power, the channel chosen for SAR measurement is determined according to the following. These channel selection procedures apply to both the initial test configuration and subsequent test configuration(s), with respect to the default power measurement procedures or additional power measurements required for further SAR test reduction. The same procedures also apply to subsequent highest output power channel(s) selection.

- a) The channel closest to mid-band frequency is selected for SAR measurement.
- b) For channels with equal separation from mid-band frequency; for example, high and low channels or two mid-band channels, the higher frequency (number) channel is selected for SAR measurement.

- **SAR Test Requirements for OFDM configurations**

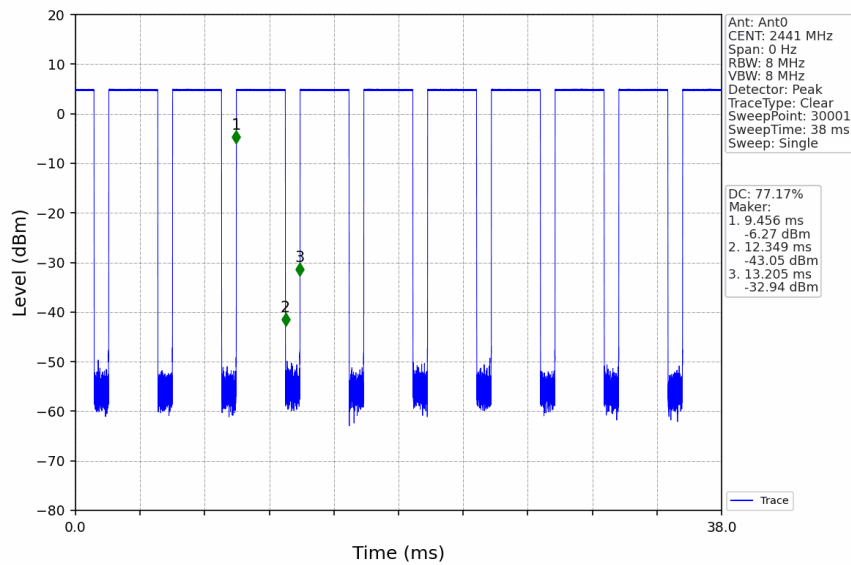
When SAR measurement is required for 802.11 a/n/ac OFDM configurations, each standalone and frequency aggregated band is considered separately for SAR test reduction. When the same transmitter and antenna(s) are used for U-NII-1 and U-NII-2A bands, additional SAR test reduction applies. When band gap channels between U-NII-2C band and 5.8 GHz U-NII-3 or §15.247 band are supported, the highest maximum output power transmission mode configuration and maximum output power channel across the bands must be used to determine SAR test reduction, according to the initial test configuration and subsequent test configuration requirements. In applying the initial test configuration and subsequent test configuration procedures, the 802.11 transmission configuration with the highest specified maximum output power and the channel within a test configuration with the highest measured maximum output power should be clearly distinguished to apply the procedures.

7.1.2 BluetoothTest Configuration

For the Bluetooth SAR tests, a communication link is set up with the test mode software for BT mode test. Bluetooth USES frequency hopping technology to divide the transmitted data into packets and transmit the packets respectively through 79 designated Bluetooth channels, 1MHz Bandwidth, frequency hops at 1600 hops/second per the Bluetooth standard. The Radio Frequency Channel Number (RFCN) is allocated to 0, 39 and 78 respectively in the case of 2402~2480 MHz during the test at each test frequency channel, the EUT is operated at the RF continuous emission mode.

7.1.2.1 Duty cycle

Bluetooth duty cycle: 77.17%



8 Test Result

8.1 Measurement of RF Conducted Power

8.1.1 Conducted Power Of WiFi 2.4G

ANT0

Mode	Channel	Frequency (MHz)	Data Rate (Mbps)	Average Power (dBm)	Tune up
802.11b	1	2412	1	20.80	22.00
	6	2437		21.24	22.00
	11	2462		20.52	22.00
802.11g	1	2412	6	18.81	20.00
	6	2437		19.17	20.00
	11	2462		19.42	20.00
802.11n HT20	1	2412	6.5	18.44	19.50
	6	2437		18.84	19.50
	11	2462		17.83	19.50
802.11n HT40	3	2422	13.5	17.72	19.00
	6	2437		19.35	20.00
	9	2452		17.27	18.00
802.11ax HT20	1	2412	MCS0	18.54	19.00
	6	2437		18.83	19.50
	11	2462		17.95	18.50
802.11ax HT40	3	2422	MCS0	17.49	18.50
	6	2437		19.03	19.50
	9	2452		16.95	17.50

ANT1

Mode	Channel	Frequency (MHz)	Data Rate (Mbps)	Average Power (dBm)	Tune up
802.11b	1	2412	1	20.00	22.00
	6	2437		21.12	22.00
	11	2462		20.65	22.00
802.11g	1	2412	6	18.46	20.00
	6	2437		18.69	20.00
	11	2462		19.04	20.00
802.11n HT20	1	2412	6.5	18.20	19.50
	6	2437		18.25	19.50
	11	2462		17.62	19.50
802.11n HT40	3	2422	13.5	17.82	19.00
	6	2437		18.83	20.00
	9	2452		16.98	18.00
802.11ax HT20	1	2412	MCS0	18.28	19.00
	6	2437		18.74	19.50
	11	2462		18.21	18.50
802.11ax HT40	3	2422	MCS0	17.50	18.50
	6	2437		18.83	19.50
	9	2452		17.00	17.50



Compliance Certification Services (Kunshan) Inc.

CCSEM-TRF-001 Rev. 02 Sep 01, 2023

Report No.: KSCR231000185801

Page: 37 of 70

MIMO

Mode	Channel	Frequency (MHz)	Data Rate (Mbps)	Average Power (dBm)	Tune up
802.11b	1	2412	1	/	/
	6	2437		/	/
	11	2462		/	/
802.11g	1	2412	6	/	/
	6	2437		/	/
	11	2462		/	/
802.11n HT20	1	2412	6.5	21.33	22.00
	6	2437		21.57	22.00
	11	2462		20.74	22.00
802.11n HT40	3	2422	13.5	20.78	22.00
	6	2437		22.11	23.00
	9	2452		20.14	22.00
802.11ax HT20	1	2412	MCS0	21.42	22.00
	6	2437		21.80	22.00
	11	2462		21.09	22.00
802.11ax HT40	3	2422	MCS0	20.51	22.00
	6	2437		21.94	22.50
	9	2452		19.99	21.00

8.1.2 Conducted Power Of WiFi 5G

ANTO

5GHz	mode	Channel	Frequency (MHz)	Data Rate (Mbps)	Average Power (dBm)	Tune up
802.11a	U-NII-1	36	5180	6	18.63	19.50
		40	5200		19.11	19.50
		48	5240		19.08	19.50
	U-NII-3	149	5745		18.24	19.50
		157	5785		19.13	19.50
		165	5825		19.07	19.50
5GHz	mode	Channel	Frequency (MHz)	Data Rate (Mbps)	Average Power (dBm)	Tune up
802.11n-HT20	U-NII-1	36	5180	MCS0	16.01	17.00
		40	5200		16.24	17.00
		48	5240		16.53	17.00
	U-NII-3	149	5745		16.91	18.50
		157	5785		17.26	18.50
		165	5825		17.74	18.50
5GHz	mode	Channel	Frequency (MHz)	Data Rate (Mbps)	Average Power (dBm)	Tune up
802.11n-HT40	U-NII-1	38	5190	MCS0	17.45	18.50
		46	5230		17.82	18.50
	U-NII-3	151	5755		17.15	18.50
		159	5795		17.78	18.50
5GHz	mode	Channel	Frequency (MHz)	Data Rate (Mbps)	Average Power (dBm)	Tune up
802.11ac-20	U-NII-1	36	5180	MCS0	16.03	17.00
		40	5200		16.22	17.00
		48	5240		16.53	17.00
	U-NII-3	149	5745		15.84	17.00
		157	5785		16.23	17.00
		165	5825		16.75	17.00
5GHz	mode	Channel	Frequency (MHz)	Data Rate (Mbps)	Average Power (dBm)	Tune up
802.11ac-40	U-NII-1	38	5190	MCS0	16.52	17.50
		46	5230		16.87	17.50
	U-NII-3	151	5755		16.05	17.50
		159	5795		16.68	17.50
5GHz	mode	Channel	Frequency (MHz)	Data Rate (Mbps)	Average Power (dBm)	Tune up
802.11ac 80M	U-NII-1	42	5210	MCS0	16.42	17.50
	U-NII-3	155	5775		14.60	16.00
5GHz	mode	Channel	Frequency (MHz)	Data Rate (Mbps)	Average Power (dBm)	Tune up
802.11ax-20	U-NII-1	36	5180	MCS0	16.24	18.00
		40	5200		16.40	18.00
		48	5240		16.58	18.00
	U-NII-3	149	5745		16.75	18.00



Compliance Certification Services (Kunshan) Inc.

CCSEM-TRF-001 Rev. 02 Sep 01, 2023

Report No.: KSCR231000185801

Page: 39 of 70

5GHz	mode	Channel	Frequency (MHz)	Data Rate (Mbps)	Average Power (dBm)	Tune up
		157	5785		17.14	18.00
		165	5825		17.84	18.00
802.11ax-40	U-NII-1	38	5190	MCS0	17.27	18.00
		46	5230		17.47	18.00
	U-NII-3	151	5755		16.58	18.00
		159	5795		17.24	18.00
802.11ax 80M	U-NII-1	42	5210	MCS0	17.25	18.00
	U-NII-3	155	5775		16.69	18.00

ANT1

5GHz	mode	Channel	Frequency (MHz)	Data Rate (Mbps)	Average Power (dBm)	Tune up
802.11a	U-NII-1	36	5180	6	19.23	19.50
		40	5200		19.30	19.50
		48	5240		18.89	19.50
	U-NII-3	149	5745		18.79	19.50
		157	5785		19.21	19.50
		165	5825		19.13	19.50
802.11n-HT20	U-NII-1	36	5180		MCS0	16.64
		40	5200	16.68		17.00
		48	5240	16.35		17.00
	U-NII-3	149	5745	17.48		18.50
		157	5785	17.66		18.50
		165	5825	17.84		18.50
802.11n-HT40	U-NII-1	38	5190	MCS0	18.14	18.50
		46	5230		17.88	18.50
	U-NII-3	151	5755		17.92	18.50
		159	5795		18.00	18.50
802.11ac-20	U-NII-1	36	5180	MCS0	16.64	17.00
		40	5200		16.67	17.00
		48	5240		16.35	17.00
	U-NII-3	149	5745		16.40	17.00
		157	5785		16.61	17.00
		165	5825		16.85	17.00
802.11ac-40	U-NII-1	38	5190	MCS0	17.24	17.50
		46	5230		16.92	17.50
	U-NII-3	151	5755		16.80	17.50



Compliance Certification Services (Kunshan) Inc.

CCSEM-TRF-001 Rev. 02 Sep 01, 2023

Report No.: KSCR231000185801

Page: 40 of 70

5GHz	mode	Channel	Frequency (MHz)	Data Rate (Mbps)	Average Power (dBm)	Tune up
		159	5795		16.94	17.50
802.11ac 80M	U-NII-1	42	5210	MCS0	16.85	17.50
	U-NII-3	155	5775		15.21	16.00
5GHz	mode	Channel	Frequency (MHz)	Data Rate (Mbps)	Average Power (dBm)	Tune up
802.11ax-20	U-NII-1	36	5180	MCS0	17.16	18.00
		40	5200		16.90	18.00
		48	5240		16.64	18.00
	U-NII-3	149	5745		17.67	18.00
		157	5785		17.94	18.00
		165	5825		18.13	18.00
5GHz	mode	Channel	Frequency (MHz)	Data Rate (Mbps)	Average Power (dBm)	Tune up
802.11ax-40	U-NII-1	38	5190	MCS0	18.06	18.00
		46	5230		17.62	18.00
	U-NII-3	151	5755		17.70	18.00
		159	5795		17.81	18.00
5GHz	mode	Channel	Frequency (MHz)	Data Rate (Mbps)	Average Power (dBm)	Tune up
802.11ax 80M	U-NII-1	42	5210	MCS0	17.74	18.00
	U-NII-3	155	5775		17.59	18.00



Compliance Certification Services (Kunshan) Inc.

CCSEM-TRF-001 Rev. 02 Sep 01, 2023

Report No.: KSCR231000185801

Page: 41 of 70

MIMO

5GHz	mode	Channel	Frequency (MHz)	Data Rate (Mbps)	Average Power (dBm)	Tune up
802.11a	U-NII-1	36	5180	6	/	/
		40	5200		/	/
		48	5240		/	/
	U-NII-3	149	5745		/	/
		157	5785		/	/
		165	5825		/	/
5GHz	mode	Channel	Frequency (MHz)	Data Rate (Mbps)	Average Power (dBm)	Tune up
802.11n-HT20	U-NII-1	36	5180	MCS0	19.35	20.00
		40	5200		19.48	20.00
		48	5240		19.45	20.00
	U-NII-3	149	5745		20.21	21.00
		157	5785		20.47	21.00
		165	5825		20.80	21.00
5GHz	mode	Channel	Frequency (MHz)	Data Rate (Mbps)	Average Power (dBm)	Tune up
802.11n-HT40	U-NII-1	38	5190	MCS0	20.82	21.00
		46	5230		20.86	21.00
	U-NII-3	151	5755		20.56	21.00
		159	5795		20.90	21.00
5GHz	mode	Channel	Frequency (MHz)	Data Rate (Mbps)	Average Power (dBm)	Tune up
802.11ac-20	U-NII-1	36	5180	MCS0	19.36	20.50
		40	5200		19.46	20.50
		48	5240		19.45	20.50
	U-NII-3	149	5745		19.14	20.50
		157	5785		19.43	20.50
		165	5825		19.81	20.50
5GHz	mode	Channel	Frequency (MHz)	Data Rate (Mbps)	Average Power (dBm)	Tune up
802.11ac-40	U-NII-1	38	5190	MCS0	19.91	20.50
		46	5230		19.91	20.50
	U-NII-3	151	5755		19.45	20.50
		159	5795		19.82	20.50
5GHz	mode	Channel	Frequency (MHz)	Data Rate (Mbps)	Average Power (dBm)	Tune up
802.11ac 80M	U-NII-1	42	5210	MCS0	19.65	20.50
	U-NII-3	155	5775		17.93	18.50
5GHz	mode	Channel	Frequency (MHz)	Data Rate (Mbps)	Average Power (dBm)	Tune up
802.11ax-20	U-NII-1	36	5180	MCS0	19.73	21.00
		40	5200		19.67	21.00
		48	5240		19.62	21.00
	U-NII-3	149	5745		20.24	21.00
		157	5785		20.57	21.00
		165	5825		21.00	21.50



Compliance Certification Services (Kunshan) Inc.

CCSEM-TRF-001 Rev. 02 Sep 01, 2023

Report No.: KSCR231000185801

Page: 42 of 70

5GHz	mode	Channel	Frequency (MHz)	Data Rate (Mbps)	Average Power (dBm)	Tune up
802.11ax-40	U-NII-1	38	5190	MCS0	20.69	21.00
		46	5230		20.56	21.00
	U-NII-3	151	5755		20.19	21.00
		159	5795		20.54	21.00
5GHz	mode	Channel	Frequency (MHz)	Data Rate (Mbps)	Average Power (dBm)	Tune up
802.11ax 80M	U-NII-1	42	5210	MCS0	20.51	21.00
	U-NII-3	155	5775		20.17	21.00

Note:

- a) Power must be measured at each transmit antenna port according to the DSSS and OFDM transmission configurations in each standalone and aggregated frequency band.
- b) Power measurement is required for the transmission mode configuration with the highest maximum output power specified for production units.
 - 1) When the same highest maximum output power specification applies to multiple transmission modes, the largest channel bandwidth configuration with the lowest order modulation and lowest data rate is measured.
 - 2) When the same highest maximum output power is specified for multiple largest channel bandwidth configurations with the same lowest order modulation or lowest order modulation and lowest data rate, power measurement is required for all equivalent 802.11 configurations with the same maximum output power.
- c) For each transmission mode configuration, power must be measured for the highest and lowest channels; and at the mid-band channel(s) when there are at least 3 channels. For configurations with multiple mid-band channels, due to an even number of channels, both channels should be measured.



Compliance Certification Services (Kunshan) Inc.

CCSEM-TRF-001 Rev. 02 Sep 01, 2023

Report No.: KSCR231000185801

Page: 43 of 70

8.1.3 Conducted Power Of SDR 2.4GHz

ANT0

Mode	Frequency (MHz)	Average Power (dBm)	Tune up
1.4M	2409.5	25.69	26.00
	2437.5	24.78	26.00
	2465.12	24.81	26.00
3M	2410.5	25.54	26.00
	2437.5	25.61	26.00
	2464.2	24.87	26.00
10M	2405.5	15.84	17.00
	2441.5	15.90	17.00
	2476.5	16.65	17.00
20M	2410.5	15.65	17.00
	2441.5	15.65	17.00
	2472.5	15.56	17.00
40M	2422.5	15.71	17.00
	2437.5	15.94	17.00
	2452.5	16.38	17.00

ANT1

Mode	Frequency (MHz)	Average Power (dBm)	Tune up
1.4M	2409.5	26.55	27.00
	2437.5	25.90	27.00
	2465.12	26.03	27.00
3M	2410.5	26.09	27.00
	2437.5	26.66	27.00
	2464.2	25.10	27.00
10M	2405.5	16.39	17.00
	2441.5	15.80	17.00
	2476.5	15.81	17.00
20M	2410.5	15.28	17.00
	2441.5	16.27	17.00
	2472.5	15.82	17.00
40M	2422.5	16.29	17.00
	2437.5	16.2	17.00
	2452.5	16.09	17.00



Compliance Certification Services (Kunshan) Inc.

CCSEM-TRF-001 Rev. 02 Sep 01, 2023

Report No.: KSCR231000185801

Page: 44 of 70

MIMO

Mode	Frequency (MHz)	Average Power (dBm)	Tune up
1.4M	2409.5	25.86	27.00
	2437.5	26.20	27.00
	2465.12	25.62	27.00
3M	2410.5	25.99	27.00
	2437.5	26.09	27.00
	2464.2	25.99	27.00
10M	2405.5	16.16	17.00
	2441.5	15.84	17.00
	2476.5	16.20	17.00
20M	2410.5	15.47	17.00
	2441.5	15.88	17.00
	2472.5	15.60	17.00
40M	2422.5	16.04	17.00
	2437.5	15.98	17.00
	2452.5	15.57	17.00



Compliance Certification Services (Kunshan) Inc.

CCSEM-TRF-001 Rev. 02 Sep 01, 2023

Report No.: KSCR231000185801

Page: 45 of 70

8.1.4 Conducted Power Of SDR 5.8GHz

ANT0

Mode	Frequency (MHz)	Average Power (dBm)	Tune up
1.4M	5728.50	26.83	28.00
	5786.50	27.18	28.00
	5848.12	26.50	28.00
3M	5727.50	25.65	27.00
	5784.50	25.48	27.00
	5847.20	25.87	27.00
10M	5730.50	16.47	18.00
	5787.50	16.18	18.00
	5844.50	16.74	18.00
20M	5735.50	16.62	18.00
	5787.50	16.75	18.00
	5839.50	17.25	18.00
40M	5745.50	16.94	18.00
	5787.50	16.79	18.00
	5829.50	16.22	18.00

ANT1

Mode	Frequency (MHz)	Average Power (dBm)	Tune up
1.4M	5728.50	26.78	27.00
	5786.50	26.88	27.00
	5848.12	26.63	27.00
3M	5727.50	25.02	26.00
	5784.50	25.33	26.00
	5847.20	25.05	26.00
10M	5730.50	16.57	17.00
	5787.50	16.70	17.00
	5844.50	16.76	17.00
20M	5735.50	16.58	17.00
	5787.50	16.82	17.00
	5839.50	15.93	17.00
40M	5745.50	16.61	17.00
	5787.50	16.54	17.00
	5829.50	16.05	17.00



Compliance Certification Services (Kunshan) Inc.

CCSEM-TRF-001 Rev. 02 Sep 01, 2023

Report No.: KSCR231000185801

Page: 46 of 70

MIMO

Mode	Frequency (MHz)	Average Power (dBm)	Tune up
1.4M	5728.50	26.92	28.00
	5786.50	26.54	28.00
	5848.12	26.21	28.00
3M	5727.50	25.24	26.00
	5784.50	25.58	26.00
	5847.20	25.59	26.00
10M	5730.50	16.81	18.00
	5787.50	16.89	18.00
	5844.50	17.12	18.00
20M	5735.50	16.41	18.00
	5787.50	16.53	18.00
	5839.50	16.75	18.00
40M	5745.50	16.67	18.00
	5787.50	16.44	18.00
	5829.50	16.78	18.00

8.1.5 Conducted Power Of BT

BT			Average Conducted Power (dBm)	Tune up (dBm)
Modulation	Channel	Frequency (MHz)		
GFSK	0	2402	2.92	4.00
	39	2441	4.92	5.00
	78	2480	4.77	5.00
$\pi/4$ DQPSK	0	2402	0.12	2.00
	39	2441	1.73	2.00
	78	2480	2.47	3.00
8DPSK	0	2402	0.36	2.00
	39	2441	1.92	2.00
	78	2480	2.84	3.00
BLE			Average Conducted Power (dBm)	Tune up (dBm)
Modulation	Channel	Frequency (MHz)		
GFSK_1Mbps	0	2402	1.02	3.00
	19	2440	2.60	3.00
	39	2480	3.84	4.00
GFSK_2Mbps	0	2402	1.12	3.00
	19	2440	2.59	3.00
	39	2480	3.53	4.00

8.2 Measurement of SAR Data

Note:

- 1) The maximum Scaled SAR value is marked in bold. Graph Results refer to Appendix B
- 2) Per FCC KDB Publication 447498 D04, if the reported (scaled) SAR measured at the middle channel or highest output power channel for each test configuration is ≤ 0.8 W/kg (2.0W/kg for 10g) then testing at the other channels is not required for such test configuration(s).
- 3) “**” is repeated measurement.

WiFi 2.4G:

- 1) When the highest reported SAR for the initial test configuration is adjusted by the ratio of the subsequent test configuration to initial test configuration specified maximum output power and the adjusted SAR is ≤ 3.0 W/kg, SAR test for the other 802.11 modes are not required.

WiFi 5G:

- 1) When the same maximum output power is specified for both bands, begin SAR measurement in U-NII-2A band by applying the OFDM SAR requirements. As the highest reported SAR for a test configuration is ≤ 3.0 W/kg, SAR is not required for U-NII-1 band for that configuration.
- 2) When the highest reported SAR for the initial test configuration is adjusted by the ratio of the subsequent test configuration to initial test configuration specified maximum output power and the adjusted SAR is ≤ 3.0 W/kg, SAR test for the other 802.11 modes are not required.

8.2.1 SAR Result Of 2.4GHz Wi-Fi

Test position	Test mode	Test Ch./Freq.	Duty Cycle	Duty Cycle Scaled factor	SAR (W/kg) 1-g	SAR (W/kg) 10-g	Power drift (dB)	Conducted power (dBm)	Tune up Limit (dBm)	Scaled factor	Scaled SAR (W/kg) 10-g	Liquid Temp.	SAR limit (W/kg) 10-g
Extremity Test data(0mm) Antenna 0													
Front side	802.11b	6/2437	98.08%	1.02	0.047	0.026	0.05	21.24	22.00	1.191	0.031	22.0	4.0
Back side	802.11b	6/2437	98.08%	1.02	0.643	0.301	0.09	21.24	22.00	1.191	0.366	22.0	4.0
Left side	802.11b	6/2437	98.08%	1.02	0.017	0.010	0.13	21.24	22.00	1.191	0.012	22.0	4.0
Right side	802.11b	6/2437	98.08%	1.02	0.037	0.019	0.02	21.24	22.00	1.191	0.023	22.0	4.0
Top side	802.11b	6/2437	98.08%	1.02	0.006	0.001	0.17	21.24	22.00	1.191	0.002	22.0	4.0
Bottom side	802.11b	6/2437	98.08%	1.02	0.581	0.269	0.02	21.24	22.00	1.191	0.327	22.0	4.0
Extremity Test data(0mm) Antenna 1													
Front side	802.11b	6/2437	98.08%	1.02	0.172	0.093	-0.05	21.12	22.00	1.225	0.116	22.0	4.0
Back side	802.11b	6/2437	98.08%	1.02	1.41	0.639	0.14	21.12	22.00	1.225	0.798	22.0	4.0
Left side	802.11b	6/2437	98.08%	1.02	0.037	0.021	-0.02	21.12	22.00	1.225	0.026	22.0	4.0
Right side	802.11b	6/2437	98.08%	1.02	0.010	0.005	0.07	21.12	22.00	1.225	0.006	22.0	4.0
Top side	802.11b	6/2437	98.08%	1.02	0.029	0.011	0.17	21.12	22.00	1.225	0.014	22.0	4.0
Bottom side	802.11b	6/2437	98.08%	1.02	0.165	0.083	-0.16	21.12	22.00	1.225	0.103	22.0	4.0

Test position	Test mode	Test Ch./Freq.	Duty Cycle	Duty Cycle Scaled factor	SAR (W/kg) 1-g	SAR (W/kg) 10-g	Power drift (dB)	Conducted power (dBm)	Tune up Limit (dBm)	Scaled factor	Scaled SAR (W/kg) 1-g	Liquid Temp.	SAR limit (W/kg) 1-g
Body Test data(0mm) Antenna 0													
Bottom side	802.11b	6/2437	98.08%	1.02	0.581	0.269	0.02	21.24	22.00	1.191	0.706	22.0	1.6
Body Test data(0mm) Antenna 1													
Bottom side	802.11b	6/2437	98.08%	1.02	0.165	0.083	-0.16	21.12	22.00	1.225	0.206	22.0	1.6

8.2.2 SAR Result Of 5GHz Wi-Fi

Test position	Test mode	Test Ch./Freq.	Duty Cycle %	Duty Cycle Scaled factor	SAR (W/kg) 1-g	SAR (W/kg) 1-g	Power drift (dB)	Conducted power (dBm)	Tune up Limit (dBm)	Scaled factor	Scaled SAR (W/kg) 10-g	Liquid Temp.	SAR limit (W/kg) 10-g
Extremity Test data U-NII-1 (0mm) Antenna 0													
Front side	802.11a	40/5200	99.15	1.009	0.023	0.011	0.07	19.11	19.50	1.094	0.013	22.2	4.0
Back side	802.11a	40/5200	99.15	1.009	0.299	0.117	0.12	19.11	19.50	1.094	0.129	22.2	4.0
Left side	802.11a	40/5200	99.15	1.009	0.011	0.005	0.06	19.11	19.50	1.094	0.005	22.2	4.0
Right side	802.11a	40/5200	99.15	1.009	0.02	0.008	0.12	19.11	19.50	1.094	0.009	22.2	4.0
Top side	802.11a	40/5200	99.15	1.009	0.006	0.003	0.1	19.11	19.50	1.094	0.003	22.2	4.0
Bottom side	802.11a	40/5200	99.15	1.009	0.271	0.106	0.04	19.11	19.50	1.094	0.117	22.2	4.0
Extremity Test data U-NII-3 (0mm) Antenna 0													
Front side	802.11a	157/5785	99.2	1.008	0.143	0.072	-0.12	19.13	19.50	1.089	0.079	22.2	4.0
Back side	802.11a	157/5785	99.2	1.008	1.86	0.690	0.13	19.13	19.50	1.089	0.757	22.2	4.0
Left side	802.11a	157/5785	99.2	1.008	0.061	0.025	-0.19	19.13	19.50	1.089	0.028	22.2	4.0
Right side	802.11a	157/5785	99.2	1.008	0.119	0.051	0.1	19.13	19.50	1.089	0.056	22.2	4.0
Top side	802.11a	157/5785	99.2	1.008	0.026	0.018	-0.08	19.13	19.50	1.089	0.020	22.2	4.0
Bottom side	802.11a	157/5785	99.2	1.008	1.32	0.534	-0.03	19.13	19.50	1.089	0.586	22.2	4.0
Extremity Test data U-NII-1 (0mm) Antenna 1													
Front side	802.11a	40/5200	99.15	1.009	0.127	0.050	0.16	19.30	19.50	1.047	0.053	22.2	4.0
Back side	802.11a	40/5200	99.15	1.009	1.03	0.339	0.09	19.30	19.50	1.047	0.358	22.2	4.0
Left side	802.11a	40/5200	99.15	1.009	0.031	0.011	0.17	19.30	19.50	1.047	0.012	22.2	4.0
Right side	802.11a	40/5200	99.15	1.009	0.01	0.003	0.07	19.30	19.50	1.047	0.003	22.2	4.0
Top side	802.11a	40/5200	99.15	1.009	0.023	0.009	-0.08	19.30	19.50	1.047	0.010	22.2	4.0
Bottom side	802.11a	40/5200	99.15	1.009	0.123	0.044	-0.04	19.30	19.50	1.047	0.047	22.2	4.0
Extremity Test data U-NII-3 (0mm) Antenna 1													
Front side	802.11a	157/5785	99.2	1.008	0.824	0.361	-0.03	19.21	19.50	1.069	0.389	22.2	4.0
Back side	802.11a	157/5785	99.2	1.008	6.68	2.35	0.06	19.21	19.50	1.069	2.532	22.2	4.0
Left side	802.11a	157/5785	99.2	1.008	0.179	0.097	0.05	19.21	19.50	1.069	0.105	22.2	4.0
Right side	802.11a	157/5785	99.2	1.008	0.078	0.039	0.01	19.21	19.50	1.069	0.042	22.2	4.0
Top side	802.11a	157/5785	99.2	1.008	0.163	0.050	-0.01	19.21	19.50	1.069	0.054	22.2	4.0
Bottom side	802.11a	157/5785	99.2	1.008	0.803	0.324	-0.11	19.21	19.50	1.069	0.349	22.2	4.0

Test position	Test mode	Test Ch./Freq.	Duty Cycle %	Duty Cycle Scaled factor	SAR (W/kg) 1-g	SAR (W/kg) 1-g	Power drift (dB)	Conducted power (dBm)	Tune up Limit (dBm)	Scaled factor	Scaled SAR (W/kg) 1-g	Liquid Temp.	SAR limit (W/kg) 1-g
Extremity Test data U-NII-1 (0mm) Antenna 0													
Bottom side	802.11a	40/5200	99.15	1.009	0.271	0.106	0.04	19.11	19.50	1.094	0.299	22.2	1.6
Extremity Test data U-NII-3 (0mm) Antenna 0													



Compliance Certification Services (Kunshan) Inc.

CCSEM-TRF-001 Rev. 02 Sep 01, 2023

Report No.: KSCR231000185801

Page: 51 of 70

Bottom side	802.11a	157/5785	99.2	1.008	1.32	0.534	-0.03	19.13	19.50	1.089	1.449	22.2	1.6
Extremity Test data U-NII-1 (0mm) Antenna 1													
Bottom side	802.11a	40/5200	99.15	1.009	0.123	0.044	-0.04	19.30	19.50	1.047	0.129	22.2	1.6
Extremity Test data U-NII-3 (0mm) Antenna 1													
Bottom side	802.11a	157/5785	99.2	1.008	0.803	0.324	-0.11	19.21	19.50	1.069	0.865	22.2	1.6



Compliance Certification Services (Kunshan) Inc.

CCSEM-TRF-001 Rev. 02 Sep 01, 2023

Report No.: KSCR231000185801

Page: 52 of 70

8.2.3 SAR Result Of Bluetooth

Test position	Test mode	Test Ch./Freq.	Duty Cycle	Duty Cycle Scaled factor	SAR (W/kg) 1-g	SAR (W/kg) 10-g	Power drift (dB)	Conducted power (dBm)	Tune up Limit (dBm)	Scaled factor	Scaled SAR (W/kg) 10-g	Liquid Temp.	SAR limit (W/kg) 10-g
Extremity Test data(0mm)													
Front side	GFSK	39/2441	77.17%	1.296	0.001	0.000	0.07	4.92	5.00	1.019	0.000	22.0	4.0
Back side	GFSK	39/2441	77.17%	1.296	0.015	0.004	0.06	4.92	5.00	1.019	0.005	22.0	4.0
Left side	GFSK	39/2441	77.17%	1.296	0.001	0.000	-0.04	4.92	5.00	1.019	0.000	22.0	4.0
Right side	GFSK	39/2441	77.17%	1.296	0.001	0.000	-0.07	4.92	5.00	1.019	0.000	22.0	4.0
Top side	GFSK	39/2441	77.17%	1.296	0.000	0.000	-0.18	4.92	5.00	1.019	0.000	22.0	4.0
Bottom side	GFSK	39/2441	77.17%	1.296	0.014	0.004	0.10	4.92	5.00	1.019	0.005	22.0	4.0
Body Test data(0mm)													
Bottom side	GFSK	39/2441	77.17%	1.296	0.014	0.004	0.10	4.92	5.00	1.019	0.018	22.0	1.6



Compliance Certification Services (Kunshan) Inc.

CCSEM-TRF-001 Rev. 02 Sep 01, 2023

Report No.: KSCR231000185801

Page: 53 of 70

8.2.1 SAR Result Of SDR 2.4GHz

Test position	Test mode	Test ch./Freq.	SAR (W/kg) 1-g	SAR (W/kg) 10-g	Power drift (dB)	Conducted Power (dBm)	Tune up Limit (dBm)	Scaled factor	Scaled SAR (W/kg) 10-g	Scaled SAR Duty cycle 16.44% (W/kg) 10-g	Liquid Temp .(°C)	SAR limit (W/kg) 10-g
Extremity Test data(0mm)Antenna 0 Rotate												
Front side	3MHz	2437.5	1.21	0.677	0.01	25.61	26.00	1.094	0.741	0.122	21.8	4.0
Back side	3MHz	2437.5	0.659	0.384	0.04	25.61	26.00	1.094	0.420	0.069	21.8	4.0
Left side	3MHz	2437.5	0.409	0.245	0.17	25.61	26.00	1.094	0.268	0.044	21.8	4.0
Right side	3MHz	2437.5	0.047	0.033	0.04	25.61	26.00	1.094	0.036	0.006	21.8	4.0
Bottom side	3MHz	2437.5	0.069	0.040	0.09	25.61	26.00	1.094	0.043	0.007	21.8	4.0
Extremity Test data(0mm)Antenna 0 Fold												
Back side	3MHz	2437.5	0.041	0.028	0.02	25.61	26.00	1.094	0.031	0.005	21.8	4.0
Left side	3MHz	2437.5	0.285	0.171	0.07	25.61	26.00	1.094	0.187	0.031	21.8	4.0
Right side	3MHz	2437.5	0.045	0.028	0.06	25.61	26.00	1.094	0.031	0.005	21.8	4.0
Bottom side	3MHz	2437.5	0.061	0.038	0.01	25.61	26.00	1.094	0.042	0.007	21.8	4.0
Extremity Test data(0mm)Antenna 0 Vertical												
Front side	3MHz	2437.5	0.766	0.372	0.09	25.61	26.00	1.094	0.407	0.067	21.8	4.0
Back side	3MHz	2437.5	0.469	0.272	-0.01	25.61	26.00	1.094	0.298	0.049	21.8	4.0
Left side	3MHz	2437.5	0.268	0.163	0.19	25.61	26.00	1.094	0.178	0.029	21.8	4.0
Right side	3MHz	2437.5	0.039	0.027	0.11	25.61	26.00	1.094	0.029	0.005	21.8	4.0
Bottom side	3MHz	2437.5	0.065	0.039	0.01	25.61	26.00	1.094	0.043	0.007	21.8	4.0
Extremity Test data(0mm)Antenna 1 Rotate												
Front side	3MHz	2437.5	0.633	0.347	-0.17	26.66	27.00	1.081	0.375	0.062	21.8	4.0
Back side	3MHz	2437.5	3.55	1.74	0.11	26.66	27.00	1.081	1.882	0.309	21.8	4.0
Left side	3MHz	2437.5	0.024	0.018	0.02	26.66	27.00	1.081	0.020	0.003	21.8	4.0
Right side	3MHz	2437.5	0.233	0.132	0.07	26.66	27.00	1.081	0.143	0.024	21.8	4.0
Bottom side	3MHz	2437.5	0.141	0.079	0.05	26.66	27.00	1.081	0.085	0.014	21.8	4.0
Extremity Test data(0mm)Antenna 1 Fold												
Back side	3MHz	2437.5	3.42	1.64	0.04	26.66	27.00	1.081	1.774	0.292	21.8	4.0
Left side	3MHz	2437.5	0.020	0.016	0.08	26.66	27.00	1.081	0.018	0.003	21.8	4.0
Right side	3MHz	2437.5	0.241	0.146	0.08	26.66	27.00	1.081	0.158	0.026	21.8	4.0
Bottom side	3MHz	2437.5	0.136	0.071	-0.11	26.66	27.00	1.081	0.077	0.013	21.8	4.0
Extremity Test data(0mm)Antenna 1 Vertical												
Front side	3MHz	2437.5	0.681	0.379	-0.04	26.66	27.00	1.081	0.410	0.067	21.8	4.0
Back side	3MHz	2437.5	3.49	1.60	0.07	26.66	27.00	1.081	1.730	0.284	21.8	4.0
Left side	3MHz	2437.5	0.029	0.019	0.04	26.66	27.00	1.081	0.020	0.003	21.8	4.0
Right side	3MHz	2437.5	0.259	0.144	-0.06	26.66	27.00	1.081	0.156	0.026	21.8	4.0
Bottom side	3MHz	2437.5	0.129	0.072	0.05	26.66	27.00	1.081	0.078	0.013	21.8	4.0



Compliance Certification Services (Kunshan) Inc.

CCSEM-TRF-001 Rev. 02 Sep 01, 2023

Report No.: KSCR231000185801

Page: 54 of 70

Test position	Test mode	Test ch./Freq.	SAR (W/kg) 1-g	SAR (W/kg) 10-g	Power drift (dB)	Conducted Power (dBm)	Tune up Limit (dBm)	Scaled factor	Scaled SAR (W/kg) 1-g	Scaled SAR Duty cycle 16.44% (W/kg) 1-g	Liquid Temp .(°C)	SAR limit (W/kg) 1-g
Body Test data(0mm) Antenna 0 Rotate												
Bottom side	3MHz	2437.5	0.069	0.040	0.09	25.61	26.00	1.094	0.075	0.012	21.8	1.6
Body Test data(0mm) Antenna 0 Fold												
Bottom side	3MHz	2437.5	0.061	0.038	0.01	25.61	26.00	1.094	0.067	0.011	21.8	1.6
Body Test data(0mm) Antenna 0 Vertical												
Bottom side	3MHz	2437.5	0.065	0.039	0.01	25.61	26.00	1.094	0.071	0.012	21.8	1.6
Body Test data(0mm) Antenna 1 Rotate												
Bottom side	3MHz	2437.5	0.141	0.079	0.05	26.66	27.00	1.081	0.152	0.025	21.8	1.6
Body Test data(0mm) Antenna 1 Fold												
Bottom side	3MHz	2437.5	0.136	0.071	-0.11	26.66	27.00	1.081	0.147	0.024	21.8	1.6
Body Test data(0mm) Antenna 1 Vertical												
Bottom side	3MHz	2437.5	0.129	0.072	0.05	26.66	27.00	1.081	0.140	0.023	21.8	1.6

Note: The customer claims that the maximum duty cycle for normal use in the SDR 2.4G frequency band is 16.44%

8.2.2 SAR Result Of SDR 5GHz

Test position	Test mode	Test ch./Freq.	SAR (W/kg) 1-g	SAR (W/kg) 10-g	Power drift (dB)	Conducted Power (dBm)	Tune up Limit (dBm)	Scaled factor	Scaled SAR (W/kg) 10-g	Scaled SAR Duty cycle 16.44% (W/kg) 10-g	Liquid Temp .(°C)	SAR limit (W/kg) 10-g
Extremity Test data(0mm) Antenna 0 Rotate												
Front side	1.4MHz	5786.5	1.84	0.842	0.14	27.18	28.00	1.208	1.017	0.167	21.8	4.0
Back side	1.4MHz	5786.5	1.51	0.635	0.14	27.18	28.00	1.208	0.767	0.126	21.8	4.0
Left side	1.4MHz	5786.5	0.543	0.300	-0.07	27.18	28.00	1.208	0.362	0.060	21.8	4.0
Right side	1.4MHz	5786.5	0.103	0.065	-0.08	27.18	28.00	1.208	0.078	0.013	21.8	4.0
Bottom side	1.4MHz	5786.5	0.105	0.073	0.13	27.18	28.00	1.208	0.089	0.015	21.8	4.0
Extremity Test data(0mm) Antenna 0 Fold												
Back side	1.4MHz	5786.5	0.216	0.099	0.03	27.18	28.00	1.208	0.120	0.020	21.8	4.0
Left side	1.4MHz	5786.5	0.607	0.294	-0.15	27.18	28.00	1.208	0.355	0.058	21.8	4.0
Right side	1.4MHz	5786.5	0.171	0.103	0.14	27.18	28.00	1.208	0.124	0.020	21.8	4.0
Bottom side	1.4MHz	5786.5	0.101	0.071	0.09	27.18	28.00	1.208	0.086	0.014	21.8	4.0
Extremity Test data(0mm) Antenna 0 Vertical												
Front side	1.4MHz	5786.5	2.31	1.06	0.01	27.18	28.00	1.208	1.280	0.210	21.8	4.0
Back side	1.4MHz	5786.5	1.35	0.552	-0.16	27.18	28.00	1.208	0.667	0.110	21.8	4.0
Left side	1.4MHz	5786.5	0.631	0.322	-0.03	27.18	28.00	1.208	0.389	0.064	21.8	4.0
Right side	1.4MHz	5786.5	0.148	0.091	-0.19	27.18	28.00	1.208	0.110	0.018	21.8	4.0
Bottom side	1.4MHz	5786.5	0.100	0.070	0.04	27.18	28.00	1.208	0.085	0.014	21.8	4.0
Extremity Test data(0mm) Antenna 1 Rotate												
Front side	1.4MHz	5786.5	1.15	0.529	-0.17	26.88	27.00	1.028	0.544	0.089	21.8	4.0
Back side	1.4MHz	5786.5	3.65	1.31	0.10	26.88	27.00	1.028	1.347	0.221	21.8	4.0
Left side	1.4MHz	5786.5	0.111	0.072	0.13	26.88	27.00	1.028	0.074	0.012	21.8	4.0
Right side	1.4MHz	5786.5	0.399	0.204	-0.03	26.88	27.00	1.028	0.210	0.035	21.8	4.0
Bottom side	1.4MHz	5786.5	0.034	0.016	0.04	26.88	27.00	1.028	0.017	0.003	21.8	4.0
Extremity Test data(0mm) Antenna 1 Fold												
Back side	1.4MHz	5786.5	3.51	1.25	0.11	26.88	27.00	1.028	1.285	0.211	21.8	4.0
Left side	1.4MHz	5786.5	0.140	0.084	0.05	26.88	27.00	1.028	0.086	0.014	21.8	4.0
Right side	1.4MHz	5786.5	0.361	0.188	0.03	26.88	27.00	1.028	0.193	0.032	21.8	4.0
Bottom side	1.4MHz	5786.5	0.041	0.019	0.08	26.88	27.00	1.028	0.020	0.003	21.8	4.0
Extremity Test data(0mm) Antenna 1 Vertical												
Front side	1.4MHz	5786.5	1.14	0.542	-0.13	26.88	27.00	1.028	0.557	0.092	21.8	4.0
Back side	1.4MHz	5786.5	3.40	1.23	-0.08	26.88	27.00	1.028	1.264	0.208	21.8	4.0
Left side	1.4MHz	5786.5	0.099	0.069	0.13	26.88	27.00	1.028	0.071	0.012	21.8	4.0
Right side	1.4MHz	5786.5	0.392	0.202	-0.19	26.88	27.00	1.028	0.208	0.034	21.8	4.0
Bottom side	1.4MHz	5786.5	0.036	0.016	-0.11	26.88	27.00	1.028	0.016	0.003	21.8	4.0



Compliance Certification Services (Kunshan) Inc.

CCSEM-TRF-001 Rev. 02 Sep 01, 2023

Report No.: KSCR231000185801

Page: 56 of 70

Test position	Test mode	Test ch./Freq.	SAR (W/kg) 1-g	SAR (W/kg) 10-g	Power drift (dB)	Conducted Power (dBm)	Tune up Limit (dBm)	Scaled factor	Scaled SAR (W/kg) 1-g	Scaled SAR Duty cycle 16.44% (W/kg) 1-g	Liquid Temp .(°C)	SAR limit (W/kg) 1-g
Body Test data(0mm) Antenna 0 Rotate												
Bottom side	1.4MHz	5786.5	0.105	0.073	0.13	27.18	28.00	1.208	0.127	0.021	21.8	1.6
Body Test data(0mm) Antenna 0 Fold												
Bottom side	1.4MHz	5786.5	0.101	0.071	0.09	27.18	28.00	1.208	0.122	0.020	21.8	1.6
Body Test data(0mm) Antenna 0 Vertical												
Bottom side	1.4MHz	5786.5	0.100	0.070	0.04	27.18	28.00	1.208	0.121	0.020	21.8	1.6
Body Test data(0mm) Antenna 1 Rotate												
Bottom side	1.4MHz	5786.5	0.034	0.016	0.04	26.88	27.00	1.028	0.035	0.006	21.8	1.6
Body Test data(0mm) Antenna 1 Fold												
Bottom side	1.4MHz	5786.5	0.041	0.019	0.08	26.88	27.00	1.028	0.042	0.007	21.8	1.6
Body Test data(0mm) Antenna 1 Vertical												
Bottom side	1.4MHz	5786.5	0.036	0.016	-0.11	26.88	27.00	1.028	0.037	0.006	21.8	1.6

Note: The customer claims that the maximum duty cycle for normal use in the SDR 5G frequency band is 16.44%



Compliance Certification Services (Kunshan) Inc.

CCSEM-TRF-001 Rev. 02 Sep 01, 2023

Report No.: KSCR231000185801

Page: 57 of 70

8.3 Multiple Transmitter Evaluation

8.3.1 Simultaneous SAR SAR test evaluation

Simultaneous Transmission

NO.	Simultaneous Transmission Configuration	Extremity	Body
1	SDR 2.4G Antenna0+SDR 2.4G Antenna1	Yes	Yes
2	SDR 5G Antenna0+SDR 5G Antenna1	Yes	Yes
3	WIFI 2.4GHz + SDR 5GHz	Yes	Yes
4	WIFI 5GHz + SDR 2.4GHz	Yes	Yes
5	BT+SDR 5G	Yes	Yes
6	WIFI Antenna 1 + BT	Yes	Yes

Simultaneous Transmission SAR Summation Scenario for Extremity

Exposure position	WIFI 2.4G Ant0	WIFI 2.4G Ant1	WIFI 5G Ant0	WIFI 5G Ant1	SDR 2.4G Ant0	SDR 2.4G Ant1	SDR 5G Ant0	SDR 5G Ant1	BT	1	2	3	4	5	6	Volume scan
Front side	0.031	0.116	0.079	0.389	0.122	0.067	0.210	0.092	0.000	0.189	0.302	0.418	0.578	0.302	0.389	No
Back side	0.366	0.798	0.757	2.532	0.069	0.309	0.126	0.221	0.005	0.378	0.348	1.146	2.910	0.353	2.537	No
Left side	0.012	0.026	0.028	0.105	0.044	0.003	0.064	0.014	0.000	0.047	0.078	0.104	0.152	0.078	0.105	No
Right side	0.023	0.006	0.056	0.042	0.006	0.026	0.020	0.035	0.000	0.032	0.055	0.078	0.088	0.055	0.042	No
Top side	0.002	0.014	0.020	0.054	0.000	0.000	0.000	0.000	0.000	0.000	0.000	0.014	0.054	0.000	0.054	No
Bottom side	0.327	0.103	0.586	0.349	0.007	0.014	0.015	0.003	0.005	0.021	0.018	0.345	0.607	0.023	0.354	No

Simultaneous Transmission SAR Summation Scenario for Body

Exposure position	WIFI 2.4G Ant0	WIFI 2.4G Ant1	WIFI 5G Ant0	WIFI 5G Ant1	SDR 2.4G Ant0	SDR 2.4G Ant1	SDR 5G Ant0	SDR 5G Ant1	BT	1	2	3	4	5	6	Volume scan
Bottom side	0.706	0.206	1.449	0.865	0.012	0.025	0.021	0.007	0.018	0.037	0.028	0.734	1.486	0.046	0.883	No

Compliance Certification Services (Kunshan) Inc.

CCSEM-TRF-001 Rev. 02 Sep 01, 2023

Report No.: KSCR231000185801

Page: 58 of 70

9 Equipment list

Test Platform		SPEAG DASY5 Professional				
Location		Compliance Certification Services (Kunshan) Inc.				
Software Reference		DASY52 52.8.8(1222); SEMCAD X 14.6.10(7331)				
Hardware Reference						
Equipment		Manufacturer	Model	Serial Number	Calibration Date	Due date of calibration
<input checked="" type="checkbox"/>	P C	HP	Core(rm)3.16G	CZCO48171H	N/A	N/A
<input checked="" type="checkbox"/>	Signal Generator	R&S	SMBV100B	103571	2023/03/16	2024/03/15
<input checked="" type="checkbox"/>	S-Parameter Network Analyzer	Agilent	E5071C	MY46417539	2023/03/31	2024/03/30
<input checked="" type="checkbox"/>	DAK-3.5 probe	SPEAG	DAK-3.5	1102	N/A	N/A
<input checked="" type="checkbox"/>	Communication System	Anritsu	MT8820C	6201465349	2023/03/16	2024/03/15
<input checked="" type="checkbox"/>	Power meter	Anritsu	ML2495A	1445010	2023/03/16	2024/03/15
<input checked="" type="checkbox"/>	Power sensor	Anritsu	MA2411B	1339220	2023/03/16	2024/03/15
<input checked="" type="checkbox"/>	DAE	SPEAG	DAE4	1245	2023/04/25	2024/04/24
<input checked="" type="checkbox"/>	E-field PROBE	SPEAG	EX3DV4	3801	2023/06/23	2024/06/22
<input checked="" type="checkbox"/>	Dipole	SPEAG	D2450V2	817	2022/04/01	2025/03/31
<input checked="" type="checkbox"/>	Dipole	SPEAG	D5GHzV2	1095	2022/06/01	2025/05/31
<input checked="" type="checkbox"/>	Electro Thermometer	Renke	RS-WS-N01-6J	1032862	2023/03/22	2024/03/21
<input checked="" type="checkbox"/>	Amplifier	Mini-circuits	ZVE-8G	110405	N/A	N/A
<input checked="" type="checkbox"/>	Amplifier	Mini-circuits	ZHL-42	QA1331003	N/A	N/A
<input checked="" type="checkbox"/>	3db ATTENUATOR	MINI	MCL BW-S3W5	0533	N/A	N/A
<input checked="" type="checkbox"/>	DUMMY PROBE	SPEAG	DP_2	SPDP2001AA	N/A	N/A
<input checked="" type="checkbox"/>	Dual Directional Coupler	Woken	20W couple	DOM2BHW1A1	N/A	N/A
<input checked="" type="checkbox"/>	SAM PHANTOM (ELI4 v4.0)	SPEAG	QDOVA001BB	1102	N/A	N/A
<input checked="" type="checkbox"/>	Twin SAM Phantom	SPEAG	QD000P40CD	1609	N/A	N/A
<input checked="" type="checkbox"/>	ROBOT	SPEAG	TX60	F10/5E6AA1/A101	N/A	N/A
<input checked="" type="checkbox"/>	ROBOT KRC	SPEAG	CS8C	F10/5E6AA1/C101	N/A	N/A
<input checked="" type="checkbox"/>	LIQUID CALIBRATION KIT	ANTENNESSA	41/05 OCP9	00425167	N/A	N/A

Note: All the equipments are within the valid period when the tests are performed.



Compliance Certification Services (Kunshan) Inc.

CCSEM-TRF-001 Rev. 02 Sep 01, 2023

Report No.: KSCR231000185801

Page: 59 of 70

10 Calibration certificate

Please see the Appendix C

11 Photographs

Please see the Appendix D



Compliance Certification Services (Kunshan) Inc.

CCSEM-TRF-001 Rev. 02 Sep 01, 2023

Report No.: KSCR231000185801

Page: 60 of 70

Appendix A: Detailed System Check Results

The plots are showing as followings.

Compliance Certification Services (Kunshan) Inc.

CCSEM-TRF-001 Rev. 02 Sep 01, 2023

Report No.: KSCR231000185801

Page: 61 of 70

Date: 2023/11/14

Test Laboratory: Compliance Certification Services (Kunshan) Inc.

System Performance Check-D2450

DUT: Dipole 2450 MHz; Type: 817

Communication System: UID 0, CW; Frequency: 2450 MHz; Duty Cycle: 1:1

Medium parameters used: $f = 2450$ MHz; $\sigma = 1.792$ S/m; $\epsilon_r = 40.356$; $\rho = 1000$ kg/m³

Phantom section: Flat Section

Measurement Standard: DASYS5 (IEEE/IEC/ANSI C63.19-2007)

DASY5 Configuration:

- Probe: EX3DV4 - SN3801; ConvF(7.38, 7.38, 7.38); Calibrated: 2023/06/23;
- Sensor-Surface: 1.4mm (Mechanical Surface Detection)
- Electronics: DAE4 Sn1245; Calibrated: 2023/04/25
- Phantom: Twin SAM Phantom; Type: QD 000 P40 CD; Serial: 1609
- Measurement SW: DASYS52, Version 52.8 (8); SEMCAD X Version 14.6.10 (7331)

System Performance Check at Frequencies above 1 GHz/d=10mm, Pin=250 mW, dist=1.4mm (EX-Probe)/Area Scan (8x9x1): Measurement grid: dx=12mm, dy=12mm
Maximum value of SAR (measured) = 20.8 W/kg

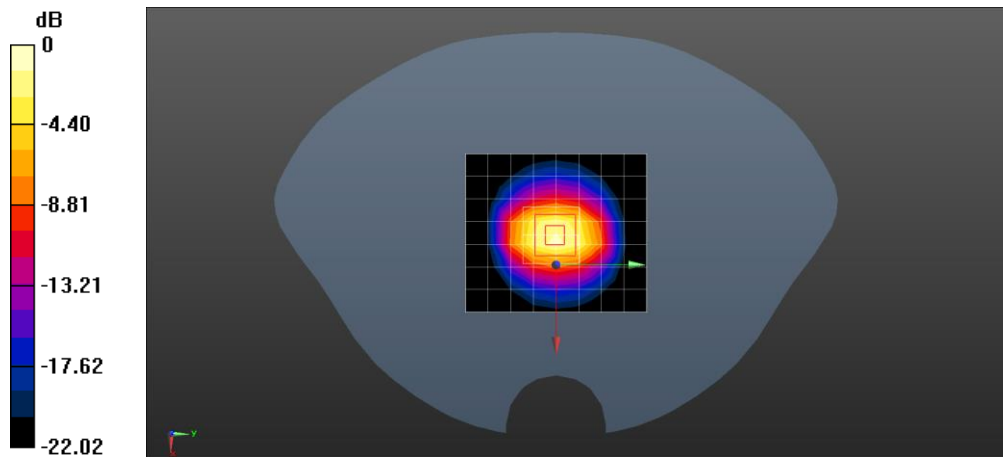
System Performance Check at Frequencies above 1 GHz/d=10mm, Pin=250 mW, dist=1.4mm (EX-Probe)/Zoom Scan (7x7x7) (7x7x7)/Cube 0: Measurement grid: dx=5mm, dy=5mm, dz=5mm

Reference Value = 104.2 V/m; Power Drift = -0.02 dB

Peak SAR (extrapolated) = 27.5 W/kg

SAR(1 g) = 13.5 W/kg; SAR(10 g) = 6.41 W/kg

Maximum value of SAR (measured) = 20.4 W/kg



0 dB = 20.4 W/kg = 13.09 dBW/kg

Compliance Certification Services (Kunshan) Inc.

CCSEM-TRF-001 Rev. 02 Sep 01, 2023

Report No.: KSCR231000185801

Page: 62 of 70

Date: 2023/11/16

Test Laboratory: Compliance Certification Services (Kunshan) Inc.

System Performance Check-D5200

DUT: Dipole D5GHzV2; Type: 1095

Communication System: UID 0, CW (0); Frequency: 5200 MHz; Duty Cycle: 1:1

Medium parameters used: $f = 5200$ MHz; $\sigma = 4.525$ S/m; $\epsilon_r = 36.068$; $\rho = 1000$ kg/m³

Phantom section: Flat Section

Measurement Standard: DASYS (IEEE/IEC/ANSI C63.19-2007)

DASY5 Configuration:

- Probe: EX3DV4 - SN3801; ConvF(5.19, 5.19, 5.19); Calibrated: 2023/06/23;
- Sensor-Surface: 1.4mm (Mechanical Surface Detection)
- Electronics: DAE4 Sn1245; Calibrated: 2023/04/25
- Phantom: Twin SAM Phantom; Type: QD 000 P40 CD; Serial: 1609
- Measurement SW: DASYS2, Version 52.8 (8); SEMCAD X Version 14.6.10 (7331)

System Performance Check with D5GHzV2 Dipole (graded grid)/d=10mm, Pin=100mW, f=5200 MHz/Area

Scan (10x10x1): Measurement grid: dx=10mm, dy=10mm

Maximum value of SAR (measured) = 12.7 W/kg

System Performance Check with D5GHzV2 Dipole (graded grid)/d=10mm, Pin=100mW, f=5200 MHz/Zoom

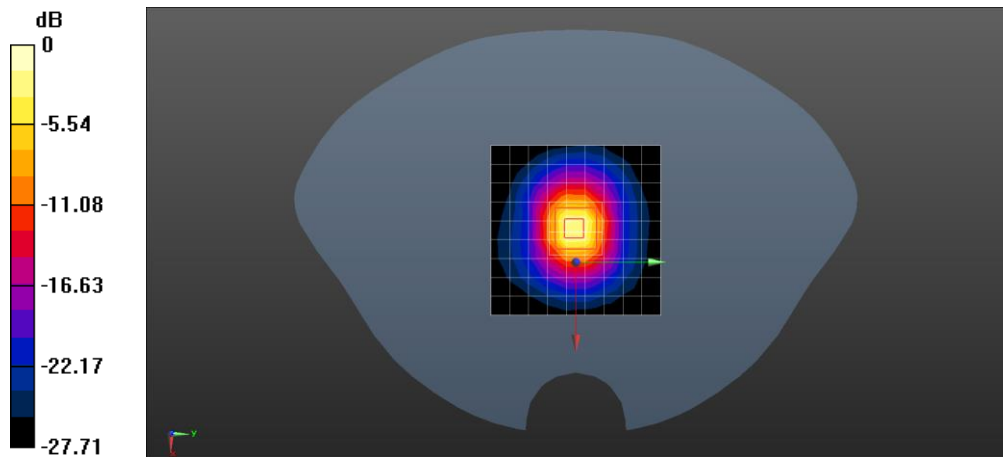
Scan (4x4x1.4mm, graded), dist=1.4mm (8x8x7)/Cube 0: Measurement grid: dx=4mm, dy=4mm, dz=1.4mm

Reference Value = 61.80 V/m; Power Drift = 0.02 dB

Peak SAR (extrapolated) = 32.3 W/kg

SAR(1 g) = 8.22 W/kg; SAR(10 g) = 2.25 W/kg

Maximum value of SAR (measured) = 19.2 W/kg



0 dB = 19.2 W/kg = 12.83 dBW/kg

Compliance Certification Services (Kunshan) Inc.

CCSEM-TRF-001 Rev. 02 Sep 01, 2023

Report No.: KSCR231000185801

Page: 63 of 70

Date: 2023/11/18

Test Laboratory: Compliance Certification Services (Kunshan) Inc.

System Performance Check-D5800

DUT: Dipole D5GHzV2; Type: 1095

Communication System: UID 0, CW (0); Frequency: 5800 MHz; Duty Cycle: 1:1

Medium parameters used: $f = 5800$ MHz; $\sigma = 5.295$ S/m; $\epsilon_r = 34.808$; $\rho = 1000$ kg/m³

Phantom section: Flat Section

Measurement Standard: DASYS (IEEE/IEC/ANSI C63.19-2007)

DASY5 Configuration:

- Probe: EX3DV4 - SN3801; ConvF(4.89, 4.89, 4.89); Calibrated: 2023/06/23;
- Sensor-Surface: 1.4mm (Mechanical Surface Detection)
- Electronics: DAE4 Sn1245; Calibrated: 2023/04/25
- Phantom: Twin SAM Phantom; Type: QD 000 P40 CD; Serial: 1609
- Measurement SW: DASYS2, Version 52.8 (8); SEMCAD X Version 14.6.10 (7331)

System Performance Check with D5GHzV2 Dipole (graded grid)/d=10mm, Pin=100mW, f=5800 MHz/Area

Scan (10x10x1): Measurement grid: dx=10mm, dy=10mm

Maximum value of SAR (measured) = 16.9 W/kg

System Performance Check with D5GHzV2 Dipole (graded grid)/d=10mm, Pin=100mW, f=5800 MHz/Zoom Scan (4x4x1.4mm, graded), dist=1.4mm (8x8x7)/Cube 0:

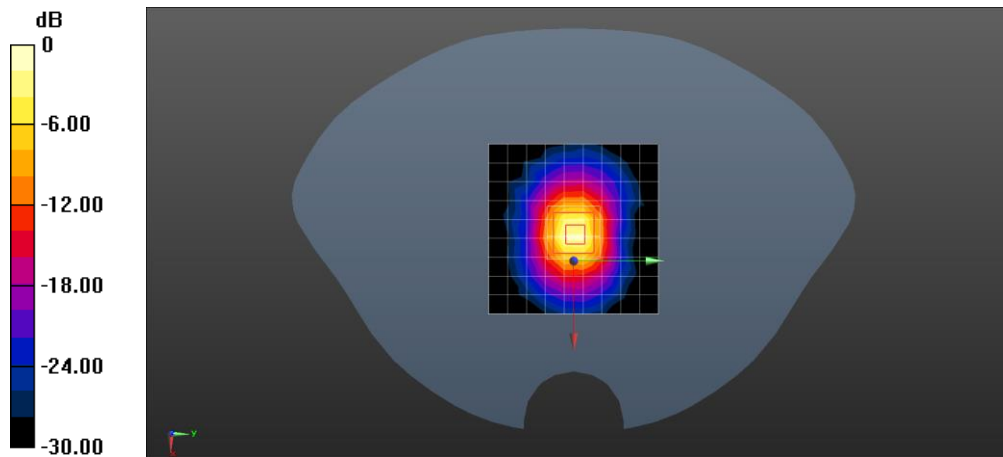
Measurement grid: dx=4mm, dy=4mm, dz=1.4mm

Reference Value = 62.76 V/m; Power Drift = -0.10 dB

Peak SAR (extrapolated) = 32.4 W/kg

SAR(1 g) = 8.12 W/kg; SAR(10 g) = 2.16 W/kg

Maximum value of SAR (measured) = 20.7 W/kg



0 dB = 20.7 W/kg = 13.16 dBW/kg



Compliance Certification Services (Kunshan) Inc.

CCSEM-TRF-001 Rev. 02 Sep 01, 2023

Report No.: KSCR231000185801

Page: 64 of 70

Appendix B: Detailed Test Results

The plots of worse case are showing as followings.

Compliance Certification Services (Kunshan) Inc.

CCSEM-TRF-001 Rev. 02 Sep 01, 2023

Report No.: KSCR231000185801

Page: 65 of 70

Date: 2023/11/14

Test Laboratory: Compliance Certification Services (Kunshan) Inc.

SDR 2.4G Back side Ch2437.5 0mm Antenna 1 Rotate

DUT: Raptor Remote Controller; Type: RRC01

Communication System: UID 0, 2.4GHz (0); Frequency: 2437.5 MHz; Duty Cycle: 1:1

Medium parameters used (interpolated): $f = 2437.5$ MHz; $\sigma = 1.773$ S/m; $\epsilon_r = 40.599$; $\rho = 1000$ kg/m³

Phantom section: Flat Section

Measurement Standard: DASYS5 (IEEE/IEC/ANSI C63.19-2007)

DASY5 Configuration:

- Probe: EX3DV4 - SN3801; ConvF(7.38, 7.38, 7.38); Calibrated: 2023/06/23;
- Sensor-Surface: 1.4mm (Mechanical Surface Detection)
- Electronics: DAE4 Sn1245; Calibrated: 2023/04/25
- Phantom: Twin SAM Phantom; Type: QD 000 P40 CD; Serial: 1609
- Measurement SW: DASYS52, Version 52.8 (8); SEMCAD X Version 14.6.10 (7331)

Configuration/Head/Area Scan (9x10x1): Measurement grid: dx=15mm, dy=15mm

Maximum value of SAR (measured) = 5.38 W/kg

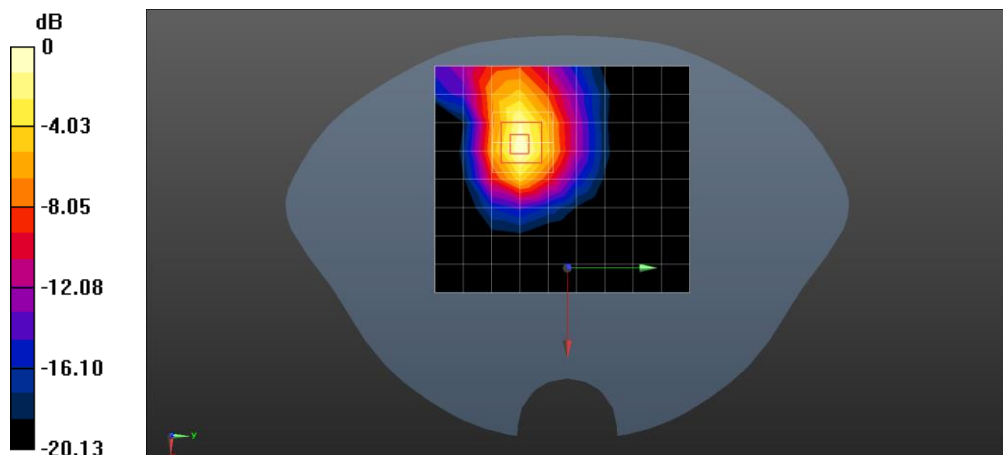
Configuration/Head/Zoom Scan (5x5x7)/Cube 0: Measurement grid: dx=8mm, dy=8mm, dz=5mm

Reference Value = 4.830 V/m; Power Drift = 0.11 dB

Peak SAR (extrapolated) = 6.74 W/kg

SAR(1 g) = 3.55 W/kg; SAR(10 g) = 1.74 W/kg

Maximum value of SAR (measured) = 5.30 W/kg



0 dB = 5.30 W/kg = 7.24 dBW/kg

Compliance Certification Services (Kunshan) Inc.

CCSEM-TRF-001 Rev. 02 Sep 01, 2023

Report No.: KSCR231000185801

Page: 66 of 70

Date: 2023/11/18

Test Laboratory: Compliance Certification Services (Kunshan) Inc.

SDR 5G Back side Ch5785.5 0mm Antenna 1 Rotate

DUT: Raptor Remote Controller; Type: RRC01

Communication System: UID 0, 5GHz (0); Frequency: 5786.5 MHz; Duty Cycle: 1:1

Medium parameters used (interpolated): $f = 5786.5$ MHz; $\sigma = 5.294$ S/m; $\epsilon_r = 34.828$; $\rho = 1000$ kg/m³

Phantom section: Flat Section

Measurement Standard: DASYS5 (IEEE/IEC/ANSI C63.19-2007)

DASY5 Configuration:

- Probe: EX3DV4 - SN3801; ConvF(4.89, 4.89, 4.89); Calibrated: 2023/06/23;
- Sensor-Surface: 1.4mm (Mechanical Surface Detection)
- Electronics: DAE4 Sn1245; Calibrated: 2023/04/25
- Phantom: Twin SAM Phantom; Type: QD 000 P40 CD; Serial: 1609
- Measurement SW: DASYS52, Version 52.8 (8); SEMCAD X Version 14.6.10 (7331)

Configuration/Head/Area Scan (14x13x1): Measurement grid: dx=10mm, dy=10mm

Maximum value of SAR (measured) = 7.93 W/kg

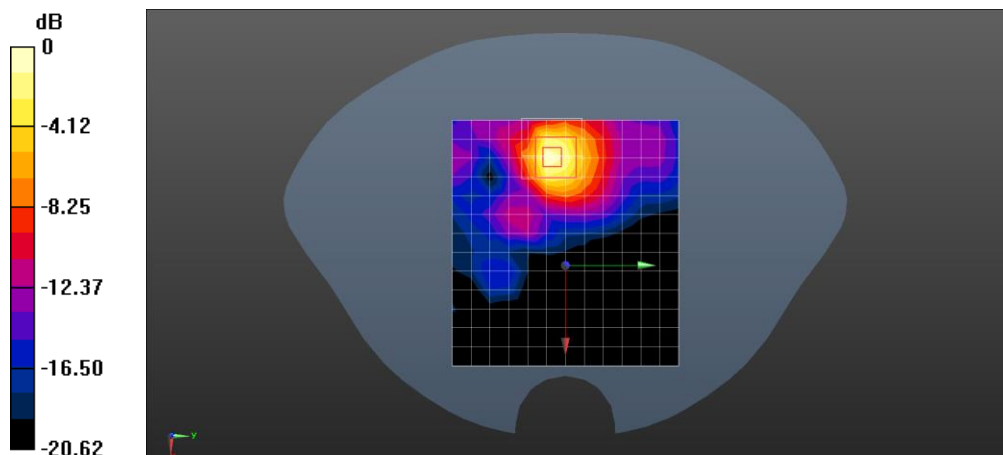
Configuration/Head/Zoom Scan (9x9x7)/Cube 0: Measurement grid: dx=4mm, dy=4mm, dz=1.4mm

Reference Value = 5.941 V/m; Power Drift = 0.10 dB

Peak SAR (extrapolated) = 13.8 W/kg

SAR(1 g) = 3.65 W/kg; SAR(10 g) = 1.31 W/kg

Maximum value of SAR (measured) = 8.53 W/kg



0 dB = 8.53 W/kg = 9.31 dBW/kg

Compliance Certification Services (Kunshan) Inc.

CCSEM-TRF-001 Rev. 02 Sep 01, 2023

Report No.: KSCR231000185801

Page: 67 of 70

Date: 2023/11/14

Test Laboratory: Compliance Certification Services (Kunshan) Inc.

WLAN2.4Ghz 802.11b Back side Ch6 0mm Antenna 1

DUT: Raptor Remote Controller; Type: RRC01

Communication System: UID 0, WiFi (0); Frequency: 2437 MHz; Duty Cycle: 1:1

Medium parameters used: $f = 2437$ MHz; $\sigma = 1.773$ S/m; $\epsilon_r = 40.607$; $\rho = 1000$ kg/m³

Phantom section: Flat Section

Measurement Standard: DASYS5 (IEEE/IEC/ANSI C63.19-2007)

DASY5 Configuration:

- Probe: EX3DV4 - SN3801; ConvF(7.38, 7.38, 7.38); Calibrated: 2023/06/23;
- Sensor-Surface: 1.4mm (Mechanical Surface Detection)
- Electronics: DAE4 Sn1245; Calibrated: 2023/04/25
- Phantom: Twin SAM Phantom; Type: QD 000 P40 CD; Serial: 1609
- Measurement SW: DASYS52, Version 52.8 (8); SEMCAD X Version 14.6.10 (7331)

Configuration/Head/Area Scan (9x14x1): Measurement grid: dx=12mm, dy=12mm

Maximum value of SAR (measured) = 1.59 W/kg

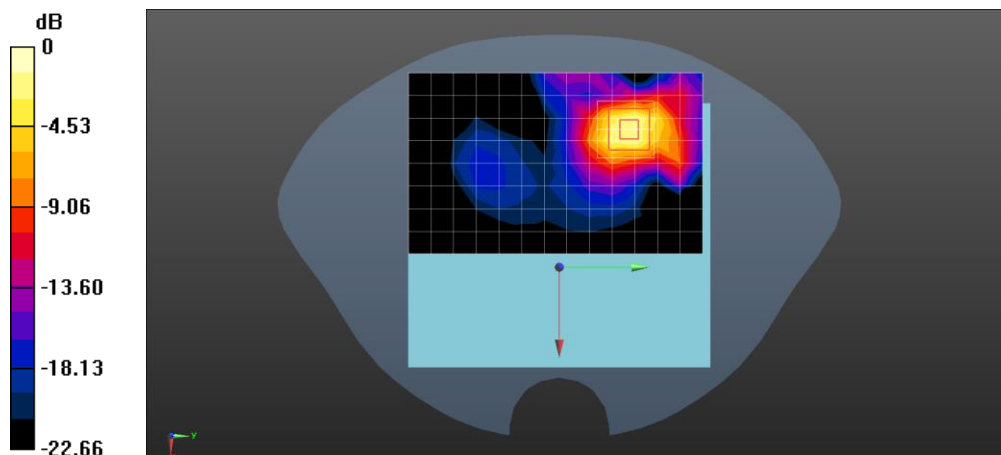
Configuration/Head/Zoom Scan (7x7x7)/Cube 0: Measurement grid: dx=5mm, dy=5mm, dz=5mm

Reference Value = 2.658 V/m; Power Drift = 0.14 dB

Peak SAR (extrapolated) = 2.63 W/kg

SAR(1 g) = 1.41 W/kg; SAR(10 g) = 0.639 W/kg

Maximum value of SAR (measured) = 2.21 W/kg



0 dB = 2.21 W/kg = 3.44 dBW/kg

Compliance Certification Services (Kunshan) Inc.

CCSEM-TRF-001 Rev. 02 Sep 01, 2023

Report No.: KSCR231000185801

Page: 68 of 70

Date: 2023/11/14

Test Laboratory: Compliance Certification Services (Kunshan) Inc.

Bluetooth GFSK Back side Ch2437.5 0mm

DUT: Raptor Remote Controller; Type: RRC01

Communication System: UID 0, Bluetooth (0); Frequency: 2441 MHz; Duty Cycle: 1:1

Medium parameters used: $f = 2441$ MHz; $\sigma = 1.776$ S/m; $\epsilon_r = 40.536$; $\rho = 1000$ kg/m³

Phantom section: Flat Section

Measurement Standard: DASYS5 (IEEE/IEC/ANSI C63.19-2007)

DASY5 Configuration:

- Probe: EX3DV4 - SN3801; ConvF(7.38, 7.38, 7.38); Calibrated: 2023/06/23;
- Sensor-Surface: 1.4mm (Mechanical Surface Detection)
- Electronics: DAE4 Sn1245; Calibrated: 2023/04/25
- Phantom: Twin SAM Phantom; Type: QD 000 P40 CD; Serial: 1609
- Measurement SW: DASYS52, Version 52.8 (8); SEMCAD X Version 14.6.10 (7331)

Configuration/Head/Area Scan (11x14x1): Measurement grid: dx=12mm, dy=12mm

Maximum value of SAR (measured) = 0.0200 W/kg

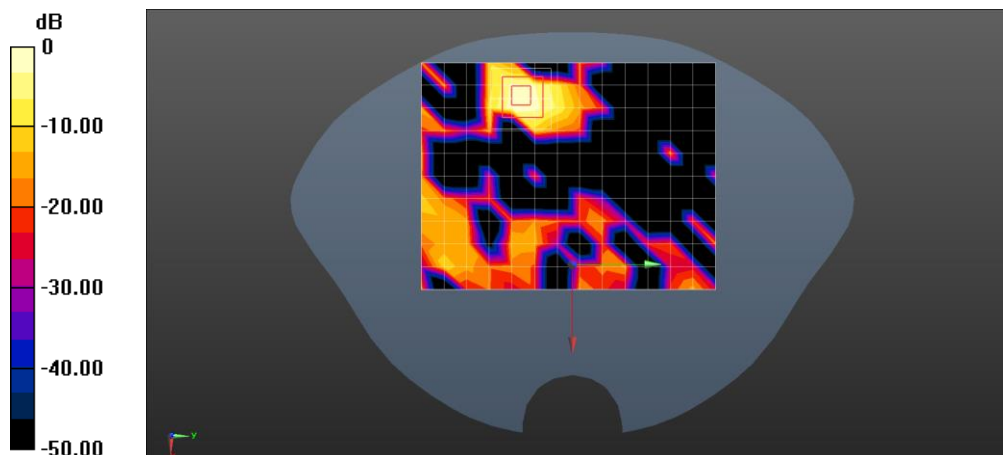
Configuration/Head/Zoom Scan (5x5x7)/Cube 0: Measurement grid: dx=8mm, dy=8mm, dz=5mm

Reference Value = 0 V/m; Power Drift = 0.06 dB

Peak SAR (extrapolated) = 0.0340 W/kg

SAR(1 g) = 0.015 W/kg; SAR(10 g) = 0.0044 W/kg

Maximum value of SAR (measured) = 0.0283 W/kg



Compliance Certification Services (Kunshan) Inc.

CCSEM-TRF-001 Rev. 02 Sep 01, 2023

Report No.: KSCR231000185801

Page: 69 of 70

Date: 2023/11/18

Test Laboratory: Compliance Certification Services (Kunshan) Inc.

WLAN5Ghz 802.11a Back side Ch157 0mm Antenna 1

DUT: Raptor Remote Controller; Type: RRC01

Communication System: UID 0, WiFi (0); Frequency: 5785 MHz; Duty Cycle: 1:1

Medium parameters used: $f = 5785 \text{ MHz}$; $\sigma = 5.294 \text{ S/m}$; $\epsilon_r = 34.831$; $\rho = 1000 \text{ kg/m}^3$

Phantom section: Flat Section

Measurement Standard: DASYS (IEEE/IEC/ANSI C63.19-2007)

DASY5 Configuration:

- Probe: EX3DV4 - SN3801; ConvF(4.89, 4.89, 4.89); Calibrated: 2023/06/23;
- Sensor-Surface: 1.4mm (Mechanical Surface Detection)
- Electronics: DAE4 Sn1245; Calibrated: 2023/04/25
- Phantom: Twin SAM Phantom; Type: QD 000 P40 CD; Serial: 1609
- Measurement SW: DASYS2, Version 52.8 (8); SEMCAD X Version 14.6.10 (7331)

Configuration/Head/Area Scan (11x17x1): Measurement grid: $dx=10\text{mm}$, $dy=10\text{mm}$

Maximum value of SAR (measured) = 15.2 W/kg

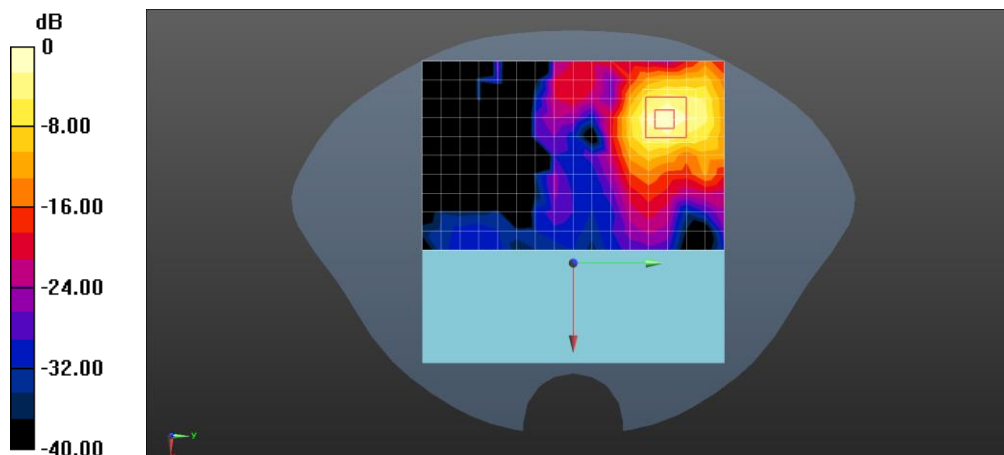
Configuration/Head/Zoom Scan (8x8x7)/Cube 0: Measurement grid: $dx=4\text{mm}$, $dy=4\text{mm}$, $dz=1.4\text{mm}$

Reference Value = 1.654 V/m; Power Drift = 0.06 dB

Peak SAR (extrapolated) = 26.6 W/kg

SAR(1 g) = 6.68 W/kg; SAR(10 g) = 2.35 W/kg

Maximum value of SAR (measured) = 15.9 W/kg



0 dB = 15.9 W/kg = 12.01 dBW/kg



Compliance Certification Services (Kunshan) Inc.

CCSEM-TRF-001 Rev. 02 Sep 01, 2023

Report No.: KSCR231000185801

Page: 70 of 70

Appendix C: Calibration certificate

Appendix D: Photographs

- End of the Report -