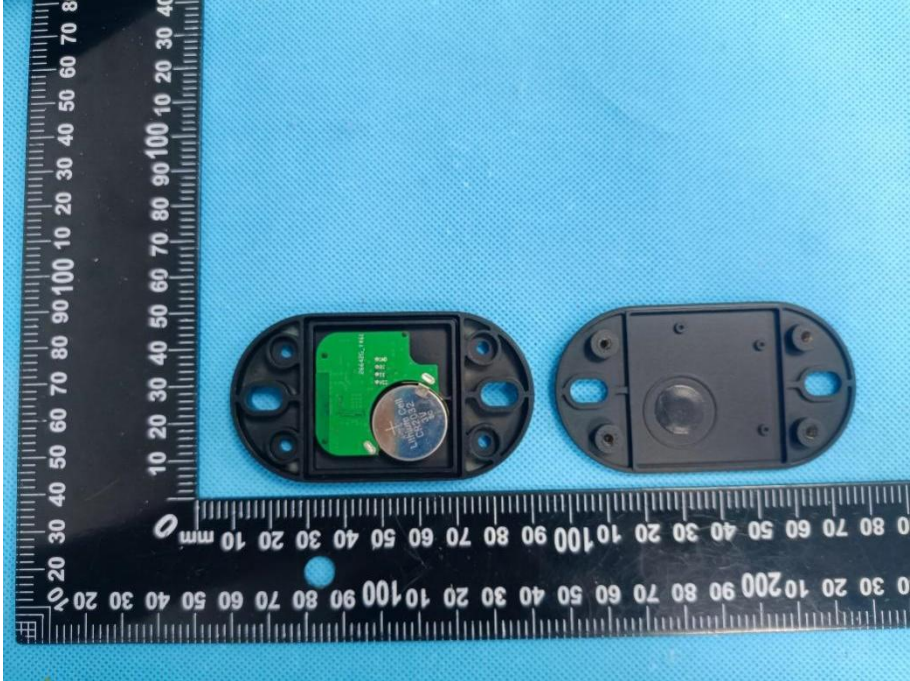
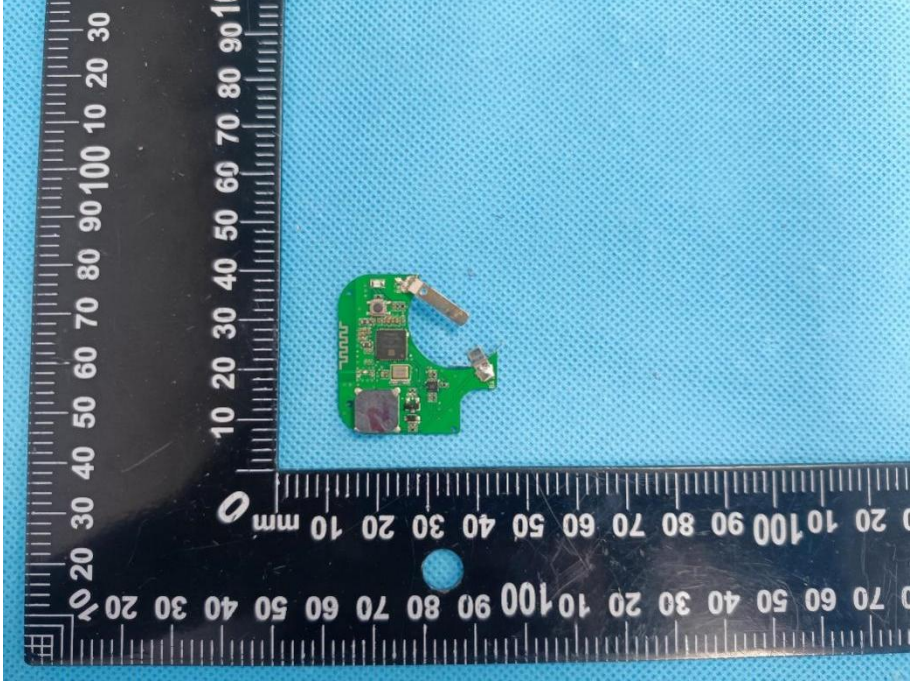


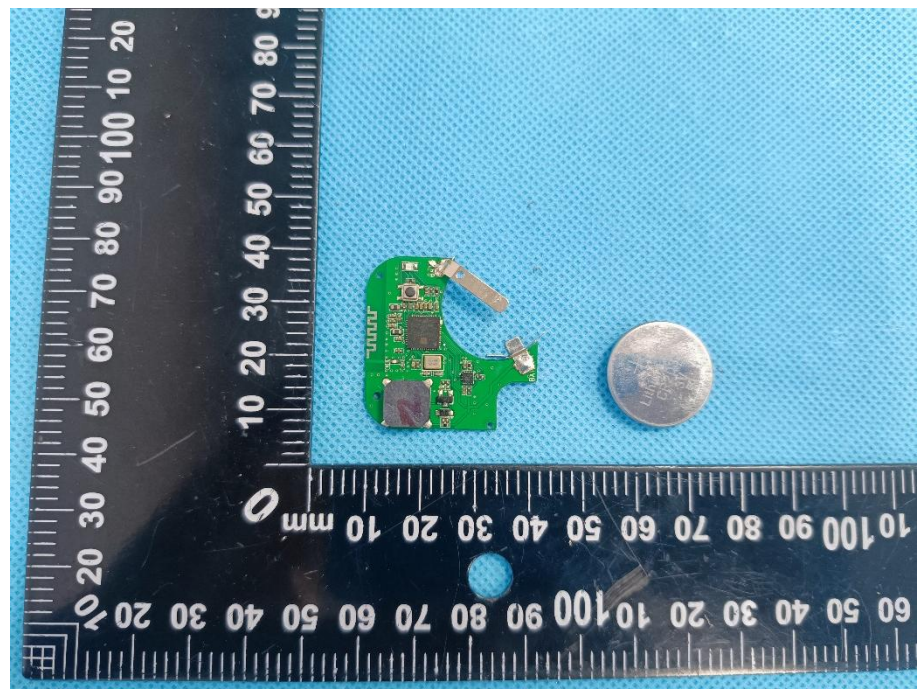
EXHIBIT 3 - EUT INTERNAL PHOTOGRAPHS

<p>EUT Housing and Board View 1</p>	 A photograph showing two views of an EUT housing and board assembly. On the left is the assembled unit with a green PCB and a silver coin cell battery. On the right is the empty black plastic housing. A black L-shaped ruler with white markings is placed below the components for scale. The background is a light blue textured surface.
<p>Solder Board-Component View 1</p>	 A close-up photograph of a small green PCB component with several soldered connections. A black L-shaped ruler with white markings is placed to the left and bottom of the component for scale. The background is a light blue textured surface.

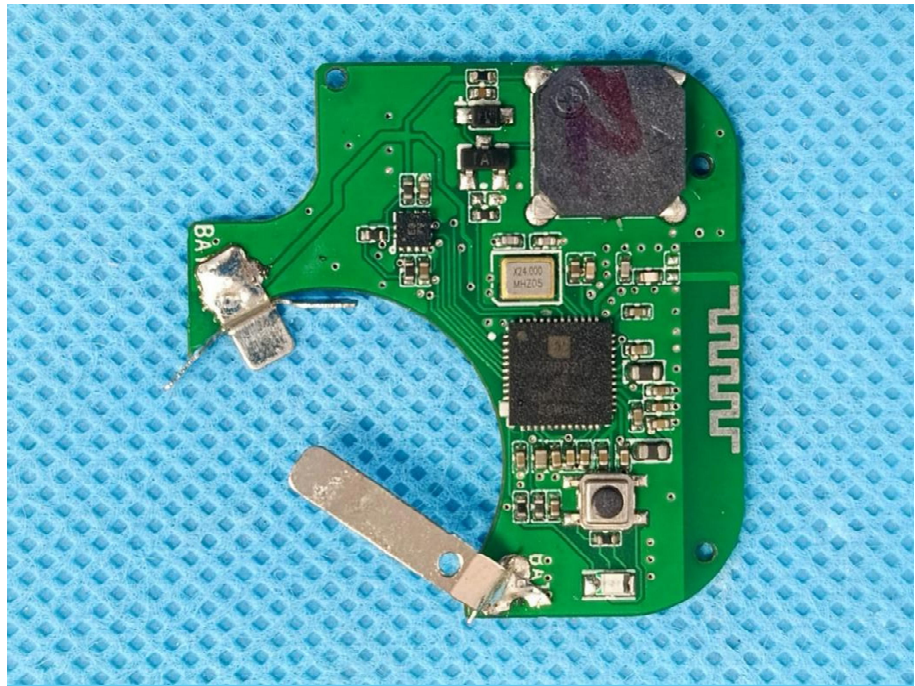
**Solder
Board-Component
View 2**



**Solder
Board-Component
View 3**



**Solder
Board-Component
View 4**



Antenna View

