

DOG TRAINING COLLAR



Important Safety Information:

WARNING

Not for use with aggressive dogs. Do not use this product if your dog is aggressive, or if your dog is prone to aggressive behavior. Aggressive dogs can cause severe injury and even death to their owner and others.

If you are unsure whether this product is appropriate for your dog, please consult your veterinarian or a certified trainer.

- For use with dogs over 6 months of age.
- DO NOT use when the dog or the collar is wet.
- DO NOT press and hold shock or vibrate for more than 10 seconds to avoid physical or psychological damage to your dog.
- Your dog should not vocalize or panic when receiving stimulation. If this happens, the stimulation level is too high and you need to go back to the previous level and repeat the process.
- DO NOT charge the device near any flammable substances.
- For dog use only. Not for use on children.
- This is not a toy, and should only be operated by a responsible adult.

CAUTION

For on-leash training. Do not attach a leash to the training collar. Use a regular collar in addition to the training collar.

Risk of skin damage. Please read and follow the instructions in this manual. Proper fit of the collar is important.

A collar worn for too long or made too tight on the dog's neck may cause skin damage. Ranging from redness to pressure ulcers; this condition is commonly known as bed sores.

- DO NOT leave the collar on the dog for more than 12 hours per day.
- When possible reposition the collar on the dog's neck every 1 to 2 hours.
- Check the fit to prevent excessive pressure; follow the instructions in this manual.
- Never connect a lead to the collar; It will cause excessive pressure on the contacts.
- Wash the dog's neck area and the contact probes of the collar weekly with a damp cloth.
- Examine the contact area daily for signs of a rash or a sore.
- If a rash or sore is found, discontinue use of the collar until the skin has healed. If the condition persists beyond 48 hours, see your veterinarian
- The Receiver meets the IP67 waterproof rating, it can be submerged in water up to 1 meter for up to 30 minutes. If submerged and wet, please do not use it.
- This product comes with conductive silicone covers, please ensure they are worn on the contact points before putting the Receiver on your dog and check for the presence of the silicone cover every hour.

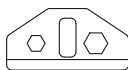
Package Content



Remote Transmitter



Receiver



Test Bulb Tool



Metal Prongs



Silicone Caps



Charging Cable



Rope of remote transmitter



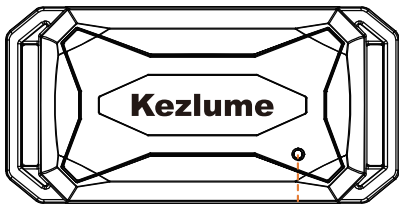
Snap ring of dog lead



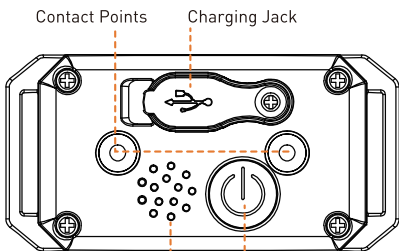
User Manual

Product Overview

Receiver



LED Indicator light



Contact Points

Charging Jack

Speaker

Power Button

Remote Transmitter



Note:

- (1) The "00" level is protection level without Electroshock Function.
- (2) The Remote Transmitter will turn to a sleep mode if no operation in 10 seconds.

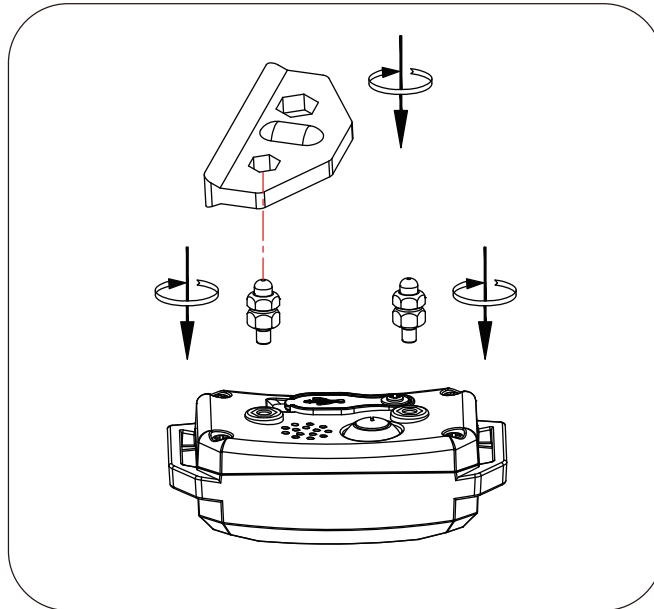
How the System Works

The Remote Training Collar is easy to use with an advanced digital display that tells you exactly what level of stimulation you are using.

The Remote Training Collar assists you in controlling your dog without a leash.

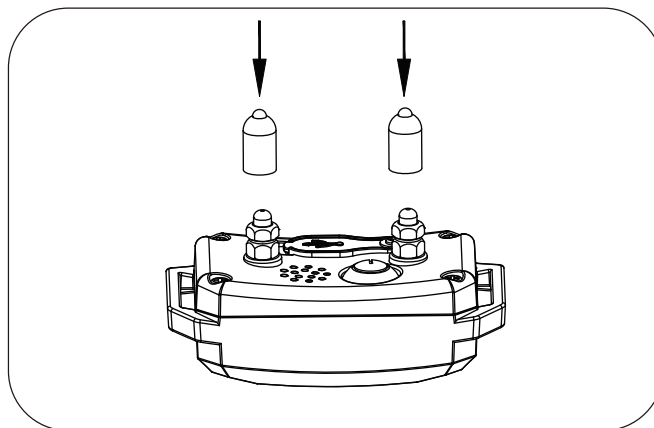
At the push of a button, your Remote Transmitter sends a signal activating your dog's Receiver. He receives a safe but annoying stimulation. He'll quickly learn the association between his behavior and your correction; in no time, you'll have a better-behaved dog. The Remote Training Collar has been proven safe, comfortable, and effective for both small and large dog breeds. Using the Remote Training Collar consistently and correctly, any basic obedience commands can be taught and will help to correct many misbehaviors that your dog exhibits.

Installation of Metal Prongs and Silicone Caps

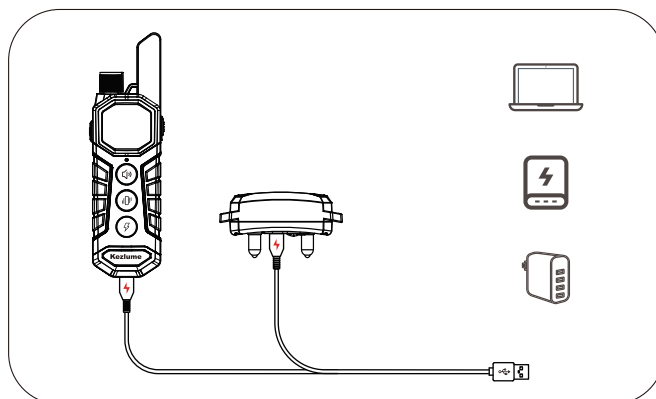


Choose a pair of metal prongs(long or short), install them to the receiver and lock by tools.

- For the dog with long and thick fur, long metal prongs are advised and then install them to the receiver.
- For the dog with short and sparse fur, short metal prongs are advised and then install them to the receiver.



Put the silicone caps to the metal prongs.



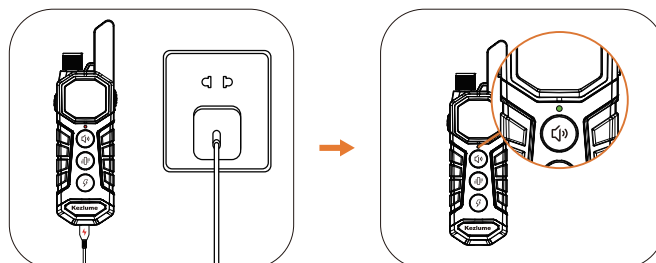
Charge the Receiver and the Remote Transmitter for 3 hours with the double-headed Micro-USB cable from the package box.

Note: The charger, power bank and other charging devices shown in the above picture are not included in the box.

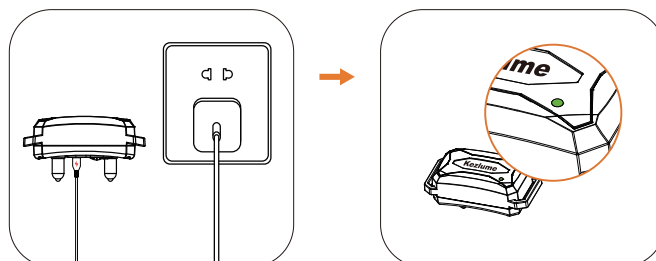
Setting Up

1. Charge the Product

Remote Transmitter: charge the device until the rapid flashing LED Indicator light becomes constantly on, which will take around 3 hours.



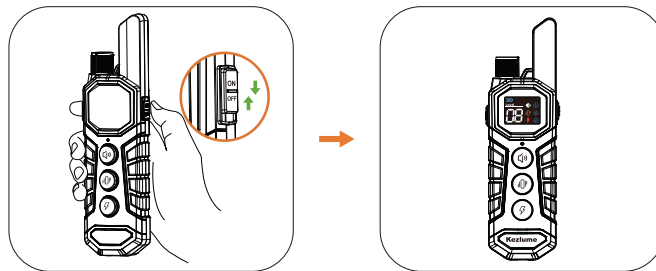
Receiver: charge the device until the rapid flashing LED Indicator light becomes constantly on, which will take around 3 hours.



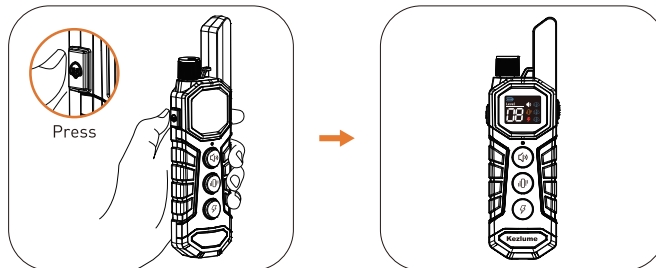
Warning:

Please charged by charge with 5V output, or product will be damaged when charger exceeds 5V output.

Turn On/Off the Product

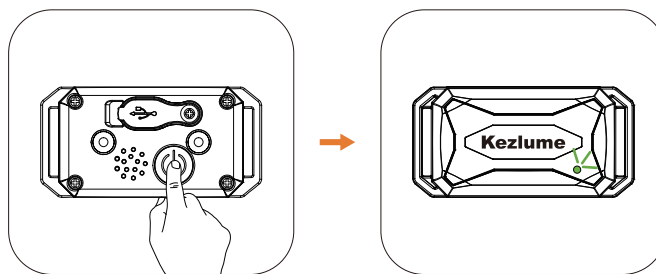


Turn on or turn off the the product by pushing up/down the the on/off key.



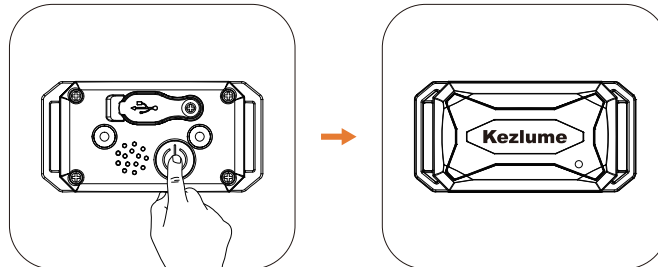
Press the Dog Switch Button to choose the Receiver you want to control if you have paired up two Receivers.

Note: The Remote Transmitter will go into the sleep mode if no operation in 10 seconds saving battery power.



A short press of the power button with slight vibration, Then the receiver will work and the indicator light will flash periodically.

Green indicator light flashes when the full power, Red indicator light flashes when low battery

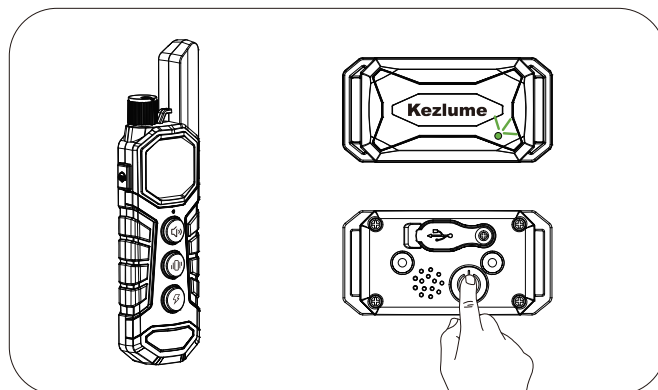


A long press of power button for 3 seconds with slight vibration, To turn off the receiver and the indicator light stops flash.

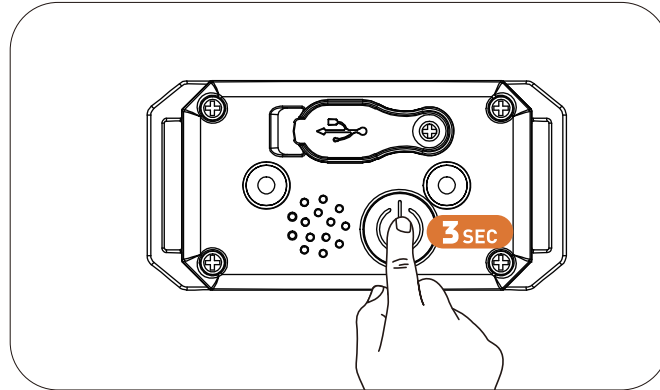
Pairing Up

If you feel the Receiver is not responding to the Remote Transmitter, follow the following steps to pair them up.

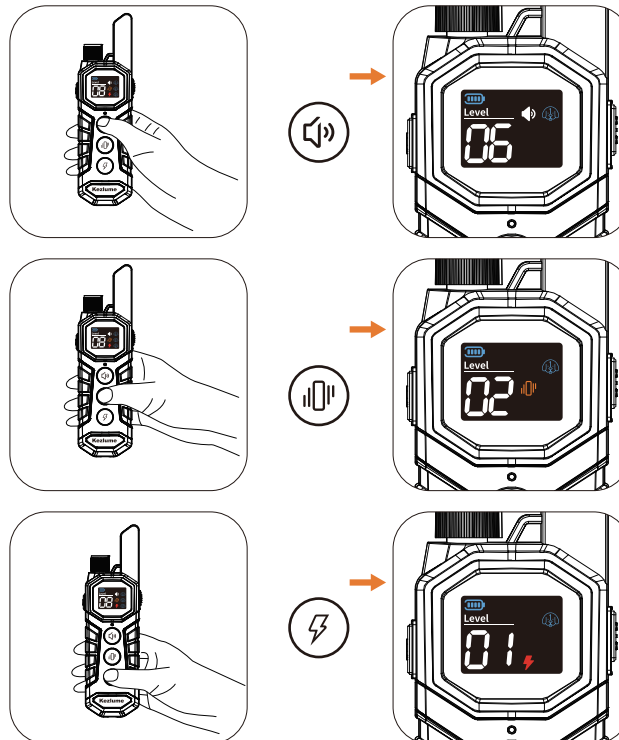
1. Long press the receiver power button for 3 seconds to turn off the receiver, Turn on the Remote Transmitter after Push ON/OFF Button.



2. In the off state, Long press receiver power button for 3 seconds until the indicator light flashes



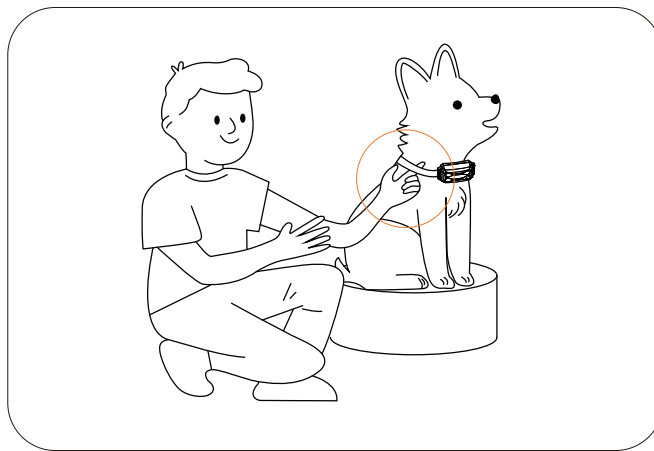
3. Press the function key (Sound or vibration function), the receiver will connect with corresponding functions success.



Tips:

The Receiver is paired up to the Remote Transmitter in Channel1 by factory default setting. If you buy a new Receiver, you can follow the above instruction to pair it up to Channel 2. The system can pair up to 3 Receivers in 3 different channels. If you cannot pair your device successfully, it may be due to signal interference. Please try pairing again in a different location or contact our service center.

Fitting the Receiver



Make your dog sit down and fit the Receiver to your dog by leaving one finger space between the collar and your dog's neck. Center the contact points underneath your dog's neck, touching the skin.

IMPORTANT:

The proper fit and placement of your Receiver are important for effective training. The Contact Points with Conductive Silicone Cover must have direct contact with your dog's skin on the underside of his neck. To assure a proper fit, please follow these steps:

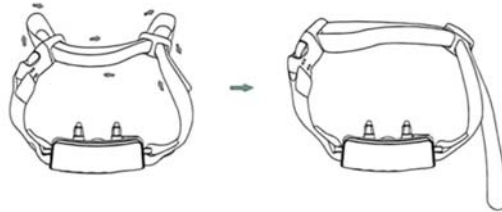
1. Make sure that the Receiver is turned off.
2. Let your dog stand on four feet or lay down fully (A).
3. Place the Receiver on your dog's neck close to the ears. Center the Contact Points underneath your dog's neck, touching the skin (B).

Note: It is sometimes necessary to trim the hair around the Contact Points to make sure that contact is consistent.

4. The Receiver should fit snugly, yet loose enough to allow one finger to fit between the strap and your dog's neck (C).
5. Allow your dog to wear the collar for several minutes then recheck the fit. Check the fit again as your dog becomes more comfortable with the Receiver.



6. How to adjust the length of the collar?

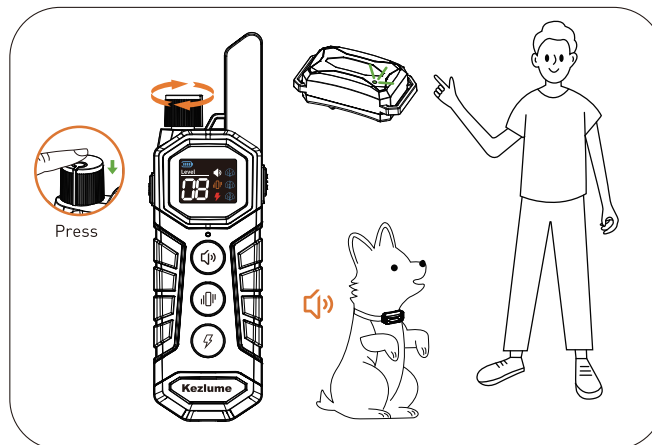


CAUTION:

Risk of Skin Damage. Too long time or too tightly fitting may cause pressure necroses, which are often misidentified as burns. Please follow the below instructions:

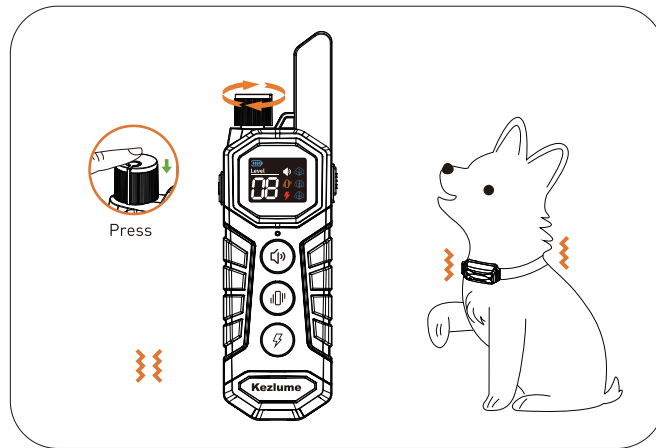
- Do not shave the dog's neck as this may increase the risk of skin irritation.
- Do not leave the Receiver on your dog's neck for continuous 12 hours.
- Never attach a leash to the collar.
- Never fit the Receiver too tight to your dog's neck.

Quick Start Guide



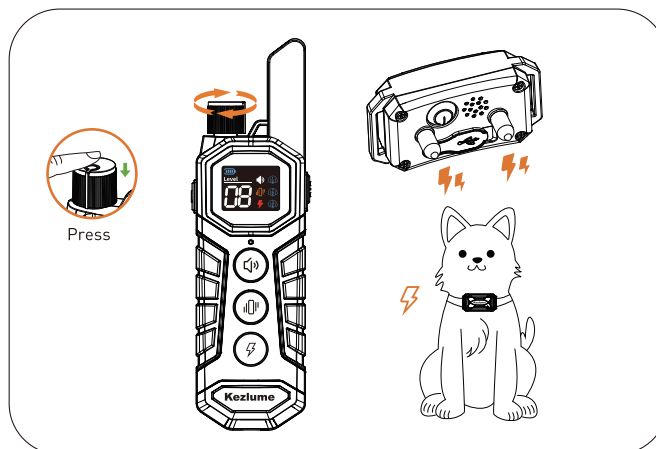
Warning Tone Command: Press the Warning Tone Button, and the green Indicator Light on the Remote Transmitter rapidly lights up. The Receiver will deliver a warning tone, and the green LED Indicator light on the Receiver comes up simultaneously.

To adjust the warning tone level, press the Adjustment Knob to select the Warning Tone Mode first, then turn the Adjustment Knob left and right to raise/lower to the desired level, and finally press any button (M)/(P)/(S) to confirm the modification.



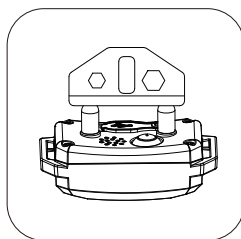
Vibration Command: Press the Vibration Button, and the green Indicator Light on the Remote Transmitter rapidly lights up. The Receiver will deliver vibration, and the green LED Indicator light on the Receiver comes up simultaneously.

To adjust the vibration level, press the Adjustment Knob to select the Vibration Mode first, then turn the Adjustment Knob left and right to raise/lower to the desired level, and finally press any button (⏏/⏏/⏏) to confirm the modification.

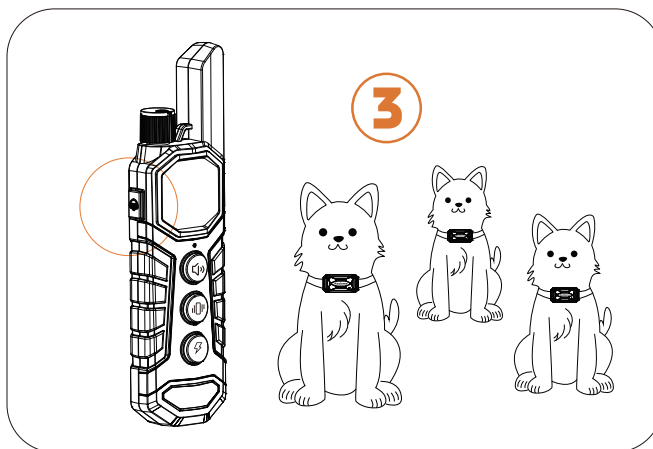


Warning Tone Command: Press the Warning Tone Button, and the red Indicator Light on the Remote Transmitter rapidly lights up. The Receiver will deliver a warning tone, and the red LED Indicator light on the Receiver comes up simultaneously.

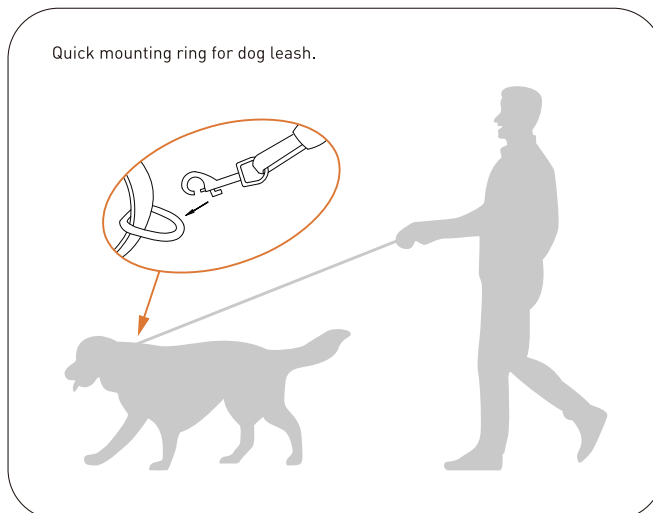
To adjust the warning tone level, press the Adjustment Knob to select the Warning Tone Mode first, then turn the Adjustment Knob left and right to raise/lower to the desired level, and finally press any button (⏏/⏏/⏏) to confirm the modification.



When testing the Shock function for the first time, place the Test Bulb kit on the Contact Points. The Test Bulb Kit lights up to indicate that the Shock function is working, and it will become brighter at higher shock levels.



Switch the channel by pressing the Dog Switch Button. This product can train up to 3 dogs.



Training Tip

HOW to find the best stimulation for your dog?

Important: Always start at the lowest level and work your way up. The Remote Training Collar has 8 types of Warning Tones, 8 levels of Vibration, and 16 levels of Shock. For Warning Tones, there are 8 types of Tones, with only frequency differences between the different types. For Vibration and Shock, level 1 is the lowest level; the highest level for Vibration is level 8, and level 16 for Shock.

This allows you to choose the Stimulation level best for your dog. Once you have placed the Receiver on your dog, it is time to find the Stimulation Level best for him. This is called the Recognition Level.

A slight change in your dog's behavior, such as looking around in curiosity, scratching at his collar, or flicking his ears, indicates the Recognition Level that is best for your dog.

Follow the steps below to find your dog's Recognition Level:

1. Starting at Level 1, press the Warning Tone/Vibration/Shock Button continuously for 1 to 2 seconds. Note: When the Warning Tone/Vibration/Shock Button is held down for 10 consecutive seconds, the Remote Transmitter will "time out", and you must release and press the button again before additional stimulation can be delivered.

2. If your dog shows no reaction, repeat the Stimulation Level several times before moving up to the next level.

3. YOUR DOG SHOULD NOT VOCALIZE OR PANIC WHEN RECEIVING STIMULATION. IF THIS HAPPENS, THE STIMULATION LEVEL IS TOO HIGH AND YOU NEED TO GO BACK TO THE PREVIOUS LEVEL AND REPEAT THE PROCESS.

4. Move up through the Stimulation Levels until your dog reliably responds to the stimulation.

5. If your dog continues to show no response at the highest level of Vibration or Static Shock, check the fit of the Receiver. If your dog has long or thick hair, contact our Customer Care Center to obtain a longer set of Contact Points. Then go back to #1 and repeat the process.

If this still does not yield any results, your dog's hair will need to be trimmed around the Contact Points. If after completing all of these steps, your dog still does not indicate he is feeling the stimulation, please contact our customer service.

How to Maximize the distance?

Terrain, weather, vegetation, transmission from other radio devices, and other factors will affect the maximum range.

Hold the Remote Transmitter in a horizontal position away from your body to achieve optimum range. For maximum signal strength, keep the device properly charged.



* Avoid touching the antenna or the range may decrease substantially.

Frequently Asked Questions

Q: Is the Stimulation safe for my dog?

Important: Always start at the lowest level and work your way up. The Remote Training Collar has 8 types of Warning Tones, 8 levels of Vibration, and 16 levels of Shock. For Warning Tones, there are 8 types of Tones, with only frequency differences between the different types. For Vibration and Shock, level 1 is the lowest level; the highest level for Vibration is level 8, and level 16 for Shock.

Q: How old does my dog have to be before using the Remote Training Collar?

A: Your dog should be able to recognize basic obedience commands such as "Sit" or "Stay". Dogs should be at least 6 months old before using the Trainer.

Q: Once my dog is trained and has been obeying my commands, will he have to continue to wear the Receiver?

A: Probably not. You may need to reinforce training with the Receiver from time to time.

Q: Is the Receiver waterproof?

A: Yes. The Receiver meets IP67 waterproof rating, but make sure to keep the area dry when charging.

Note: the Remote Transmitter is not waterproof.

Q: Will I get a maximum range with the Remote Training Collar?

A: The range of the Remote Training Collar will vary according to terrain, weather, vegetation, as well as transmission from other radio devices. See "How to Maximize the Distance" on page 15 for tips on maximizing your range.

Q: How long can I continuously deliver stimulation to my dog?

A: The maximum amount of time you can press the Warning Tone/Vibration/Shock button and deliver stimulation to your dog continuously is 10 seconds. After this, the Remote Transmitter will time out, and these stimulation buttons must be released and pressed again.

Trouble Shooting

1. My dog does not respond when I press a button.

- Make sure the Receiver has been turned on.
- If your range has reduced from the first time you used the Remote Training Collar, the battery may be low in either the Remote Transmitter or the Receiver.
- Many factors can impact the amount of range you have with the Remote Trainer. For a list of these factors, see "How to Maximize the Distance" on page 13.
- Test the Receiver with the Test Bulb Tool.
 - Turn the Receiver on.
 - Hold the Test Bulb Tool to the Contact Points on the Receiver.

- Press the Shock Button on the Remote Transmitter.
- The Test Light will flash. At higher shock levels, the Test Bulb Tool will flash brighter.

NOTE: If the Test Bulb Tool does not flash, recharge the Receiver and re-test. If the Test Bulb Tool still does not flash, contact our Customer Care Center.

- Increase the Stimulation Level. Refer to "HOW to find the best stimulation for your dog?" on page 13 for more information.
 - Make sure the Receiver's Contact Points are placed snugly against your dog's skin. Refer to "Fitting the Receiver" on page 9 for more information.
2. The Receiver will not turn on.
- Make sure the Receiver has been charged. For the initial charge, be sure to charge it for 4 hours. Subsequent charges only take 2–3 hours.
3. The Receiver is not responding to the Remote Transmitter.
- Verify the Receiver is on.
 - If the indicator is blinking rapidly, fully charge the Receiver.
 - If the above two solutions did not resolve the problem, please refer to on page 7 to re-pair the Receiver to the Remote Transmitter.

FCC Statement USA

Any Changes or modifications not expressly approved by the party responsible for compliance could void the user's authority to operate the equipment.

NOTE:

This equipment has been tested and found to comply with the limits for a Class B digital device, pursuant to part 15 of the FCC Rules. These limits are designed to provide reasonable protection against harmful interference in a residential installation. This equipment generates uses and can radiate radio frequency energy and, if not installed and used in accordance with the instructions, may cause harmful interference to radio communications.

However, there is no guarantee that interference will not occur in a particular installation. If this equipment does cause harmful interference to radio or television reception, which can be determined by turning the equipment off and on, the user is encouraged to try to correct the interference by one or more of the following measures: Reorient or relocate the receiving antenna.

However, there is no guarantee that interference will not occur in a particular installation. If this equipment does cause harmful interference to radio or television reception, which can be determined by turning the equipment off and on, the user is encouraged to try to correct the interference by one or more of the following measures:

- Reorient or relocate the receiving antenna.
- Increase the separation between the equipment and receiver.
- Connect the equipment into an outlet on a circuit different from that to which the receiver is connected.
- Consult the dealer or an experienced radio/TV technician for help. The device has been evaluated to meet general RF exposure requirement. The device can be used in portable exposure condition without restriction.