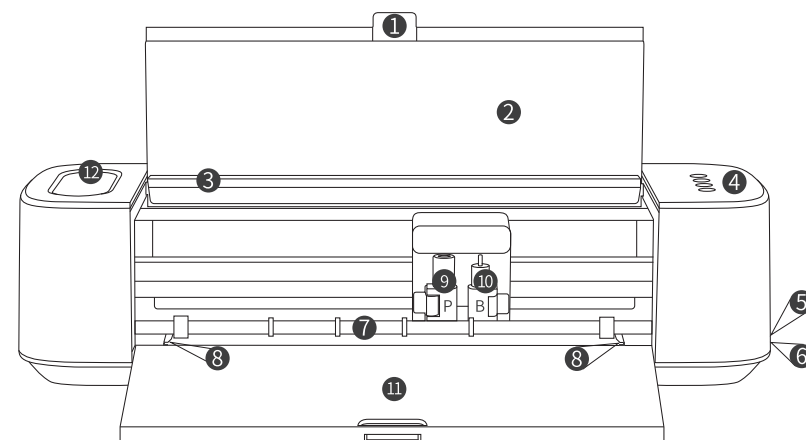




PRODUCT MANUAL OF
CUTTING MACHINE



“B”: Blade Clamp; “P”: Pen Clamp
 Note: Please insert the blade or pen into the right clamp.
 Otherwise, the machine will be damaged.

- | | | |
|---------------------------|----------------------|----------------------|
| 1. Holder | 5. Power Port | 9. (“B”) Blade Clamp |
| 2. Top Lid | 6. USB Port | 10. (“P”) Pen Clamp |
| 3. Slot for Mobile Device | 7. Material Guides | 11. Front Tray |
| 4. Buttons | 8. Cutting Mat Slots | 12. Storage Cup |

Included in Box

- Cutting Machine
 - Blade Housing
 - Fine-Point Blade (45°, Red) *2
 - Deep-Point Blade (60°, Blue) *2
 - Pen Housing (Only for LOKLIK & HTVRONT's Pens)
 - Pen
 - USB Cable
- Adaptor
 - Cutting Mat (Standard)
 - PU Heat Transfer Vinyl (Sample) *1
 - User Guide Envelop (Instructions, Quick-Start Guide, Warranty Card, and Brand Card)
 - 10,000+ Free Online Designs

Details of Buttons



Power: Long press the "Power" button to turn the machine on or off.



Pause: Short press the ""Pause"" button to pause or continue the task.
(Note: If you want to cancel the ongoing task, please pause it and delete it in LOKLIK Graphic Design Software.)



Load/Unload: Short press the ""Load/Unload"" button to load or unload the cutting mat and materials.
(Note: If you want to unload the material during cutting, please delete the ongoing task in LOKLIK Graphic Design Software. Do not pull out the cutting mat directly.)



Restart: When the ""Restart"" button flashes white, you need to change the material for the next layer.
(Note: If you need to replace the material, please unload the original material first and change it into the new one, then press the ""Restart"" button to start the new task.)

Check more step-by-step tutorial videos here: www.loklik.com/tutorialvideos.

LOKLIK Graphic Design Software Download Link: <https://loklik.com/download>.

If you have any questions or concerns, please check our official website: www.loklik.com.



Applicable Materials

Heat Transfer Vinyl, Adhesive Vinyl, Cardstock, Heat Transfer Paper.

(Note: Do not apply this product to felt, leather, soft wooden board, etc. Otherwise, the blade and the machine will get damaged.)

FCC warning:

This device complies with part 15 of the FCC Rules. Operation is subject to the following two conditions: (1) This device may not cause harmful interference, and (2) this device must accept any interference received, including interference that may cause undesired operation.

Any Changes or modifications not expressly approved by the party responsible for compliance could void the user's authority to operate the equipment.

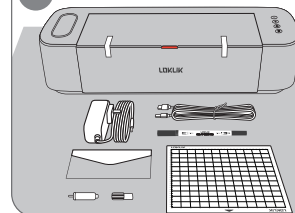
This equipment has been tested and found to comply with the limits for a Class B digital device, pursuant to part 15 of the FCC Rules. These limits are designed to provide reasonable protection against harmful interference in a residential installation. This equipment generates uses and can radiate radio frequency energy and, if not installed and used in accordance with the instructions, may cause harmful interference to radio communications. However, there is no guarantee that interference will not occur in a particular installation. If this equipment does cause harmful interference to radio or television reception, which can be determined by turning the equipment off and on, the user is encouraged to try to correct the interference by one or more of the following measures:

- Reorient or relocate the receiving antenna.
- Increase the separation between the equipment and receiver.
- Connect the equipment into an outlet on a circuit different from that to which the receiver is connected.
- Consult the dealer or an experienced radio/TV technician for help.

The antenna(s) used for this transmitter must be installed to provide a separation distance of at least 20 cm from all persons and must not be collocated or operating in conjunction with any other antenna or transmitter, End-Users must be provided with transmitter operation conditions for satisfying RF exposure compliance.

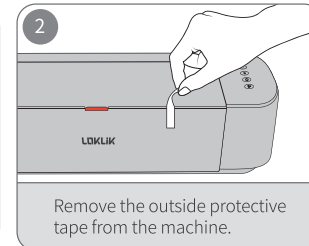
Installation

1



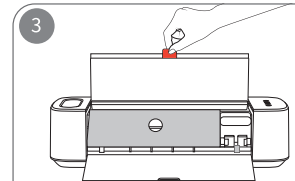
Take out the machine and the accessories from the package box and place them in a flat place.
(Note: Please leave 12 inches (300mm) in front of and behind the machine for further operation.)

2



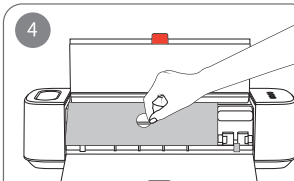
Remove the outside protective tape from the machine.

3



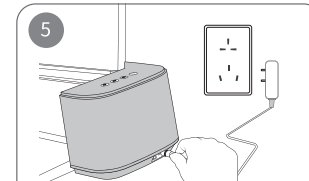
Pull the holder, and open the front and top lids

4



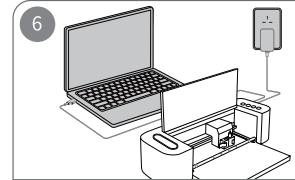
Take out the protective board and tear off the tapes.

5



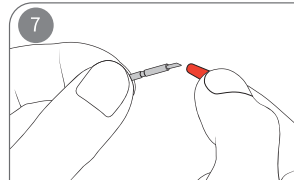
Connect the machine with an outlet via the adaptor.

6



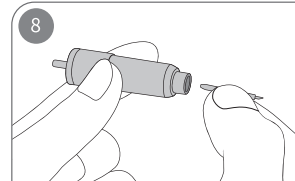
Connect the machine to a computer via USB or Bluetooth.

7



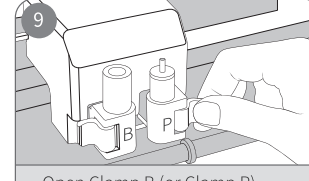
Take out the Blade Housing and a blade, and take off the blade's protective shell. (The red Fine-Point Blade is recommended.)

8



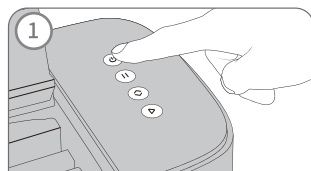
Insert the end without the blade into the Blade Housing. Or, insert the pen into the Pen Housing.
(Note: The blade is sharp, please be careful not to get cut.)

9

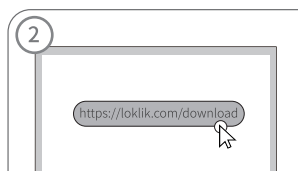


Open Clamp B (or Clamp P), insert the Blade (Pen) Housing and fasten the clamp.

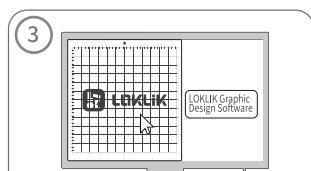
Instructions for use



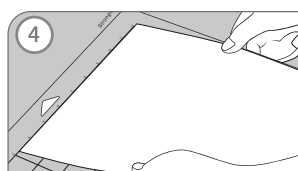
Long press the "Power" button to power the machine.



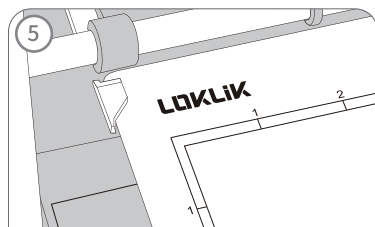
Download the app, LOKLIK Graphic Design Software, and connect it to the machine.
(Download Link: <https://loklik.com/download>)



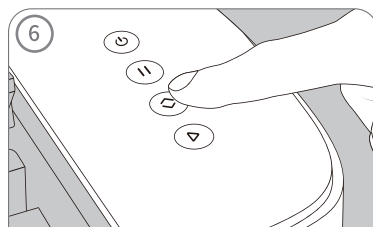
Open LOKLIK Graphic Design Software to design and edit your image.



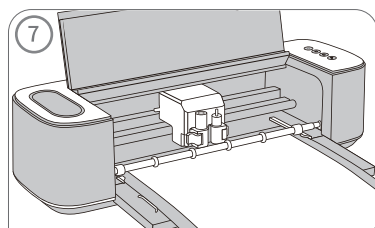
Pull off the clear film from your cutting mat and stick your material on the mat. (Note: Please make sure the cutting side of the material is facing up. Otherwise, the blade and the machine will get damaged.)



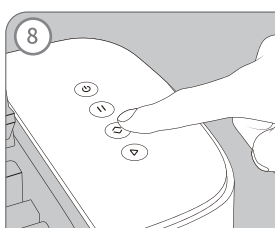
Align the cutting mat to the fixed slots and the material guides.



Hold the cutting mat gently and click "Load/Unload" to load the material into the machine.



After editing your image and settings, send the image to the machine to cut.



Press the "Load/Unload" button to unload the cut material and take it off the mat. (You can also use the app to unload the material.)

Cutting Force Calibration

Dear customers

It is recommended to calibrate the cutting force of the machine before the first use so as to get the best cutting performance. Please follow the steps below to do the test.

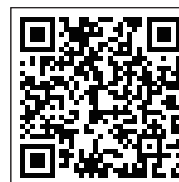
1. Please read the detailed installation method and instructions in the "Quick-Start Guide" before calibration.
2. Find "Cutting Force Calibration" in the "Help" in the LOKLIK Graphic Design Software and click to test.
3. Enter the best cutting force value into the blank and confirm the calibration to finish.

How to get the best cutting force value:

1. The vinyl layer has been cut through, while the protective film hasn't.
2. The cut image is smooth, flat, and with no burrs.

Precautions

1. This product is ONLY for household use. Do NOT use it outdoors;
2. This product has to be working on a stable and flat surface;
3. Please hold the main part of the adaptor firmly when unplugging the adaptor. Do NOT pull the adaptor cord directly;
4. Please disconnect the adaptor after use and before cleaning the product;
5. Please stop using the product immediately when there's malfunction or damage.
6. Keep your hands, head, and hair away from the machine while cutting, especially away from the moving parts.
7. Do not move the blade/pen clamps manually, or it will cause damage to the machine.
8. Children under 14 years old MUST have adult supervision while using the machine.



Scan the QR code below to access the list of materials and parameters suitable for cutting with your machine. Please note that we continually test new materials and update the list accordingly.

Product Name: Cutting Machine
Model: CM1 **Brand:** LOKLIK
Input Voltage: 100V/240V~50/60Hz

Output Voltage: DC24V 1.5A
Power Consumption: 36W
Size: 22in×7.3in×5.6in (56×18.5×14.2cm)