
Antenna specification

1、 Antenna introduction

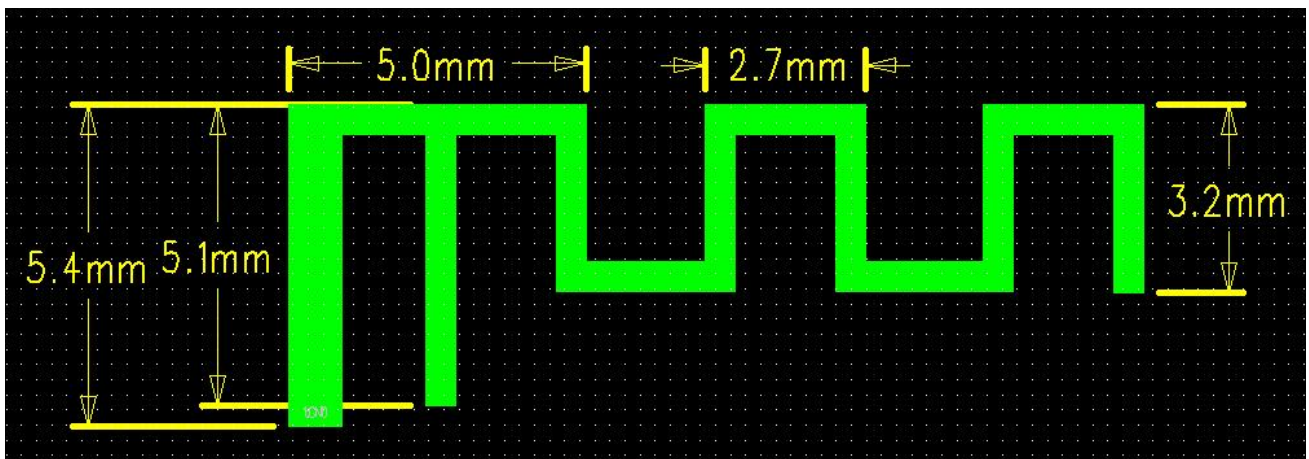
The Bluetooth module antenna is directly used on the PCB.

Manufacturer: Lenze Design Inc

Address : 7th Floor,Ching Po Building,Shenzhen Special Zone Press Group,Futian

District,Shenzhen

2、 Antenna shape



3、 Antenna parameter

The Bluetooth antenna operates at 2402-2480 MHz and generates resonance in this band. The table below shows the main parameters of the antenna.

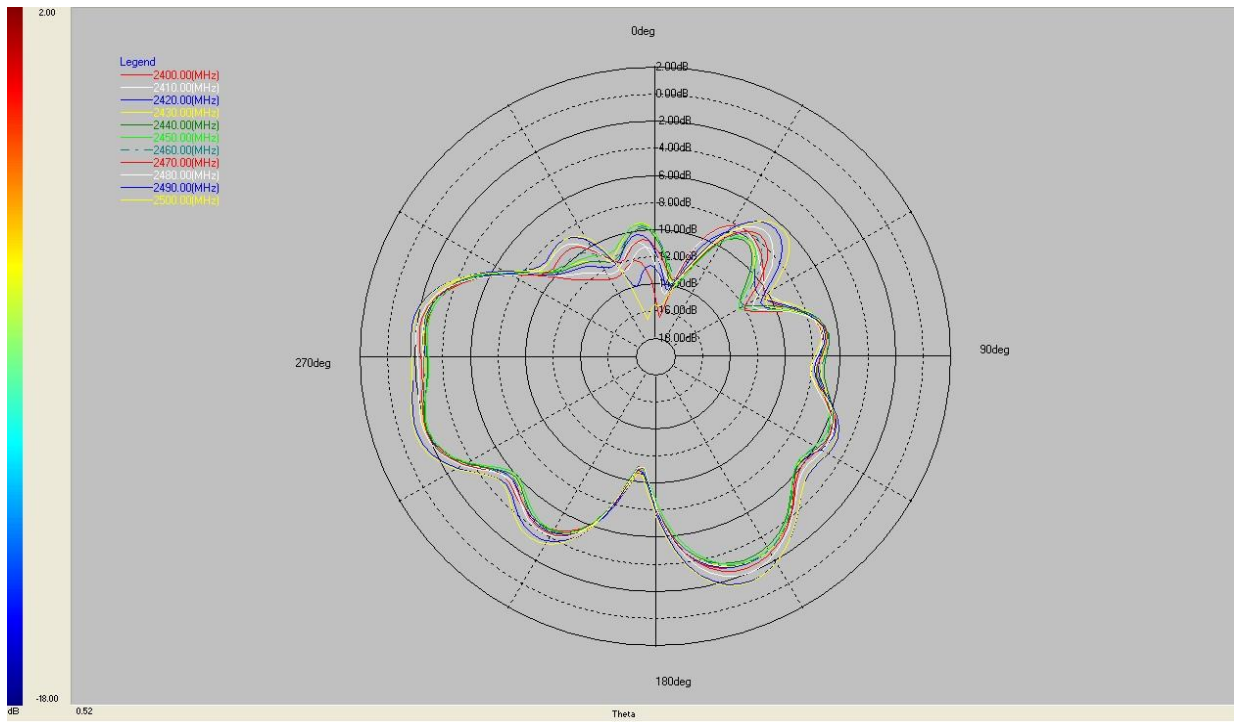
Frequency(MHz)	2402 ~ 2480 MHz
VSWR	≤ 1.95
Impedance	50 Ohm Nominal
Return Loss	-15 dB Max
Radiation	Omni-directional
Gain (Peak)	1.08 dBi
Polarization	Linear, Vertical
Admitted Power	1MW
Connector	Tin

4、 Antenna gain report

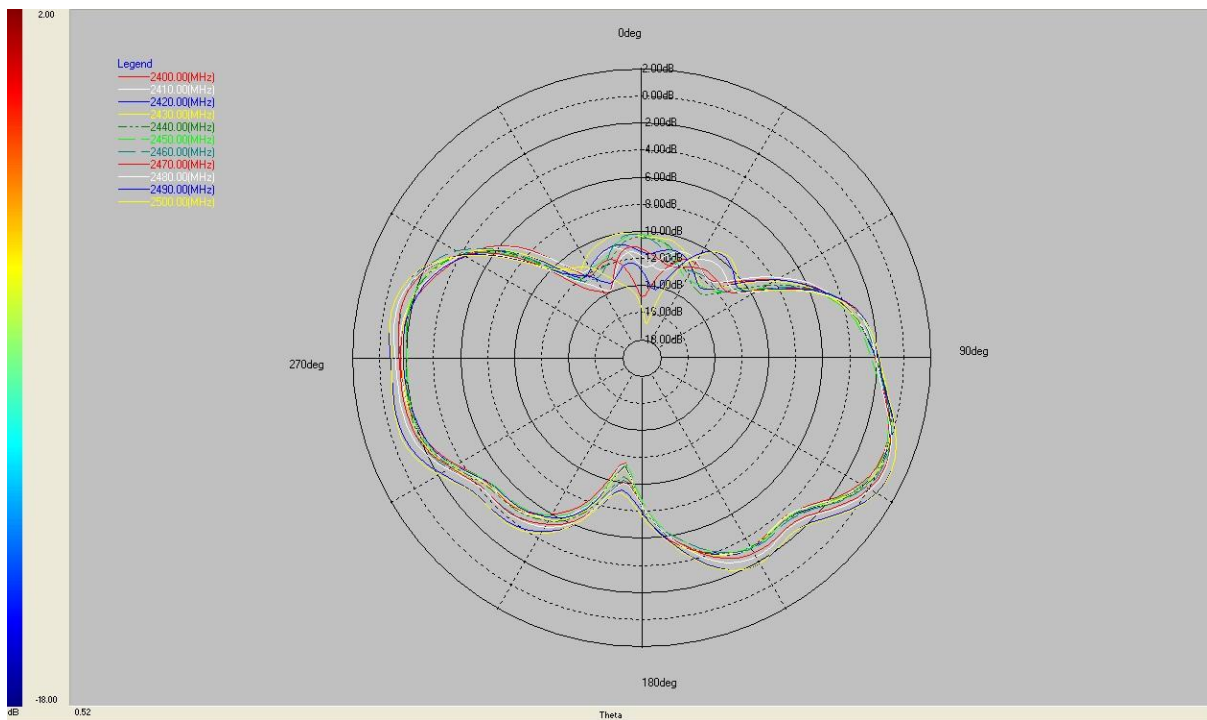
Spectrum Detector: PK Test Date : Feb 18, 2022
Test By: Mark Temperature : 25°C
Test Result: PASS Humidity : 52 %
Modulation: GFSK

Frequency VNA (MHz)	Gain Total. dBi
2400MHz	0.04
2410MHz	0.09
2420MHz	0.27
2430MHz	0.19
2440MHz	0.26
2450MHz	0.07
2460MHz	0.37
2470MHz	0.55
2480MHz	0.64
2490MHz	1.05
2500MHz	1.08

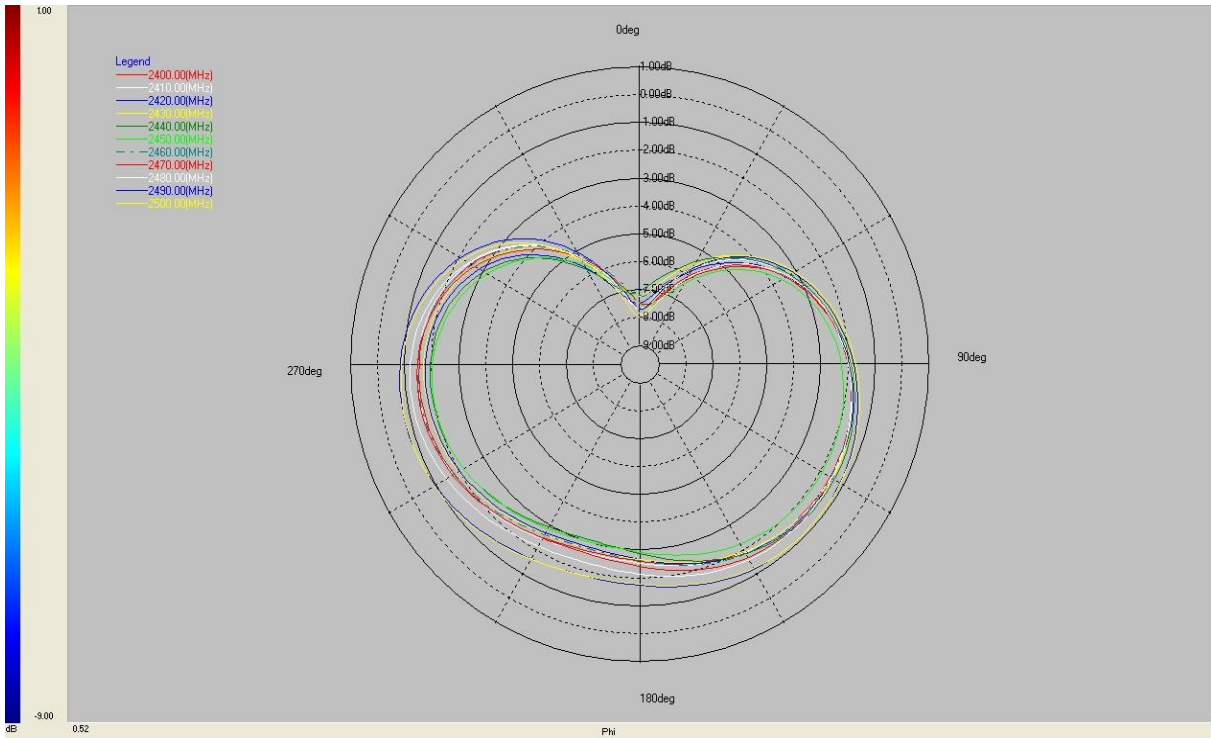
Direction map:



$\text{PHI } 0^\circ$



$\text{PHI } 90^\circ$



THETA 90°