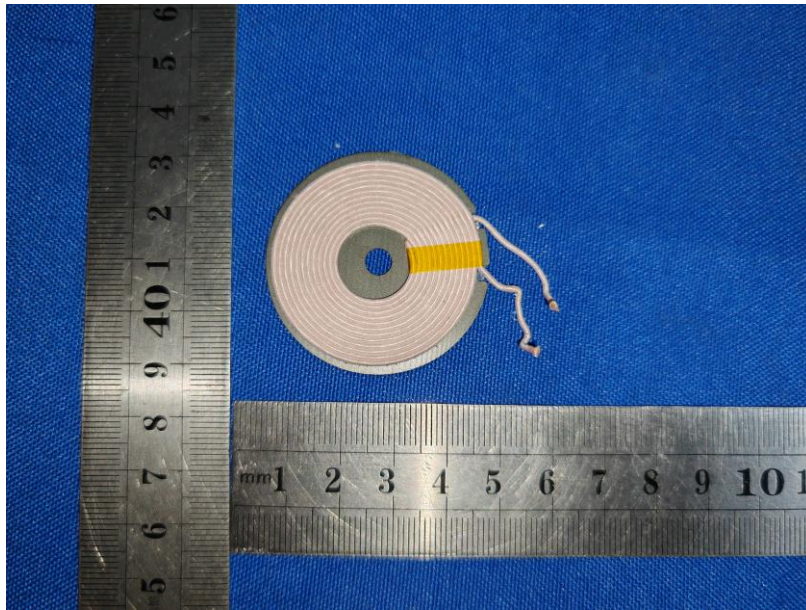
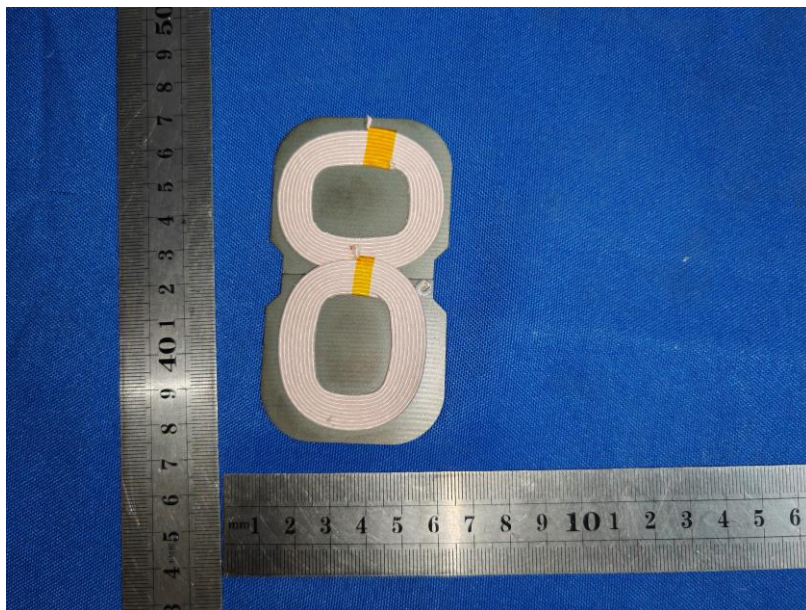


ANT PHTOT



L	W	H
47mm±0.2	47mm±0.2	0.2mm±0.1

ANT PHTOT



L	W	H
45mm±0.2	45mm±0.2	0.2mm±0.1

ANT PHTOT



L	W	H
19mm±0.2	19mm±0.2	0.2mm±0.1

All measurements were performed radiated and therefore additional antenna gain documentation is not required.