

Focus on UHF Special Tag

UHF Tag



Functional Specifications:

RFID Protocol:	EPC Class1 Gen2, ISO18000-6C
Frequency:	(US) 902-928MHz
IC type:	NXP Ucode 8
Memory:	EPC 128 bits , USER 0 bits, TID 96 bits
Write Cycles:	100,000 times
Functionality:	Read/write
Data Retention:	Up to 50 Years
Applicable Surface:	Off-metal surfaces
Read Range : (Fix Reader)	2.5m - (US) 902-928MHz, Off metal surfaces
Read Range : (Handheld Reader)	1.2m - (US) 902-928MHz, Off metal surfaces
Warranty:	1 Year

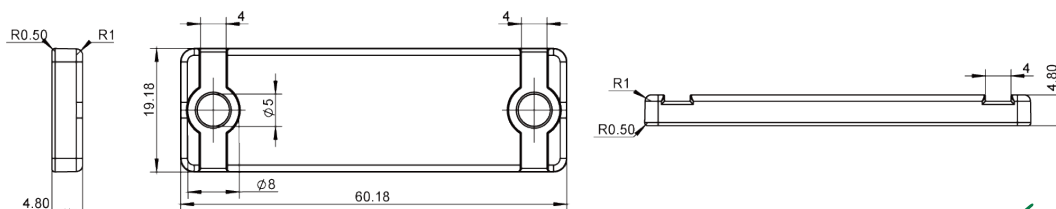
Physical Specification:

Size:	60.0x19.0mm, (Hole: D5.0mmx2)
Thickness:	4.8mm
Material:	PPS
Colour:	Black
Mounting Methods:	Adhesive, Screw, binding
Weight:	13g

Environmental Specification:

IP Rating:	IP68
Withstands Exposure To:	Fuel B, mineral oil, petroleum, salt mist, vegetable oil;
Storage Temperature:	-55°C to +200°C (230°C for 30 minutes, 180°C for 120minutes)
Operation Temperature:	-40°C to +150°C (working 10hours in 180°C)
Certifications:	Reach Approved, RoHS Approved, CE Approved

Dimensions:



FCC Warning:

This equipment has been tested and found to comply with the limits for a Class B digital device, pursuant to part 15 of the FCC Rules. These limits are designed to provide reasonable protection against harmful interference in a residential installation. This equipment generates, uses and can radiate radio frequency energy and, if not installed and used in accordance with the instructions, may cause harmful interference to radio communications. However, there is no guarantee that interference will not occur in a particular installation. If this equipment does cause harmful interference to radio or television reception, which can be determined by turning the equipment off and on, the user is encouraged to try to correct the interference by one or more of the following measures:

- Reorient or relocate the receiving antenna.
- Increase the separation between the equipment and receiver.
- Connect the equipment into an outlet on a circuit different from that to which the receiver is connected.
- Consult the dealer or an experienced radio/TV technician for help.

Caution: Any changes or modifications to this device not explicitly approved by manufacturer could void your authority to operate this equipment.

This device complies with part 15 of the FCC Rules. Operation is subject to the following two conditions:

(1) This device may not cause harmful interference, and (2) this device must accept any interference received, including interference that may cause undesired operation.

This equipment complies with FCC radiation exposure limits set forth for an uncontrolled environment. This equipment should be installed and operated with minimum distance 20cm between the radiator and your body.