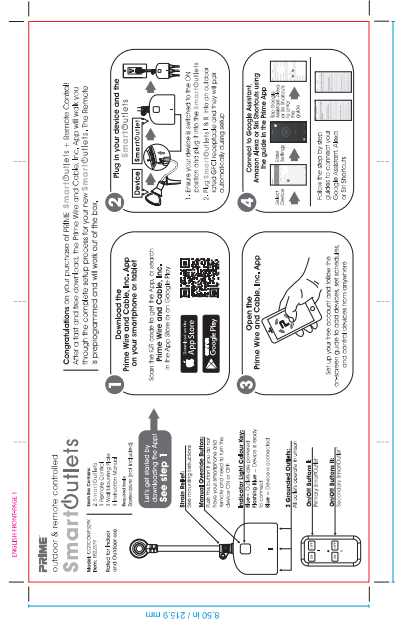


| | | | | | | |
|------------|---|----|---|------|---|-----|
| 1 | 2 | 3 | 4 | 5 | 6 | 7 |
| ECN NO. 编号 | | 日期 | | 变更内容 | | 变更者 |
| | | | | | | |

| | |
|--------------------|------------------------|
| PRIME SmartOutlets | |
| Model | POWERSOCKET-001 |
| Material | ABS |
| Color | White |
| Weight | 110g |
| Dimensions | 50mm x 140mm x 215.9mm |



PRIME
SmartOutlets
PRIME is a smart outlet that allows you to control your power outlets remotely through the SmartOutlets Prime app. It is designed to be used with a smartphone or tablet. The SmartOutlets Prime app is available on the App Store and Google Play.

SAFETY PRECAUTIONS
- Do not use the SmartOutlets Prime in wet or damp areas.
- Do not use the SmartOutlets Prime in areas with high temperatures or humidity.
- Do not use the SmartOutlets Prime in areas with high voltages or currents.
- Do not use the SmartOutlets Prime in areas with high magnetic fields.

INSTALLATION INSTRUCTIONS
1. Plug the SmartOutlets Prime into a standard wall outlet.
2. Plug your device into the SmartOutlets Prime.
3. Download the SmartOutlets Prime app on your smartphone or tablet.
4. Open the app and follow the instructions to connect to the SmartOutlets Prime.

REGULATORY STATEMENT
This product is designed to be used in accordance with the CE mark. It is not intended for use in areas where the use of electrical equipment is prohibited. It is not intended for use in areas where the use of electrical equipment is restricted. It is not intended for use in areas where the use of electrical equipment is limited. It is not intended for use in areas where the use of electrical equipment is controlled. It is not intended for use in areas where the use of electrical equipment is monitored. It is not intended for use in areas where the use of electrical equipment is restricted. It is not intended for use in areas where the use of electrical equipment is limited. It is not intended for use in areas where the use of electrical equipment is controlled. It is not intended for use in areas where the use of electrical equipment is monitored.

| | |
|------------------|-------------------------------------|
| 纸箱、纸盒、纸卡类 | |
| 尺寸 | 长(L) x 宽(W) x 高(h) 355.6*215.9mm |
| 材质 | 80g双胶纸 |
| 颜色 | / |
| 爆破强度 | / kgf/cm ² |
| 印刷颜色 | 4C |
| 表面处理 | / |
| 制作要求 | 无划痕、破损、脏污、受潮。 接驳位不能用金属钉。 |
| 备注: | 印刷不能掉色 |

| | |
|-------|-------|
| 产品信息 | |
| 工厂型号 | |
| 客户名称 | Prime |
| 客户型号 | |
| 线规/线长 | |

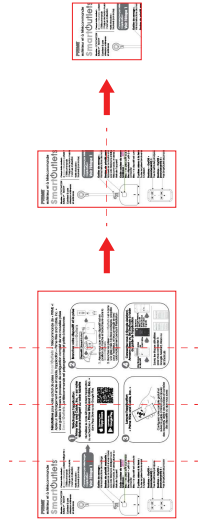


杭州凯特电器有限公司
HANGZHOU KAITE ELECTRICAL APPLIANCE CO.,LTD.

| | | |
|--------|----|-------|
| 机种 | 名称 | 说明书 |
| 料号 | 图号 | |
| 比例 1:1 | 视图 | 版本 A0 |
| 单位 mm | | |

| | | | |
|----|----|----|------------|
| 设计 | 李炎 | 日期 | 2024-03-21 |
| 审核 | | 日期 | |
| 核定 | | 日期 | |
| | | | |

| | |
|------|--|
| 图面公差 | |
| | |
| | |
| | |



14.00 in / 355.6 mm

5.50 in / 215.9 mm