



M7 Pro

产品使用手册

保修卡

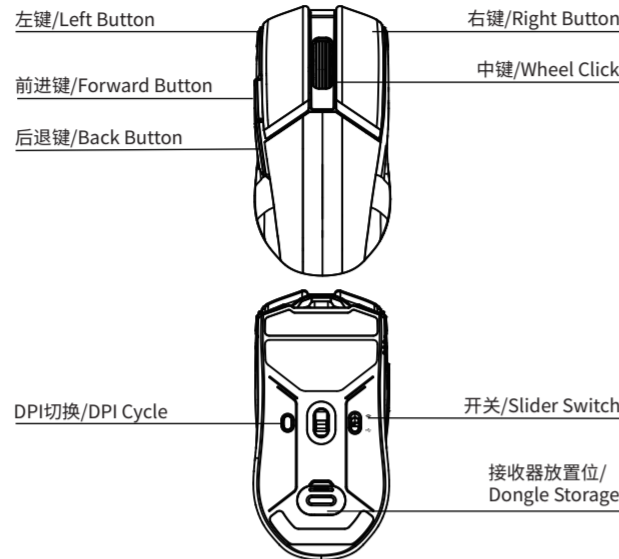
合格证

QUICK STRAT GUIDE

使用本产品前请仔细阅读指导手册，妥善保存以备参考。
Please read the instructions carefully before using this product and keep it well for referen.

M7 Pro双模鼠标操作指示说明书

按键布局/LAYOUT



模式介绍/Mode Introduction

- 2.4G模式/Wireless 2.4GHz Mode
- 有线模式/Wired Mode

产品安装及功能

一、连接方式：

1. 有线模式：

3104版本：有线模式：USB插上电脑；鼠标开机，开机后所有LED常亮，滚轮灯随DPI按键按压变化指示对应：DPI值800（红色）-1600（绿色）-2400（蓝色-默认值）-3200（紫色）-4000（橙色），鼠标LOGO灯与前侧LED灯为单色常亮模式；（驱动内可最大调节DPI到8000）

3395版本：有线模式：USB插上电脑；鼠标开机，开机后所有LED常亮，滚轮灯随DPI按键按压变化指示对应：DPI值800（红色）-1600（绿色）-2400（蓝色-默认值）-3200（黄色）-6400（粉色）-26000（橙色），鼠标底部LED左右两侧LED流光模式；

2. 2.4G模式：拨动开关拨到无线模式，鼠标开机，当接收器插入电脑连接后，所有LED常亮，其他功能不变；

二、对码：

2.4G模式下：开机完成后，按压滚轮+左键+右键 进入对码状态，滚轮灯黄灯闪烁（1S闪烁1次），持续闪烁3min；然后插入接收器到电脑USB（接收器与鼠标距离控制在20CM之内）；对码成功后滚轮灯光恢复DPI指示对应颜色常亮

三、灯光模式：

鼠标氛围灯默认单色常亮模式（组合键（滚轮+后侧键）控制灯光模式---单色常亮（默认）、单色闪烁、单色呼吸、单色循环呼吸、关闭；单色光模式下可以组合键（滚轮+前侧键）调节氛围灯灯光颜色）

更多参数及模式调节，请登录www.machenike.com下载机械师M7 Pro双模鼠标驱动进行设置

四、光标移动省电：

2.4G无线模式下，鼠标移动光标时尾部氛围灯熄灭省电；光标停止恢复灯光（可在驱动关闭）

五、休眠：

2.4G模式下和2.4G省电模式下，鼠标不使用3min后 鼠标进入休眠状态（2.4G模式的LED灯熄灭）进入轻度休眠模式，移动自动唤醒;30分钟之后进入深度休眠；点击按键唤醒；有线模式下无休眠功能

六、充电：

当电压小于3.5V时，低电指示灯（电量指示灯为冰蓝色灯+滚轮为红色灯）闪烁（1s闪烁两次），当低于3.2V时 鼠标自动关机。充电电压支持最高10V；充电电流不大于1A

产品参数

型号	3104版	3395版
连接模式	有线+2.4G无线	有线+2.4G无线
传感器	原相3104	原相3395
DPI	8000DPI	26000DPI
回报率	1000Hz(有线+2.4G无线)	1000Hz(有线+2.4G无线)
灯光	五种灯效(包括无光)	五种灯效(包括无光)
电池	600mAh	600mAh
驱动	有	有
尺寸	约124/62/38mm	约124/62/38mm
重量	75g±5g	75g±5g
执行标准	GB/T 26245-2010	GB/T 26245-2010

注意事项

- 鼠标移动点击无反应：可能是USB接口没有连接上电脑，请确认鼠标已连接电脑；
- 鼠标移动过慢或过快：可能DPI设定与个人习惯不匹配调整DPI适应个人习惯即可
- 有不能解决的问题，请不要自行拆卸，请联系销售商家；
- 若充电线或适配器丢失，可联系销售商家进行购买

产品清单：鼠标、接收器、数据线、产品使用手册



官方微信服务号

INSTALLATION & FUNCTION

Connecting Your Mouse:

A.Via Wired Mode

Connect the mouse to any of your PC's USB ports using the charging cable to use it in wired mode. Upon startup, all LEDs will remain lit.

DPI Indicators:

3104 Version: The scroll wheel light will indicate the corresponding DPI value: 800 (red) - 1600 (green) - 2400 (blue - default value) - 3200 (yellow) - 6400 (pink) - 26000 (orange). The LEDs on the left and right sides of the bottom of the mouse are in a flowing light mode.

3395 Version: The scroll wheel light will indicate the corresponding DPI value: 800 (red) - 1600 (green) - 2400 (blue - default value) - 3200 (yellow) - 6400 (pink) - 26000 (orange). The LEDs on the left and right sides of the bottom of the mouse are in a flowing light mode.

B.Via 2.4GHz Wireless Mode

1, Push the slider switch to the wireless mode.
2, Connect the Wireless Dongle of your mouse to your PC's USB ports.
3, After the connection is established, all LEDs will remain lit and other functions will remain the same.

Paring:

1, In 2.4G mode, after the mouse completes its startup, press the Wheel Click+left+right buttons to enter the paring mode.
2, The scroll wheel light will blink yellow (1 blink per second), and will continue blinking for 3 minutes.
3, Then, insert the receiver into the USB port on your computer (the distance between the receiver and the mouse should be within 20cm).
4, Then, insert the receiver into the USB port on your computer (the distance between the receiver and the mouse should be within 20cm).

For more parameter and mode adjustments, please visit <https://global.machenike.com/> and download the driver for the Mechanic M7 Pro Dual-mode mouse to make the settings.



合格证
QUALIFIED CERTIFICATE

检验
MACHENIKE CERTIFIED

Lighting:

The mouse's atmosphere light defaults to a steady single-color mode.

Wheel Click+Back Button : Switch lighting mode (color steady (default), single-color flashing ,single-color breathing, single-color cycling breathing, and off.)
Wheel Click+Back Button : Adjust the color in single-color mode.

For more settings, please visit <https://global.machenike.com/> to download the Mechanic M7 Pro dual-mode mouse driver and configure your preferences.

Power Saving Mode:

Under the 2.4G wireless mode, the tail ambient light of the mouse cursor will turn off to save power when the cursor is moved; the light will resume when the cursor stops (this can be disabled in the driver).

Sleep Mode:

In 2.4G mode and 2.4G power-saving mode, the mouse will enter sleep mode if it is not used for 3 minutes.

In 2.4G mode, the LED light on the mouse will turn off and enter a light sleep mode, which will be automatically awakened by movement. After 30 minutes, it will enter a deep sleep mode and can be awakened by clicking any button. There is no sleep function in wired mode.

Charging:

When the voltage is below 3.5V, the low battery indicator light (the battery indicator light is an ice blue light and the scroll wheel is a red light) will flash (two flashes per second).

When the voltage drops below 3.2V, the mouse will automatically shut down. The charging voltage supports up to 10V; the charging current should not exceed 1A.

Tech Specs

MODEL	3104 Version	3395 Version
CONNECTIVITY	Wired + 2.4GHz Wireless	Wired + 2.4GHz Wireless
SENSOR	Pixart 3104	Pixart 3395
DPI	8000DPI	26000DPI
POLLING RATE	1000Hz (In Dual Mode)	1000Hz (In Dual Mode)
LIGHTING	5 lighting effects	5 lighting effects
BATTERY	600mAh	600mAh
DRIVER SUPPORT	Available	Available
DIMENSION	Approx.124/62/38mm	Approx.124/62/38mm
NET WEIGHT	75g±5g	75g±5g

Troubleshooting

*No response when clicking/moving the mouse:
It may be that the USB interface is not connected to the computer. Please confirm that the mouse is connected to the computer.

*Mouse moves too slow or too fast:
It may be that the DPI setting does not match personal preferences. Adjust DPI to suit personal preferences.

*If there are any issues that cannot be resolved, please do not attempt to dismantle the mouse. Please contact the seller for assistance.

Packing Contents: M7PRO Mouse, 2.4GHz Wireless Dongle, Data Cable, User Manual



If there are any issues that cannot be resolved, please contact the seller for assistance.

MACHENIKE产品保修承诺

1、在用户按本技术使用说明书正确使用该产品的前提下，本产品自购买之日起一年内免费保修。
2、我方因下列使用者个人的原因而造成的故障将不提供免费保修服务。如：

- 擅自拆装、改装该产品而造成的故障；
 - 在使用、搬运的过程中不慎摔打、跌落、进液、供电规格不符而造成的故障；
 - 因缺乏合理的保养而造成的故障；
 - 没有按使用说明书正确指示进行操作；
 - 第三方厂品、服务或行为导致的故障或损坏等等。
- 3、在要求提供免费保修服务时，您必须提供清晰、完整和准确的销售发票和保修卡，购买产品时，可要求销售商提供上述上述销售发票和保修卡。
4、保修范围外的维修服务，将按规定收费。

保修卡

尊敬的用户：

感谢您选购本公司产品，我公司将按照《中华人民共和国消费者权益保护法》和国家技术监督局、国家工商行政管理局、财政部关于《部分商品修理更换退货责任规定》的有关规定，为您提供保修服务，请认真填写此卡并妥善保管，以便日后凭此卡维修。

客户姓名：_____ 电子邮件：_____

联系电话：_____ 邮政编码：_____

通信地址：_____

产品名称：_____ 产品型号：_____

购机日期：_____

购机渠道：_____

机身编号：_____

产品性能故障表

送修日期	性能故障描述	工程师签字	完成日期

备注：

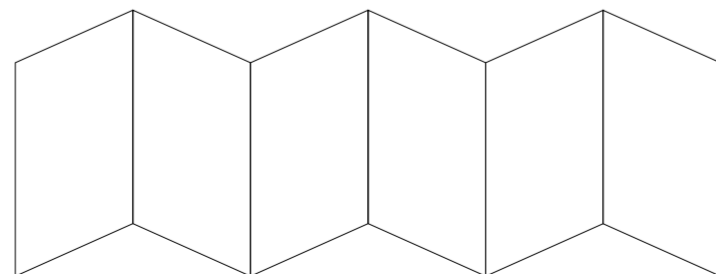
- 请妥善保管此卡，保修时需出示此卡及购买凭证。
 - 产品自购买之日起，凭购买凭证整机免费保修1年。
 - 下列情况不属于免费服务范围，但可实行收费维修、终身服务；
- 不能出示保修说明及发票；
 - 发票涂改；
 - 意外因素或使用不当造成损坏；
 - 未经我司许可，自行修理造成的损坏；
 - 超过三包有效期，经修复仍可继续使用；

产品中有害物质的名称及含量						
部件名称	有害物质					
	铅 (Pb)	汞 (Hg)	镉 (Cd)	六价铬 (Cr(VI))	多溴联苯 (PBB)	多溴二苯醚 (PBDE)
电路板组件	×	○	○	○	○	○
外壳及附件	○	○	○	○	○	○

本表格依据SJ/T 11364-2014的规定编制。
○:表示该有害物质在该部件所有均质材料中的含量在 GB/T 26572-2011规定的限量要求以下。
×:表示该有害物质至少在该部件的某一均质材料中的含量超出 GB/T 26572-2011规定的限量要求。
表中标记“×”的部件皆因便于技术发展水平限制而无法实现有害物质替代。
印刷电路板组件：包括印刷电路板及基零部件,电子元器件等根据产品型号不同:您所购买的产品可能不会含有以上所有部件。

标志内的数字代表在正常的使用状态下的产品的环保使用期限。
《废弃电器电子产品回收处理管理条例》
机械师倡导环保和低碳的消费体验,建议拥有该产品的用户在不需此产品时,应遵守国家废弃电器电子产品回收处理相关法律法规,将其交给当地具有国家认可的回收处理资质的厂商进行回收处理,降低资源浪费,保护地球自然环境。

尺寸：90*110MM
材质：120g书写纸
印刷：黑白双面印刷



This device complies with part 15 of the FCC Rules. Operation is subject to the following two conditions: (1) This device may not cause harmful interference, and (2) this device must accept any interference received, including interference that may cause undesired operation.

Any Changes or modifications not expressly approved by the party responsible for compliance could void the user's authority to operate the equipment.

Note: This equipment has been tested and found to comply with the limits for a Class B digital device, pursuant to part 15 of the FCC Rules. These limits are designed to provide reasonable protection against harmful interference in a residential installation. This equipment generates uses and can radiate radio frequency energy and, if not installed and used in accordance with the instructions, may cause harmful interference to radio communications. However, there is no guarantee that interference will not occur in a particular installation. If this equipment does cause harmful interference to radio or television reception, which can be determined by turning the equipment off and on, the user is encouraged to try to correct the interference by one or more of the following measures:

- Reorient or relocate the receiving antenna.
- Increase the separation between the equipment and receiver.
- Connect the equipment into an outlet on a circuit different from that to which the receiver is connected.
- Consult the dealer or an experienced radio/TV technician for help.

RF warning for Portable device: The device has been evaluated to meet general RF exposure requirement. The device can be used in portable exposure condition without restriction.