

PHILIPS

Home Access

Video doorbell

7000 series

User Manual

Register your product and get support
at www.philips.com/support

PMN:Philips 2K Dual-Cam Video Doorbell



Contents

1 Warnings & Safety 02

Safety
Caution
Returns & Disposal

2 Product Introductions 03

Parts List
Video Doorbell Overview
Wi-Fi Chime Overview
How It Works

3 How to Setup 08

Download the Philips Home Access App
Create a User Account
Add the Philips WiFi Chime

4 How to Install 11

Determine the Power Option
Battery Powered
Wires Powered

5 Feature instructions 27

6 Warranty 28

7 FCC Statement 29

8 ISED Statement 30

1 Warnings & Safety

Safety

- ◆ Before using this product, please read and understand all instructions. Damage caused by failure to follow the instructions is not covered by the warranty.
- ◆ Only use components the manufacturer provided and suggested accessories.
- ◆ Do not forcibly disassemble the product to trigger an alarm or damage the product.
- ◆ Connect the video doorbell to a low-voltage 8-24V AC power supply when powering it with wires, or it might cause abnormal operation or damage to the device.

Caution

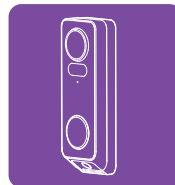
- ◆ Do not place the device near fire sources.
- ◆ Do not connect the 2 poles of the devices to metals to avoid a short circuit and potential explosion.
- ◆ Any replacement component should be performed by Philips, a Philips-authorized service center, or a professional technician.
- ◆ Do not use parts or accessories manufactured by others.
- ◆ Do not soak the device in water.
- ◆ Do not expose the Wi-Fi Chime or Video Doorbell to places that have water leakage or splashing.

Returns & Disposal

- ◆ Video doorbells can be returned at an authorized Philips service center. Appropriate compensation will be provided if the returned product meets Philips's conditions.
- ◆ Please follow local regulations and do not throw the used products or batteries into normal household waste.

2 Product Introductions

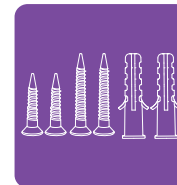
Parts List



① Video Doorbell



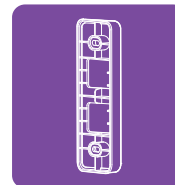
② Wi-Fi Chime



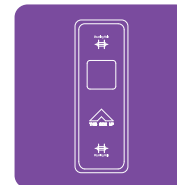
③ Screw Pack



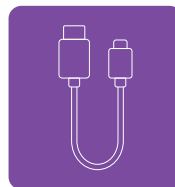
④ Mounting Bracket



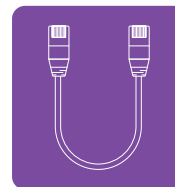
⑤ 15° Mounting Wedge



⑥ Screw Hole Positioning Card



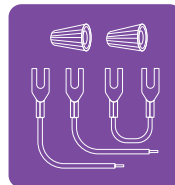
⑦ USB A to C Charging Cable



⑧ Ethernet Cable



⑨ Detaching Pin



⑩ Wiring Pack

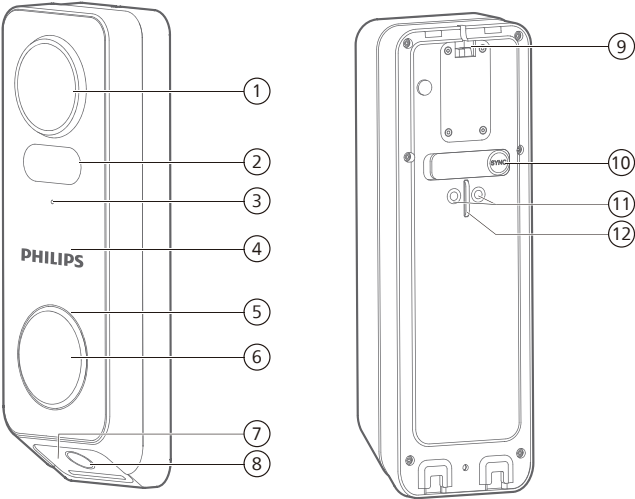


⑪ Quick Start Guide



⑫ Warning Sticker

Video Doorbell Overview



1	2K Camera Lens
2	Motion Sensor
3	Microphone
4	Radar Sensor
5	Indicator
6	Doorbell Button

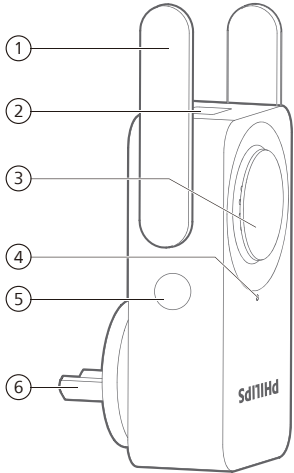
7	Fill Light
8	Camera Lens
9	Detaching Hole
10	Sync Button
11	8-24V AC Power Terminals
12	USB C Charging Port

Video Doorbell

Operation	Status	Halo
Press the Sync Button for 5s	Power on	White light
Press the Sync Button for 5s	Power off	Light dims and goes out
Use a USB power adapter* and the included cable to charge the battery.	Charging	White lightblinks
	Fully Charged	White light

Power
Input Voltage: 8-24VAC, 50/60Hz **Input Current:** 2A **Rated Power:** 16Wor 30W

Wi-Fi Chime Overview



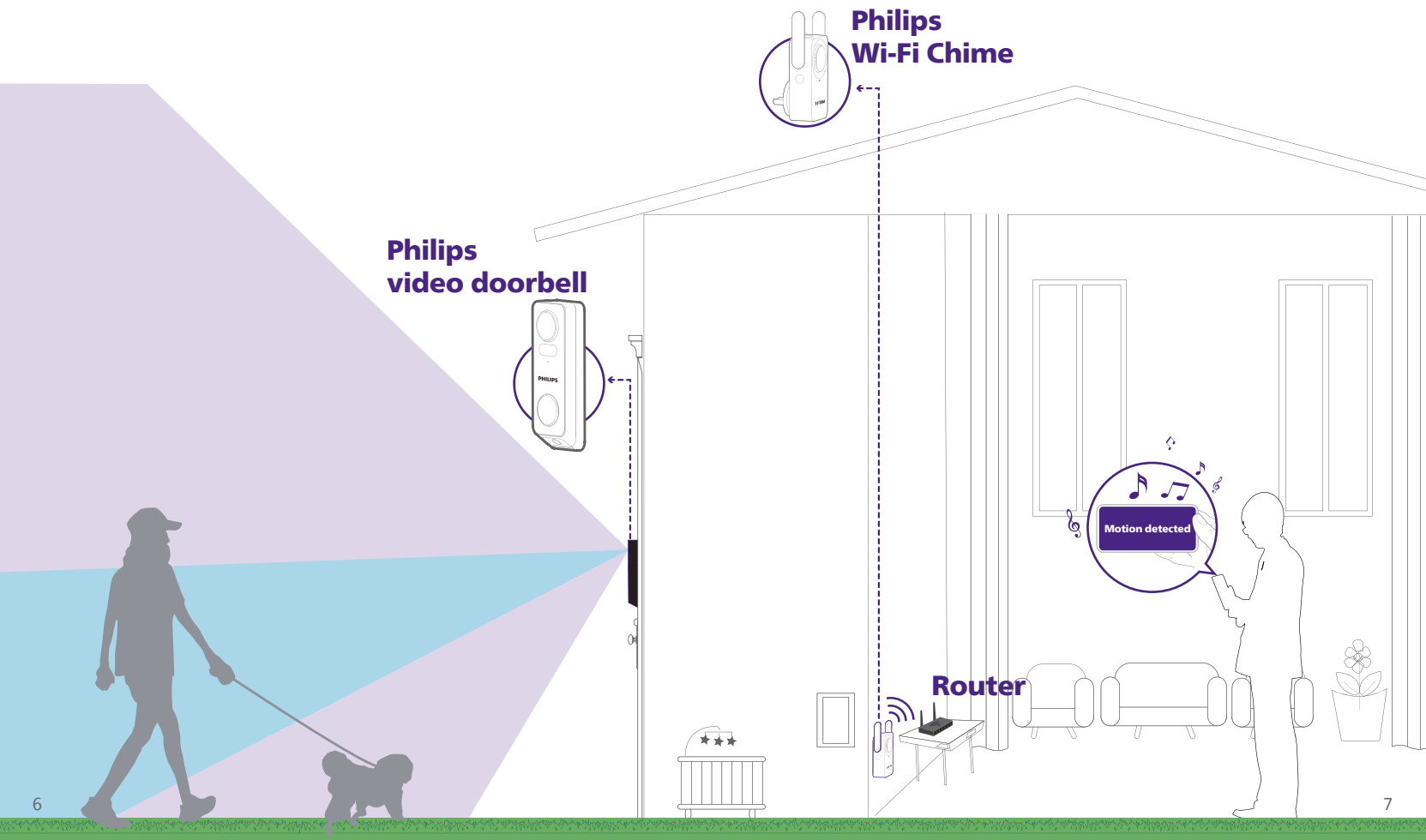
1	Adjustable antennas
2	Ethernet Port
3	Chime Speaker
4	Indicator
5	Sync Button
6	AC 110-240V Plug

Wi-Fi Chime

Operation	Status	Halo
Plug into an outlet	Power on	Green light
Press the Sync Button for 2s	Pairing mode	Green light blinks
Pairing succeeded	Normal working	Blue lights

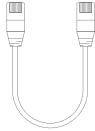
How It Works

In conjunction with Wi-Fi chime, the Philips smart doorbell helps you stay informed in real-time about any activity at your doorstep and enables you to respond as needed.



3 How to Setup

Required Tools



Ethernet Cable

Download the Philips Home Access App



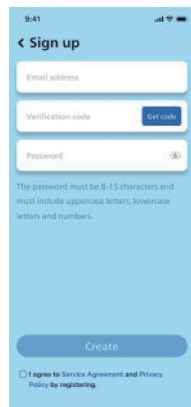
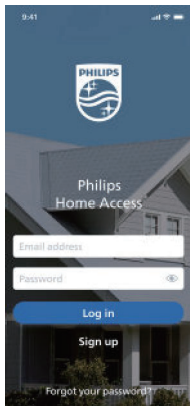
Home Access



Scan the QR code or search "Philips Home Access" to download the Philips Home Access app from the Apple App Store or Google Play Store.

Create a User Account

Register and log in to the Philips Home Access app.



Attention

You have two options to connect the Philips Wi-Fi Chime to your home network:

1. Wired connection with the included Ethernet Cable

With wired connection, you will have a more stable network.

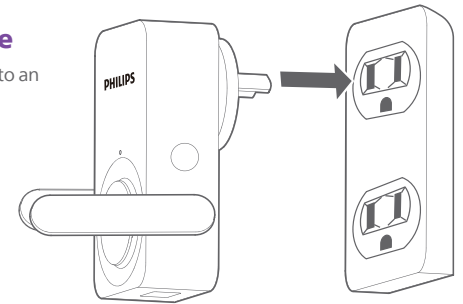
You need to plug the Philips Wi-Fi Chime into a socket near the router or network port

2. Wireless connection

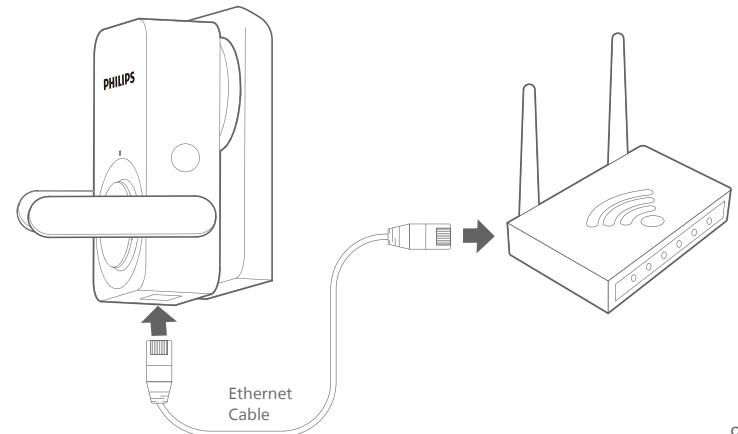
With wireless connection, you can enjoy more flexible installation and choose the best position to suit you needs.

Add the Wi-Fi Chime

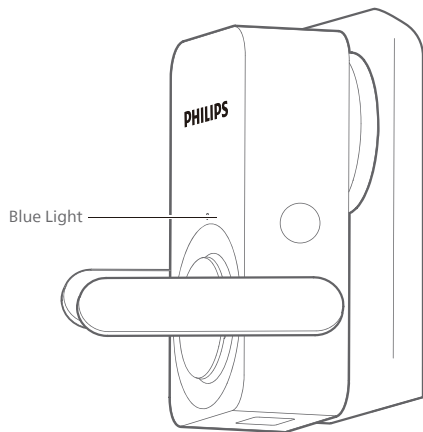
1. Plug the Philips Wi-Fi Chime into an outlet near the router.



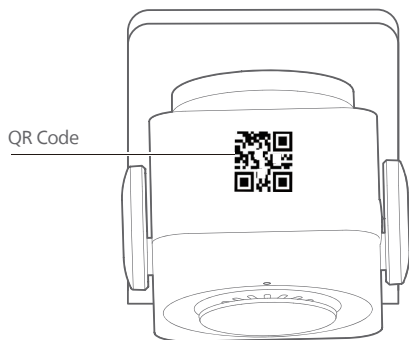
2. **(Optional)** If you choose the wired wayfor connection, connect the Philips Wi-Fi Chime and the router with the provided Ethernet Cable



3. When the Indicator turns blue, tap the "Add device" button on the app.



4. Scan the QR code or manually enter the ESN located on the device's body and complete the pairing steps following the in-app instruction.



4 How to Install

Determine the Power Option

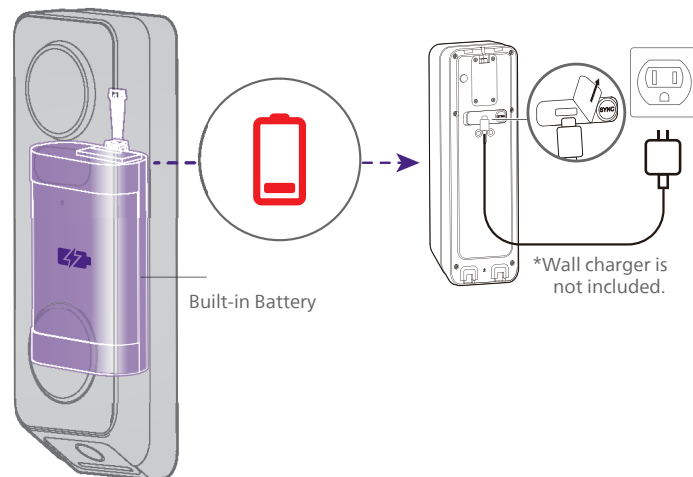
You have two options to power the Philips Video Doorbell:

1. Utilize the built-in battery of the Philips Video Doorbell.
2. Harness the power from the existing doorbell wires in your home.

Choose the option that best suits your needs.

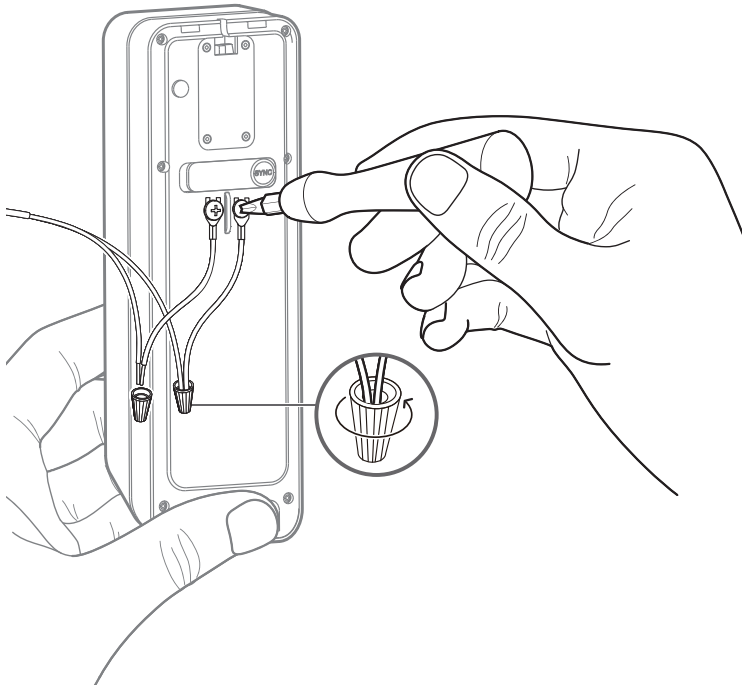
Option 1: Battery Powered

1. If you don't have existing doorbell wiring at the front door, use the built-in battery. You are free to determine the doorbell position and the mounting is easy and quick.
2. When the Video Doorbell is low on battery, you need to detach and recharge it.
3. If you choose this option, please jump to "Battery Powered".



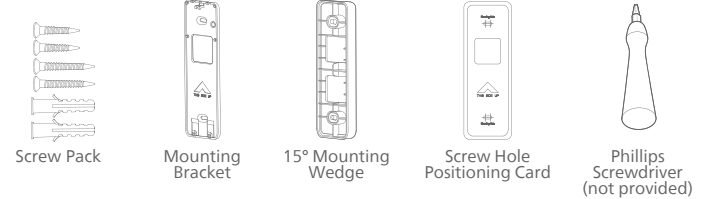
Option 2: Existing wire power supply installation method

1. If you have existing and working doorbell wiring at the front door, the Video Doorbell can be powered by the wires constantly. So you don't need to detach and charge it after installation.
2. Since the Video Doorbell is connected to the wires, the installing position is limited.
3. For specific instructions on how to install, see the app.



Option 1: Battery Powered

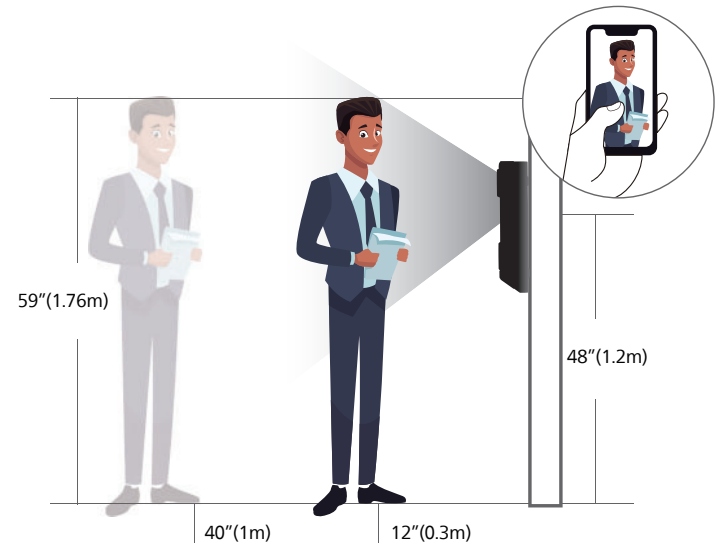
Required Tools



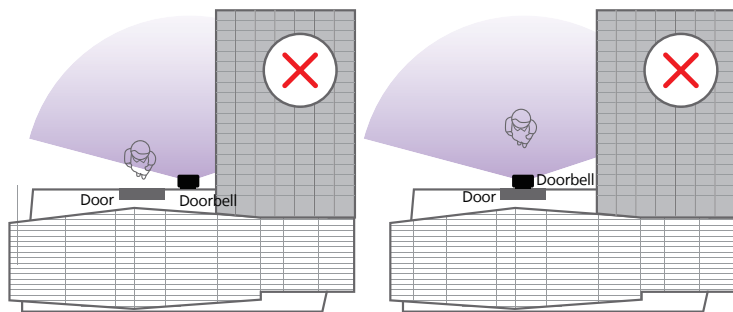
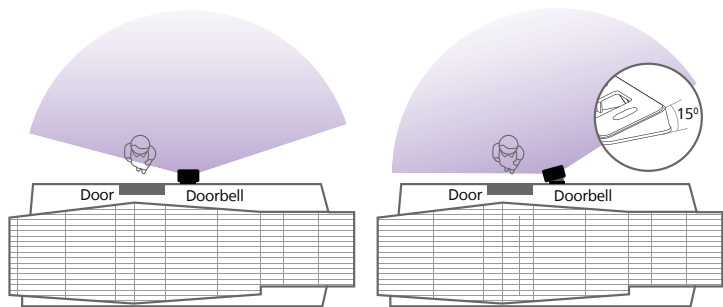
Step 1: Find a Good Installing Position

1. Take the Video Doorbell to your front door. Check the live view on the Philips Home Access app to find the position where you can get the expected field of view.

Recommended mounting height: 48" (1.2m)-55" (1.4m)



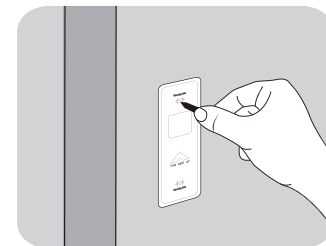
2. if you want to change the camera angle, use the provided 15° Mounting Wedge which can help position the camera to improve the viewing angle and capture the area you'd like to view.



Attention

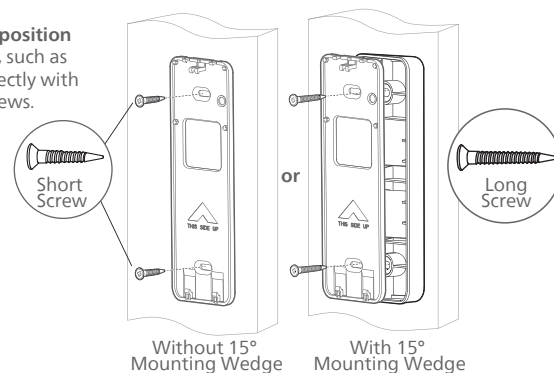
It is NOT recommended to install the Video Doorbell at the corner of the wall to avoid obstruction of the side wall and overexposure of the night vision.
Avoid installing the Video Doorbell on the door.

3. Stick the Screw Hole Positioning Card to the wall to mark the position for the screw holes after you decide on the installing position.

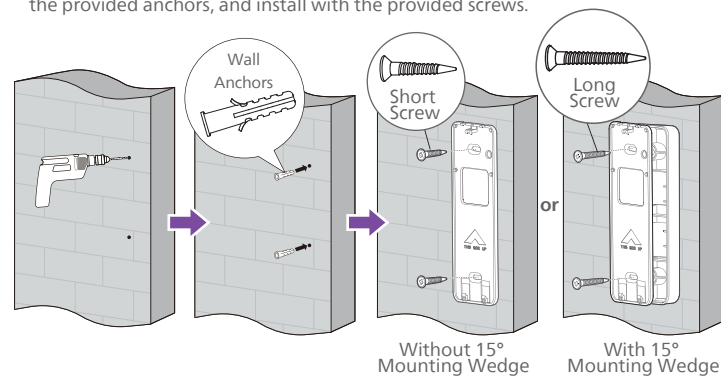


Step 2: Install the mounting bracket

1. If the installing position is a **soft surface**, such as wood, install directly with the provided screws.

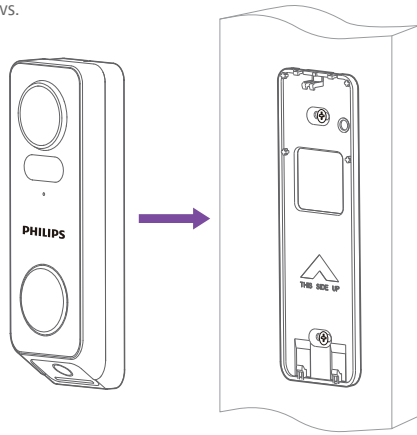


2. If the installing position is a **hard surface**, such as stucco, brick, or concrete, drill two screw holes according to the Screw Hole Positioning Card, then drive into the provided anchors, and install with the provided screws.

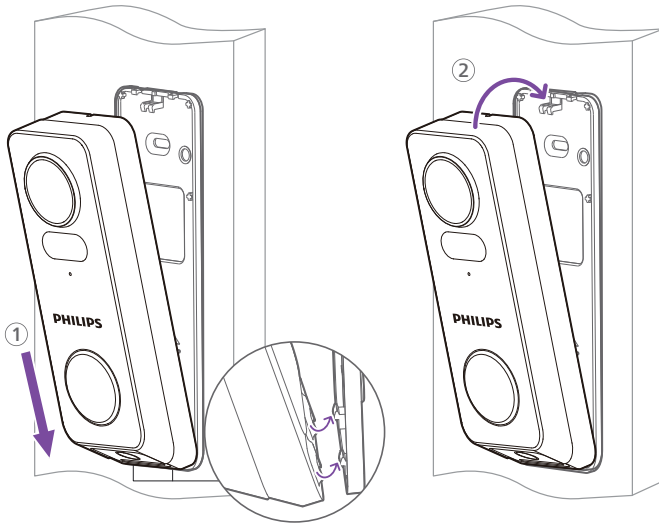


Step 3: Attach the Video Doorbell

1. If the installing position is a soft surface, such as wood, install directly with the provided screws.

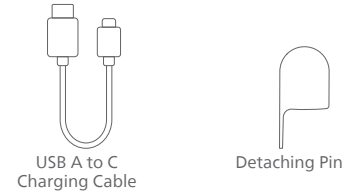


2. Align the bottom of the Video Doorbell and the Mounting Bracket, then snap the top until you feel it click into place.
3. Test the Video Doorbell to make sure it is securely mounted.



Recharge the Battery

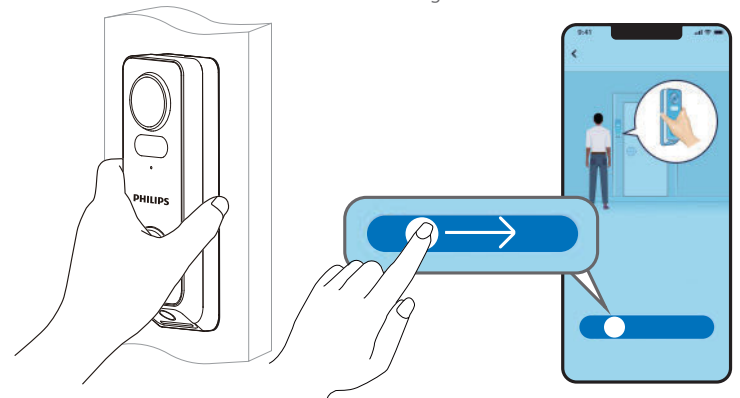
Required Tools



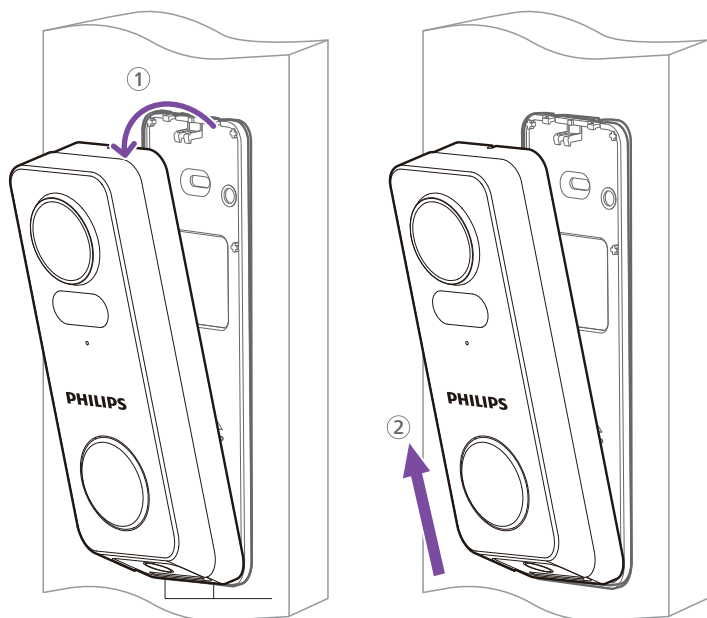
Detach the Video Doorbell

1: Detach the Video Doorbell with the Philips Home Access app

1. Hold the Video Doorbell, then tap the "One-Tap Detaching" in the Settings via the Philips Home Access app.
2. After following the in-app instructions of "One-Tap Detaching", the Video Doorbell will auto-detach from the Mounting Bracket.

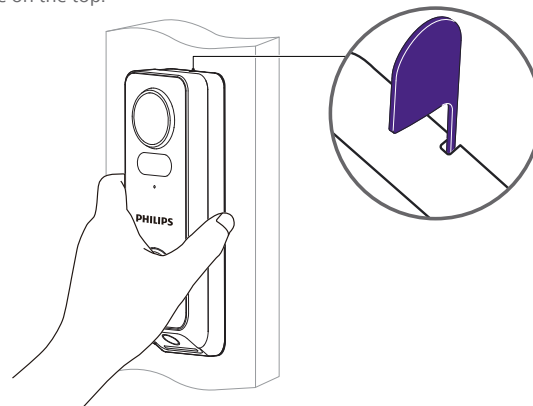


3. Pull the top of the Video Doorbell away from the Mounting Bracket, and lift it for removal.

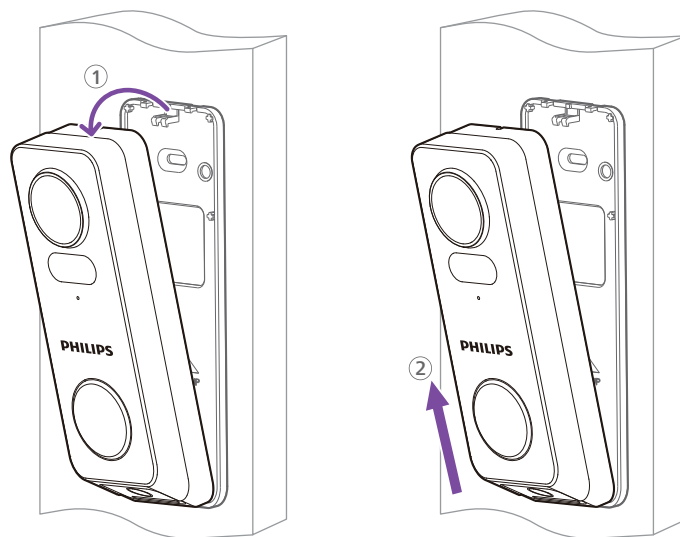


2: Detach the Video Doorbell with the Detaching Pin

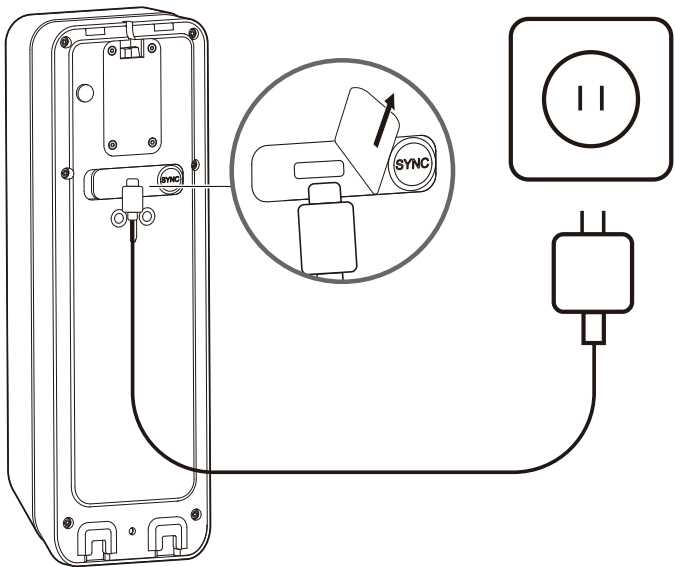
1. Hold the Video Doorbell, then press the Detaching Pin into the Detaching Hole on the top.



2. Pull the top of the Video Doorbell away from the Mounting Bracket, and lift it for removal.



Recharge the Built-in Battery



Supports PD 2.0 Fast Charging up to 5V 3A, 12.6W

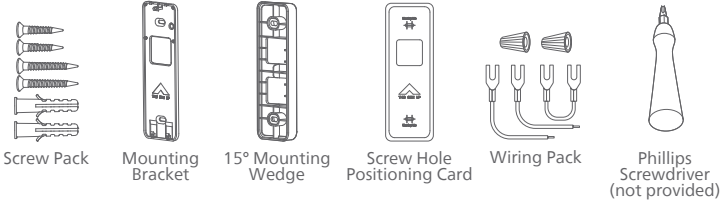
Status	Indicator
Charging	White light blinks
Fully Charged	White light

Option 2: Existing Wires Powered

⚠ Attention

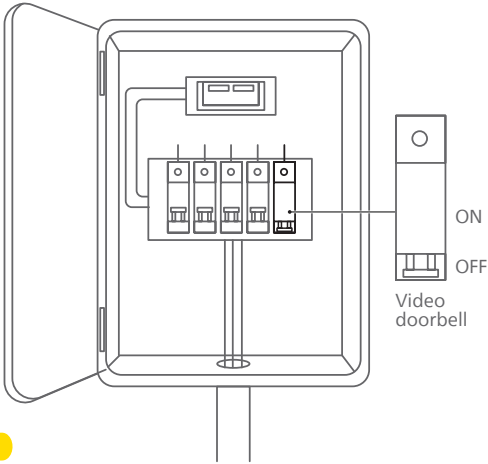
If you choose to power your Video Doorbell with existing wires, the installing position will be limited by the length of the existing wires.

Required Tools



Step 1: Check the Doorbell Wiring

1. Ring the existing doorbell to check if it is working. If the doorbell doesn't ring, your doorbell wires may be defective. Power the doorbell on its own battery or consult an electrician to fix the wires.
2. Ensure the power supply is 8-24V AC. The Video Doorbell can be powered by 8-24V AC only.
3. Shut off the power at the breaker. Turn the lights on/off to ensure the electricity in your home is properly shut off.

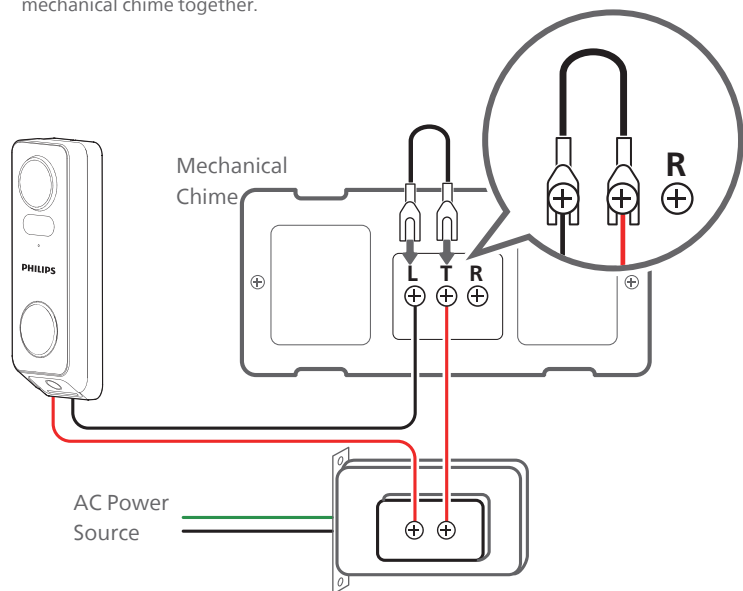


⚠ Attention

Always be carefully when handling wires. If you are not comfortable installing it yourself, have a qualified electrician do it.

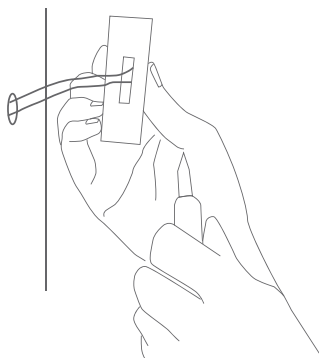
Step 2: Connect the Mechanical Chime

Use the provided wire with dual terminals to connect the two terminals of the mechanical chime together.



Step 3: Detach the Existing Doorbell Button

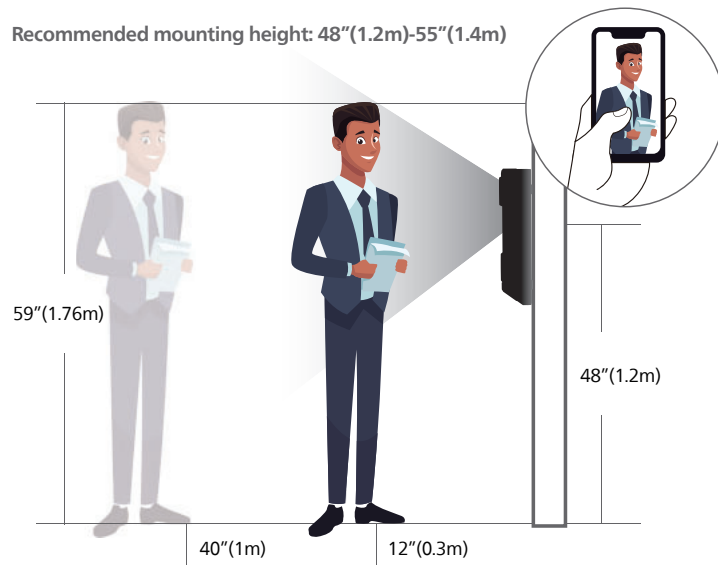
1. Remove the existing doorbell with a Phillips screwdriver (not provided).
2. Pull the two wires out carefully when removing the existing doorbell. Straighten the wire ends if necessary.



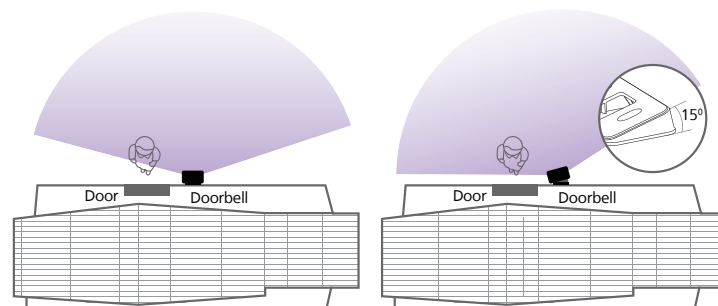
Step 4: Find a Good Installing Position

1. Check if you can reuse the existing holes and anchors on the wall or door frame.
2. If you are drilling the mounting holes for the first time, the recommended mounting height is 48" (1.2m) - 55" (1.4m) from the ground.

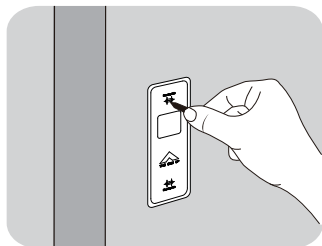
Recommended mounting height: 48" (1.2m) - 55" (1.4m)



3. If you want to change the camera angle, use the provided 15° Mounting Wedge which can help position the camera to improve the viewing angle and capture the area you'd like to view.

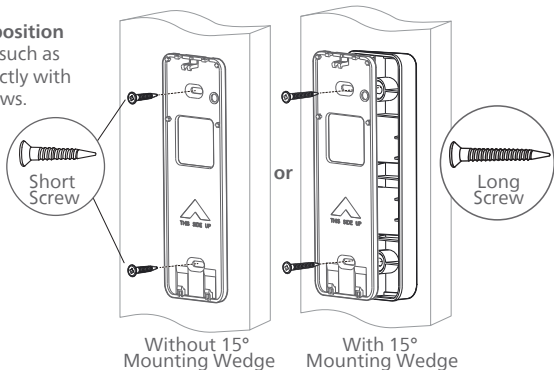


4. Stick the Screw Hole Positioning Card to the wall to mark the position for the screw holes after you decide on the installing position.

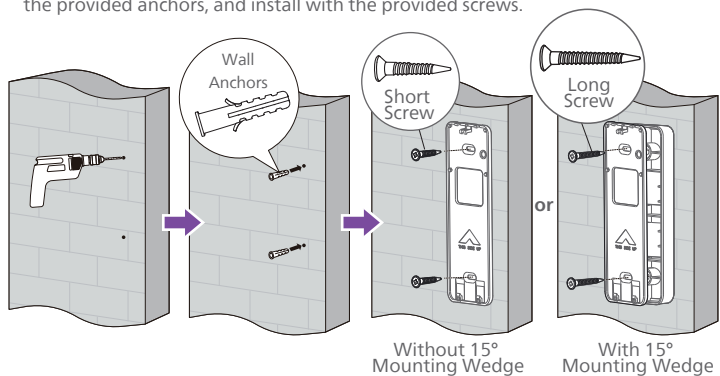


Step 5: Install the mounting bracket

1. If the installing position is a **soft surface**, such as wood, install directly with the provided screws.

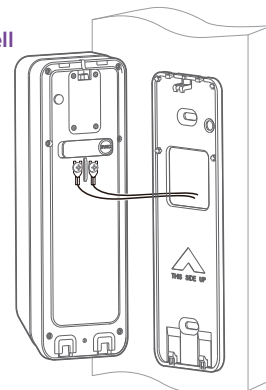


2. If the installing position is a **hard surface**, such as stucco, brick, or concrete, drill two screw holes according to the Screw Hole Positioning Card, then drive into the provided anchors, and install with the provided screws.

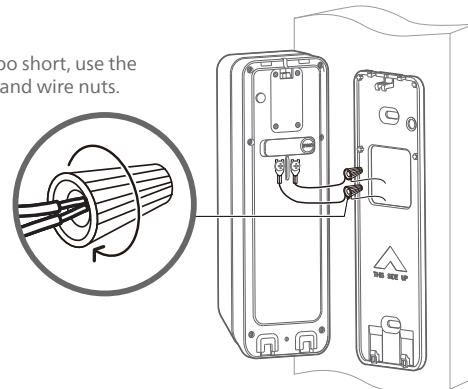


Step 6: Connect the Wires to the Video Doorbell

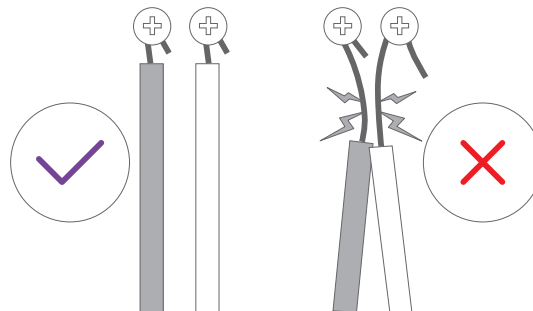
1. Connect the wires to the Power Terminals at the back of the doorbell, then tighten the terminal screws. Wire can connect to either terminal as the electric current is alternating current.



2. If the doorbell wires are too short, use the provided extension wires and wire nuts.



3. Ensure the doorbell wires are not shorted. To prevent short-circuiting, make sure the wires are not touching each other after connecting them to the terminals.

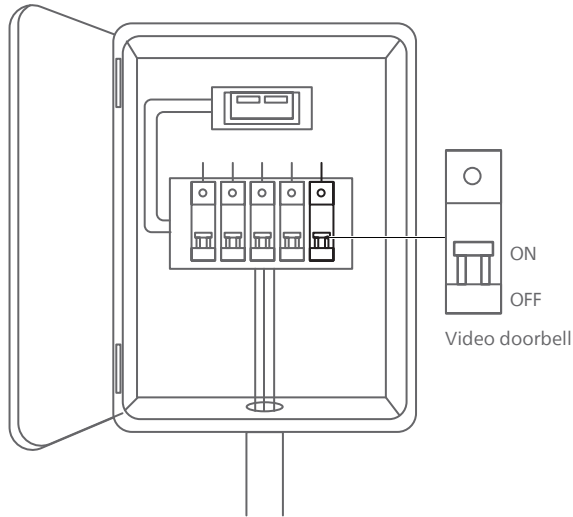


Step 7: Attach the Video Doorbell

Align the bottom of the Video Doorbell and the Mounting Bracket, then snap the top until you feel it click into place.

Step 8: Restore Power

Switch the master circuit breaker back to ON.



Step 9: Check on the App

Check the Philips Home Access app to ensure there is "AC Powered" above the Philips Video Doorbell on the home page.

5 Feature instructions

Motion Dedection

After enabling this feature, the Philips smart doorbell will automatically detect activity in your entryway and notify you accordingly. The detection range and intensity can be customized as needed.

Battery Management

If you power your Philips smart doorbell with the built-in battery, you can check the real-time battery status through the Philips Home Access app. You will receive instant notifications when the battery is low, ensuring that you can promptly recharge the built-in battery.

Real-Time Notifications

Receive alerts when activity occurs at your front door, including someone at the door, package arrivals, and suspicious activity. This feature is disabled by default.

Tool-Free Detachment

Through the Philips Home Access app, remove the doorbell from its mount without needing tools. Simple maintenance and adjustments ensure a quick and hassle-free detachment for your convenience.

Warranty

1 Year Warranty

For more information on the warranty applicable for this product, please visit www.philips.com or contact the dealer where you purchased the product.

**Still have questions or need help?
Please feel free to contact us:**



U.S.A. & Canada: +1(833)599-9111

FCC Statement

This equipment has been tested and found to comply with the limits for a Class B digital device, pursuant to part 15 of the FCC Rules. These limits are designed to provide reasonable protection against harmful interference in a residential installation. This equipment generates, uses and can radiate radio frequency energy and, if not installed and used in accordance with the instructions, may cause harmful interference to radio communications. However, there is no guarantee that interference will not occur in a particular installation. If this equipment does cause harmful interference to radio or television reception, which can be determined by turning the equipment off and on, the user is encouraged to try to correct the interference by one or more of the following measures:

- Reorient or relocate the receiving antenna.
- Increase the separation between the equipment and receiver.
- Connect the equipment into an outlet on a circuit different from that to which the receiver is connected.
- Consult the dealer or an experienced radio/TV technician for help.

Caution: Any changes or modifications to this device not explicitly approved by manufacturer could void your authority to operate this equipment.

This device complies with part 15 of the FCC Rules. Operation is subject to the following two conditions: (1) This device may not cause harmful interference, and (2) this device must accept any interference received, including interference that may cause undesired operation.

RF Exposure Information

This equipment complies with FCC radiation exposure limits set forth for an uncontrolled environment. This equipment should be installed and operated with minimum distance 20cm between the radiator and your body.

ISED Statement

English: This device contains licence-exempt transmitter(s)/receiver(s) that comply with Innovation, Science and Economic Development Canada's licence-exempt RSS(s). Operation is subject to the following two conditions:

- (1) This device may not cause interference.
- (2) This device must accept any interference, including interference that may cause undesired operation of the device.

The digital apparatus complies with Canadian CAN ICES-3 (B)/NMB-3(B).

French: Cet appareil contient des émetteurs / récepteurs exemptés de licence conformes aux RSS d'Innovation, Sciences et Développement économique Canada.

L'exploitation est autorisée aux deux conditions suivantes:

- (1) Cet appareil ne doit pas produire de brouillages.
- (2) Cet appareil doit accepter tout brouillage, même si le brouillage est susceptible d'en compromettre le fonctionnement.

L'appareil numérique est conforme à la norme canadienne CAN ICES-3(B)/NMB-3(B).

This device meets the exemption from the routine evaluation limits in section 2.5 of RSS 102 and compliance with RSS 102 RF exposure, users can obtain Canadian information on RF exposure and compliance.

Cet appareil est conforme avec l'exemption d'évaluation de routine des limitations de la section 2.5 du CNR-102 et le CNR-102 sur l'exposition aux RF et les utilisateurs peuvent obtenir l'information canadienne sur l'exposition aux RF et la conformité.

This equipment complies with Canada radiation exposure limits set forth for an uncontrolled environment.

Cet équipement est conforme aux limites de radiation du Canada établies pour un environnement non contrôlé.

This equipment should be installed and operated with minimum distance 20cm between the radiator & your body.

Cet équipement doit être installé et utilisé à une distance minimale de 20 cm entre le radiateur et votre corps.



Philips and the Philips Shield Emblem are registered trademarks of Koninklijke Philips N.V. and are used under license. This product has been manufactured by and is sold under the responsibility of Shenzhen Conex Intelligent Technology Co., Ltd. and Shenzhen Conex Intelligent Technology Co., Ltd. is the warrantor concerning this product.