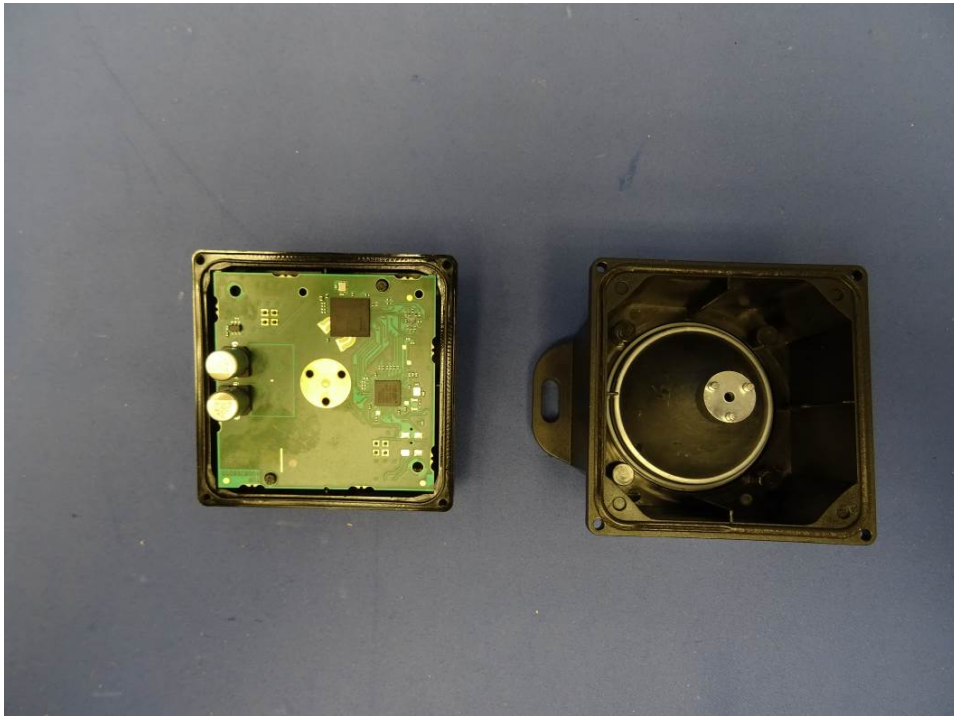
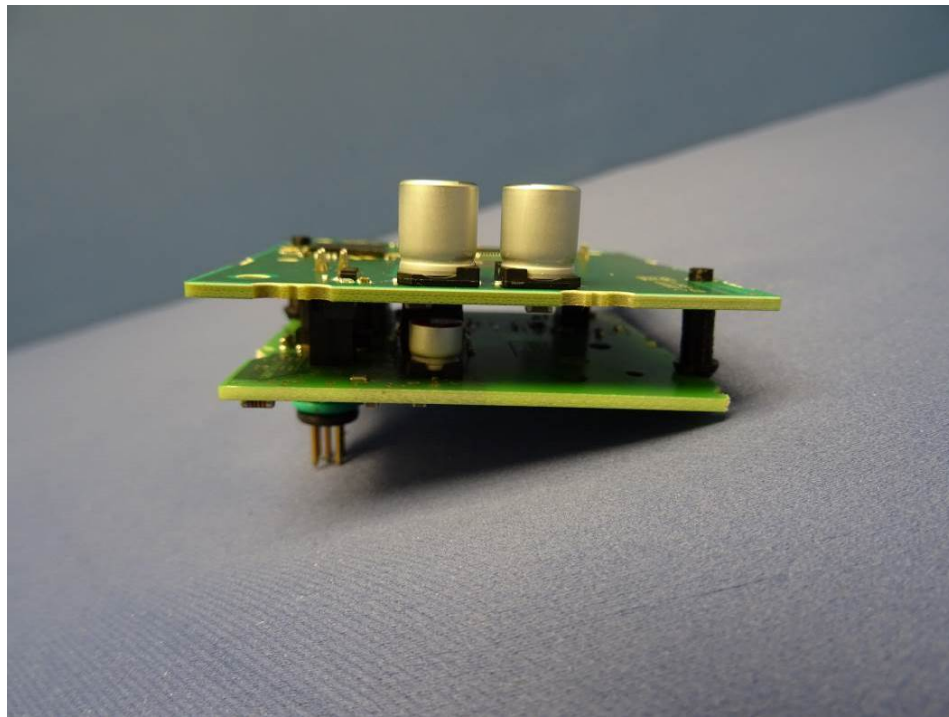


Attachment to test report IEC 61010-1: Photos

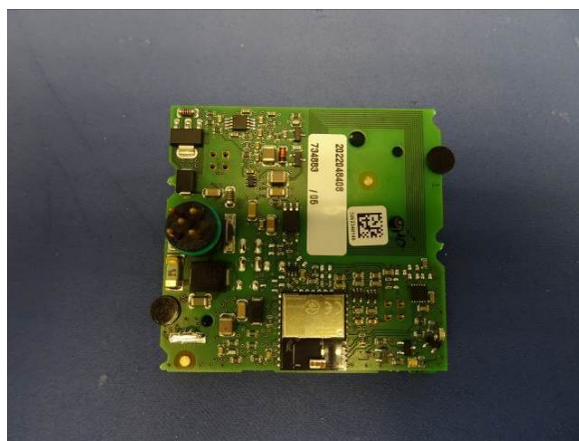


Internal view of Sensor.

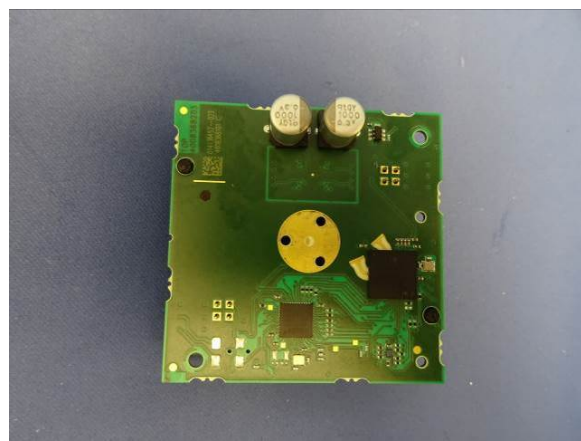


Side view of the two internal PCB

Attachment to test report IEC 61010-1: Photos



Top view of internal PCB



Bottom view of internal PCB

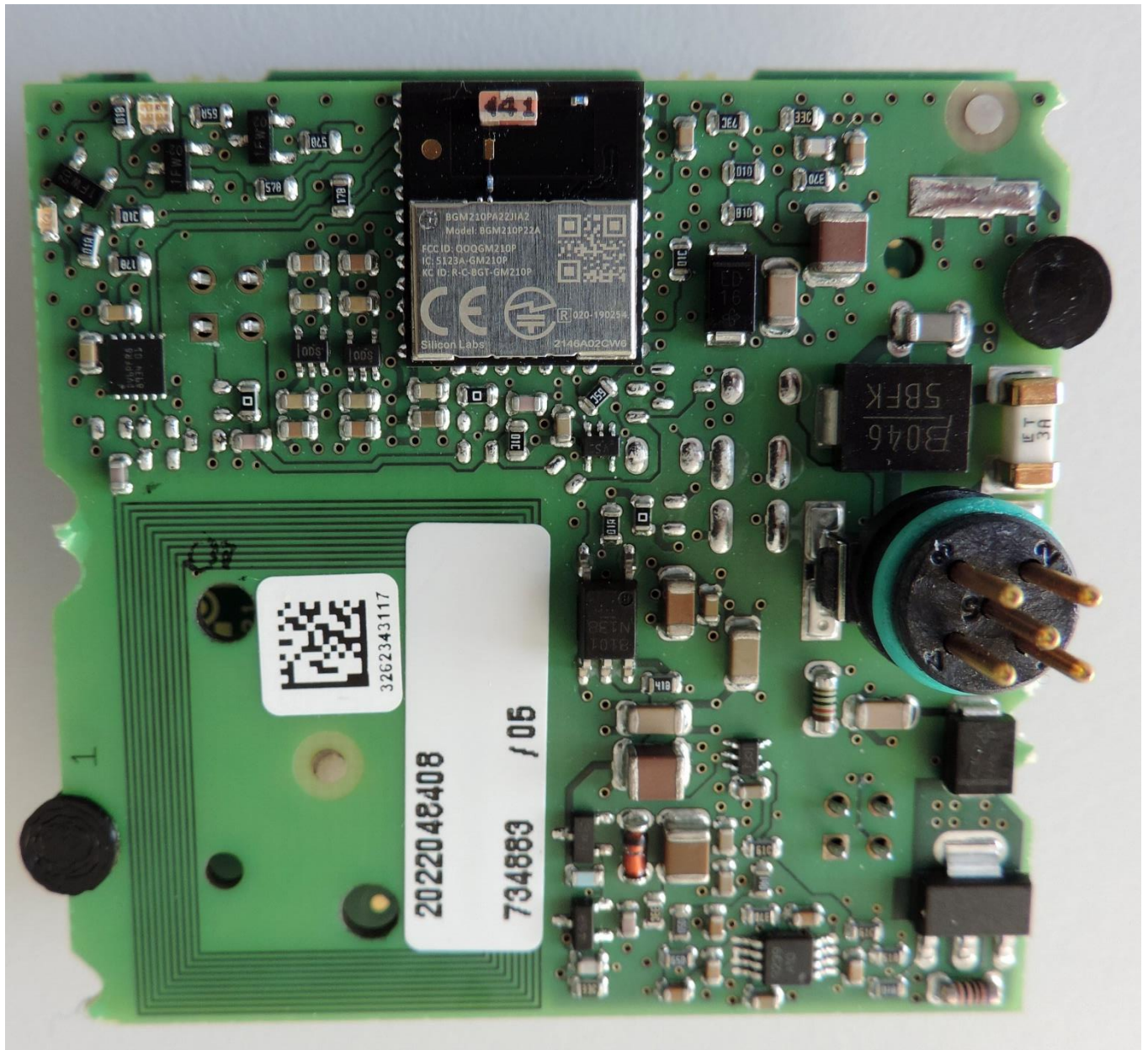


Side view input Jack



Bottom view Input Jack

Related equipment placement and details



Bluetooth Low Energy and ZigBee wireless radio module

Model (HVIN): BGM210P22A

FCC ID: QOQGM210P

IC: 5123A-GM210P