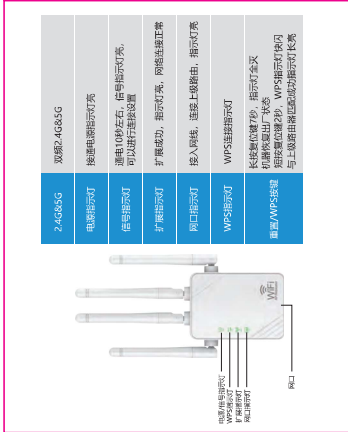
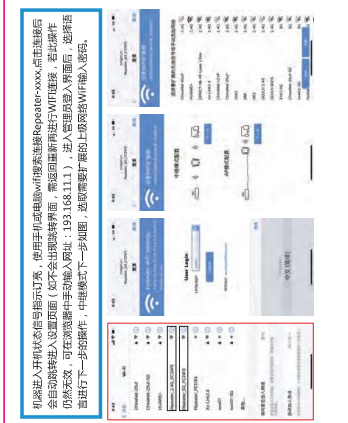
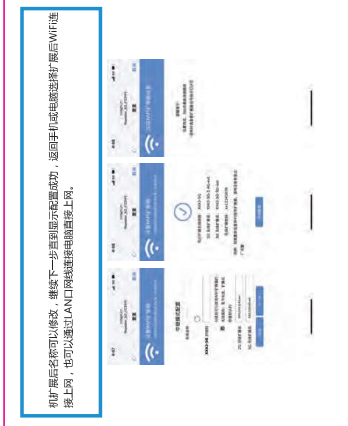
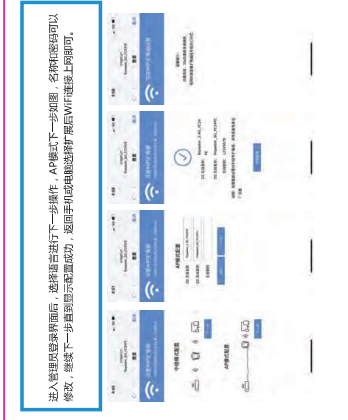


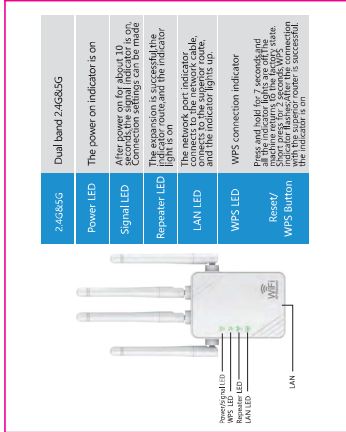
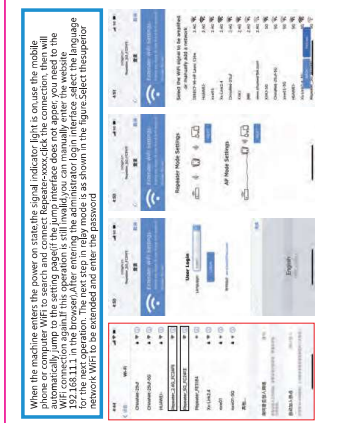
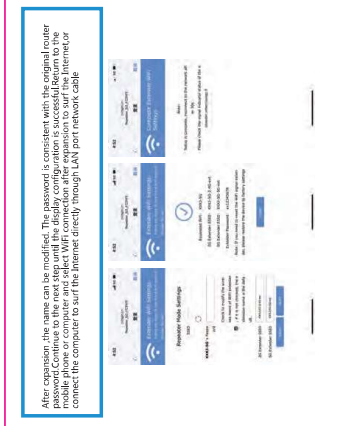
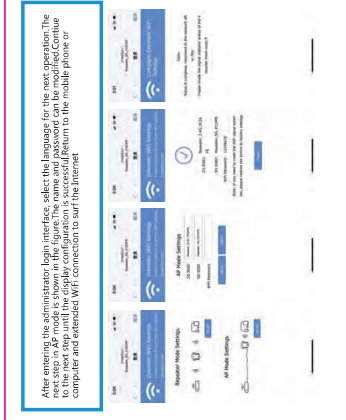
2.4G85G	双频2.4G/5G
电源指示灯	接通电源即指示点亮
信号指示灯	通电10秒左右, 信号指示灯亮, 可以进行无线设置
扩展指示灯	扩展成功, 指示灯亮, 网络恢复正常
端口指示灯	接入网线, 连接上数据由, 指示灯亮
WPS指示灯	WPS连接指示灯
重置/WPS按钮	长按按钮约5秒, 指示灯全灭 短按按钮约2秒, WPS指示灯闪烁 与上按钮相连的指示灯长亮

上图分别为电源, 电源指示灯亮



2.4G85G	Dual band 2.4G/5G
Power LED	The power on indicator is on
Signal LED	After power on for about 10 seconds, the connection settings can be made
Repeater LED	The expansion is successful if the network port indicator, WPS connection indicator, and the indicator lights up.
LAN LED	The network port indicator, WPS connection indicator, and the indicator lights up.
WPS LED	WPS connection indicator
Reset/WPS button	All the indicator lights are off. Short press for 2 seconds WPS state with the superior button is successful. The indicator is on

The picture above shows the operation



This device complies with part 15 of the FCC Rules. Operation is subject to the following two conditions: (1) This device may not cause harmful interference, and (2) this device must accept any interference received, including interference that may cause undesired operation.

Any Changes or modifications not expressly approved by the party responsible for compliance could void the user's authority to operate the equipment.

**Note:** This equipment has been tested and found to comply with the limits for a Class B digital device, pursuant to part 15 of the FCC Rules. These limits are designed to provide reasonable protection against harmful interference in a residential installation. This equipment generates uses and can radiate radio frequency energy and, if not installed and used in accordance with the instructions, may cause harmful interference to radio communications. However, there is no guarantee that interference will not occur in a particular installation. If this equipment does cause harmful interference to radio or television reception, which can be determined by turning the equipment off and on, the user is encouraged to try to correct the interference by one or more of the following measures:

- Reorient or relocate the receiving antenna.
- Increase the separation between the equipment and receiver.
- Connect the equipment into an outlet on a circuit different from that to which the receiver is connected.
- Consult the dealer or an experienced radio/TV technician for help.

This equipment complies with FCC radiation exposure limits set forth for an uncontrolled environment. This equipment should be installed and operated with minimum distance 20cm between the radiator & your body.