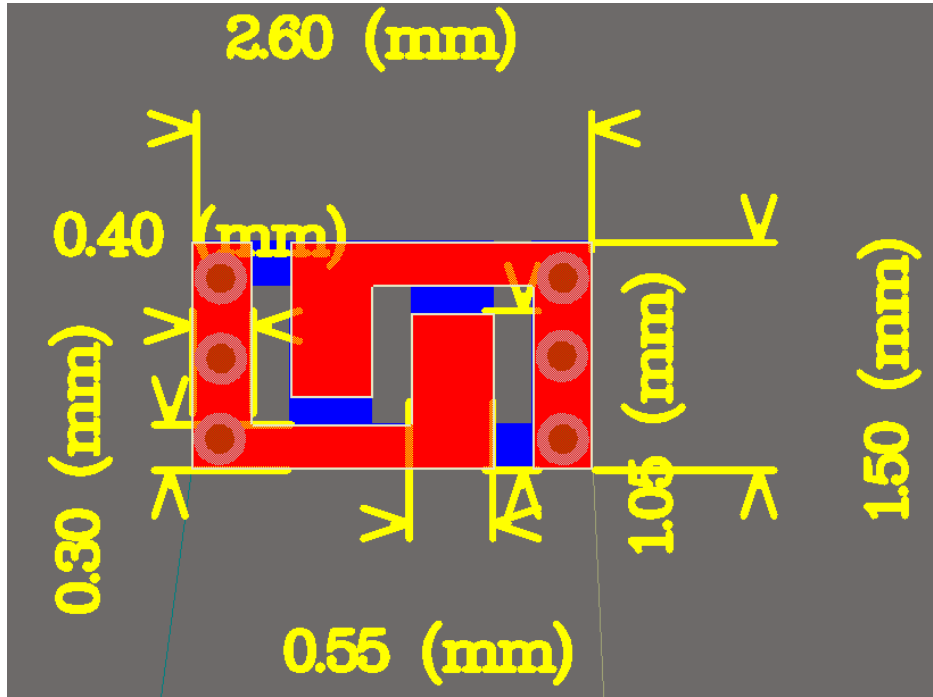


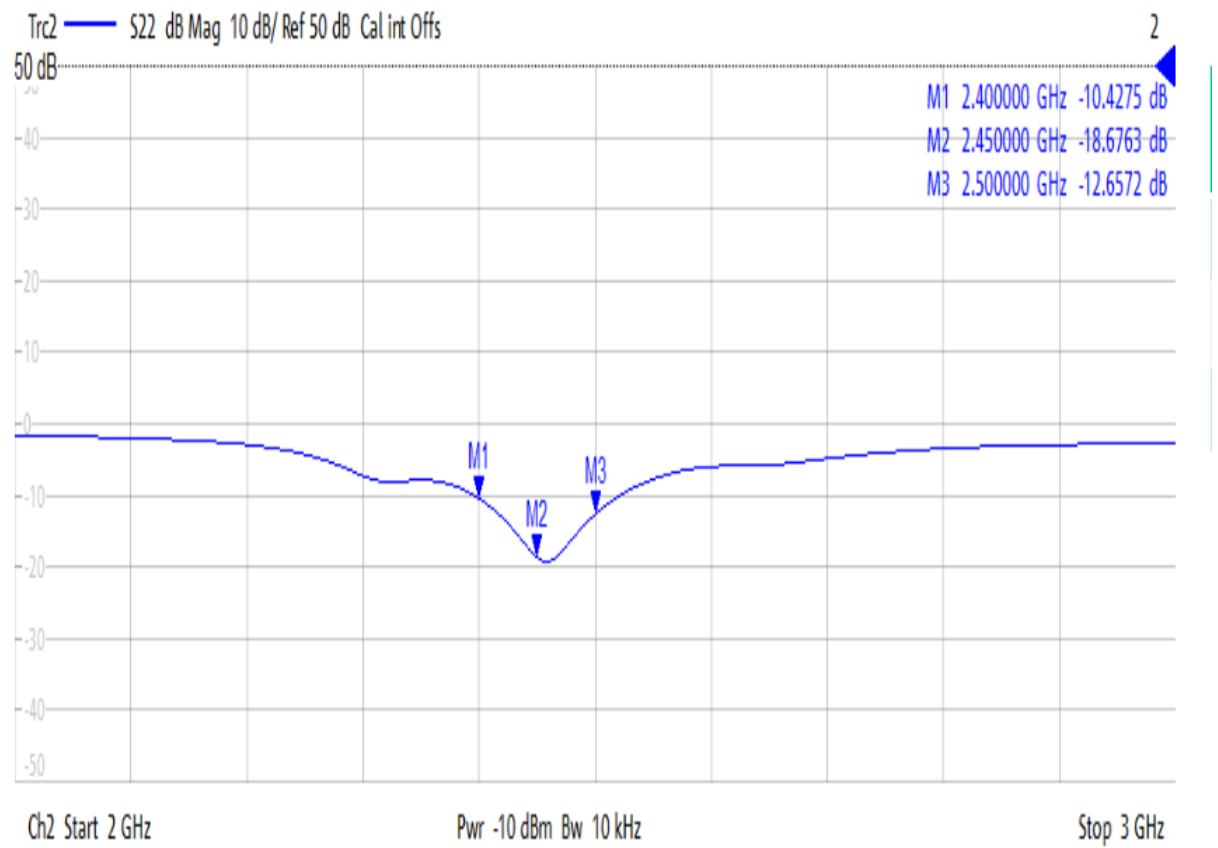
— RFPCB



COMPANY	Shenzhen STEPU Technology Co., Ltd.
DESCRIPTION	PCB Antenna-ONboard
OUR MODEL NO	ST003
Dimension (mm)L*W*T	2.6*1.5*0.8

Central Frequency	2450	MHz
Bandwidth	120 (Min.)	MHz
Peak Gain	-1.2	dBi
Impedance	50	Ohm
Operating Temperature	-40~+85	°C

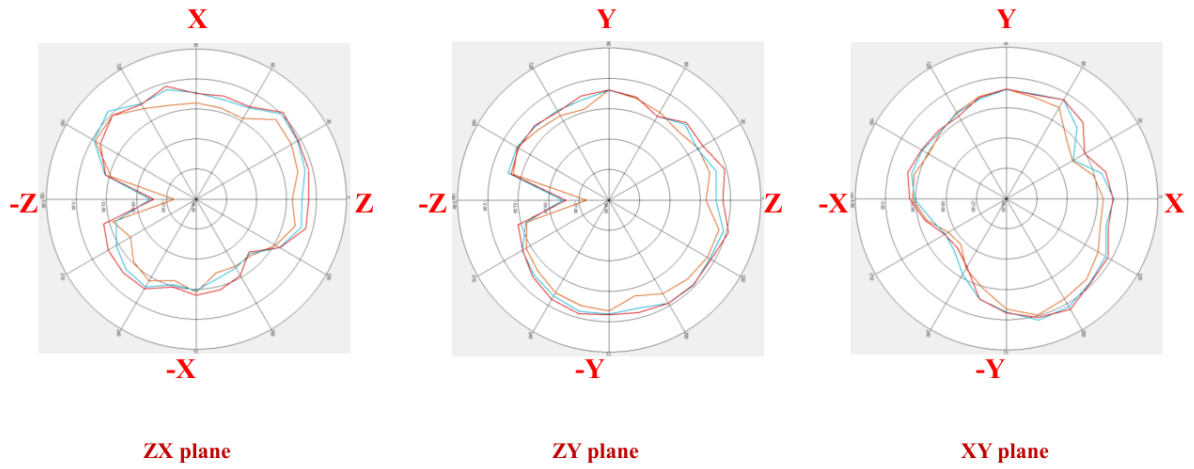
Return Loss



三. 2D Radiation Patterns

— 2400MHz
— 2450MHz
— 2500MHz

廣睿品質學
NATIONAL QUALITY AWARD



Frequency [MHz]	XZ-Plane		YZ-Plane		XY-Plane	
	Max. Value (dB _i)	Ave. Value (dB _i)	Max. Value (dB _i)	Ave. Value (dB _i)	Max. Value (dB _i)	Ave. Value (dB _i)
2400 MHz	-3.3	-9.21	-5.95	-9.87	-3.11	-9.52
2450 MHz	-1.79	-6.72	-5.68	-8.42	-1.77	-8.19
2500 MHz	-2.17	-6.63	-3.32	-8.02	-1.2	-7.83