

台灣永誠科技股份有限公司
CCL Electronic Co., Ltd.

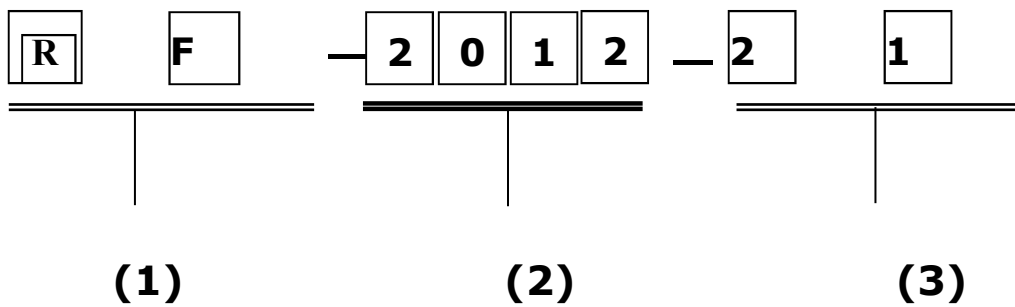
1. FEATURES:

- Light weight, compact
- Wide bandwidth, low cost
- Built-in antenna with high gain

2. APPLICATIONS:

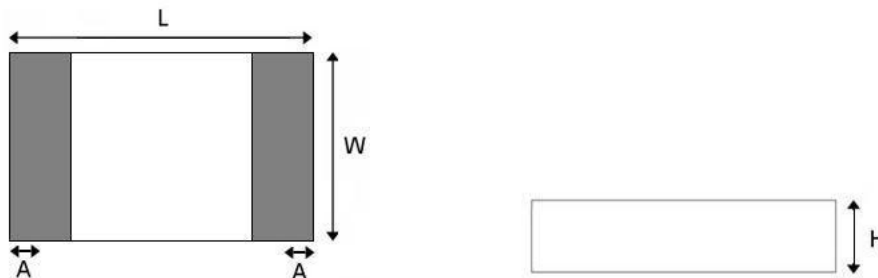
- Bluetooth, Wireless LAN, Mobile TV
- Home RF system, etc

3. PRODUCT IDENTIFICATION



- (1) Product type: Chip Antenna
(2) Center Frequency: 2450MHz
(3) 21 : External Dimensions (L×W) (mm):2.0*1.2
31 : External Dimensions (L×W) (mm):3.1*1.6

4. SHAPE AND DIMENSIONS:



SHAPE AND DIMENSIONS

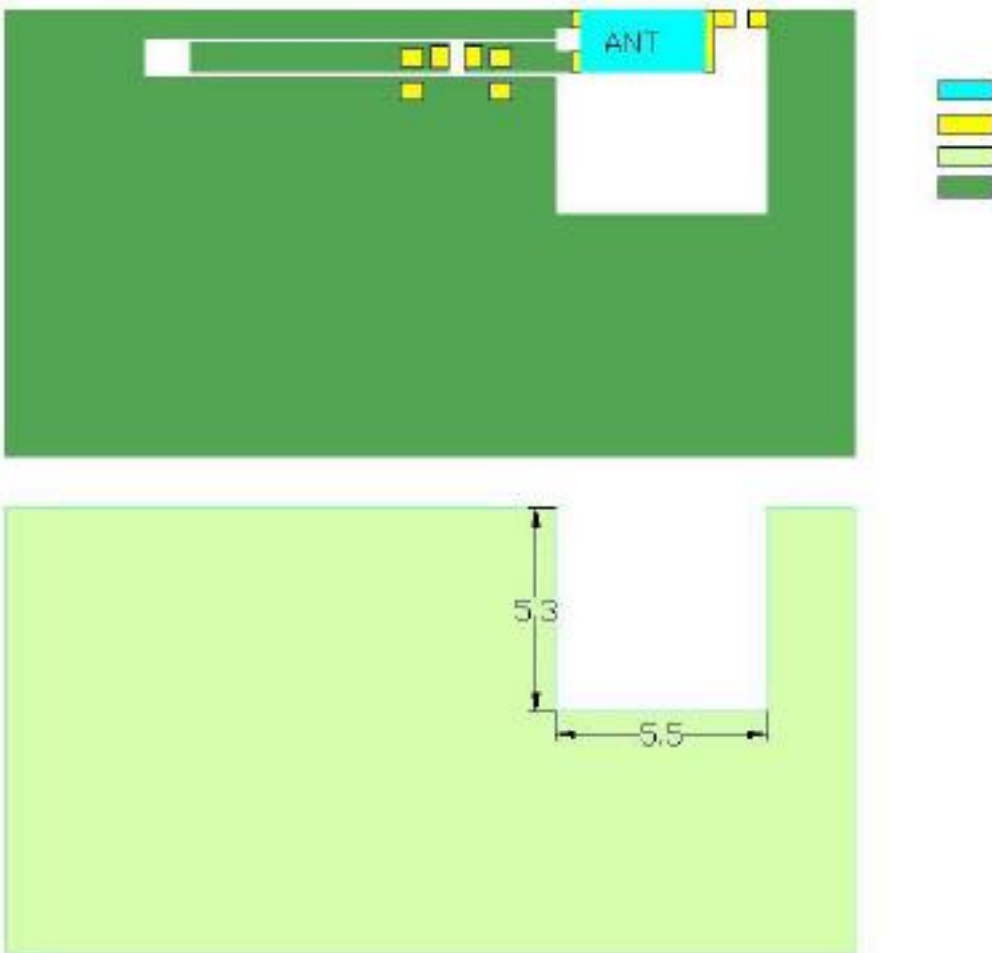
台灣永誠科技股份有限公司

CCL Electronic Co., Ltd.

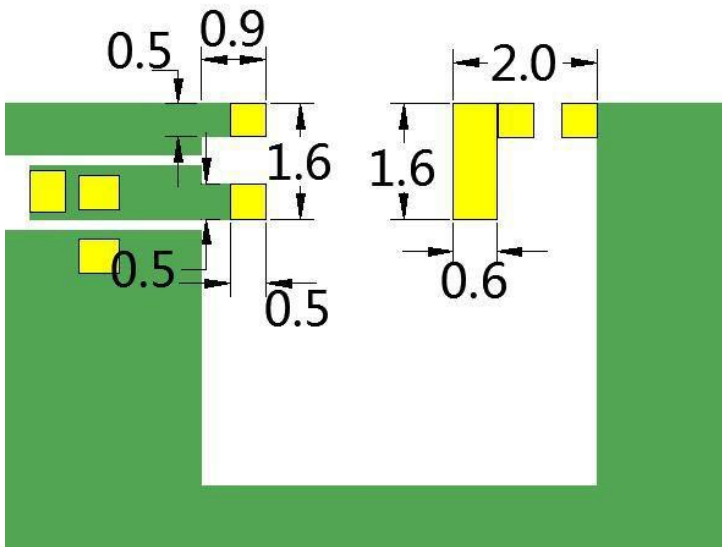
Style	L	W	C	d	t
2012	2.00±0.10	1.2±0.10	0.40±0.20	0.40±0.20	0.50±0.10
3216	3.10±0.10	1.55±0.10	0.50±0.30	0.40±0.20	0.50±0.10

测试板参考尺寸:

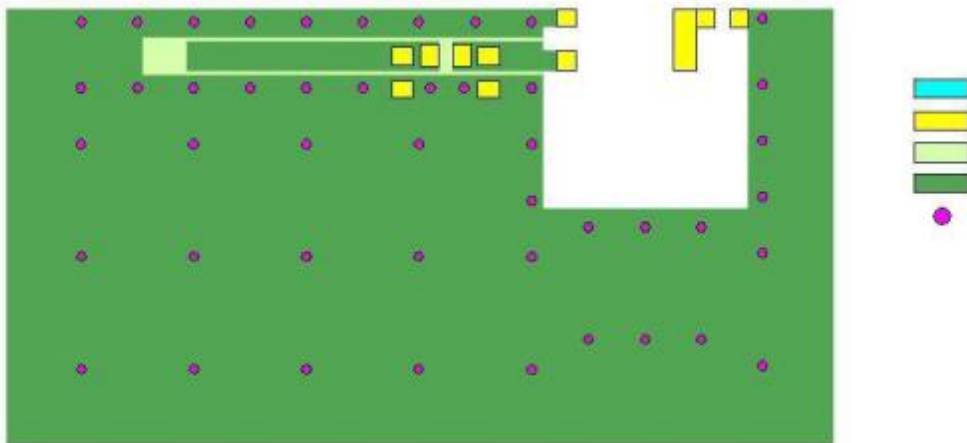
单位: **mm**



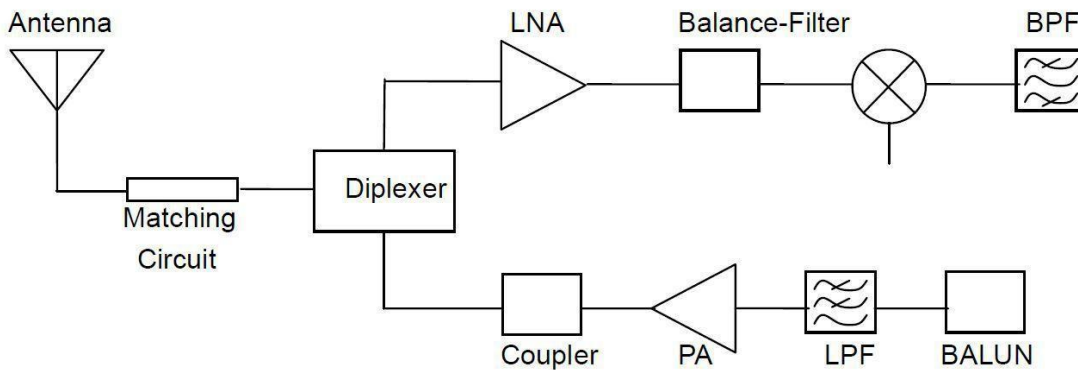
台灣永誠科技股份有限公司
CCL Electronic Co., Ltd.



Punching reference diagram



台灣永誠科技股份有限公司
CCL Electronic Co., Ltd.



(5) SPECIFICATIONS:

测试项 test item	规格 specification
带宽 bandwidth	2400~2483MHz
极化方式 Polarization mode	线极化 Linear polarization
*最大增益 maximum gain	2.67dBi
*效率 efficiency	72.30%
输入阻抗 input impedance	50 Ω

* Test condition: Test board size 90*40 mm

Matching circuit: Pi matching circuit will be required

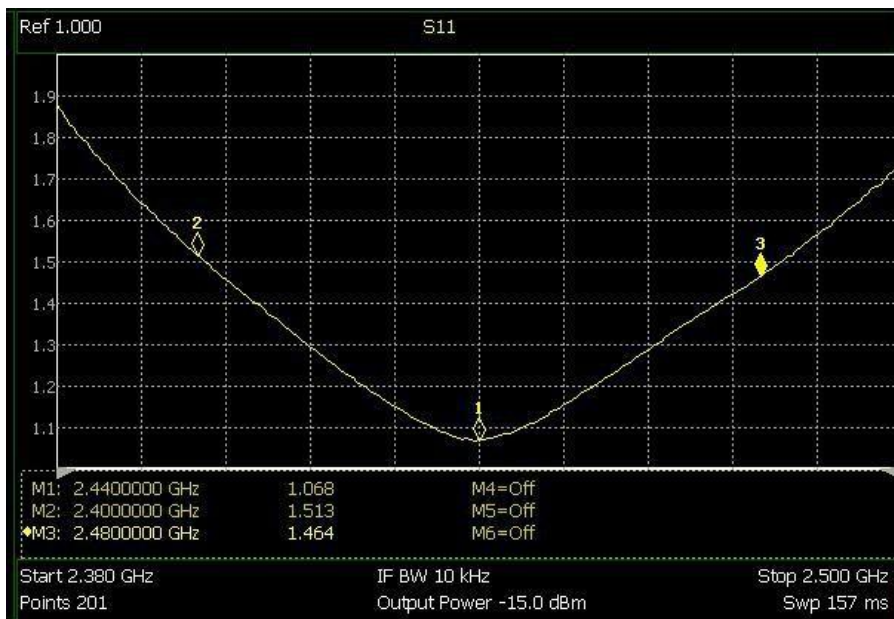
(6) Electrical Characteristics :

RL (return loss)

台灣永誠科技股份有限公司
CCL Electronic Co., Ltd.



standing-wave ratio (SWR)

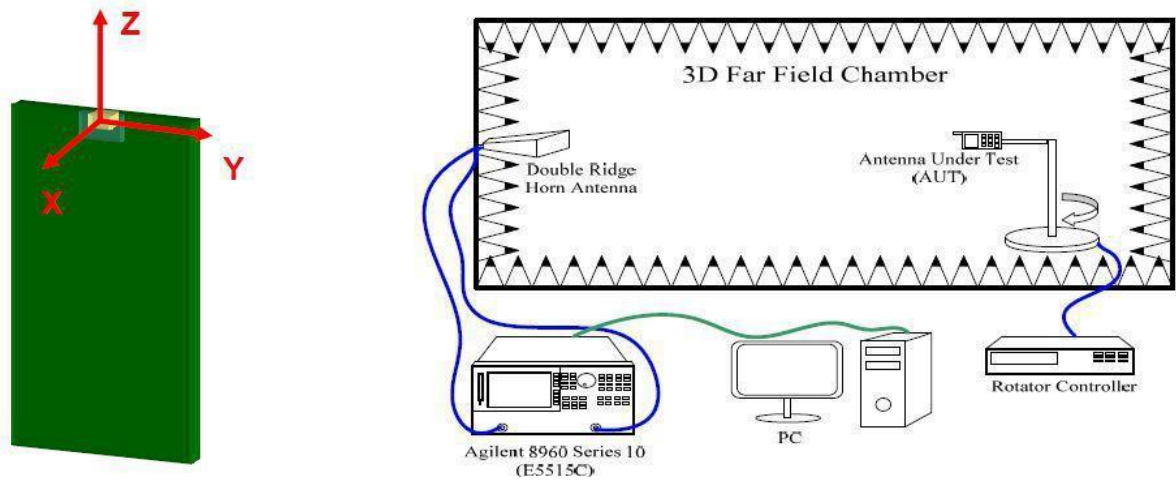


Mark	Frequency	VSWR
1	24 MHz	1.5
2	24 MHz	1.0
3	24 MHz	1.4

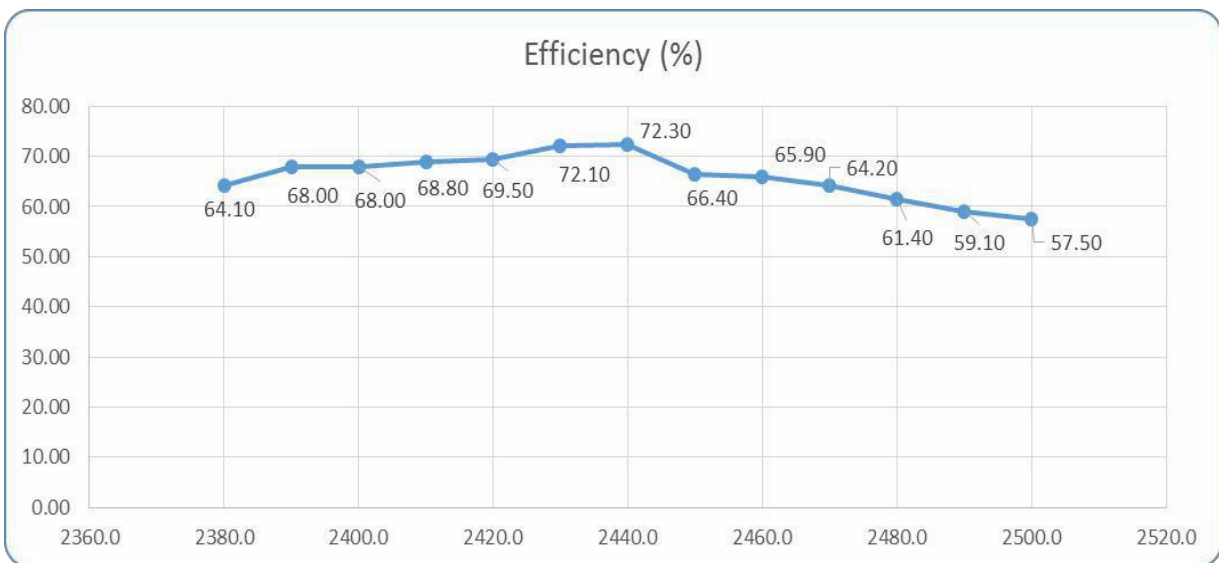
Radiation Pattern

The Gain pattern is measured in FAR-field chamber. DUT is placed on the table of rotator, a standard horn antenna and Vector Network Analyzer is used to collect data.

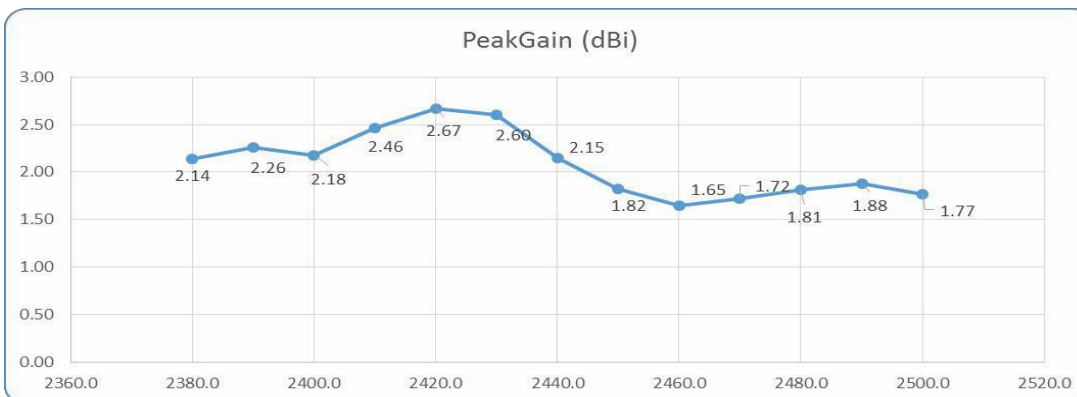
台灣永誠科技股份有限公司
CCL Electronic Co., Ltd.



◎ efficiency

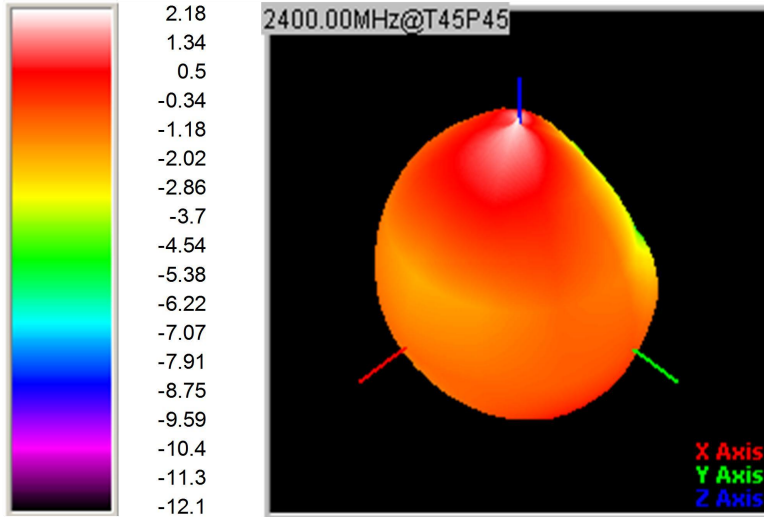


◎ maximum gain

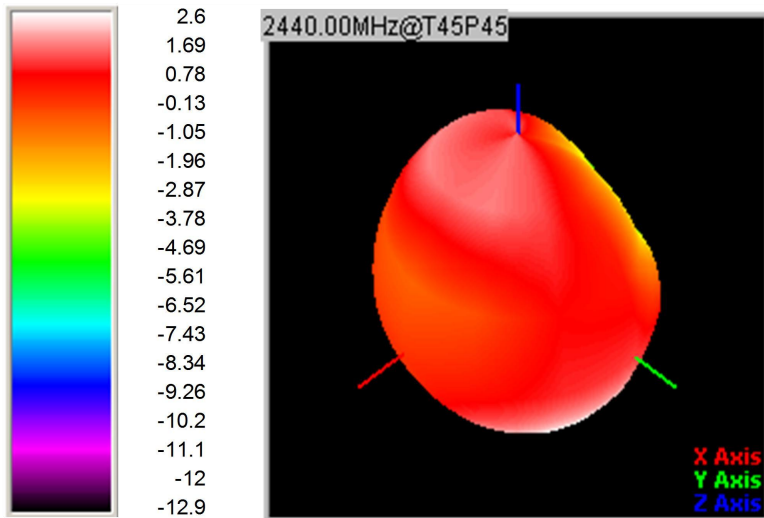


台灣永誠科技股份有限公司
CCL Electronic Co., Ltd.

© 3D Gain Pattern (2400 MHz)

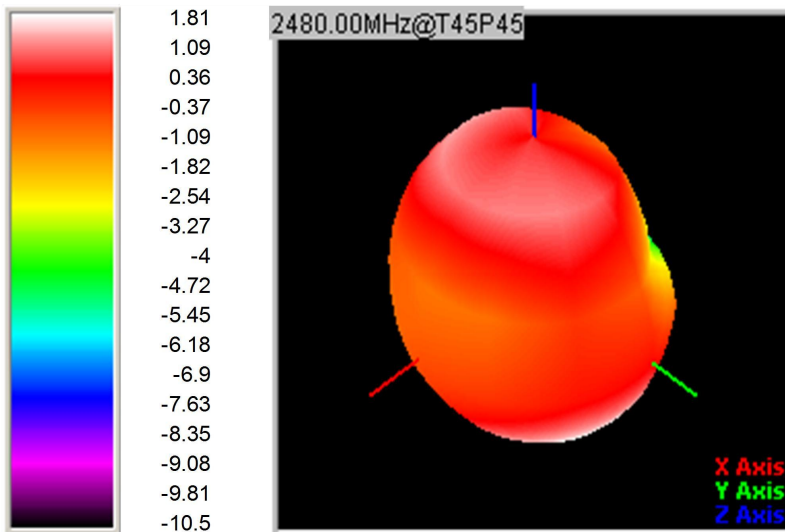


© 3D Gain Pattern (2440 MHz)



© 3D Gain Pattern (2480 MHz)

台灣永誠科技股份有限公司
CCL Electronic Co., Ltd.



7. Environmental Characteristics

(1) Reliability Test

Item	Condition	Specification
Thermal shock	<ol style="list-style-type: none"> 30±3 minutes at -40° C±5° C, Convert to +105° C (5 minutes) 30±3 minutes at +105° C±5° C, Convert to -40° C (5 minutes) Total 100 continuous cycles 	No apparent damage Fulfill the electrical spec. after test.
Humidity resistance	<ol style="list-style-type: none"> Humidity: 85% R.H. Temperature: 85±5° C Time: 1000 hours. 	No apparent damage Fulfill the electrical spec. after test.
High temperature resistance	<ol style="list-style-type: none"> Temperature: 150° C±5° C Time: 1000 hours. 	No apparent damage Fulfill the electrical spec. after test.
Low temperature resistance	<ol style="list-style-type: none"> Temperature: -40° C±5° C Time: 1000 hours. 	No apparent damage Fulfill the electrical spec. after test.
Soldering heat resistance	<ol style="list-style-type: none"> Solder bath temperature : 260±5°C Bathing time: 10±1 seconds 	No apparent damage
Solderability	The dipped surface of the terminal shall be at least 95% covered with solder after dipped in solder bath of 245±5°C for 3±1 seconds.	No apparent damage

(2) Storage Condition

(a) At warehouse:

The temperature should be within 0 ~ 30°C and humidity should be less than 60% RH.

台灣永誠科技股份有限公司
CCL Electronic Co., Ltd.

The product should be used within 1 year from the time of delivery.

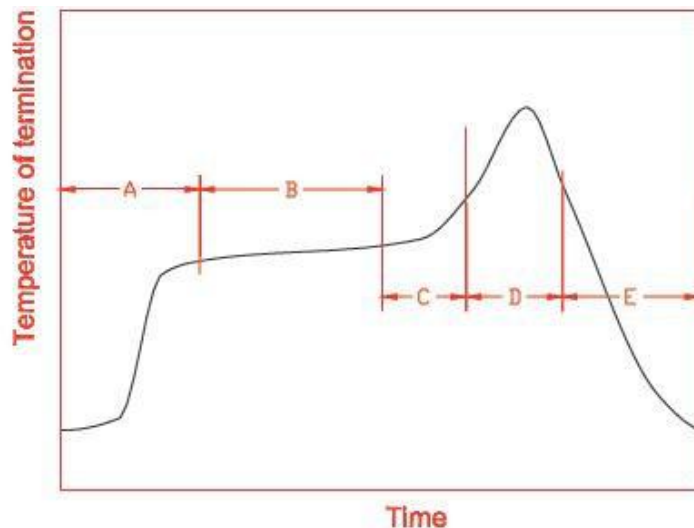
(b) On board:

The temperature should be within -40~85°C and humidity should be less than 85% RH.

(3) Operating Temperature Range

Operating temperature range : -40°C to +105°C.

8. Recommended Reflow Soldering



A	1 st rising temperature	The normal to Preheating temperature	30s to 60s
B	Preheating	140°C to 160°C	60s to 120s
C	2 nd rising temperature	Preheating to 200°C	20s to 40s
D	Main heating	if 220°C	50s~60s
		if 230°C	40s~50s
		if 240°C	30s~40s
		if 250°C	20s~40s
		if 260°C	20s~40s
E	Regular cooling	200°C to 100°C	1°C/s ~ 4°C/s

*reference: J-STD-020C

(1) Soldering Gun Procedure

Note the follows, in case of using solder gun for replacement.

(a) The tip temperature must be less than 350°C for the period within 3seconds

台灣永誠科技股份有限公司
CCL Electronic Co., Ltd.

By using soldering gun under 30 W.

(b) The soldering gun tip shall not touch this product directly.

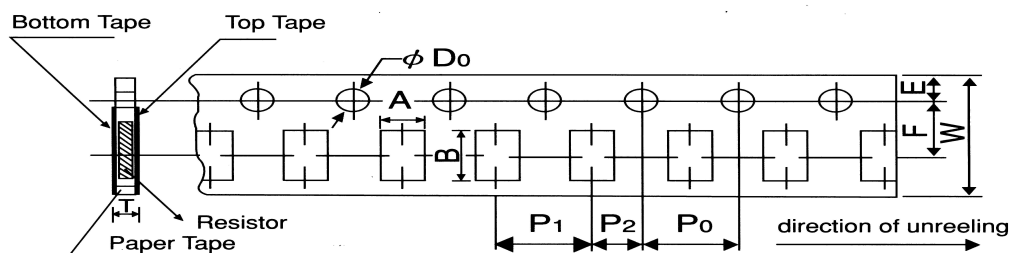
(2) Soldering Volume

Note that excess of soldering volume will easily get crack the body of this product.

9. Taping Package and Label Marking: (unit: mm)

(1) Quantity/Reel: 5000pcs/Reel

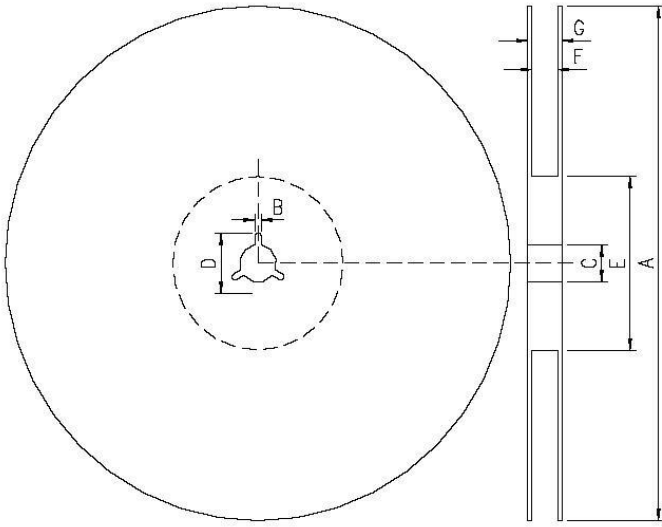
(2) Carrier tape dimensions



Packing	Style	A	B	W	F	E	P ₁	P ₂	P ₀	D ₀	T
Paper	2012	1.6±0.15	2.4±0.2	8.0±0.2	3.5±0.05	1.75±0.1	4.0±0.1	2.0±0.05	4.0±0.1	$\begin{matrix} +0.1 \\ \psi 1.5 \\ -0 \end{matrix}$	0.84±0.1
Paper	3216	2.0±0.15	3.6±0.2	8.0±0.2	3.5±0.05	1.75±0.1	4.0±0.1	2.0±0.05	4.0±0.1	$\begin{matrix} +0.1 \\ \psi 1.5 \\ -0 \end{matrix}$	0.84±0.1

(3) Taping reel dimensions

台灣永誠科技股份有限公司
CCL Electronic Co., Ltd.



A	178.0±2.0
B	2.0±0.5
C	13.0±0.5
D	21.0±0.8
E	62.0±1.5
F	9.0±0.5
G	13.0±1.0