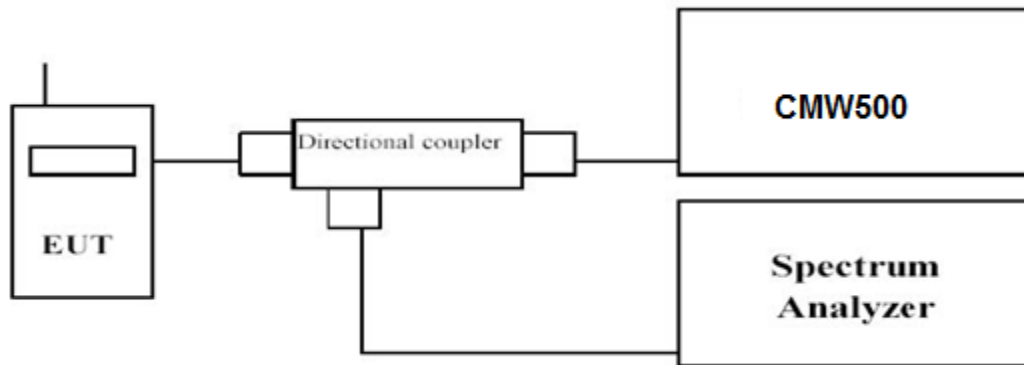


4.7 Peak-to-Average Ratio (PAR)

LIMIT

The Peak-to-Average Ratio (PAR) of the transmission may not exceed 13 dB.

TEST CONFIGURATION



TEST PROCEDURE

Use spectrum to measure the total peak power and record as P_{Pk} . Use spectrum to measure the total average power and record as P_{Avg} . Both the peak and average power levels must be expressed in the same logarithmic units (e.g., dBm).

Determine the PAPR from:

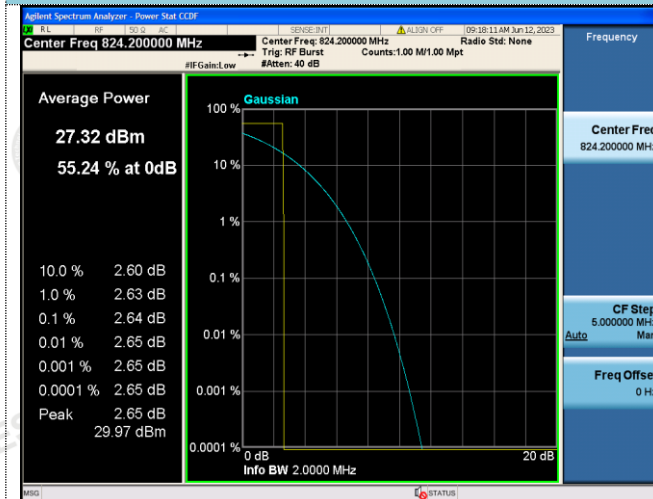
$$PAPR (dB) = P_{Pk} (dBm) - P_{Avg} (dBm).$$

TEST RESULTS

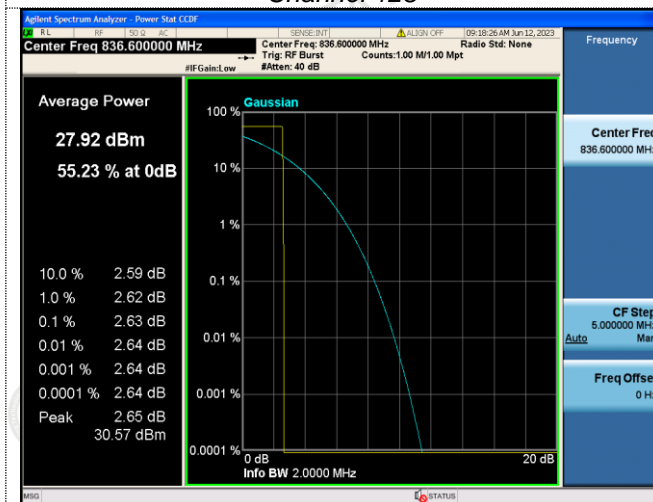
	GSM 850	GPRS 850
Frequency (MHz)	Measured (dB)	Measured (dB)
824.20	2.64	2.65
836.60	2.63	2.64
848.80	2.64	2.63

	GSM 1900	GPRS 1900
Frequency (MHz)	Measured (dB)	Measured (dB)
1850.20	2.66	2.65
1880.00	2.65	2.66
1909.80	2.64	2.65

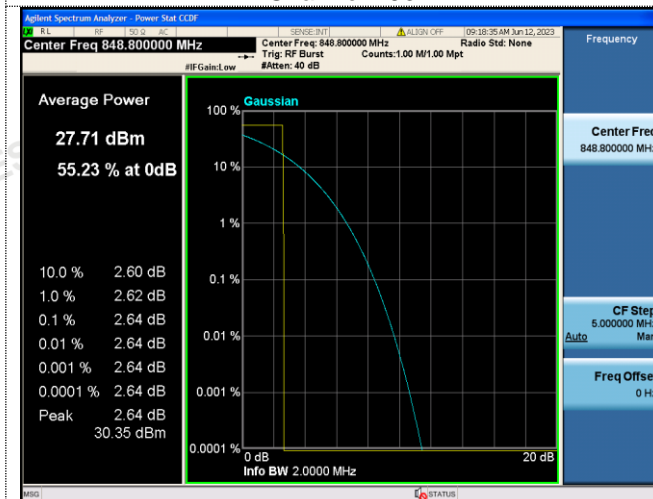
GSM 850



Channel 128

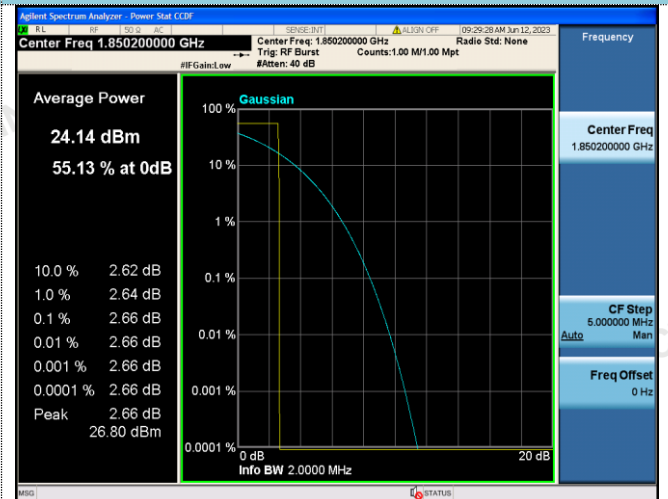


Channel 190

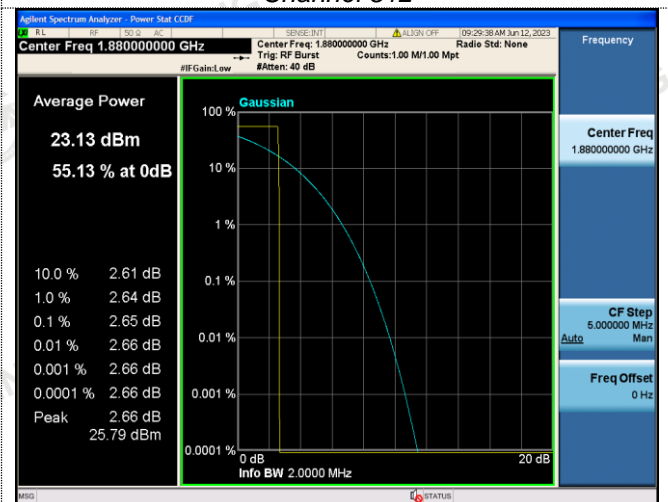


Channel 251

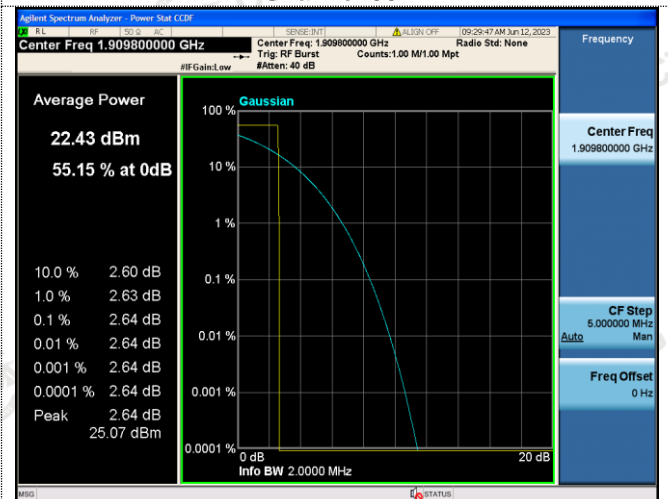
GSM 1900



Channel 512

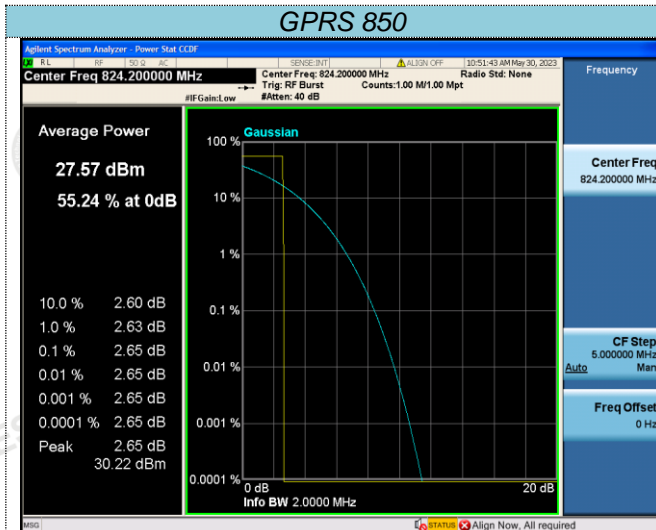


Channel 661

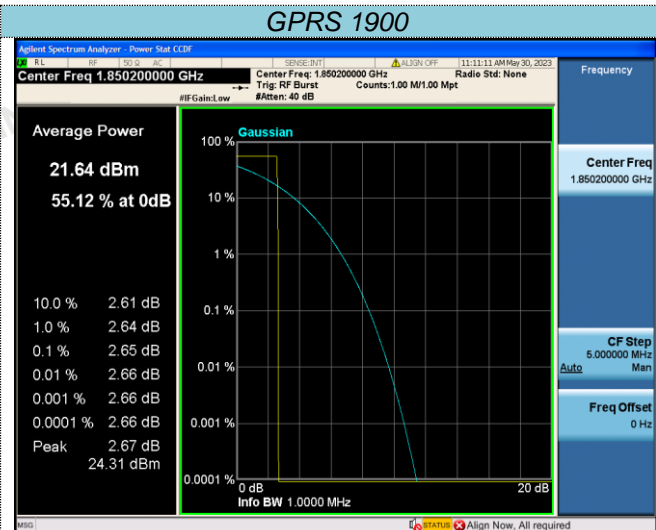


Channel 810

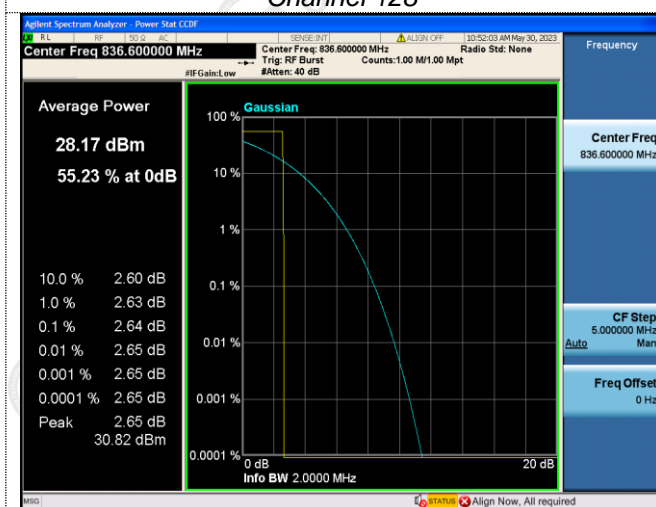
GPRS 850



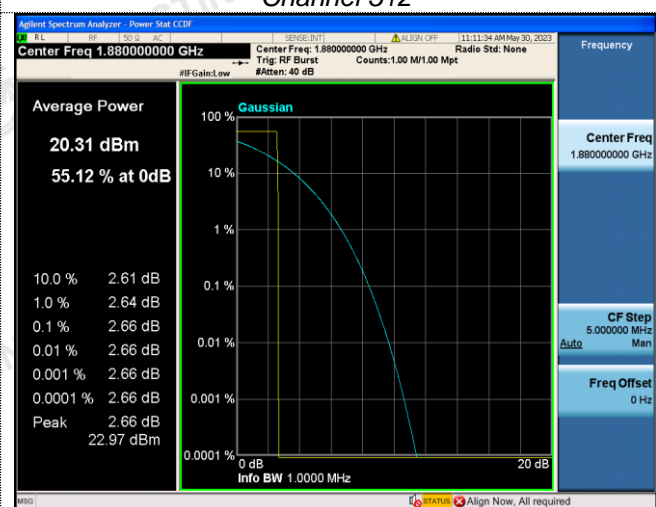
GPRS 1900



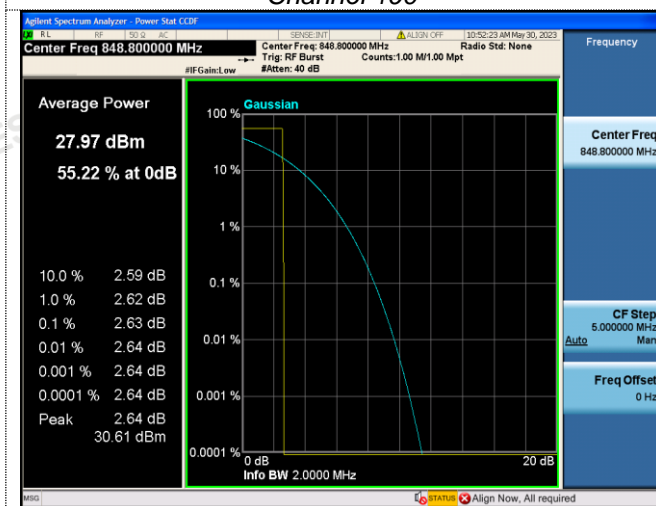
Channel 128



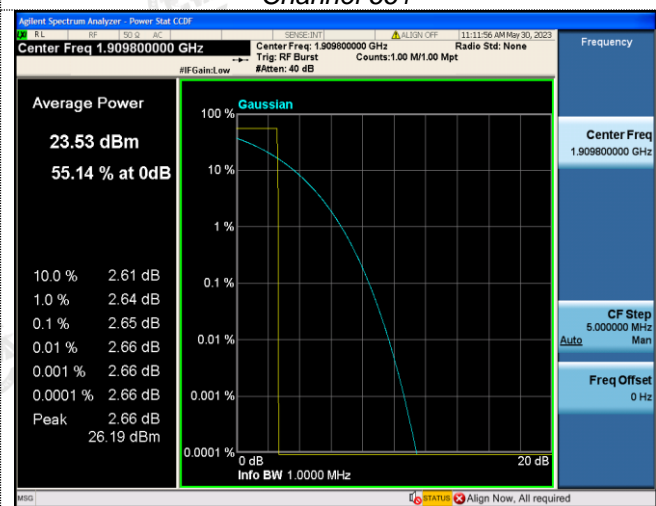
Channel 512



Channel 190



Channel 661



Channel 251



Channel 810



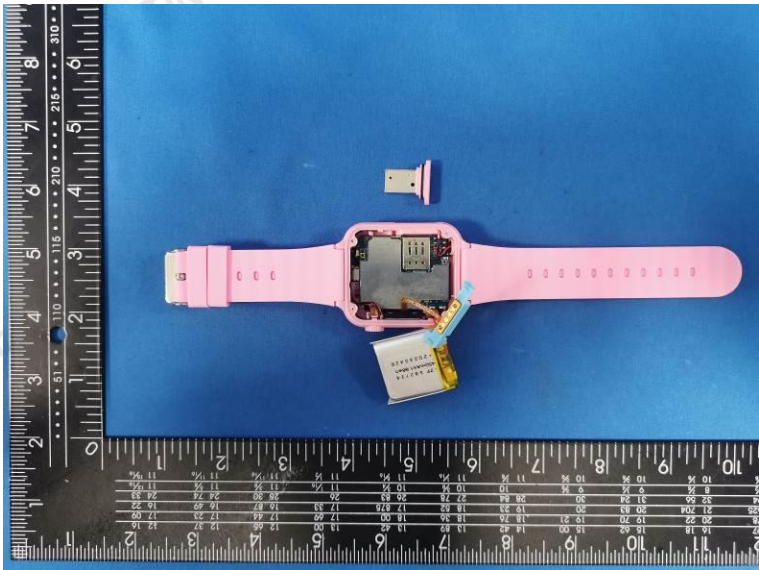
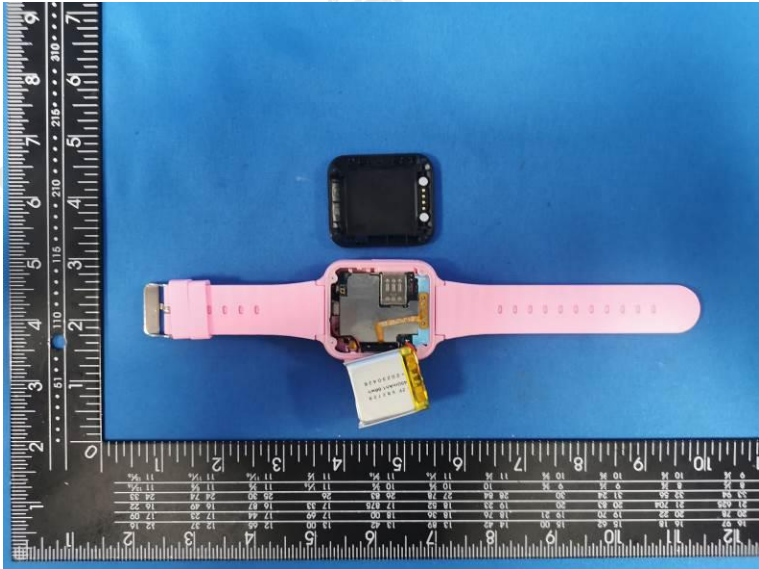
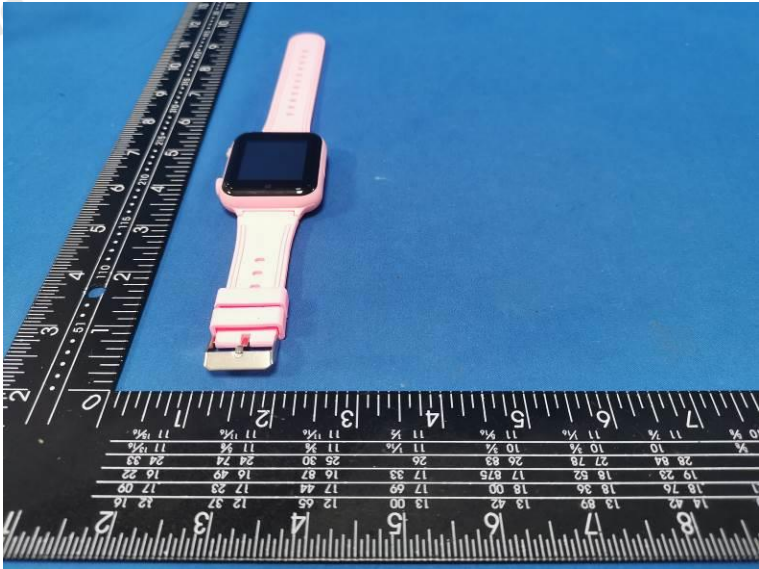
5 Test Setup Photos of the EUT

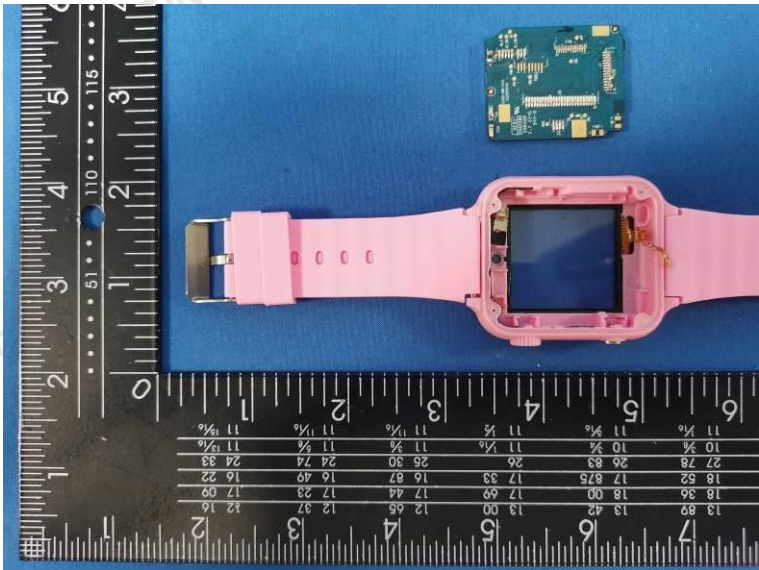
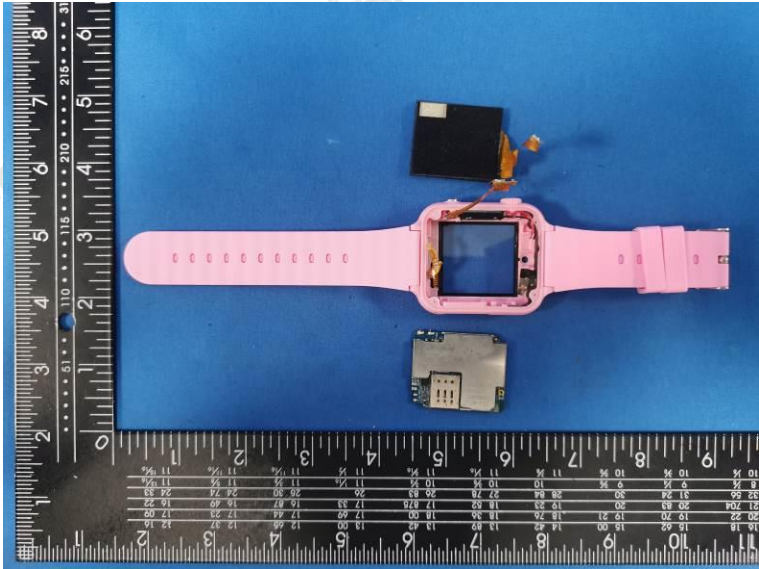
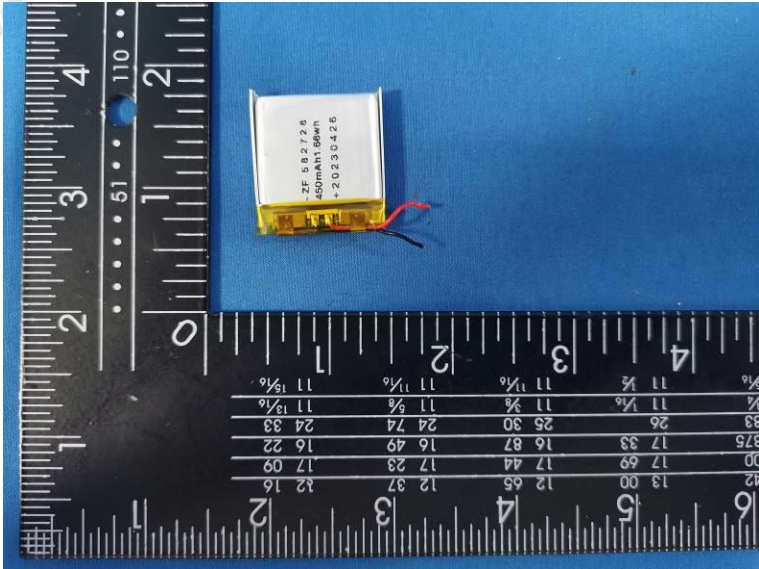


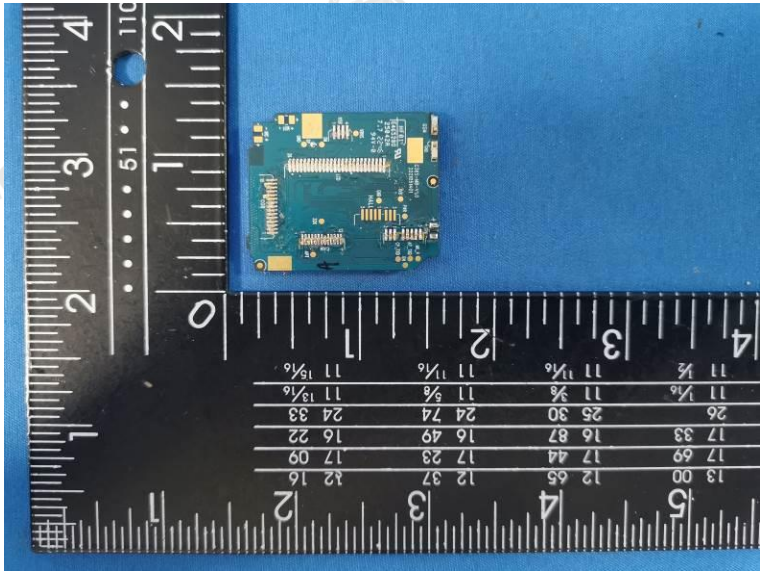
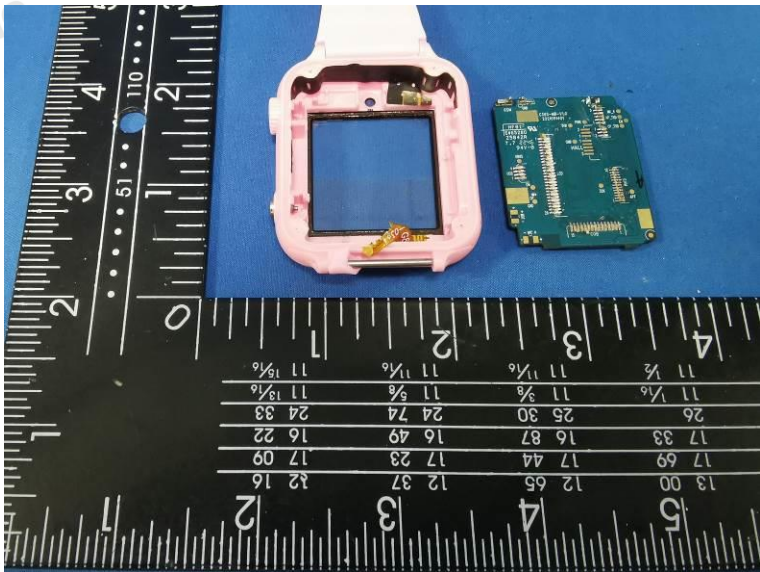
6 External and Internal Photos of the EUT

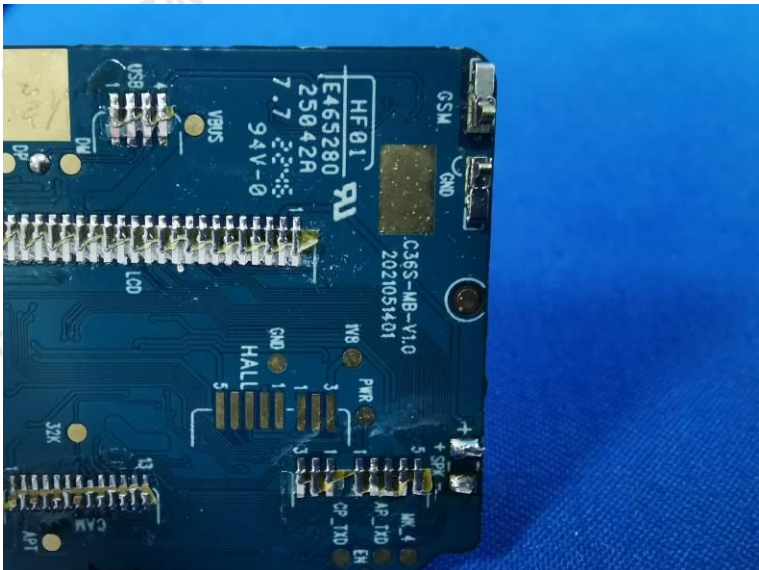
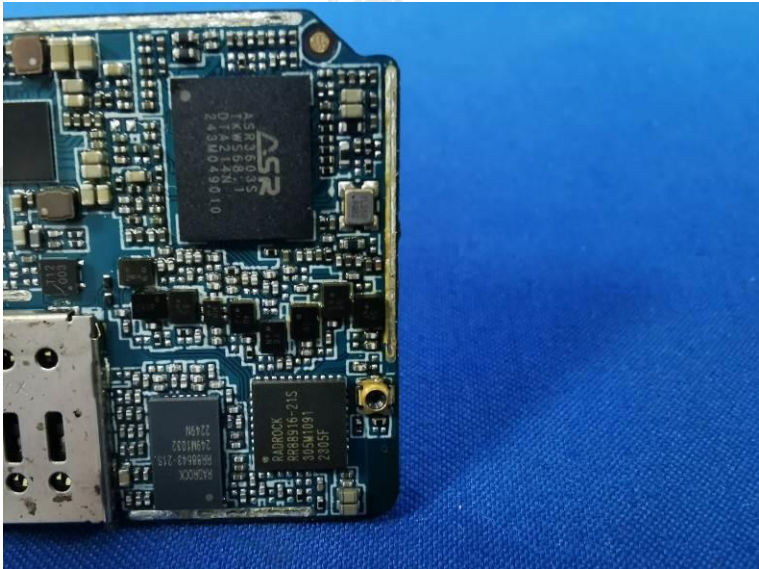
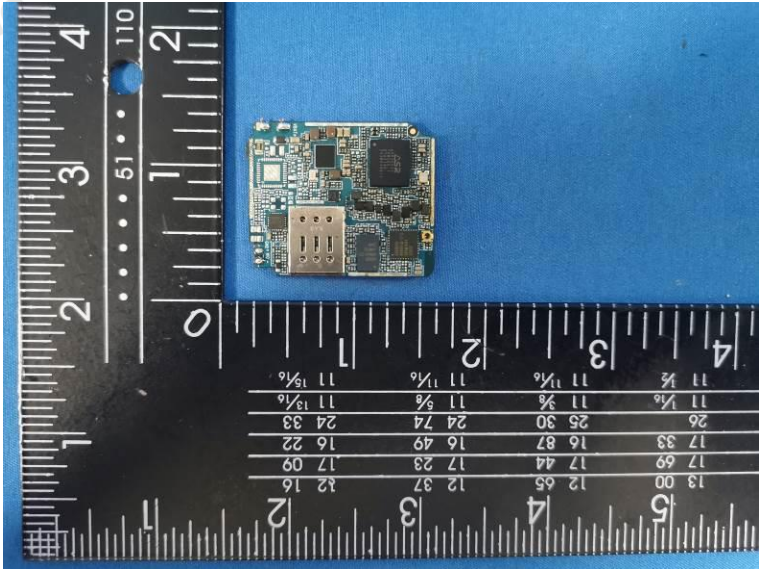


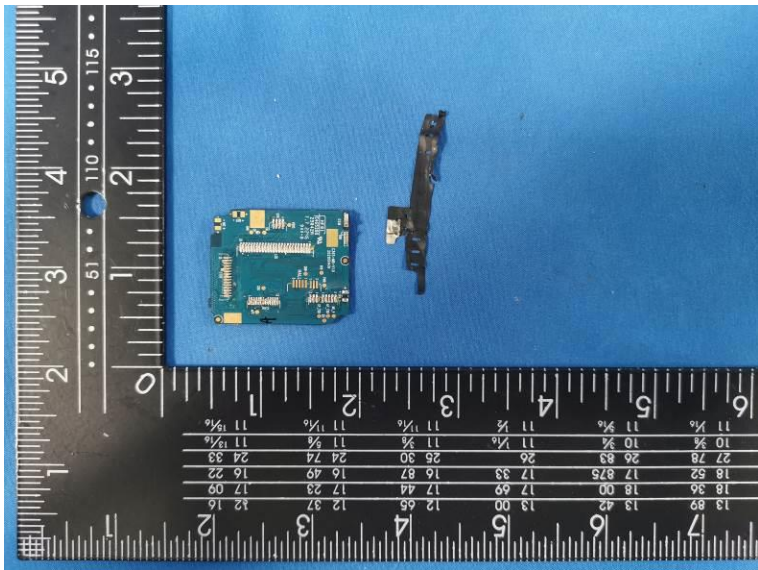












.....End of Report.....