

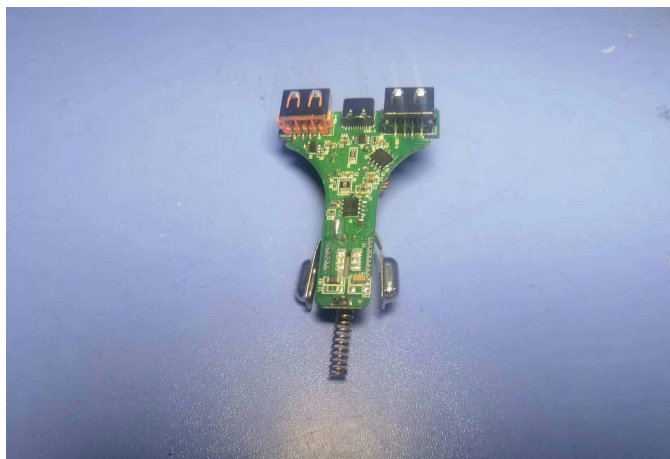
Product specification

Quick Reference Date

	Antenna module on the FM	
Frequenc Range	87.5MHz-108MHz	
Ant. Port Input Pwr. (dBm)	0 (Typ. BT class 2 output power)	
Tot. Rad. Pwr. (dBm)	-1.2 (Input pwr – loss pwr)	
Peak EIRP(dBm)	0	
Directivity (dBi)	1 (all direction antenna)	
Efficiency (dB)	0	
Gain (dBi)	-0.58(Avg Gain XY-plane)	
Maximum Power (dBm)	0 (XY-plane)	
Minimum Power (dBm)	(XY-plane)	
Avg. Power (dBm)	(XY-plane)	
Input Impedence(ohm)	50	
Polarization Type	V ertical & Horizontal	
V . S .W .R	< 1.4	

All the technical data and information contained herein are subject to change without prior notice

Antenna Layout & module on the system board

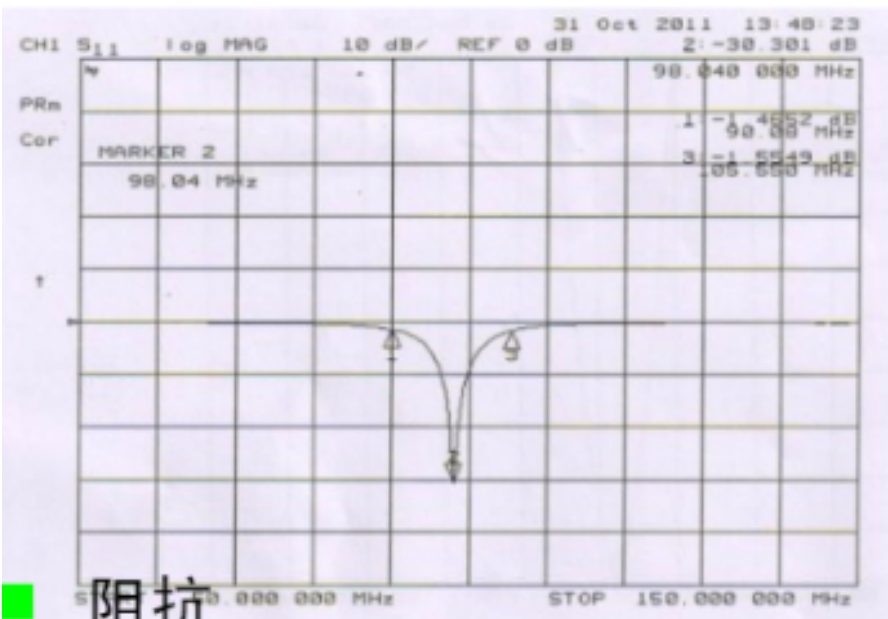
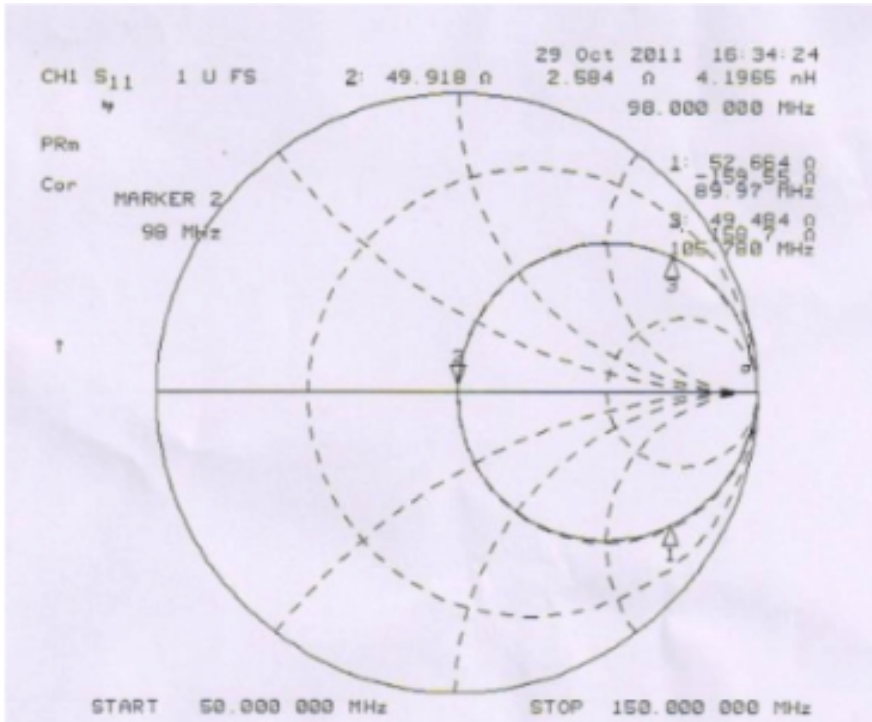


Antenna Gain

Gain Table

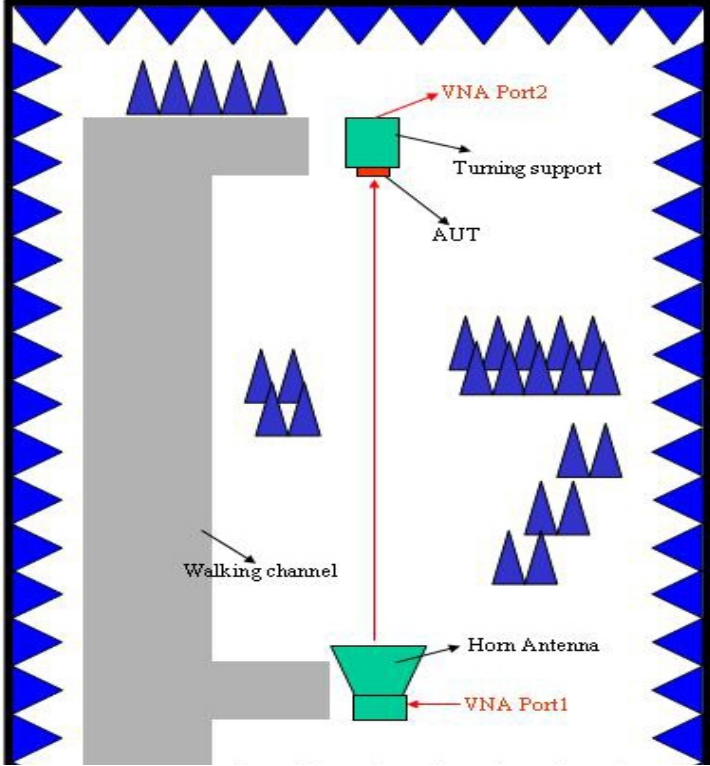
Unit in dBi	XY-plane		XZ-plane		YZ-plane		Efficiency
	Peak	Avg.	Peak	Avg.	Peak	Avg.	
Module Board	-0.58	-0.7	-2.1	-3.6	-1.3	-3.0	

Return Loss

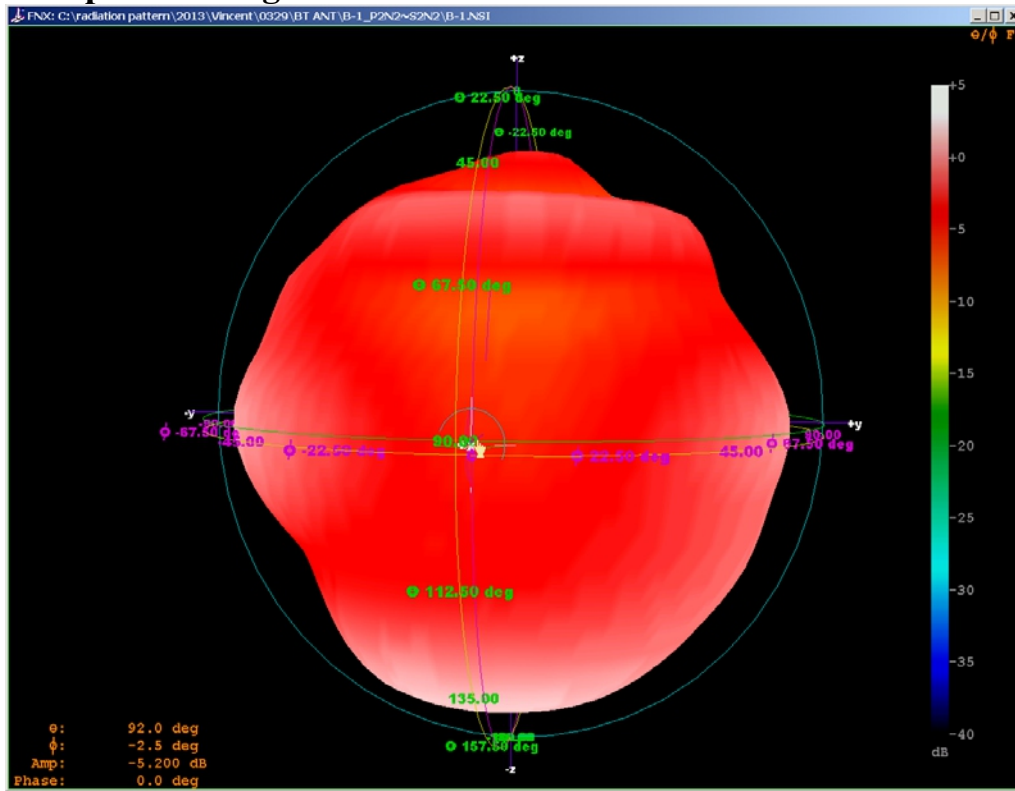


■ 阻抗

The Environment of Antenna Radiation Pattern



3D radiation pattern diagram



XY-plane

XZ-plane

YZ-plane