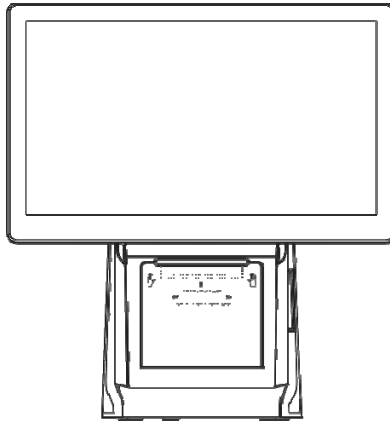


Smart Desktop Terminal

INSTRUCTIONS



Thanks for your purchase. Please read this guide first before you use the device, and it will ensure your safety and the proper use of equipment.

About the equipment configuration, please check with the relevant contracts of the device or consult the seller who sells the equipment to you.

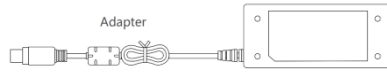
The pictures in this guide are for reference only, if some pictures do not match the physical product, please in kind prevail.

In order to ensure the normal effect of the device, please use the original power adapter.

Without the company's permission, anyone should not use any forms or any ways to copy, excerpts, backup, modify, spread, translated into other languages, all or partly used for commercial.

Accessories

Accessory name	QTY
Adapter	1
AC cable	1
Instructions	1
58mm printing paper baffle	2



Smart Desktop Terminal
INSTRUCTIONS



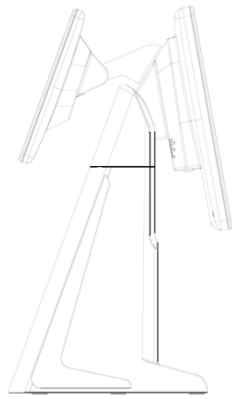
Instructions



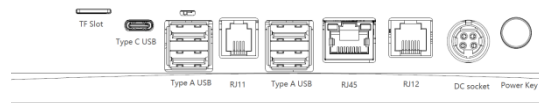
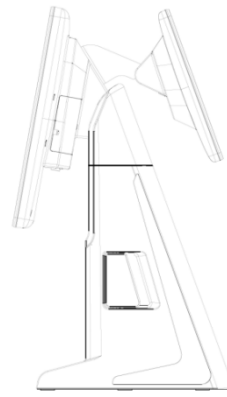
58mm printing paper baffle

Interfac

Front view

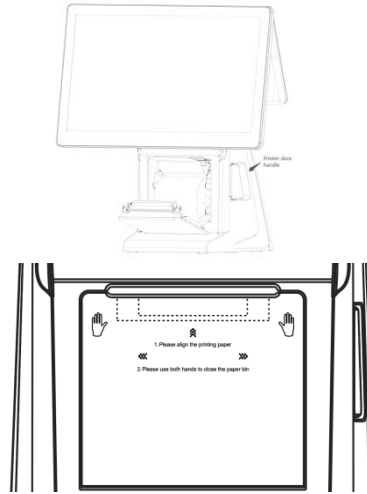


e



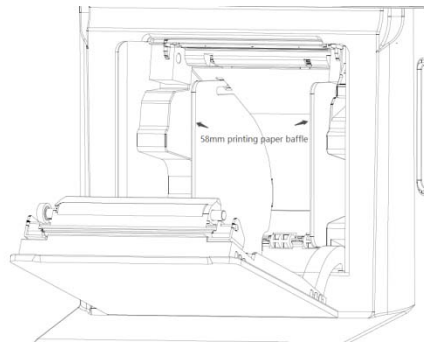
Place Printing paper

1. Open the paper container through printer door handle.
2. Put in the paper as shown and pull some paper outside then close the printer door.
3. Put 80mm wide printing paper in default, the maximum diameter of the 80mm wide printing paper roll is 80mm .



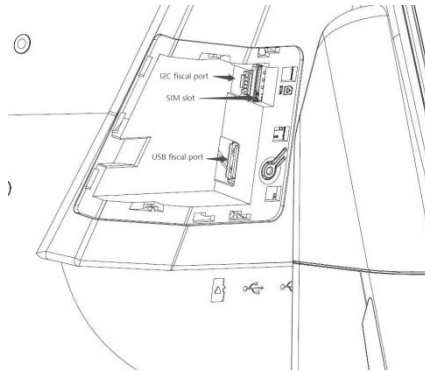
**Install 58mm wide printing paper
baffle**

The maximum diameter of the 58mm wide
printing paper roll is 80mm.



Fiscal module/USIM(compatible): install and uninstall

Install/uninstall fiscal module/USIM



Use Notes

The operating environment

- Please do not use this device in the thunderstorm weather, because the thunderstorm weather may result in the equipment failure, or click the danger.
- Please put the equipment from rain, moisture and liquids containing acidic substances, or it will make the electronic circuit boards corrosion.
- Don't store the device in overheating, high temperature, or it will shorten the life of electronic devices.
- Don't store the device in a too cold place, because when the device's temperature rises, moisture can form inside, and it might damage the circuit board.
- Do not attempt to disassemble the device, non-professional personnel handling can damage it.
- Do not throw, beat or intense crash the device, because rough treatment will destroy the device's parts, and it may cause the device failure.

Children's health

- Please put the device, its components and accessories in the place where children can't touch.
- This device is not toys, so children should be under adult supervision to use it.

The adapter security

- When powering the device, power sockets should be installed near the device and should be easy to hit. And the areas must be far away from the debris, flammable or chemicals.
- Please do not fall or crash the adapter. When the adapter shell damaged, please ask the vendor for replacement.
- If the adapter or the power cord is damaged, please do not continue to use, so as to avoid electric shock or fire.

- Please do not fall or crash the adapter. When the adapter shell is damaged, please ask the vendor for replacement.
- Please do not use a wet hand to touch the power cord, or with the power supply cable, to touch the adapter.

Repair and Maintenance

- Don't use strong chemicals or powerful detergent to clean the device. If it is dirty, please use a soft cloth to clean the surface with a very dilute solution of glass cleaner.
- Screen can be wiped with alcohol cloth, but be careful not to let the fluid accumulate around the screen. Dry the display with a soft non-woven cloth immediately, in order to prevent the screen from leaving the strip traces.

WARRANTY TERMS

Name of product: _____

Model of product: _____

Warranty terms & conditions:

1. We will provide you with excellent after-sale service.
2. Damage such as a user due to human factors, the company's repair charge maintenance fees.
3. Please keep this card, the warranty will be based on it.

CERTIFICATE OF QUALITY

The product has been tested and provided to be qualified for delivery.

Inspector:

Inspection date:

FCC Warning

This device complies with part 15 of the FCC Rules. Operation is subject to the following two conditions:

(1) This device may not cause harmful interference, and (2) this device must accept any interference received, including interference that may cause undesired operation.

Any Changes or modifications not expressly approved by the party responsible for compliance could void the user's authority to operate the equipment.

Note: This equipment has been tested and found to comply with the limits for a Class B digital device, pursuant to part 15 of the FCC Rules. These limits are designed to provide reasonable protection against harmful interference in a residential installation. This equipment generates uses and can radiate radio frequency energy and, if not installed and used in accordance with the instructions, may cause harmful interference to radio communications. However, there is no guarantee that interference will not occur in a particular installation. If this equipment does cause harmful interference to radio or television reception, which can be determined by turning the equipment off and on, the user is encouraged to try to correct the interference by one or more of the following measures:

- Reorient or relocate the receiving antenna.
- Increase the separation between the equipment and receiver.
- Connect the equipment into an outlet on a circuit different from that to which the receiver is connected.
- Consult the dealer or an experienced radio/TV technician for help.

This equipment complies with FCC radiation exposure limits set forth for an uncontrolled environment.

This equipment should be installed and operated with minimum distance 20cm between the radiator & your body.