

bixdo K30 Smart Cordless Water Dental Flosser

[Please read all instructions carefully before children use the product, and keep them in a safe place.]

This manual is applicable to all products of the K30 model, with the only difference being color variations among different products.

TABLE OF CONTENTS

I .Important Safeguard -----	1
II .Product Description -----	4
III.Product Display Instructions -----	7
IV.Usage Steps -----	9
V .Charging & Sterilization Instructions -----	13
VI.Cleaning and Maintenance -----	15
VII.Troubleshooting -----	17
VIII.Instructions for Removing Built-in Batteries -----	18
IX.Warranty -----	20

I .IMPORTANT SAFEGUARD

This product is suitable for children aged 3 and above. Before teaching child how to use this product, caregivers must carefully read the instructions, especially the important safety instructions highlighted in bold.



Important Reminders: For the safe operation of this product for children, must follow the following points:

- 01. Handle the packaging of this product carefully, keeping it away from infants and young children to prevent accidental suffocation.**
- 02. When children use this product, they should be supervised and guided by a caregiver to ensure safe and proper usage. Children should be made aware of potential dangers to avoid accidents or injuries.**
- 03. Do not allow children to treat this product as a toy to play with to prevent accidents or injuries.**
- 04. Keep the product out of the reach of children under 3 years old, and do not allow them to come into contact with or operate the product to prevent accidents or injuries.**
- 05. Do not entrust the cleaning and maintenance of the product to children. Before adults perform cleaning and maintenance, ensure that the product is not charging and is powered off.**
- 06. Children undergoing dental treatment or experiencing oral discomfort (including the teething period) should consult a dentist before using this product to avoid potential harm to the mouth and body.**



Warning: To reduce the risk of electric shock and other potential hazards to children, please follow the precautions:

01. Before using this product for the first time, check whether the USB charging cable of the charging base is damaged. If the USB charging cable is damaged, please contact customer service for a replacement before use.

02. Do not aim the tip at the eyes, ears, nasal passages, or other sensitive areas under the tongue. The water stream produced by this product may cause damage to these areas or lead to accidents.

03. If children experience situations such as water inhalation during the correct operation of this product, it is recommended for caregivers to have children pause usage.

04. Do not disassemble or alter the components of this product to avoid damage or potential dangers.

05. Avoid dropping or subjecting this product to impacts. If the product is damaged (tip, body of the water flosser, and/or charger), do not use it anymore.

06. Do not immerse the product in fire or heat it.

07. Avoid prolonged immersion of this product in water to prevent the loss of product functionality.

08. Do not plug or unplug the power plug (self-provided) with wet hands. When unplugging the power, be sure to grip the plug, not the USB charging cable.

09. Do not damage, destroy, or modify the charging equipment. Do not forcefully pull, bend, twist the USB charging cable, or place heavy objects on it, or wedge the USB charging cable between objects.

10. Do not drop or insert any foreign objects into any openings of the product.

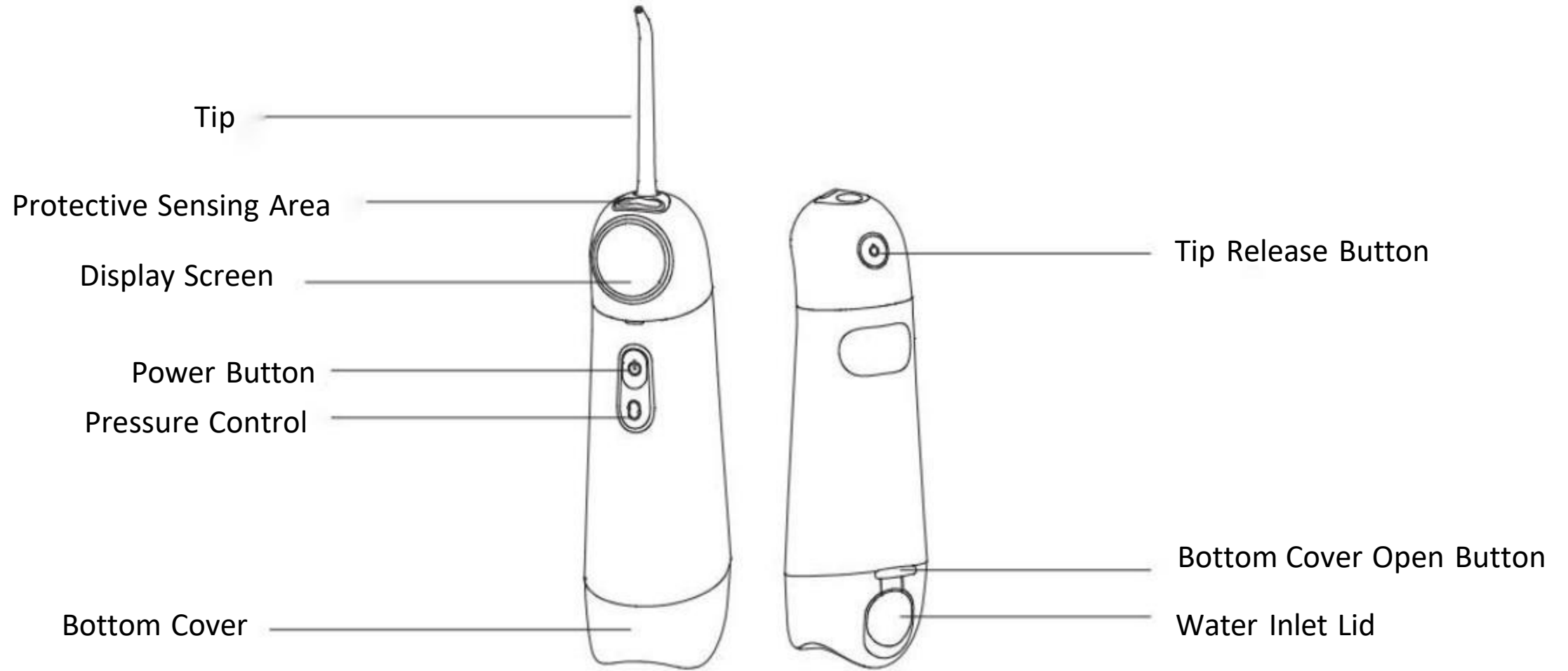
11. Keep the product, charging base, and USB charging cable away from heated surfaces.
12. Avoid placing the product in high-temperature or humid environments, and prevent direct sunlight exposure.
13. After use, adults should clean the product to maintain dryness and prevent bacterial growth.
14. Please use a power adapter that complies with national safety certification requirements.



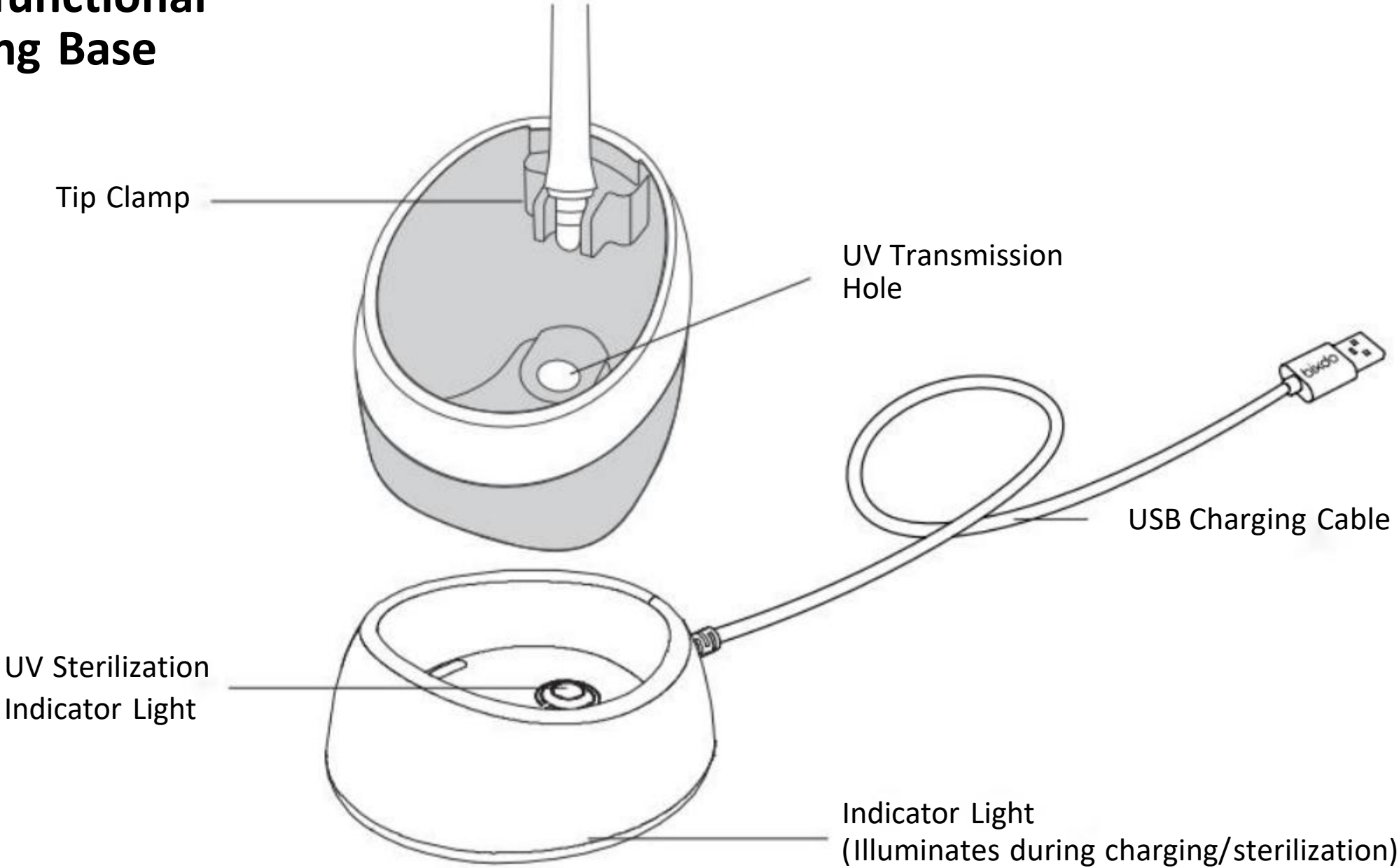
Warning: To reduce the risk of burns, electric shock, fire, personal injury, and other hazards, please remember the following:

01. Do not operate this product in ways other than those specified in the user manual.
02. Do not use this product without installing the tip.
03. Only use tips and accessories provided, sold, or recommended by bixdo.
04. Do not fill the water tank with water above 40。 C/104.0 。 F and use it for oral cleaning to avoid scalding.
05. Do not use this product for purposes other than oral hygiene.
06. Do not share tips with family or others, as it may cause infection or inflammation.
07. Do not use iodine, saline solution, or water-insoluble concentrated essential oils in this product, as they may reduce product performance and lifespan.
08. Do not use or operate this product in environments with aerosols or oxygen accumulation in the air.

II .PRODUCT DESCRIPTION



Multi-functional Charging Base



TIP USAGE:

bixdo K30 Smart Cordless Water Dental Flosser includes:

1 standard tip

1 soft clean tip

Replacement tips can be purchased from the official bixdo store or authorized store.

It is recommended to replace the tips every 6 months.

Soft Clean Tip

For water flosser beginners or users with sensitive teeth.



Standard Tip

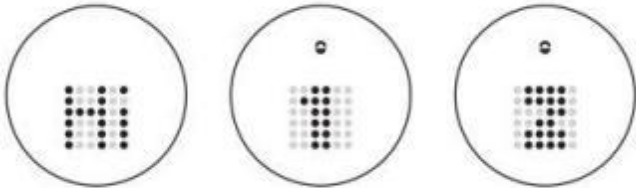

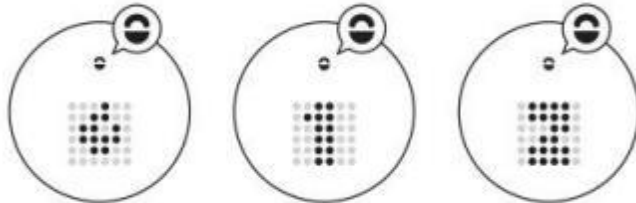
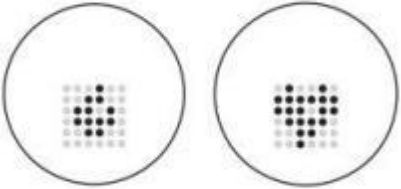
For general use.



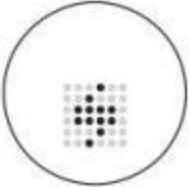
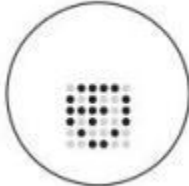

*It is recommended for children to start with the Soft Clean Tip, beginning with a gentle water flow for dental care.

III. PRODUCT DISPLAY INSTRUCTIONS

Screen Display and Sound Alerts

<p>Power On / Level Selection</p>	 <p>A "beep" sound Displays "Hi" and the number "1" or "2"</p>	<p>During Flossing</p>	 <p>Displays a small water droplet animation indicating the operation.</p>
<p>Protective Sensing Indication</p>	 <p>The sensing light illuminates, indicating the sensing area is active.</p>	<p>End of Water Flossing</p>	 <p>Displays a water droplet or heart icon (the heart appears after flossing for 30 seconds).</p>

Charging Display

Low Battery	 Lightning symbol flashes twice, and the water flosser emits a beeping sound.
Sterilization Mode	 Displays a shield guardian animation, and the charging base has rotating lights. After 6 minutes, the lights stop, the sterilization process completed.
Charging	 Displays a lightning animation. Once fully charged, it will show a static lightning symbol. Charging is expected to take approximately 8 hours.

IV.USAGE STEPS

Step One: Preparing for Use

01. Confirm that the battery is sufficiently charged (in the powered-off state, press the power/level button until the screen displays "Hi," "1," or "2"). For new devices, charge fully before use. If the water flosser screen flashes the lightning symbol twice and beeps, it indicates low battery; please charge it promptly.
02. Ensure that no objects cover the black "Protective Sensing Area" at the top of the water flosser.
03. After pressing the power button, you can cover the protective sensing area with your hand. If the water flosser starts running, it indicates that the protective sensing function is working correctly.

Step Two: Installing/Removing Tips

01. Take out the tip. Align the bottom of the tip with the tip hole at the top of the product, insert the tip downward, and rotate until you hear a "click," indicating the tip is securely installed.
02. Before removing the tip, ensure the machine is in the off state. Press the tip release button on the device and then pull the tip out.



Warning: Do not press the tip release button during product use.

*Reminder: It is recommended that tip installation or removal be performed by adults.

Step Three: Adding Water to the Reservoir

Open the water inlet lid on the bottom side of the device, place the water flosser horizontally, and fill the reservoir with water. Then cover the water inlet lid.

Step Four: Selecting the level

Gently press the level button to select the desired level. After a "beep" sound, the screen will display "Hi" and the number "1" or "2". The number represents the strength of the water pressure, with level 2 having a stronger pulsating water flow for cleaning compared to level 1, which is soft cleaning mode.

Reminder: It is recommended that children start with level 1, the soft cleaning mode, to adapt to the water flow for water flossing.

Step Five: Preparing for Water Flossing

Before use, slightly bend forward, tilt your head, insert the tip into your mouth, aiming at the teeth, interdental spaces, or gum line. Ensure that the water flow is perpendicular to the flossing area, and keep your mouth slightly open to allow the water to flow out naturally.

Reminder:

01. It is normal to experience itching or gum bleeding the first time you use the water flosser. If you have any concerns, please consult with a dentist.
02. If children's oral conditions are not in the tooth-changing period and gum bleeding still occurs during use, please check if the child's operating method is correct.

Step Six: Start Flossing

After placing the tip in your mouth, press the power button to activate the water flosser. If you need to pause during use, press the power button again.

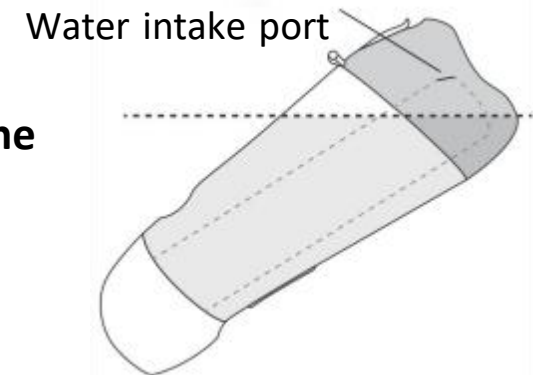
Water Flossing Techniques:

In order to achieve a good cleaning effect, it is recommended to start cleaning from the back teeth towards the front teeth. Move the tip along the gum line and between the teeth in a 'M' shaped trajectory, and pause briefly for 1-2 seconds in the interdental spaces.

Divide the oral cavity into upper and lower dental regions. The overall flossing time for the oral cavity should not be less than 30 seconds. After children complete the cleaning cycle, it is advisable to suggest spending extra time cleaning the interdental spaces and gum line of the molars. This area is prone to accumulation of debris and plaque, so daily cleaning attention is essential.

△ Attention:

01 During use, please ensure that the water flosser is held in a vertical position. If the machine is tilted too much, the water intake port in the water tank may not draw water properly, causing the tip not to spray water.



02 This product is equipped with a child protection feature. The black 'Protection Sensing Zone' at the top of the device detects when the tip is inside the mouth. Press the power button to activate the water spray. If the device is not turned off during use and the tip is moved away from the mouth, the water flow will rapidly decrease and stop.

03 This product is set to automatically shut down 90 seconds after startup to control the flossing time. If you wish to continue using it, please press the power button again.

⚠ Note: When preschool children use the bixdo K30 smart water dental flosser, there must be a parent nearby to personally guide them.

Step Seven: Completion

01 After completing water flossing, please turn off the device by pressing the power button first and then move the tip away from the mouth.

02 After use, please empty the remaining water in the reservoir. Press the cover button, open the bottom cover, invert the device, and pour out all the remaining water.

Reminder:

If not in use for an extended period, it is recommended to drain the water from the product's reservoir to prevent water quality deterioration and the generation of odors. When using it again, please refer to the sixth part of the manual for cleaning and maintenance, clean the product, and then use it.

V .Charging & Sterilization Instructions

During product usage, when the lightning symbol starts flashing on the screen and emits a "beep" sound prompt, please charge it promptly.

Notes:

During initial use or if unused for more than 6 months, the circular light at the bottom of the charging base or the screen of the water flosser may not light up immediately. It will resume normal operation after a few minutes of continued charging.

Charging time may be extended when the temperature exceeds the recommended range (10。 C/50°F to 35。 C/95°F). This product uses a lithium-ion battery, and charging after use or continuous charging will not affect battery life. Please ensure to fully charge it every six months. Not using the product for more than 6 months may affect the battery.

01 Place the product facing forward on the charging base. Upon connecting the charging base to the power source, you will hear a "beep" sound prompt, and the circular light at the bottom of the charging base will stay on, indicating that charging has begun.

02 During charging, the product will automatically start UV sterilization. The UV sterilization light on the charging base will turn on, and the light will pass through the UV transmission holes at the bottom of the water flosser to sterilize the interior of the reservoir and the tip stored in the bottom cover. The product screen will display a sterilization animation, and the charging base will have rotating meteor lights.

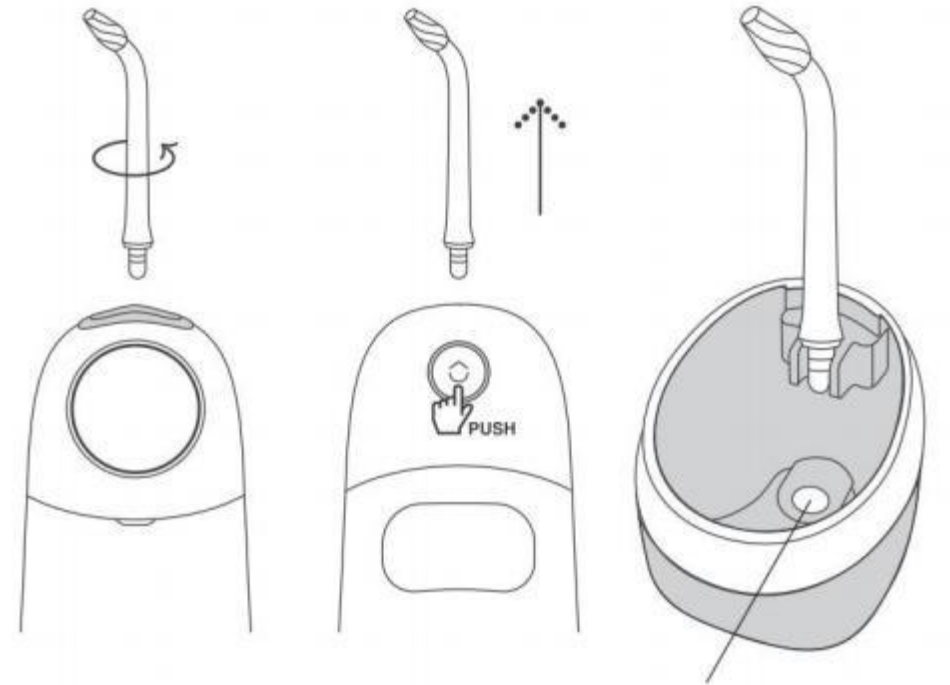
03 Sterilization will be completed after 6 minutes, and the lights on the charging base will turn off. The product screen will display a flashing lightning animation, indicating that the product is charging. After 8 hours of charging, the battery will be fully charged, and the product screen will display a constant lightning icon. After charging, please store the charging base properly for future use.

Reminder:

01 Before sterilization, please empty the reservoir of the water flosser.

02 Before charging, clean the surface of the charging base to ensure there are no other objects, ensuring the effectiveness of product charging. It is also recommended to wipe off any water stains on the body of the product. Please charge in a dry environment, ensuring that the USB charging cable interface is dry and free of objects.

03 Avoid obstructing objects in the UV transmission hole at the bottom of the water flosser. Please pay attention to regular cleaning to avoid affecting the sterilization effect.



UV transmission hole

VI. Cleaning and Maintenance

For the first-time use or after prolonged storage, please follow the steps below for cleaning and maintenance. If not in use for an extended period, it is recommended to drain the water from the product's reservoir and tube to prevent water from spoiling and generating odors.

△ Note: Before cleaning the body and reservoir of the machine, please remove the tip first to avoid scratching or injuring yourself or others.

Clean the Body

01 Please use clean water or a neutral detergent to clean the product. Do not use corrosive or abrasive detergents, and do not use water hotter than 40. C/104°F to clean any part of the machine to avoid damaging the product and reducing its performance.

02 Do not immerse the water flosser in water for an extended period. When cleaning the charging base, please unplug the USB charging cable plug from the power socket first. If necessary, use a soft cloth dipped in a mild, non-corrosive cleaner to wipe the surface of the body.

03 After cleaning, you can place the tip in the tip storage area inside the bottom cover, tightly close the water inlet cover and bottom cover to prevent debris from entering the body of the machine.

Clean the Reservoir

01 Grip the water flosser with one hand, and press the bottom cover button with the other hand. Twist it downwards to open the bottom cover. Rinse the inside of the reservoir with room temperature water, without using any detergent, and ensure that the reservoir's water inlet filter remains clean and free of debris.

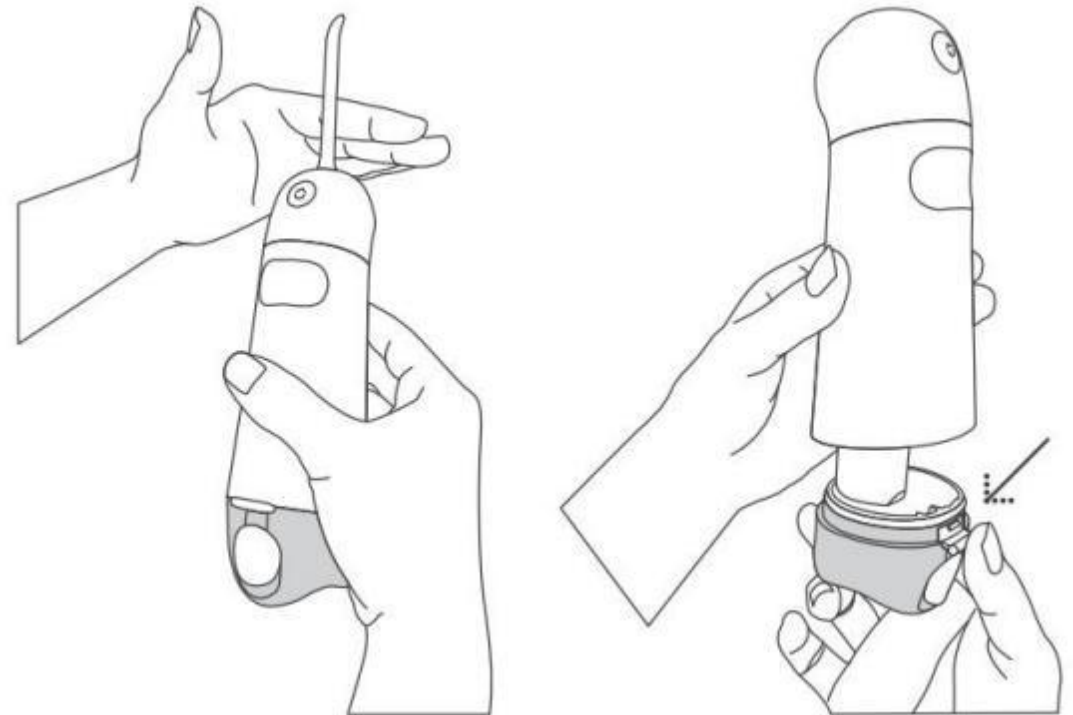
02 After cleaning, please reinstall the bottom cover. Align the front buckle first, then reinstall the bottom cover until the bottom cover button returns to its original position (you will hear a "click" sound). Please note that it is essential to ensure that both the water filling lid and the bottom cover are properly installed before using the water.

Remove Hard Water Deposits

Hard water deposits may accumulate in the product depending on the mineral content in the water. If not removed promptly, it will reduce the performance of the product.

※Removal method:

Fill the reservoir with clean warm water, aim the tip at the sink, press the switch button, and cover the top sensor area with your hand to activate the product and drain the water from the reservoir. Repeat the above steps for cleaning. It is recommended to clean every 1-3 months to maintain product performance.



VII. Troubleshooting

Fault	Cause	Solution
Cannot operate normally No response when pressing the button	Insufficient battery or battery depleted	Charge the product
	Circuit malfunction	Contact customer service
Charging & Sterilization No indication	Incorrect placement on the charging position	Place the product correctly on the charging base
	No power supply	Ensure that the charging cable is connected to the charger
	Circuit malfunction	Contact customer service
Outside the oral cavity, the product can turn on and spray water	Obstacle on the surface of the intelligent sensing area	Remove or clean the obstacles on the surface of the intelligent sensing area to keep it clean
	Sensor or circuit malfunction	Contact customer service
Low water pressure during flossing	Insufficient battery or damaged tip	Replace the tip or charge the product
	The water intake filter in the reservoir is blocked	Clean with a soft brush
	Excessive tilting of the product during use	Adjust the angle of use of the water flosser

VIII. Instructions for Removing Built-in Batteries

The bixdo K30 Smart Cordless Water Dental Flosser adopts a rechargeable lithium battery.

Before discarding this product, please remove the built-in rechargeable battery first. Dispose of the battery in accordance with local regulations and guidelines for recycling.

The dismantling of this product should only be carried out when it is being discarded (if dismantled improperly, it may damage the product's waterproof function and potentially cause malfunctions!)

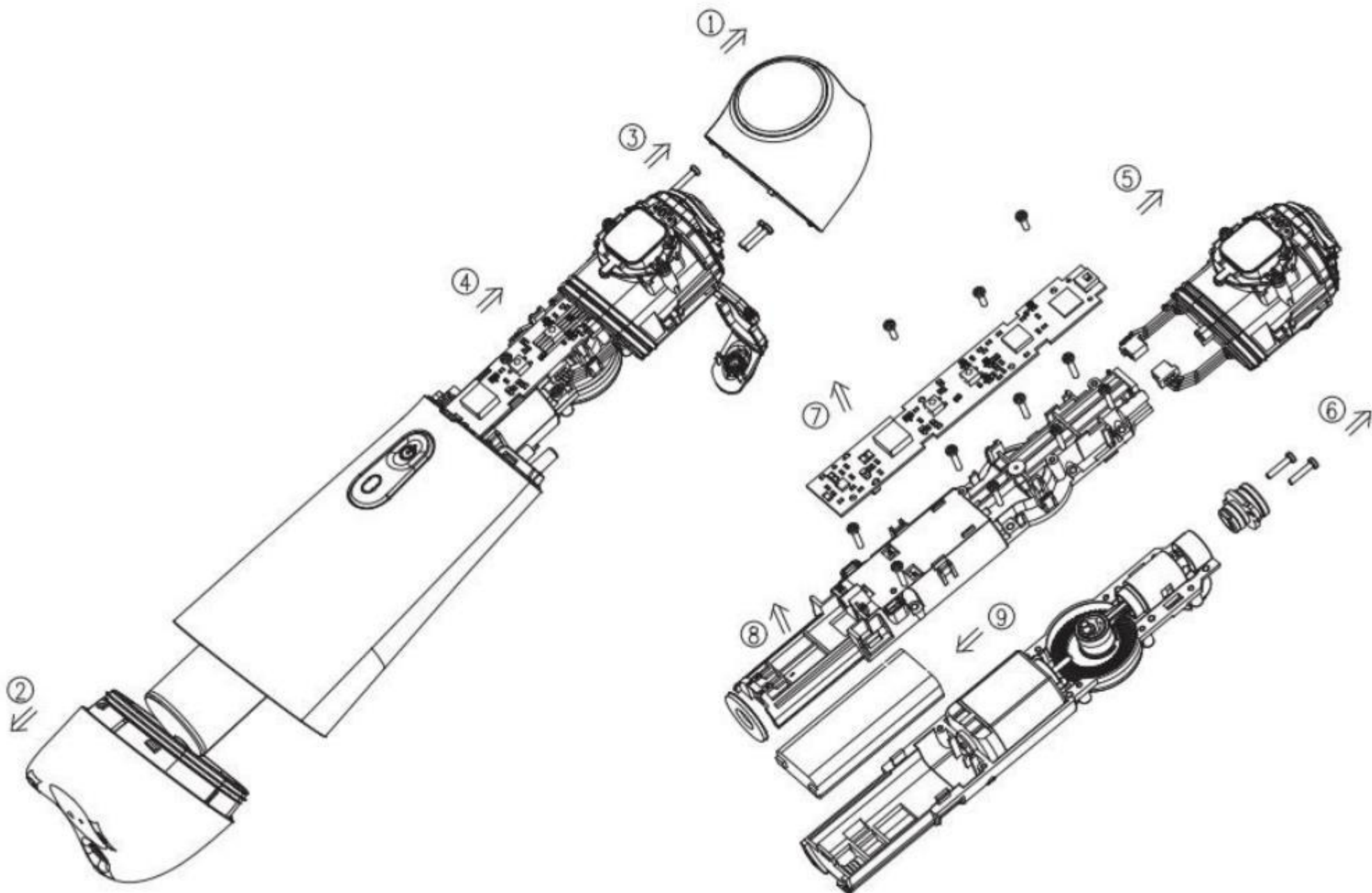
01 Before removing the battery, ensure that the product is powered off.

02 If it's necessary to deplete the battery, press the power button and cover the top protective sensing area of the water flosser with your hand until the product cannot be started.

03 Disassemble the product in the order shown in Figures 1-9 and remove the battery.

04 During the disassembly process, do not short-circuit the battery, do not short-circuit the "+, -" terminals of the removed battery, and put tape on the wiring for insulation protection.

05 After removing the battery, do not reconnect the product to power.



IX. Warranty

bixdo offers a 1-year limited warranty from the date of purchase.

bixdo warrants this new product is free from defects in materials and workmanship for one year from the date of purchase. The consumer will be required to present an original purchase receipt as proof of purchase date and, if requested, the entire product to support a warranty claim. bixdo will repair or replace at its sole discretion provided the product has not been abused, misused, altered, or damaged and was used properly following these instructions. This limited warranty excludes accessories or consumable parts such as tips, etc. Use with unapproved accessories will damage the product and VOID this warranty.

bixdo water dental flosser has no consumer-serviceable electrical parts. For all accessories, services, and questions, please visit www.bixdo.com. Refer to the date code and model numbers in all correspondence. These numbers are located at the bottom of the unit.

FCC Caution:

This device complies with part 15 of the FCC Rules. Operation is subject to the following two conditions: (1) This device may not cause harmful interference, and (2) this device must accept any interference received, including interference that may cause undesired operation.

Any changes or modifications not expressly approved by the party responsible for compliance could void the user's authority to operate the equipment.

NOTE: This equipment has been tested and found to comply with the limits for a Class B digital device, pursuant to Part 15 of the FCC Rules. These limits are designed to provide reasonable protection against harmful interference in a residential installation. This equipment generates, uses and can radiate radio frequency energy and, if not installed and used in accordance with the instructions, may cause harmful interference to radio communications. However, there is no guarantee that interference will not occur in a particular installation.

If this equipment does cause harmful interference to radio or television reception, which can be determined by turning the equipment off and on, the user is encouraged to try to correct the interference by one or more of the following measures:

- Reorient or relocate the receiving antenna.
- Increase the separation between the equipment and receiver.
- Connect the equipment into an outlet on a circuit different from that to which the receiver is connected.
- Consult the dealer or an experienced radio/TV technician for help.

FCC Radiation Exposure Statement

The equipment complies with FCC radiation exposure limits set forth for an uncontrolled environment. During the operation of device a distance of 15 cm surrounding the device and 20 cm above the top surface of the device must be respected.

Please visit our website: www.bixdo.com

Email: support@bixdo.com.cn

Solite Wellbeing USA Inc.

815 Brazos St, Austin, TX 78701, USA