

**the
Voice**

**MANUAL
SHOWTIME**

Package •

Contents



Showtime Speaker



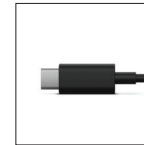
iPad Holder & Extendable
Microphone Stand



Wired Microphone



3.5mm Aux Cable



USB Charging Cable

Safety •

Instructions

- Keep the unit away from heat sources, direct sunlight, humidity, water and any other liquids.
- Do not operate the unit if it has been exposed to water, moisture or any other liquids to prevent against electric shock, explosion and/or injury to yourself and damage to the unit.
- Do not use the unit if it has been dropped or damaged in any way.
- Repairs to electrical equipment should only be performed by a qualified electrician. Improper repairs may place the user at serious risk.
- Do not use the unit with wet hands.
- Do not put objects into any of the openings.
- Keep the unit free from dust, lint etc.
- Do not use this unit for anything other than its intended use.
- Keep the unit out of reach of children.
- This product is not a toy.

Care & Maintenance •

Read the following recommendations before using the Bluetooth Speaker.

- Do not expose the Bluetooth Speaker to liquid, moisture or humidity to avoid the product's internal circuit being affected.
- Do not use abrasive cleaning solvents to clean the device.
- Do not expose the device to extremely high or low temperature as this will shorten the life of electronic devices, destroy the battery or distort certain plastic parts.
- Do not dispose of the device in a fire as it will result in an explosion.
- Do not expose the device to contact with sharp objects as this will cause scratches and damage.
- Do not let the device fall on the floor. The internal circuit might get damaged.
- Do not attempt to disassemble the device as it may get damaged if you are not professional.

FCC •

Instructions

Caution: Changes or modifications not expressly approved by the party responsible for compliance could void the user's authority to operate the product

NOTE: This product has been tested and found to comply with the limits for a Class B digital device, pursuant to Part 15 of the FCC Rules. These limits are designed to provide reasonable protection against harmful interference in a residential installation. This product generates, uses and can radiate radio frequency energy and, if not installed and used in accordance with the instructions, may cause harmful interference to radio communications. However, there is no guarantee that interference will not occur in a particular installation. If the product does cause harmful interference to radio or television reception, which can be determined by turning the equipment off and on, the user is encouraged to try to correct the interference by one or more of the following measures:

- Reorient or relocate the receiving antenna.
- Increase the separation between the product and receiver.
- Connect the product into an outlet on a circuit different from that to which the receiver is connected.
- Consult the dealer or an experienced radio/TV technician for help.

This device complies with part 15 of the FCC Rules. Operation is subject to the following two conditions: (1)

This device may not cause harmful interference, and (2) this device must accept any interference received, including interference that may cause undesired operation.

Controls •

Description



- 1 Mic Volume Knob
- 2 Mic Input
- 3 Aux In
- 4 Mode
- 5 Previous Track
- 6 Play / Pause / TWS
- 7 Next Track / Light
- 8 Micro SD (TF) Card Slot
- 9 USB Slot
- 10 DC 5V In

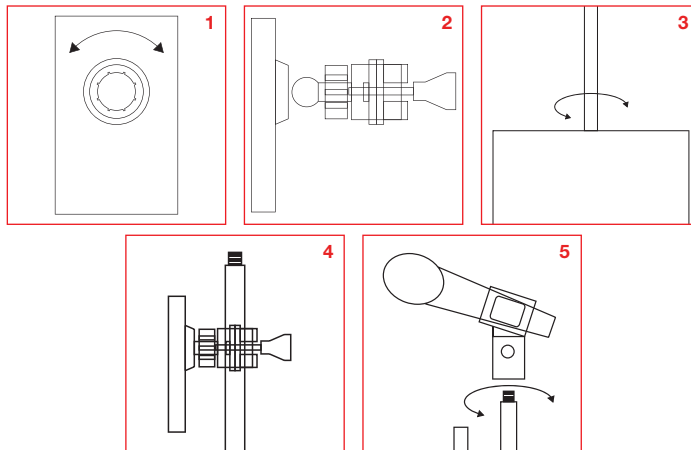
- 11 Charging Indicator
- 12 Power On / Off / Volume Knob

Remark: Long press the Previous Track button for normal microphone or Mic reverberation

Instruction For Use •

Installing the iPad Holder & Extendable Microphone Stand onto the speaker unit

1. Take off the nut from back of the iPad holder.
2. Fasten the ball of the locking bracket to the ball clip on the back of the IPAD holder, and tighten the nut clockwise.
3. Take out the extendable microphone stand, pull to your preferred length. Tighten the end with the plastic thread on the wooden box support in a clockwise direction.
4. Put the locking buckle of the iPad holder through the pull rod and lock it on the second section of the pull rod bracket, and tighten the screw.
5. Fix the microphone bracket to the top of extendable microphone stand, and tighten it clockwise.



5

Instruction For Use •

LED Information



The LED light will turn red while charging and will turn off when the battery is fully charged

ON / OFF Device

Rotate the POWER ON / OFF knob in clockwise direction to turn on / off the device.



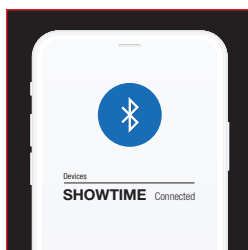
6

Instruction For Use

Pairing



**After Turning On the Device
Wait for Blue Flashing Light**



**Search SHOWTIME
in your Bluetooth Settings**



**Bluetooth Device
Connected**

Note: The Bluetooth Speaker will attempt to automatically connect to the last device it was paired with when switched on. If you want to pair it with a new device, disconnect / forget from your current connected device and please follow the steps outlined above. Once the Bluetooth Speaker is paired with your device the music will transmit through the Bluetooth Speaker. Please refer to your device's user manual for further information.

Instruction For Use

Control Functions

🔊 Increase Volume	Turn Volume Knob to adjust the volume to your desired level
🔊 Decrease Volume	Turn Volume Knob to adjust the volume to your desired level
⏸ Pause	Short press Play / Pause button once to pause music
▶ Play	Short press Play / Pause button once to resume music
⏮ Previous track	Short press the Previous Track button to the previous track
⏭ Next track	Short press the Next Track button to the next track

Listening to Music using USB / Micro SD (TF) Card Slot

Insert USB flash drive into the USB slot or Micro SD (TF) card into the Micro SD (TF) card slot accordingly. An indication tone would be heard, and music would play automatically.

(Note: USB / Micro SD (TF) Card: Supports up to 16GB; Supports music file format: MP3, USB Flash Drive or Micro SD (TF) Card not included.)

Listening to Music using AUX-In

Plug the 3.5 mm Aux-in cable (included) into the AUX-In port of the speaker, voice message "Auxiliary mode" would be heard, plug the other end of the cable to the audio device (such as computer / tablet / MP3 Player etc.)

(Note: While using AUX-In function, except volume function, all functions such as playing next/previous track can be controlled only through your source device).

Instruction For Use •

TWS pairing use (if you own 2 Bluetooth Speakers)

- Make sure both speakers are "ON" and not paired with any Bluetooth device. An indication tone would be heard from each speaker.
- Choose either one as your master speaker.
- Long press the TWS button on master unit.
- Both units will wirelessly connect with each other, and you would hear an indication tone after they pair together successfully.
- Activate the Bluetooth function on your source device (Mobile Phone, Tablet etc). Please refer to manufacturer's instructions for instructions on enabling Bluetooth on your device.
- Search for available Bluetooth devices and you would find "SHOWTIME" – Pair it with this device.
- You might be prompted with "Pair with SHOWTIME?" message on your source device, with "Cancel" and "OK" options. Please click "OK".
- If required, enter the password "0000" to pair with the device.
- Once paired successfully, another indication tone would be heard.
- You can now stream wireless music on your speaker through your source device.

Note: TWS stands for True Wireless. If you want to separate 2 speakers again for individual use, long press the TWS button on one speaker.

Using the Microphone

- Insert the plug of the Microphone (included) into the MIC INPUT of the speaker.
- Turn on the Microphone, and speak for megaphone operation or sing for Karaoke operation.
- Rotate the Mic volume knob to adjust your favorite volume level.

Color Changing light Mode (LEDs are not replaceable)

Long press the Light button each time to change 6 different color changing light patterns (including off light mode).

Troubleshooting •

Symptom	Solution
Low sound level	<ul style="list-style-type: none">• Adjust source volume.• Charge Battery.
No sound	<ul style="list-style-type: none">• Turn the VOLUME knob to increase the volume.• Play the music in the connected device and make sure the volume level is in high level.• Press the MODE button to set the input source to the desired function.
Sound distortion	<ul style="list-style-type: none">• Turn the VOLUME knob to decrease the volume.

Product Specifications:

Bluetooth version: 5.0
Speaker output: 10W
Unit size (speaker only): 8.9" (L) x 8.1" (D) x 11.5" (H)
Unit weight (speaker only): ~5.5 lbs
Bluetooth range: 33 feet
Power input: DC 5V
Charging time: About 3-5 hours
Play time: Up to 2 hours (max volume) Or Up to 2.5 hours (moderate volume)
Built-In Rechargeable Lithium Battery: 3.7V / 1500mAh
USB / Micro SD (TF) Card: Supports up to 16GB, supports music file format: MP3

(Note: Battery life & charging time may vary based on usage, types of devices connected & wireless distance.)

Warranty •

WARRANTY COVERAGE: This product is warranted against defective materials or workmanship. This warranty is void if the product has been damaged by accident, in shipment, unreasonable use, misuse; neglect, improper service, commercial use, repairs by unauthorized personnel or other causes not arising out of defects in materials or workmanship. This warranty doesn't cover the following which may be supplied with this product, including but not limited to; LCD Screens, glass parts, lenses, bulbs etc. This warranty is effective only if the product is purchased and operated in USA and Canada, and does not extend to any units which have been used in violation of written instructions furnished by manufacturer or to units which have been altered or modified or, to damaged products or parts thereof which have had the serial number removed, altered, defaced or rendered illegible.

WARRANTY DISCLAIMERS: This warranty is in lieu of all warranties expressed or implied and no representative or person is authorized to assume for manufacturer any other liability in connection with the sale of our products. There shall be no claims for defects or failure under any theory of tort, contractor commercial law including but not limited to, negligence, gross negligence, strict liability, breach of warranty and breach of contract. Under no circumstances will Manufacturer's/ Distributor's maximum liability exceed the retail value of the product.

WARRANTY PERFORMANCE: During the above 90 day warranty period, a product with a defect will be either repaired or replaced with a reconditioned comparable model (at manufacturer's option). The repaired or replacement product will be in warranty for the balance of the 90 day warranty period and an additional one-month period. No charge will be applicable for such repair or replacement.

SERVICE AND REPAIR: If service is required for this product, you should first contact Midwest Trading Group Customer Service at info@mtradinggroup.com or by calling **1 (866) 815-4714**, Monday to Friday 10am to 6pm EST.

NOTE: Manufacturer cannot assume responsibility for loss or damage during incoming shipment. As a precautionary measure, carefully package the product for shipment, and insure it with the carrier. Be sure to enclose the following details with the product: your full name, return address and daytime phone number, a note describing the problem you experienced, a copy of your sales receipt or other proof of purchase to determine warranty status. C.O.D. shipments cannot be accepted.

