

# Enjoy The Pleasure Of Driving

4K Image | CarPlay | Android Auto | ADAS

(Support U3 standard TF Card only)



# 1. Car DVR Features

## (1) Key Function

### ① Power Key

When the device is powered off, a short press of the power button will turn it on. When the device is powered on, a long press of the power button will turn it off, while a short press will put the screen to sleep. The screen can be awakened by touching it or pressing the power button again.

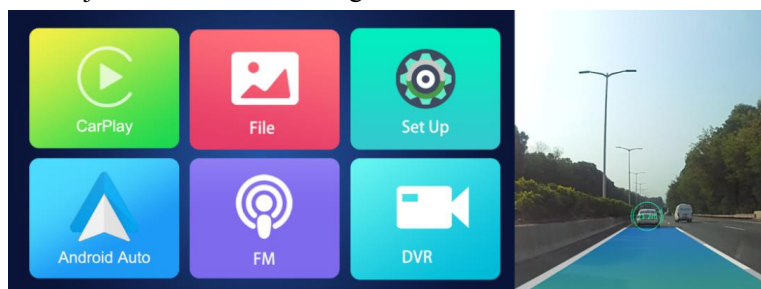
### ② Reset Key (next to the power key)

Forcibly restart the device. If the dash cam crashes or malfunctions, a short press of the reset button will restart the device.

## (2) Interface Function

### ① Start Window

#### 1) Screen Projection/Screen Mirroring

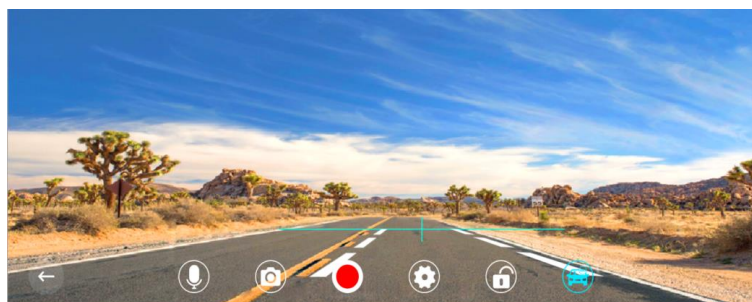










- a. Screen projection mode: When not connected to CarPlay/Android Auto, clicking on CarPlay/Android Auto will prompt you to connect (click again to exit). If already connected, it will switch to the CarPlay/Android Auto interface.




- b. Screen Mirroring mode: When not connected to AirPlay/Miracast, clicking on AirPlay/Miracast will prompt you to connect (click again to exit). If already connected, it will switch to the AirPlay/Miracast interface. (The white box indicates whether the current mode is AirPlay or Miracast, and the startup mode is set to AirPlay.)
- 2) Tapping the recorder area will take you to the preview interface. Click the “photo“ icon to take photos immediately, click the “recording“ icon to turn the recording sound on or off.
- 3) Access the settings interface by tapping "Settings" to adjust device functions.
- 4) Quickly enter the playback interface by tapping "Files".
- 5) Jump to the FM interface by tapping "FM"
- (For split-screen mode: )
- 6) Adjust the device volume by sliding up and down on the left side of the preview area (enabling quick access if the sound is too low).
- 7) Adjust the screen backlight by sliding up and down on the right side of the preview area.

## ② Preview Interface

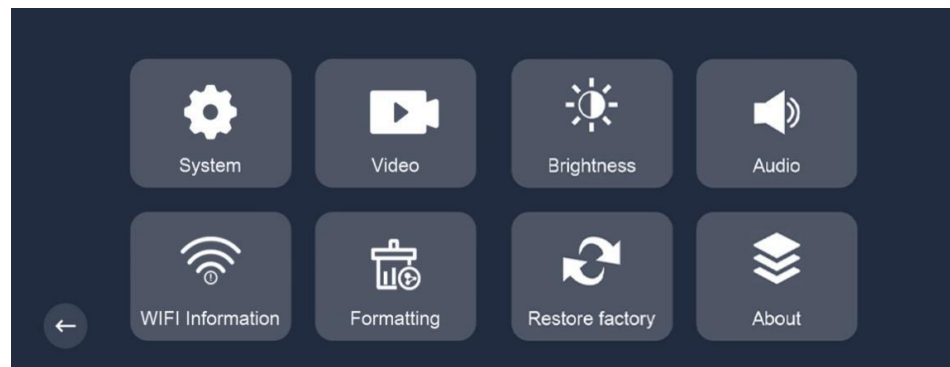


- 1) Sound Recording: The icon  indicates that the recorded file contains audio. The mute icon indicates that the video is in silent recording mode.
- 2) Taking Photo: Click the photo icon  to take a snapshot.
- 3) Recording: Click recording icon , the red dot  indicates that the video is being recorded, and no red dot indicates that the video is not being recorded.
- 4) Set Up: Click the icon , you can enter the relevant function settings of the device.
- 5) Locking:  Gray indicates that the current video is unlocked.  Blue indicates that the current video is locked and the recording icon changes to yellow icon ; Large vibrations will automatically lock the

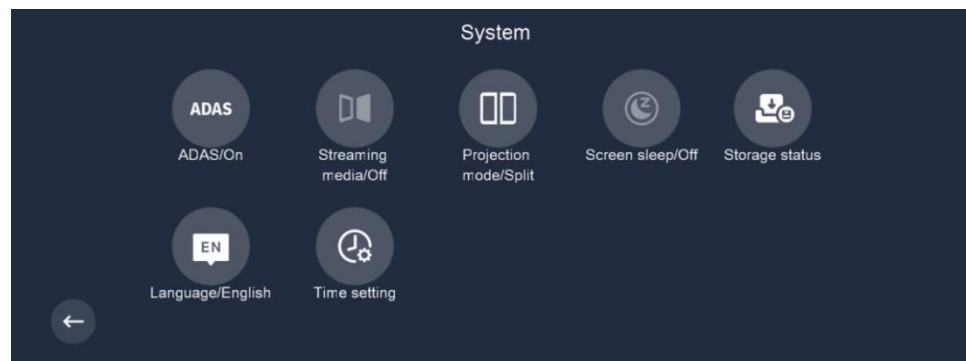
video (collision sensitivity is turned on). Only when the video is being recorded can the lock function be used.

- 6) ADAS:  Advanced Driving Assistance System switch. When the switch is on, the system will make corresponding warning judgments based on the front vehicle, lane lines, and vehicle position and broadcast (lane departure, forward collision, front vehicle start); when the switch is off, there will be no front vehicle start warning announcement.
- 7) Preview Display:
- Left area of the screen: slide up and down to adjust the lens preview angle.
  - Right area of the screen: slide up and down to adjust the screen backlight brightness.
  - Slide left on the screen: enter the playback interface.
  - Slide the screen right: switch the preview mode (front view, rear view, split screenview).

### ③ Set Up Interface



- 1) System:



- a. ADAS: When the switch is on, the system will make the appropriate warning judgement based on the vehicle ahead, the lane departed and the position of the vehicle and broadcast(the car started, the lane departed, attention to the front car); when the switch is off, no

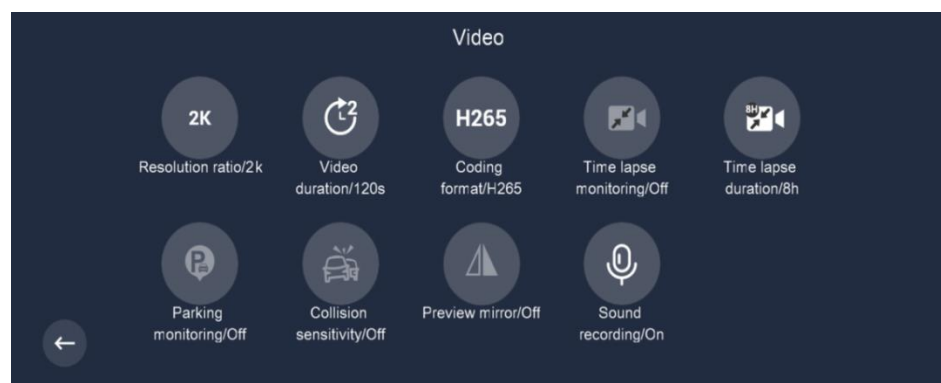
warning announcement is made about the start of the vehicle in front.

- b. Streaming media: Controls whether the preview memory mode or only the post-recording mode is displayed when the device is turned on. When the switch is on, the preview screen when the device is turned on displays the post-recording mode. When the switch is off, the preview screen when the device is turned on displays the mode before the shutdown.
- c. Projection mode/Split: Switchable between split-screen mode and full-screen mode for CarPlay/Auto screen mirroring. Restart of the device is required after the switch.

**Note: Option d and e will only be displayed when GPS is connected.**

- d. Time zone: Option to set different time zones.
- e. Speed unit: Switch display units for speed, KM/H and MP/H.
- f. Screen sleep: After a certain duration of inactivity, the screen will go to sleep according to the set time interval. Options include 10s, 30s, 60s, and off. The default setting is off.
- g. Storage status: View the used and available memory of the storage card.
- h. Language: Switch freely between different languages. Upon switching to a different language, the entire system will display the corresponding language. Default English.
- i. Time settings: Date and time settings can be made and displayed at the top of the preview screen and on the right side in standby mode.

## 2) Video :



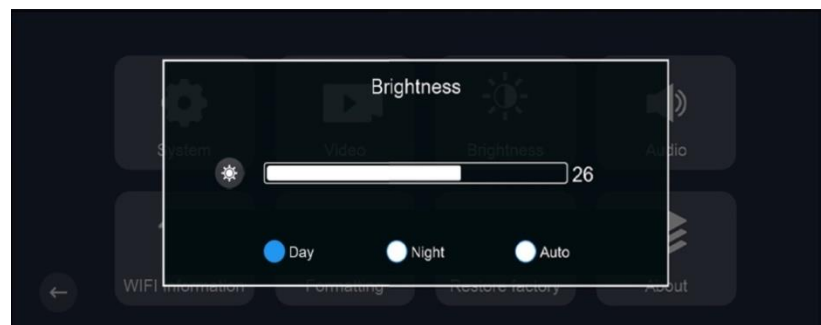
- a. Resolution: The pre-recording video resolution can be changed with options for 4K, 2K, and 1080P, with 2K being the default option.
- b. Video duration: The length of the pre-recording and post-recording video can be set with options for 1 minute, 2 minutes, and 5 minutes, with 1 minute being the default option. The recording files will loop and overwrite, so please transfer or store them in a timely manner.
- c. Encoding format: Switching the recording video format, H264 has the best compatibility, H265 video improves compression ratio and

makes the file smaller.

**Note: Option d, e, and f will only be displayed when the buck line is connected.**

- d. Time-lapse monitoring: There are two options: on and off, with off as the default. When it is off, time-lapse monitoring is not conducted when the engine is off, and the device will shut down. When it is on, time-lapse monitoring will be conducted.
- e. Time-lapse monitoring duration: There are options of 2H, 8H, and 12H, with 2H as the default. The device will shut down when the duration of time-lapse monitoring reaches the set time, and during the period, the setting of one frame per second will be used for recording. The recorded files can be found in the playback emergency recording or in the event folder in the TF card (recorded files end with "\_IMP").
- f. Parking monitoring: There are two options: on and off. When the switch is on, the machine will start recording automatically when the car shakes or vibrates, and it will record a 20-second video before shutting down automatically (**when starting, the machine will prompt with a logo, and the screen will be black during recording. There will be a shutdown sound prompt after recording is completed**). The recorded files end with "\_URG".
- g. Collision sensitivity: The recorder has a built-in sensor, and the sensitivity can be set to low, medium, or high. If there is vibration during recording, the machine will record a new 20-second video and save it to the emergency recording. The recorded files can be found in the playback emergency recording or in the event folder in the TF card (recorded files end with "\_VIO"). When there are too many files, they will be overwritten cyclically, so please transfer or store them in a timely manner.
- h. Preview mirror: Switches the post-recording preview mirror or original image.
- i. Sound recording: Controls whether or not to record sound during video recording, and can be switched on or off, with on as the default.

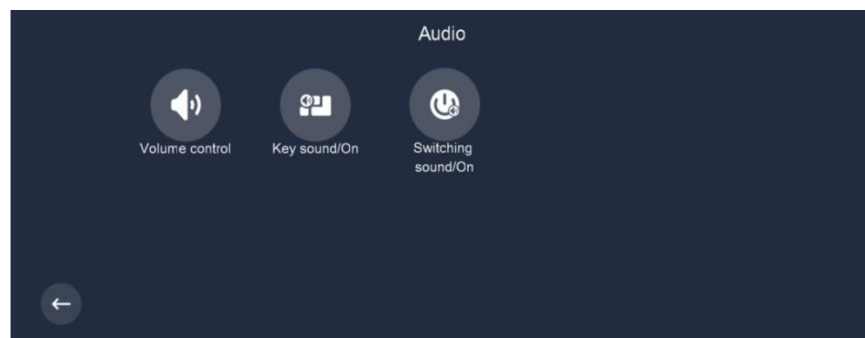
### 3) Brightness control:



Brightness Control is divided into three modes: "day" mode, "night" mode, and "auto" mode.

- The "day" and "night" modes are fixed modes, and the displayed brightness is the same as the manually adjusted brightness. (The brightness slider can be modified.)
- The "auto" mode automatically adjusts the brightness based on the time of day (from 6:00 am to 6:00 pm is the "day" mode brightness value, and the brightness value is changed to the "night" mode value during other times). The brightness value is adjusted according to the brightness values set for "day" and "night" modes. (The brightness slider cannot be modified.)

#### 4) Voice control:



- a. Volume control: Allows adjustment of the system volume. (0-40)
- b. Key sound: Controls whether or not there is a sound when a key is pressed. Can be turned on or off, with the default setting being on.
- c. Switch sound: Controls whether or not there is a sound when the device is powered on or off. The default setting is on.

#### 5) WiFi information:

Offers access to the download QR code for the application used for direct WiFi connection, and displays the SSID and passphrase of the WiFi network.

#### 6) Formatting:

Performs initialization on the TF card, bringing it back to its initial state. If formatting of the TF card fails, please replace the TF card and attempt again.

#### 7) Restore factory settings:

Restores the dashcam to its original settings as it was when it was manufactured.

#### 8) About:

Provides information on the device's software version.

## ④ Playback Interface

Users can access the playback interface by clicking on a file or swiping the screen to the right in the preview interface. The playback interface is divided into level 1 (Figure 4-1) and level 2 (Figure 4-2) interfaces, with the former displayed first.

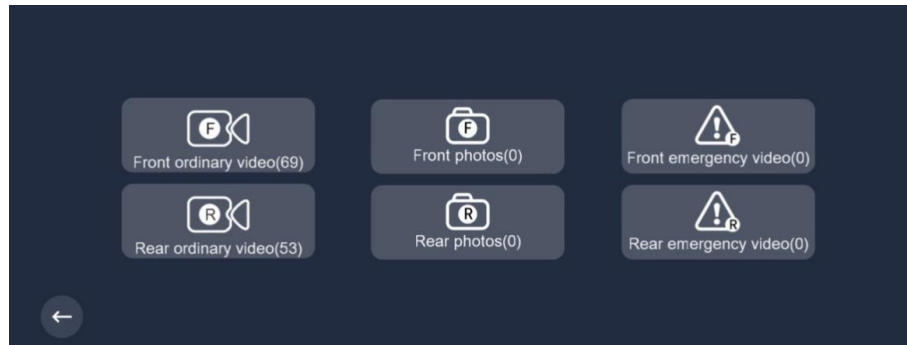


Figure 4-1

- 1) Clicking the corresponding button in the level 1 playback interface will automatically redirect to the corresponding folder.

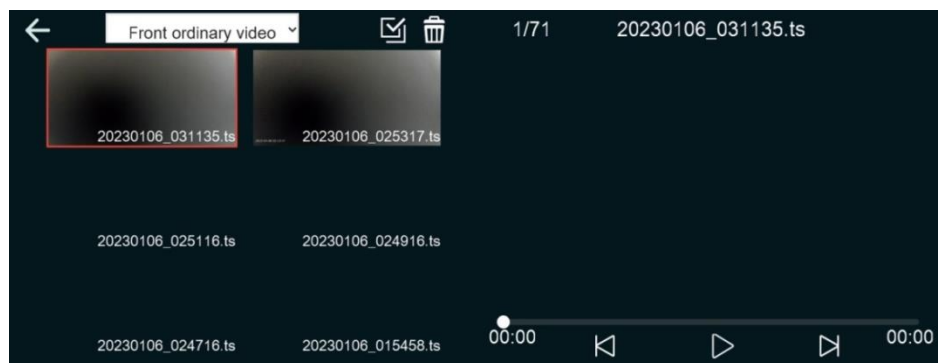


Figure 4-2

- 2) In the level 2 interface, users can directly switch between normal front and rear recording, emergency front and rear recording, and front and rear photo viewing. Users can also view photos, play back recordings, and delete videos.
  - a. Normal front and rear recordings are saved as loop recording files.
  - b. Emergency recordings include parking monitoring videos, emergency locked videos, and time-lapse videos. They can be distinguished based on the last three digits of the video name: \_IMP for time-lapse video, \_VIO for locked video, and \_URG for parking monitoring.

## ⑤ FM Transmitter

An FM modulator modulates a high frequency constant amplitude oscillation signal with an audio signal and amplifies the modulated high frequency oscillation signal before sending it to a transmitting antenna, where it is converted into a radio wave and radiated.



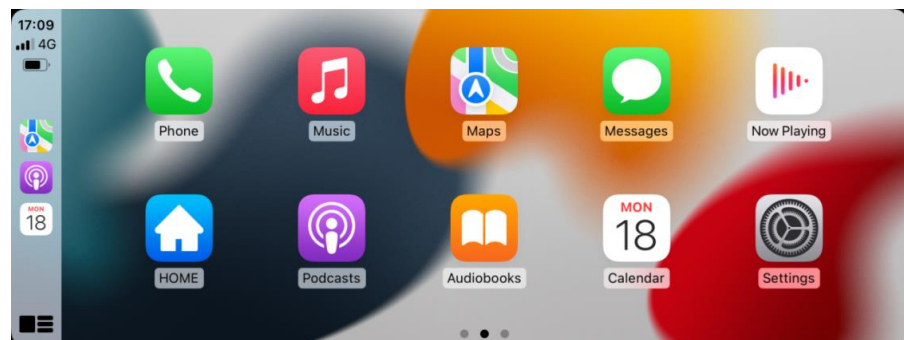


- 1) Button descriptions:
  - a. FM switch: controls whether to use FM.
  - b. Speaker switch: controls whether the device emits sound.
- 2) FM usage instructions:
  - a. Turn on the FM switch.
  - b. After tuning to the appropriate transmission channel, turn on the receiver and tune to the same channel (adjust the channel using the left and right sliding progress bar or the left and right adjustment).

**Note: The device sound will not play when the switch is turned on.**

## ⑥ Carplay/Android auto

Equipped with a built-in screen casting feature, allowing it to connect to Apple and international Android devices and achieve screen mirroring for the synchronization of phone features such as maps, music, phone calls, and messages onto the device.



- 1) Connection Method:
  - a. After powering on the device, turn on the phone's Bluetooth (Settings -> Bluetooth).
  - b. Click the icon "carplay/Android auto" on the device, and check the Bluetooth name.
  - c. Once the phone has connected to the corresponding Bluetooth name, follow the prompts to proceed.
    - a) If a Bluetooth pairing request pops up, check if it is the same as the Bluetooth name displayed on the device, and select "Pair".
    - b) If a sync request for contacts and personal collections pops up, click "Allow" to proceed.

- c) If a prompt appears to use carplay while driving, select "Use Carplay".
- d. With automatic Wi-Fi connection, the device will be connected, and a successful connection will be indicated by the display of the carplay/Android Auto interface on the device.

**Note: If unable to connect to CarPlay**

Pls forget the connected Bluetooth and try to reconnect.

**Method 1:** If the connection is still unsuccessful, try restarting the phone and the device, wait for 15 seconds, and then restart and try again.

**Method 2:** If only the pop-up windows "Bluetooth Pairing Request" and "Allow Contacts and Favorites Sync" appear when connecting, but the pop-up window "Use CarPlay with 'CarPlay'" does not appear, please check whether the phone's "Settings > General > CarPlay" has a connected CarPlay, if yes, delete it and try again.

**Method 3:** If still unable to connect, please contact us with email address [Imagebons@outlook.com](mailto:Imagebons@outlook.com)

**If unable to connect to Android Auto**

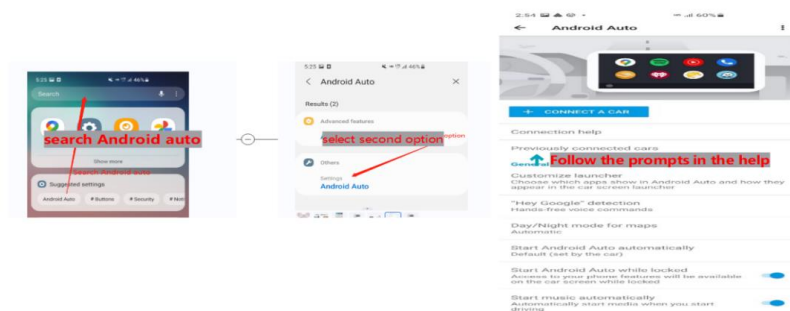
(Update the Android Auto program on your phone and turn on wireless connection in the Auto settings)

**Method 1:** Disconnect the Bluetooth connection of other devices on the phone, ignore the Bluetooth of the device, and try to connect again.

**Method 2:** Restart the device and try to reconnect the Bluetooth of the phone.

**Method 3:** Restart the phone and turn off the device for 15 seconds, then try to connect the Bluetooth again.


Pls search for "Android Auto" on the phone (If the above methods still cannot connect), select "Settings > Android Auto > Connection Help", and follow the prompts in the connection help to operate. Then restart the device (turn it off for 10 seconds).



2) Disconnection Method:







- a. Select the Home button in Carplay or the Exit button in Android Auto to return to the initial interface, then click on the disconnect button located above Carplay or Android Auto to disconnect.
- b. Mobile terminal: Go to the settings and turn off the WiFi.

3) User instructions:

Assistive touch : Long press and drag to adjust its position.

Click on the assistive touch to adjust the brightness, volume, and switch between screens (in-

itial screen, preview screen, playback screen, and settings screen).

- a. Click brightness icon  to adjust the screen backlight by dragging the progress bar.
- b. Click the volume icon  to adjust the device's sound level by dragging the progress bar.
- c. Click the home icon  to return to the initial screen.
- d. Click the record icon  to switch to the preview screen and perform preview operations.
- e. Click the play icon  to switch to the playback screen and view the video.
- f. Click the setting icon  to switch to the settings screen and configure the on/off settings.

## ⑦ Wired Android auto (rechargeable)

## ⑧ Screen Mirroring

Mirror casting is a function that allows you to project the screen of your Android/iOS device onto another device. Before using this function, you need to manually switch the "Screen mirroring" toggle in the "Phone Link" settings to "On": (Settings > System Settings > Phone Link). Note: before using AirPlay/Miracast screen mirroring, you need to manually select AirPlay/Miracast in the main interface. By default, AirPlay is selected upon startup (the white highlighted box indicates which mode is currently open).

### 1) Apple Carplay

AirPlay is a wireless screen mirroring feature on Apple's iOS devices, which allows you to mirror the content on your iPhone or iPad to other devices.

- a. Connection method
  - a) Turn on the AirPlay switch on the target device.
  - b) Connect your phone to the same Wi-Fi network as the target device.
  - c) Open the Control Center on your phone, find the Screen Mirroring switch, and select SmartScreen to connect.

### 2) Miracast

Miracast is a wireless display standard based on Wi-Fi Direct. With Miracast, you can play videos or photos directly on your TV or other devices without any cables or wireless hotspots.

- a. Connection method
  - a) Turn on the Miracast switch on the target device.



- b) Find the screen mirroring app on your Android phone (the name of the app may vary on different phones).
- c) Open the app and connect to SmartScreen.

## 2. ADAS Instruction

- (1) Calibration of Calibration Lines (**Adas function must be enabled and GPS must be inserted**)

Calibration of calibration lines can be done manually or automatically.

- ① Manual calibration: After installation, adjust the lens so that the lane lines on the screen are aligned with the lane lines on the road. If you need to adjust the

position of the screen lane lines, press and hold the Adas icon  for 2 seconds in the preview interface, and a cross-style intersecting line will appear on the screen. Drag the horizontal line to align with the far end of the road, and drag the vertical line to center-align with the current road. After aligning the crosshair, press the Adas icon  again to save the settings.

- ② Automatic calibration: After installation, if the screen lane lines do not align with the road lane lines and are difficult to recognize, drive on a straight and clear road with visible lane lines for a period of time, and the calibration points will be automatically recognized and set up.

- (2) Notes

When the GPS module is inserted, the warning broadcast will only be triggered when the speed reaches 50KM/h. Without the GPS module, the speed does not affect the warning broadcast, and all warnings will be broadcasted by default.


## 3. Playback track

**Note: The path Tracking requires the use of a Prescribed GPS module and the device must be located before being viewed.**

- (1) Once GPS positioning is done, trajectory data will be generated and stored in the video. The trajectory can be viewed using GXPlayer.

- ① Steps to install GXPlayer:

- 1) Required items: a card reader, a memory card, and a GPS module.
- 2) Insert the memory card into the device. If the device fails to recognize the card, please format it or unplug and replug it.
- 3) Insert the GPS module into the device. The preview interface will display

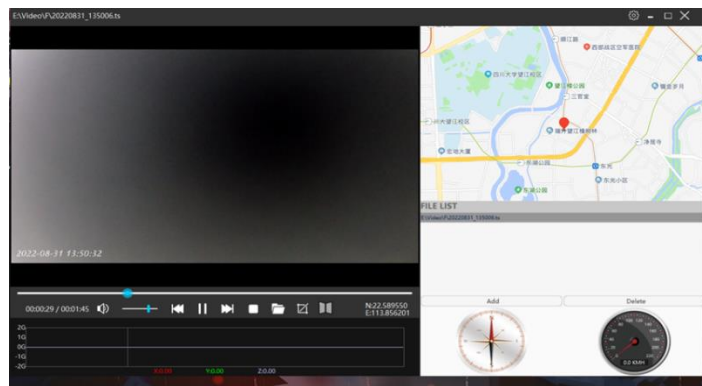
a positioning icon, as shown in the figure. 

- 4) Put the memory card into the card reader and find the gxplayer.exe file in the memory card on the computer, as shown in the figure.




- 5) Click to install. After installation, use the player to play the video to view the location data stored in the video.

- ② To view the trajectory: play with a media player.



- (2) Viewing with the Roadcam App

- ① Please refer to the instructions for WiFi direct connection to install the App

- ② Click  into the APP interface after opening Roadcam and connecting to WiFi

- ③ The specific steps are as follows: (the following instructions are for iPhone, Android phones have similar steps.)



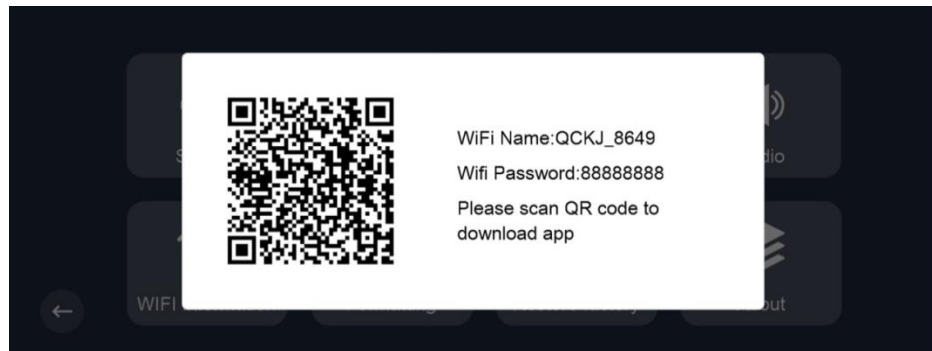
## 4. WiFi Direct Connection

(For more information, please refer to the app operation instructions.)

The system can perform basic functions through a WiFi connection to the system's mobile device using the "Roadcom" APP


(1) APP Installation:

Go to the "General Setting" in the device and find the WiFi information. The App can be download and install by scanning the QR code or by directly scanning the following QR code.




(2) Wifi Direct Connection:

① If the phone is not carplay or Android Auto cast screen

- 1) Check the WiFi information in the device's settings (name and password).
- 2) Find and connect the same WiFi name in the phone's WiFi settings.
- 3) Open Roadcam App and click the icon  to view the live stream.



② If the phone is carplay casting screen

- 1) Simply open Roadcam App and click the icon  to view the live stream.

## 5. Installation Guide

1. Turn off the car engine.

2. Insert the SD card into the slot of the dash cam.  
[Note]: Please use a high capacity SD memory card (U3 class 10).
3. Fix the DVR on the original rearview mirror of the car.
4. Insert the car charger into the cigarette lighter socket of the car.
5. Connect the USB-C port of the dash cam with the car charger using the charging extension cable.  
[Note]: When wiring, the charging extension cable can be laid along the edge of the car windshield.
6. Install the rear camera at the back of the car, pay attention to the direction during installation. The wiring can be laid along the ceiling of the vehicle. After installation, plug the rear plug into the rear camera interface of the dash cam.
7. Adjust the position of the lens to ensure that the lens is level with the ground.
8. Start the engine and check if the machine is installed correctly.  
[Note]: When the machine is installed correctly, the system working indicator light will be on; the machine will start and enter the recording state, and the recording indicator light will flash. Please check if the display screen shows a normal image. If the displayed image is inverted, please contact us in time.

## 6. Matters needing attention

1. Please use the product at natural temperature and avoid working in temperature ranges that are not suitable for human adaptation.
2. Please use the product in environments with appropriate humidity for human habitation. Do not expose the product to damp environments, as it is not waterproof.
3. Do not attempt to open or repair the product or any of its components. If the product or any of its accessories have malfunctions, please take them to a professional repair center.
4. Do not use harsh chemicals, solvents, or cleaning agents to clean the product. Please use a slightly damp soft cloth to wipe the product.
5. Avoid using the product in environments with high dust density to prevent the lens and other components from being contaminated by dust and affecting the recording quality.
6. Please pay attention to environmental protection and do not dispose of the product indiscriminately. Do not throw the product into fire to avoid explosions.
7. If the dashcam has any malfunctions, press the reset button at the back of the device to reboot it.
8. Do not plug or unplug the rear camera during use.

## 7. Frequently Asked Question

1. Q: What is the issue when there is no sound from the machine?  
A: (1) Check if the FM is turned on, if so, turn it off first.  
(2) Check if the system volume is turned off in the settings.  
(3) Check if the speaker is damaged.

2. Q: What is the transmission range of WiFi and FM?  
A: (1) WiFi distance is about 8 meters, and FM is about 4-5 meters.
3. Q: When viewing through a card reader on a computer, why is the displayed video duration different from the actual video length?  
A: (1) Try changing to the Windows 10 operating system.
4. Q: How long can the time be saved with a button battery?  
A: (1) At room temperature, if the button battery voltage drops to around 2.89V, it can be saved for about 15 days.
5. Q: Why is there no sound from the machine after connecting to Carplay/Android Auto?  
A: (1) Check if the phone's Bluetooth is connected. If it is, disconnect and try again.  
(2) Check if the system volume is turned off.
6. Q: What should be done if the gxplayer.exe file is not found?  
A: (1) Unplug and plug in the GPS module again.  
(2) Formatting the memory card will erase the files.
7. Q: What should be done if the video trajectory is not seen in gxplayer?  
A: (1) Check if the GPS module is plugged in when recording.

- (3) Change the map in the player and check again. (Setting  
--Maps)





## **FCC WARNING :**

This device complies with part 15 of the FCC Rules. Operation is subject to the following two conditions: (1) this device may not cause harmful interference, and (2) this device must accept any interference received, including interference that may cause undesired operation.

Any changes or modifications not expressly approved by the party responsible for compliance could void the user's authority to operate the equipment.

NOTE: This equipment has been tested and found to comply with the limits for a Class B digital device, pursuant to Part 15 of the FCC Rules. These limits are designed to provide reasonable protection against harmful interference in a residential installation. This equipment generates, uses and can radiate radio frequency energy and, if not installed and used in accordance with the instructions, may cause harmful interference to radio communications. However, there is no guarantee that interference will not occur in a particular installation. If this equipment does cause harmful interference to radio or television reception, which can be determined by turning the equipment off and on, the user is encouraged to try to correct the interference by one or more of the following measures:

- Reorient or relocate the receiving antenna.
- Increase the separation between the equipment and receiver.
- Connect the equipment into an outlet on a circuit different from that to which the receiver is connected.
- Consult the dealer or an experienced radio/TV technician for help.

To maintain compliance with FCC's RF Exposure guidelines, This equipment should be installed and operated with minimum 20cm distance between the radiator and your body: Use only the supplied antenna.

## **IC Caution:**

English:

This device complies with Industry Canada licence-exempt RSS standard(s).

Operation is subject to the following two conditions:

- (1) This device may not cause interference, and
- (2) This device must accept any interference, including interference that may cause undesired operation of the device.

To maintain compliance with RSS-102 RF Exposure guidelines, This equipment should be installed and operated with minimum 20cm distance between the radiator and your body: Use only the supplied antenna.

French:

Le présent appareil est conforme aux CNR d'Industrie Canada applicables aux appareils radio exempts de licence. L'exploitation est autorisée aux deux conditions suivantes:

- (1) l'appareil ne doit pas produire de brouillage, et
- (2) l'utilisateur de l'appareil doit accepter tout brouillage radioélectrique subi, même si le brouillage est susceptible d'en compromettre le fonctionnement.

Pour être conforme aux lignes directrices d'exposition RF RSS-102, cet équipement doit être installé et exploité à une distance minimale de 20cm entre le radiateur et votre corps: n'utilisez que l'antenne fournie.

HVIN:1026-R8-XLDPro

Product Marketing Name: Portable Car Stereo